

Division 10  
Mid-Central Region  
National Model Railroad Association  
9/27/16

A group consisting of the officers and board elect and past officers of Division 10 met to discuss the transition from the old to the new board on Tuesday 9/27/16. It was held at the home of John Gorman. The meeting was called to order at about 7:05 p.m. by Superintendent elect Bob Belt.

In attendance: Tom Krill, Alan Bourne, John Gorman, Bob Belt, Bruce DeMaeyer, Bill Paulsell, Fred Plymale, Bill Robbins, Stew Winstandley and Tom Bensberg.

Bob handed out an agenda as follows:

- 1) A review/refresher of the duties/responsibilities of the Executive Committee and Board of Directors.
- 2) An updated Org Chart - Committees & Chairmen.
- 3) A regularly scheduled monthly meeting of either Ex-Com/BoD/optional on the 4th Tuesday.
- 4) Duties and expectations of Committees.
- 5) Suggested updates and corrections to the Constitution & Bylaws.

Bob asked Tom Bensberg to review his "Division 10 Board Duties ..." document dated 9/1916 and previously furnished to the group via email. Appropriate excerpt is shown below. Note this represents Tom's interpretation of Constitution and Bylaws.

"Division 10 purpose:

- A. The promotion of greater fellowship among members of the National Model Railroad Association in the DIVISION 10 area,
- B. To promote the hobby of model railroading,
- C. To provide a common meeting ground for social activities.

Elected officers are Superintendent, Assistant Superintendent, Secretary, and Treasurer.

Elected officers make up the Executive Committee

Appointed officers are Lantern Editor and at least 4 trustees.

Executive Committee appoints trustees and Lantern Editor.

The board of directors is composed of elected officers and appointed officers.

The board of directors is responsible for the management of the Division, and has legal title to all Division property and money to hold in trust for the Division membership.

The Board of Directors establishes committees necessary for the operation of the Division.

The Superintendent appoints committee heads. (except Lantern Editor)

The Executive Committee shall act for and report to the Board of Directors on activities between meetings."

There was some general discussion about the above summary but no objections to the interpretation. There was also some discussion of the division name and term limits that was tabled for future consideration.

Per the agenda, further discussion of the Constitution and Bylaws took place. Potential modifications include specifically allowing electronic communication for the Lantern and elections, matching nomination announcements to actual meeting schedule, etc. It was determined that more research is needed to determine the effect of such changes on our IRS non-profit status.

Bruce DeMaeyer handed out a proposed organization chart for discussion purposes only. (See copy at the end of these minutes.) It includes a few changes in committees. Actual committees, chairs and duties will be determined after the new board takes office.

Discussion of future board meetings concluded with decision to meet next at 7:00 p.m. on Tuesday, October 11, 2016, at the home of Bill Robbins. Future meeting schedule will be determined at that meeting. It was agreed that this early date will allow for any board decision or information to be included in the Lantern prior to the next regular division meeting.

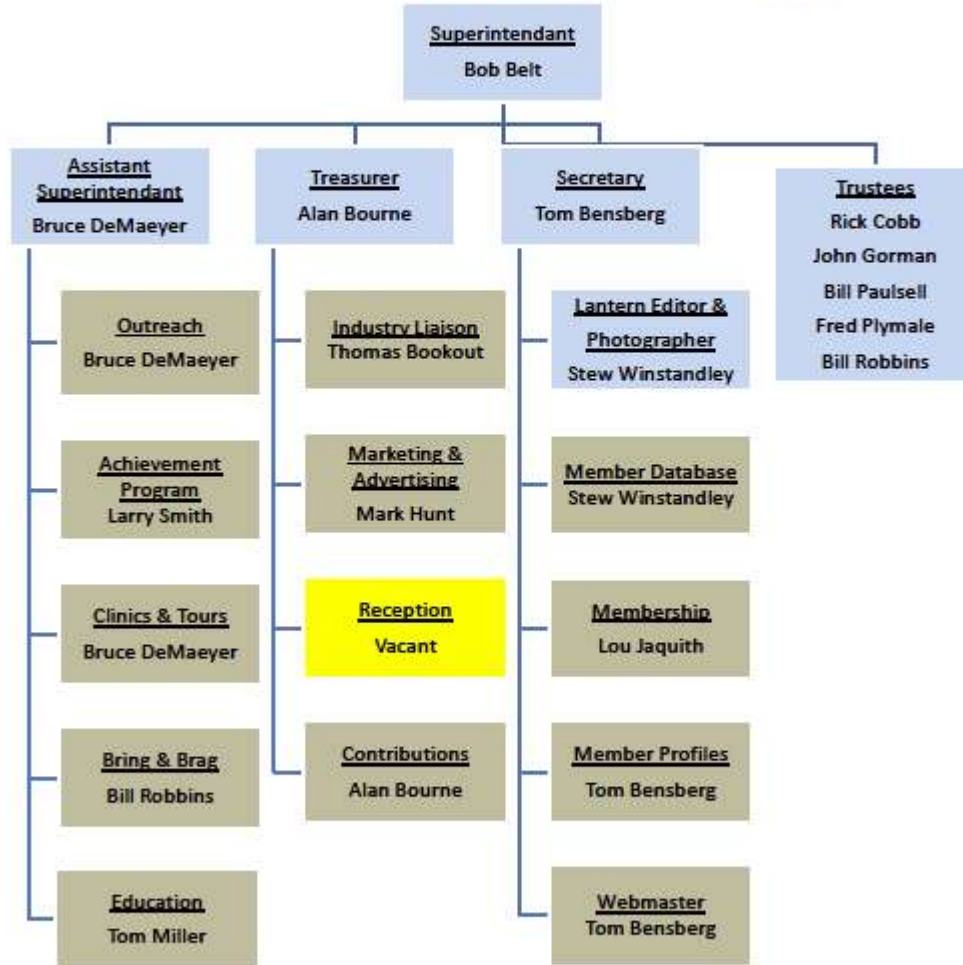
Fred Plymale suggested we pay for subscriptions to Railroad Model Craftsman for the Lexington Public Library branches. All agreed that this was an excellent idea. More research needs to be done to determine how to get authorization to add a periodical to the library and to place Division 10 contact information in each issue.

Bruce DeMaeyer handed out a map showing the distribution of membership in the counties of our division. (See copy below.) It was noted that about 55% of our membership live in Fayette County. Another 20% live in the counties adjacent to Fayette. The rest are scattered throughout the division.

The meeting was adjourned at approximately 8:30 p.m.



**Organizational Chart**  
Division 10  
Mid-Central Region  
National Model Railroad Association  
<http://nmramcrdiv10.yolasite.com/>  
**Proposed Organization**



Light blue = board members

Division 10 Membership Distribution by County September 2016



Adair, Anderson, Bath, & Bourbon 1 each  
Boyle 3  
Breathitt 1  
Clark 5  
Clay 1  
Franklin 4  
Jessamine 3 (two attend most meetings, Gerstle does not)  
Madison 3  
Montgomery 1  
Pulaski 3  
Whitley & Woodford 1  
Fayette 36

Tom Bensberg  
Secretary