



THE LANTERN



NOVEMBER 2018 VOLUME 20 ISSUE 11

Superintendent's Report

As promised in October meeting here comes the MCR BOD meeting notes! I won't dwell on the usual business stuff, just the 'extras'. The NMRA discount program is growing – check out the members only part of the NMRA.org website for company listings and codes. A couple of committee reports of interest – **Steve Zapytowski MMR**, chairman for the 2019 MCR Convention, reported on the preparations at Boardman, Ohio, for May 2-5. He also announced that modules (in particular T-Trak) would be added to the Region contest. Our own **Bruce DeMaeyer**, the MCR Module Coordinator, described the proposed entry form and judging sheet for the Module Contest. This contest will be a 'Beta' test for the Region in preparation for the 2020 Regional in Pittsburg, PA. **Fred Soward**, Div 8, reported on the 2018 Narrow Gauge Convention format - specifically that there were tours only in the afternoon and clinics were held only in the morning and evening at the convention hotel. The nighttime tours have been an issue with many MCR members, about driving at night on unfamiliar roads. Sounded like a good idea to me.

Another item of note – the 2021 MCR Convention will be a joint venture with Divisions 11 & 12 co-hosting. For you who don't recognize the '12' – that is the new MCR Division formed from counties in Western New York and Pennsylvania that moved from the Niagara Frontier Region. This move has been in work for nearly 10 years and was finally wrapped up this year with NFR and National blessing. If you go to the NMRA.org/MCR Home page - in the 'Divisions' sidebar – you get a page with a 'Map....' bar that takes you to a great map of the MCR – showing the new Division 12 and all others including ours. **Don Wilke**, MCR webmaster, introduced me to this at the Division 6 meeting in Chillicothe, Ohio, where I had accompanied Bruce for his T-Trak clinic.

The MCR Board of Directors meets at Schmidt's Sausage House in Columbus, Ohio, for the annual October meeting. I am a Board member by virtue of being Superintendent. Not really a plug for the restaurant but they have GREAT creampuffs for desert.

Now back to the regular stuff. Note the November clinic has another guest, **Bob Frankrone**, on 'Open Loads' at the Beaumont Library Branch. There isn't a tour set right now but that may change by meeting time. Yeah, I'm waffling but still don't have December clinic firmed up – but another note – it will be at **Eastside Library** on the 2nd Sunday. All Lexington libraries are closed the 1st Sunday. January will be back at Beaumont. I've been helping get our new Assistant Superintendent **Jeff Hedge** up to speed so I'm still working clinics and tours. We're getting there – albeit slowly – my foot dragging – not his!

Speaking of Jeff, I've tasked him to work the B&B schedule and he has some great ideas. Frankly, I've been at a loss on this one. Would sure like some other input on what you guys would like to see. Our officers were installed at the end of the October meeting. Read about our two new officers on page 3.

I got a couple really great suggestions during my last operating session and the bull session afterward. Seems like some of the operators have a lot more experience than I. That's something we can all benefit from – listening and learning. Of course, the next step is application. Well, that's what this model railroading hobby is really all about – and that is FUN!

Wish to thank our new member, **Bill Parker**, for hosting the tour in October. Good job, Bill. Looked to me like there was a pretty good turnout. Maybe we ought to have more tours. Some action required. Our officers were installed at the end of the October meeting.

— Bob Belt



For the NMRA MC Region officers link to www.midcentral-region-nmra.org/bod2.html

The Lantern is a monthly (except July) publication of Division 10, Mid Central Region (MCR), National Model Railroad Association. All opinions expressed herein are those of the authors, and do not necessarily reflect those of Division 10, the MCR, the NMRA, or anyone else.

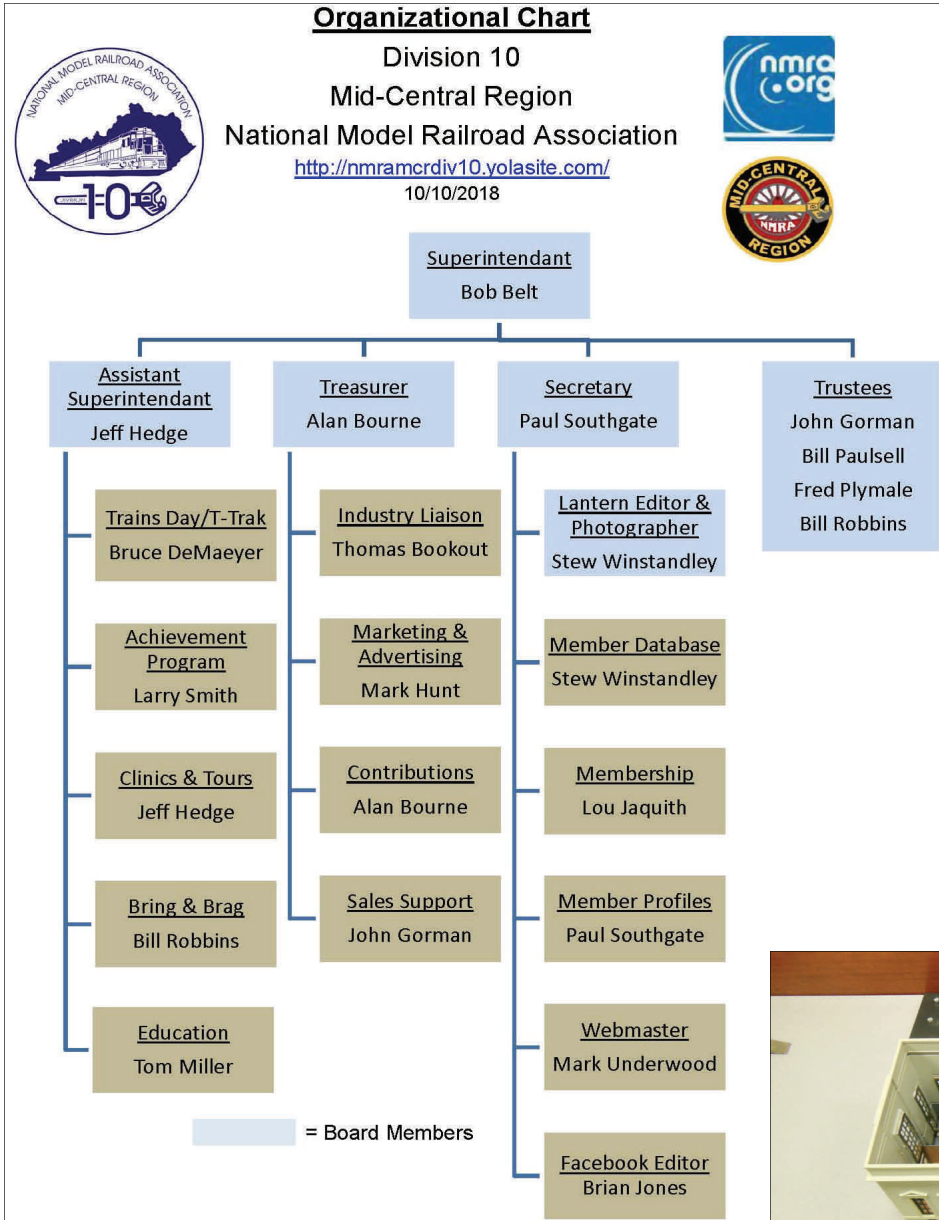
In Recognition...

Many thanks to folks listed in the column below. They have given their support for our club. We encourage all NMRA members to help with financial support to *The Lantern* and our website and the Division 10 activities. **Send your monetary contribution to our Treasurer.**

To be listed here your contribution needs to be at least \$20 in cash, or material valued at \$50, or a total of 20 hours time within the last year. Division 10 receives NO monetary support from the NMRA or the MidCentral Region. Div.10 is recognized by the US government as a 501c3 corporation and your cash or material donations may be tax deductible.

Report materials or time to Stew Winstandley. To the right of each contributing member's name is the month of his or her latest contribution. Whenever one makes a contribution of money, material, or time, his or her date will be updated, and for new contributors, their name will be added. Anyone not making a contribution within 12 months will be dropped .

Harold Weinberg	9/2018
Paul Evans	6/2018
Chester Myers	5/2018
John Stokes	1/2018
Michael Bruce	"
Tom Krill	10/17
Bob Ferguson	"
John Bowling	"
Lou Jaquith	"
Mark Hunt— paper and copying of printed materials	
Fred Plymale—Slide Projector	
John Gorman	
Alan Bourne—Treasurer's materials	



Division 10 website addresses are: 1) above at top of Org. Chart, 2) <https://www.facebook.com/NMRA.MCR.Div10/> and 3) <http://ttrak.wikidot.com/nmra-mcr-division-10-the-kentucky-division>

Division 10 Treasurer's Report: Sept. 1, 2018—
\$11,286.16; Expenses: August meeting, \$35.86; Deposits:
Contribution \$20.00; Balance: Sept. 30, 2018—
\$11,270.30. Give or send your contribution to Alan Bourne,
438 Queensway Dr.. Lexington, KY 40502



Above: Bill Parker's winning October Bring and Brag structure. The top floor is removed to show the lower level, both scratch built by Bill.



New Officers for 2018—2020

Paul Southgate, Secretary, blue shirt foreground

My father first introduced me to model railroading as a child. After graduation from Tates Creek High School and Eastern Kentucky University, life forced the storage of the trains for over 30 years. Three years ago, the trains finally found a home and my first layout was constructed using Digitrax DCC. My HO layout is currently being redesigned and will follow a mid-50's coal town theme including mostly steam locomotives.

I am excited to be able to serve the members of Division 10 as your Secretary, and hope that our group can expand to reach additional train enthusiasts.

Jeff Hedge, Asst. Superintendent, left rear

My first memories of a model railroad layout are of an HO layout that my mother's uncle had. When he decided to let us have it, it became the center piece for modification and expansion by my brother and me. Since marriage I have created a layout in each home we have owned.

When living near Dayton, Ohio, I started my NMRA membership in the MCR Division 3. In 1981 I became a life member of the NMRA. I left Dayton for Illinois where the NCR Division 3 was located, and I was introduced to serious operations. In moving to Maryland in 2004, I volunteered working on the 1:1 Wilmington & Western Railroad. Later a local division was created in the MER. I was the Assistant Superintendent for a couple of years.

I am now retired and have moved to Georgetown. I am continuing my 1:1 activity, and will be constructing a model of the Mahoning Division of the Erie Lackawanna.

T-Trak Update

<http://ttrak.wikidot.com/nmra-mcr-division-10-the-kentucky-division>

The next T-Trak layout is scheduled for Division 8's show on November 17th.

I have been named the Mid-Central Region's T-Trak Coordinator and I've begun to create a committee of division coordinators.

Steve Zapytowski made a motion, at the MCR BOD meeting, that was approved, to add T-Trak Modules to the categories of Judging in the Contests at MCR conventions. That means there will now be four categories in the Regional Convention Contest (Models, Photos, Arts and Craft and Modules).

Larry Smith has accepted the role of Contest Coordinator for Modules. Larry recently went to the National Convention in Kansas City to look over the Module judging process and actually became a judge.

By the end of October I will have been to Divisions 8, 9, 5, 6 and 1. Division 7 will be visited on November 11 and Division 3 on November 18. If anybody would like to join me at these meetings, let me know. I could use some help taking our modules up to Cincinnati on November 11. I'd like to set up our expanded oval at their meeting.

—Bruce DeMaeyer



Bruce, center background, and Bob Belt, right side, at the Division 6 meeting, October 14th, with a couple of T-Trak modules..

THE LANTERN
NEWSLETTER FOR NMRA MCR DIVISION 10

210 BRANNON RD.
NICHOLASVILLE, KY 40356-9711
WWW.DIV10-MCR-NMRA.ORG



Nov. 4, 1:30

BEAUMONT LIBRARY

BRING AND BRAG

OPEN LOADS

MEETING AGENDA

MODELING LOADS, BOB
FRANKRONE

TOUR

NONE

AROUND THE BEND

MON.	DAY	HOST	PLACE	EVENT / PROGRAM	TOURS	BRING & BRAG
Nov.	4	Div. 10	Beaumont Library	Bob Frankrone, Loads	None	Open Loads
Nov.	17	Div. 8	4615 Fegenbush Lane, Louisville, Ky. 40228	Train Show & Sale	T-Trak layout	
Dec.	9 (2nd Sun.)	Div. 10	Eastside Library			Weathered Rolling Stock
Jan.	6	Div. 10	Beaumont Library			
Feb.	3	Div. 10		Randy Coffman		

Bob Frankrone's home layout, the Louisville Southern Lines, was featured in the November 2002 issue of *Model Railroading* magazine. Currently, Bob authors a monthly column for the *NMRA Magazine* entitled *Love Those Loads*. To quote Bob; "The great thing about model railroading is that it is a multifaceted hobby and I am constantly finding new ways to enjoy this great pastime." Bob is a long time member of the NMRA and is very active in the MCR Division 8.