



THE LANTERN



APRIL 2009 VOLUME 11, ISSUE 4

Next Three Div. 10 Meetings to be at the Central Christian Church

Beginning with the April 5th monthly meeting, we will meet at the Central Christian Church on East Short Street, Lexington. The building is at the north end of the Esplanade. The parking lot is behind the building and can be reached by turning left off of East Short Street just past the building, or from an entrance just north of the main church building off of North Martin Luther King Jr. Blvd. Entrance is on the parking lot side (see arrow in picture below).



Bar Mills Hands On Clinic

by Fred Plymale

At our last meeting 15 members indicated an interest in building a Bar Mills wood kit at a Saturday morning 'hands on clinic'. Our meeting space at Central Christian Church provides us with a facility to conduct the clinic.

Art Fahie, owner of Bar Mills, has donated 16 "Revelia's Shipping & Storage" kits (see image on page 5) for the clinic. This kit retails for \$22.95 and can be used on any HO layout. David Revelia, a world class modeler, is one of the owners of PODS portable storage company.

The cost of the clinic to our Div. 10 members will be \$12.00, with the proceeds going into our treasury. We will build the kit, add nail holes, and practice a method of dry brushing wood siding to enhance weathering.

The Super's Column Bill Paulsell



For the next three months we will meet at Central Christian Church. If this works for us, it may become our permanent meeting home. The move required that we purchase a projector for the club. Such equipment is not cheap, so contributions will be much appreciated.

At our last board meeting (see page 7), in addition to meeting places and projectors, we discussed our membership policies. We would like for everyone to be an NMRA member. However, we want to promote model railroading any way we can, and we welcome others at all times.

The NMRA is a very important organization. I hate to think what the world of DCC would be like without standards for the manufacturers to follow in designing equipment. The interchangeability of equipment is something we all depend upon, and it would not be possible without the NMRA

We will have a sign up sheet at our April meeting, or you can reserve a seat for the clinic by mailing a check to me made out to 'MCR Division 10' before April 5th (Fred's address is on page 2).

The tentative date for the clinic is Saturday morning, April 18th, from 9 AM until noon. Any necessary additional time will be on April 25th. During this second day we'll put the structure on a base with ground cover. Mail your check now, or bring a check to the April 5th meeting. **see CLINIC, page 5**

standards.

I know NMRA membership is expensive. But your support directly benefits your own model railroading, you can receive a fine publications every month, and you have the opportunity to participate in many valuable activities.

I realize that not everyone can attend regional and national conventions, but they are very worthwhile. I have learned so much at them. The chance to meet and talk with other modelers is a great benefit. We have met folks who have been able to come to our club and present clinics. **see Super, page 7**



National Model Railroad Association

The Lantern is a monthly (except July) publication of Division 10, Mid Central Region (MCR), National Model Railroad Association. All opinions expressed herein are those of the authors, and do not necessarily reflect those of Division 10, the MCR, the NMRA, or anyone else.

Mid-Central Region Officers

- Dick Briggs, MMR, President
- Merlyn Jarman, Vice President
- Gary Sole, Treasurer
- Tom Atherton, Secretary



Committee Chairs

Achievement Program	Wendell Greer
Community Activities (open)	
Company Store & Programs	Bill Robbins
Contests	Ron Kercheval
Conventions & Shows	Ed Butcher
Estate Sales (open)	
Member Aid & Membership	Fred Plymale
Member Database	John Gorman
Newsletter & Photography	Stew Winstandley
Webmaster	Pete Birdsong
http://div10-mcr-nmra.org/	

In Recognition...

Many thanks to folks listed in the column below. They have given their time, materials and/or money to support our club. We encourage all members to help with financial support to *The Lantern* and our website and the Division 10 train shows. **Send your monetary contribution to our Treasurer.**

To be listed here your contribution needs to be at least \$20 in cash or material valued at \$50 or a total of 20 hours time within the last year. Division 10 receives NO monetary support from the NMRA or the Mid Central Region. Division 10 is recognized by the US government as a 501c3 corporation and your cash or material donations may be tax deductible.

Contributions of materials or time should be reported to John Gorman so that he can keep track of them.

To the right of each contributor's name is the date of his or her latest contribution. Whenever one makes a contribution of money, material or time, his or her date will be updated and for new contributors, their name will be added. Folks who have not made a contribution in one year will be dropped from the list.

Brian Jones	3/2009
Mark Sawyer	"
Ken Fortney	"
Tom Miller	"
William Hammer, MMR	2/2009
Alan Brock	1/2009
Randy Coffman	"
John Daniel	"
Bill Robbins	"
Robin Grider	12/08
Pete Birdsong, Jr., MMR	"
Don Burris	"
Chris Cord	"
Tim Day	"
Irv Frary	"
John Gorman	"
David Oswald	"
Fred Plymale	"
Tom Wilson	"
John Deville	11/08
Bill Paulsell	"
Lou Jaquith	10/08
Ron Kercheval	"
Phil Lester	"
David Battin	"
Orville Boes	"
Alan Bourne	"
Wendell Greer, MMR	"
Tom Krill	"
Raymond Cox	9/2008
Ron Saylor	8/2008
Stew Winstandley	"
Jim Campbell	7/2008
Ed Fuller	"
Michael Tyra	"
John Stokes	3/2008

*If you have made a donation of money, materials and/or time that is not reflected on this list, please notify John Gorman. **THANKS!***

Division 10 Officers and Board

Bill Paulsell, Superintendent	wpaulsell@aol.com
2269 Camberling Drive, Lexington, KY 40515	859 273 5821
Bill Robbins, Asst. Superintendent	bandbbears2@windstream.net
4704 Sunny Point, Lexington, KY 40515	859 271 1268
Lou Jaquith, Treasurer	bjaquith1@insightbb.com
352 Greenbriar Road, Lexington, KY 40503	859 276 1358
Tom Miller, Secretary	tom.miller@uconn.edu
3237 Saxon Drive, Lexington, KY 40503	859 224 8563
Board of Directors:	
Pete Birdsong, MMR	rrpete@insightbb.com
2308 The Woods Lane, Lexington, KY 40502	859 268 1462
Edward Butcher	ebutcher2@netzero.net
2152 Rollingdale Road, Lexington, KY 40513	859 333 1416
Wendell Greer, MMR	dewvalley@insightbb.com
212 Southpoint Drive, Lexington, KY 40515	859 272 8731
John Gorman	jgorman@bgmrs.com
143 Chenault Road, Lexington, KY 40502	859 269 3573
Ron Kercheval	mrkerch@insightbb.com
135 Idle Hour Drive, Lexington, KY 40502	859 269 8185
Fred Plymale	f.plymale@insightbb.com
3463 Snaffle Road, Lexington, KY 40513	859 223 7270
Stewart Winstandley	skw.monon@yahoo.com
210 Brannon Road, Nicholasville, KY 40356	859 224 2122

Scale Reproductions Hobby Shop

3073 Breckinridge Lane, Louisville, KY 40220 502 459 5849 www.srihobbies.com

HO & N Scales - NMRA members are eligible for our 10% discount

Weekdays 10 - 7:30, Saturday 10 - 5, Sunday 1 - 5



"Railroad" Pete

Witless & Clueless: The Continuing Saga of Larry Loungecar and Rivets O'Reilly

Created by "Railroad" Pete Birdsong, written by Mike Armstrong



Mike Armstrong

Rivets: Hey, Larry! What with this wire glued to the top of all the cars in your G Scale train? It looks like a telephone line and you're usin' your cars for poles!

Larry: Very funny, Rivets. That wire stretches from my QBG Cotton Mouth Cola sound car all the way to the engine. I just got it workin' again.

Rivets: What do ya mean?

Larry: Well, the first time I ran the wire under the cars, but it was too loose and got tangled up in all the wheels. You never seen such a wreck! I was goin' full speed around the curve at Potato Chip Creek, and one wheel got caught and then another and the next thing ya know, there were cars every where lookin' like an accordion from a polka band.

Rivets: So ya just put it on top of the train?

Larry: Well, I didn't know what else to do.

Rivets: Why not put the sound car right after the loco?

Larry: Aw, Rivets. The loco has steam sounds that drown out the Cotton Mouth Cola song...the one that goes: If you've got a cotton mouth and yer tongue sticks to your teeth, Cotton Mouth Cola will quench yer thirst, like a hot knife goes through grease. Oh...*(writers note: if you want to sing the song yourself, it goes to the tune of the Coca Cola song—with apologies to Coca Cola)*.

Rivets: Yeah, I get it. But there has to be a better way than this. What did the instructions tell ya.

Larry: Rivets, you know how those people are at QGB. If ya want it ta work right, ya gotta buy a do-hickey. Or if ya want ta do it another way, ya gotta buy some metal wheels. Or if ya want to do it right, put in an on/off switch. By the time ya go through all that, yer half crazy.

Rivets: Okay, let's give 'er a run and hear how it sounds.

Larry: All right, but I have to warn ya, I don't have all the bugs worked out yet.

Rivets: Why am I not surprised!? What bugs.

Larry: Well, the first time I tried it I hooked it into the sound system in the tender. Every time it went over one of those sound activation magnets, the thing would hiccup and the whistle

blew or the bell would ring before the song would go on playing.

Rivets: Larry, are we gonna hear this thing or not.

Larry: Have a little patience. I'm tryin' to give ya some background here. So then, I put on a on/off switch, a reed switch. But it was those doggone magnets again. Every time it would go over a magnet, it would turn on or off. I never got past the first line. I musta played that first line a hundred times before I took out the reed switch and my neighbor came over and threatened me.

Rivets: And now?!

Larry: Now, I hooked it into track power, so, when the track power is up, the song plays fast, and when the track power is low output, it plays slow.

Rivets: Maybe I don't want to hear it. That would drive me crazy.

Larry: My neighbor made a comment about that, too!

Rivets: Larry, with all those cars hooked together, how are ya gonna put them in storage?

Larry: I'm gonna build a storage shed right here on the layout.

Rivets: When ya gonna do that?

Larry: I thought you'd never ask. Here, grab a hammer and I get ya a can of Cotton Mouth Cola. We can sing the jingle while we work.

Rivets: Oh joy, oh joy! Just how I wanted to spend the afternoon.

Larry: Rivets, why do you always have to have the last word.

Rivets: I don't.

Mike Armstrong to receive the AP Author Certificate

At the May meeting of the Eastern Iowa Division of the Mid-Continent Region, Mike will receive his AP Author's Certificate. Mike has done national and division clinics to earn points toward this certificate. However, of the 42 points needed, 37 of them have come from writing the Witless & Clueless Column that is published in the Division 10 newsletter (his latest is on page 3) and the Mid-Continent Regional newsletter. It only took eight or nine years. "I wasn't doing anything else anyway."

A SUNDAY AFTERNOON WITH PAT GERSTLE



A scenery clinic was presented at our last meeting by Division 10 member Pat Gerstle. The photograph to the left shows Pat with a couple of Colorado rocks. During the meeting he glued fine, medium, and large rocks with bushes and trees to a bare hillside producing model scenery for southern Colorado or northern New Mexico.

After the meeting members toured Pat's Sn3 layout. The layout models the area around Chama, New Mexico. Chama (elevation 7875 ft. and eight railroad miles south of Colorado) is a town on one end of the Cumbres & Toltec narrow gauge railroad, which was once part of the Denver & Rio Grande. The photograph to the right is Pat's Lobato trestle over Wolf Creek north of Chama.

In the photograph below check out Pat's coal tippie and water tank. The prototype tippie was built in 1924, and is probably the only one of its kind still functional and is the only wooden one in existence. Pat's tippie was built from a kit of the one in Durango, Colo.

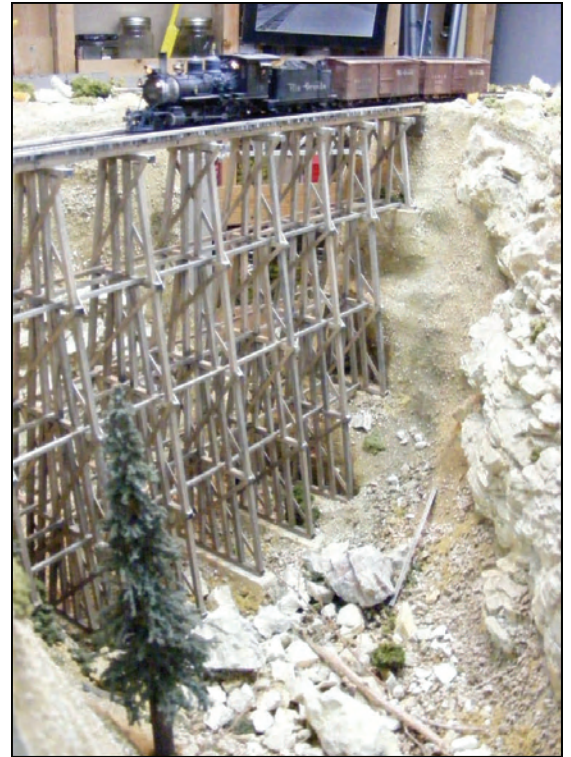


The 50,000 gallon water tank is a standard D&RGW design built about 1907. It is unique because it has double water-spouts allowing two locomotives to take on water at the same time.

Pat's locomotive at the tippie is a model of a 2-8-2 Mikado. In 1903 the D&RGW took delivery of fifteen 2-8-2 narrow gauge locomotives built by Baldwin Locomotive Works. They were eventually re-classified as K-27s and nicknamed "Mudhens" by their operating crews.

"Our thanks goes to Pat Gerstle for a fine program on scenery and for hosting us at his exquisitely beautiful layout. Pat showed us how some simple scenery could make a big difference in our layouts. The techniques were easy, but Pat showed his artistic touch.

His Sn3 layout is unique in our area. The scale is larger than HO and makes possible some intricate detailing." — *Bill Pausell, from The Super's Column*



Division 9 Hosts Joint Operations Session with MCR Division 10

Bob Weinheimer, Assistant Superintendent of Division 9, the "Coal Division" of the Mid Central Region, hosted a joint operations session on his Pennsylvania Southern HO scale layout for members of divisions 9 and 10 on February 20 and 21. This was the third time the two divisions have joined in events, the first being a trip by Division 9 members to a layout tour in Division 10, and the second a shared operations and layout tour event sponsored by Bob and Div 9.

by Pete Birdsong

The Div. 10 members arrived in Charleston, W.Va. from Lexington, Ky. around noon on Friday, and were joined for lunch by Bob. After lunch, Bob and Gary hosted the Div 10 members in operations on Bob's layout. Bob also served up a delicious beef stew and apple pie a la mode for supper, and Jerry and Greg arrived for the meal, which was followed by more operations during the evening.

On Saturday Bob and the Lexington constituents had breakfast at the restaurant of the Embassy Suites hotel in Charleston, which will be the site of the 2010 Mid Central Region convention. During the meal, discussions were held about plans for the convention, and the possibility of Div. 10 support. Afterwards a quick tour of downtown Charleston was followed by more operations, and then a short trip to an area hobby shop, before the Lexington crew headed for home.

Bob's layout has been thoughtfully planned and well executed, and it was a pleasure to operate on. Division 10 wishes to express its appreciation to Bob and the other Division 9 members for their hospitality. Pete and Bill presented Bob with a Division 10 HO scale 50' SRR box car, a Division 10 club car, and Randy, the owner of Coffman Graphics Solutions Company, gave Bob one his trademark Right Clamps. Randy took the picture for this article.

Joint sessions between divisions, whether operations sessions, layout tours, shows, or whatever, are a great way to meet new modelers, exchange ideas, develop new friendships, and certainly to have fun.



From Left: Randy Coffman, Bill Robbins and Pete Birdsong, Div. 10; Greg McCartney, Bob Weinheimer, Jerry Doyle, and Gary Burdette, Div. 9.

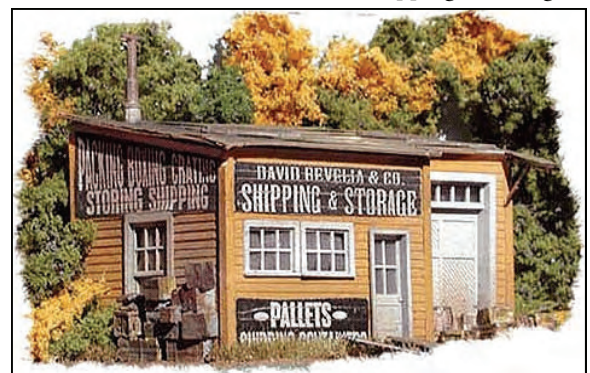
from **CLINIC**, page 1

A list of tools and supplies to bring to the clinic will be provided to all participants.



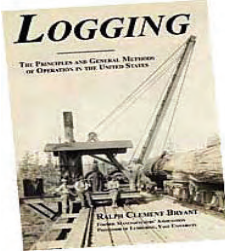
<http://www.pennsylvaniasouthern.com/>

Bar Mills' David Ravelia & Co. Shipping & Storage



Are You Ready for Spring? Next Meeting is Downtown, April 5th

Pete Birdsong will present a clinic on logging. He will cover four areas: getting timber to the railhead, the logging railroad, the mill, and outlets for the mill.



Pete has an On30 logging layout of the Fernwood Lumber Company in southern Mississippi. On the internet go to the web site address shown below to read about Fernwood Lumber.

<http://www.taplines.net/August/augindex.htm>



Logging near Fernwood, Mississippi in On30 gauge

April tour is to Tom Miller's Stonewall Express:

Scale: S scale-- American Flyer
 Layout size: 20' x 20'
 Power Control: 5 American Flyer Transformers
 Prototype: Mixed regional
 Period: Later half of the 20th century
 Style: Walk in and around
 Benchwork: L girder with layout height of 40 inches
 Roadbed: Hornasote boards on plywood
 Maximum grade: 1.5 percent
 Scenery Construction: Wire screen and painted cloth, waterways, trees, rock formations, stone, hydrocal cement over shaped foam.
 Background: Scenic photographs from western New York, Pennsylvania, Connecticut, and Kentucky.

Currently I am remodeling my layout, in about 20 by 20 feet with five main lines for continuous operation on three levels. Motive power consists of steam and diesel-electric locomotives with a mix of both freight and passenger trains. The freight cars are representative of the 40's, 50's and 60's with a few contemporary options including some scratch built models of flat cars, bulkhead pulpwood cars and other freight cars. The layout is wired for lighting and sound, with sounds of both steam and diesel locomotives accompanied by hissing, whistles, bells ringing, and the rumbling of trains headed down the track. Come for a ride on the "Stonewall Express!" —Tom Miller

On-Line Structures for April Bring n' Brag

Locomotives was the topic for March and we had another good turnout with seven diverse entries. Tom Miller brought his colorful New Haven electric in the McGinnis livery. Pete Birdsong entered three of his On30 Fernwood Lumber locos, and Ed Sims shared green and black Southern Trainmasters. Lou Jaquith had an interesting array of seven of his HO Paducah & Louisville diesels, and Stew Winstandley showed his N scale Corman SD40 in RJC's latest paint scheme. Don Burris entered a N scale Reading F unit, and Michael Tyra had an outstanding display of two Clear Branch Southern units and a hypothetical ALCo Century 620.

Pete squeaked by Lou for first place, and Michael's units handily took third. Congratulations to all for the excellent models.

Bring n' Brag Rules

Points are awarded for models as follows: One point is given for your first entry; a second point is given if that entry is "On Topic". You can have additional entries but you can only be awarded "entry" points for one item each month. Following peer judging, three points are awarded for First Place, two points for Second Place, and one point for Third Place. Multiple entries can each win points for placing.

2008-09 Bring n' Brag Standings by Total Points High to Low

	March 2009	Total
Pete Birdsong	5 (1st)	10
Tom Miller	2	9
Don Burris	2	8
Lou Jaquith	4 (2nd)	7
Stew Winstandley	2	7
Bill Robbins	-	5
Tim Day	-	4
Tom Krill	-	4
Phil Lester	-	4
Michael Tyra	3 (3rd)	3
Ed Sims	2	2
Dave Battin	-	2

Minutes of Executive Committee Meeting for NMRA MCR Division 10

February 19, 2009 7—8:30 PM

Superintendent Bill Paulsell's home

2269 Camberling Drive, Lexington

In Attendance: Bill Paulsell (presiding), Bill Robbins, Wendell Greer, Tom Miller, Ed Butcher, John Gorman, Pete Birdsong, Stew Winstandley.

Excused or Absent: Ron Kercheval, Fred Plymale, Lou Jaquith,.

New Business

Division 10 Meeting Site:

Bill Paulsell reported he had looked into Central Christian Church as a possible site for permanently meeting for Division 10. Plenty of parking exists at this site. Bill Paulsell has reserved the room at Central for April, May and June.

Trains, Planes and Automobiles

Pete Birdsong reported on the *Trains, Planes and Automobiles* program. A one day event is being considered on August 22nd. This was good publicity for our Division 10 program. We will wait to hear about specific arrangements.

LCD Projector for Division Programs

John Gorman reported on the possibility of buying an LCD projector. Discussion focused on considerations in buying one for the club. Price considerations were discussed as well as renting options. Resolution and fonts were discussed. One has now been purchased for our upcoming meetings.

Membership Issues:

We discussed membership and visitors at our meetings and agreed to continue the present policy. John will print members name labels for future meetings and have them available.

Hands-on Clinic

A hands-on clinic for the Division 10 members was considered. Issues of attendance, supplies, instructor and focus of the clinic were discussed. Fred Plymale has offered to provide the clinic (see article on page 1).

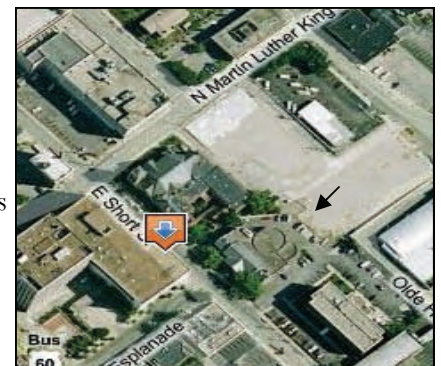
Treasurer's Report as of Feb. 28, 2009

Jan. 31, 2009 balance \$3,134.64; Deposits: Contributions \$95.00; Expenses: Lantern (\$59.01); Ending bal. \$3,170.63

from **SUPER, page 1** Wendell Greer is our Achievement Program chair. I recently met the requirements for my second certificate. Those requirements made me put in some improvements on my layout that I might never have done otherwise. A certificate is a piece of paper, but the work necessary to get it pushed me to be a better modeler.

We have four Master Model Railroaders in our club, Wendell, Pete Birdsong, Ray Grosser and Bill Hammer. They completed the requirements for seven certificates and it shows on their layouts. There are many great modelers who don't participate in that program, but in my case, the program is pushing me to improve my skills and to develop a better layout.

Our next meeting will feature a program on logging by Pete Birdsong (see page 5). His own On30 layout is a logging layout, so Pete can teach us much about this area. Bring n' Brag will showcase on-line structures. We will visit Tom Miller's S gauge layout, another unique scale in our group. I hope to see you April 5th at our new location.



THE LANTERN

NEWSLETTER FOR NMRA DIVISION 10

143 CHENAULT ROAD
LEXINGTON, KY 40502-2304
DIV10-MCR-NMRA.ORG



NEXT MEETING

LOGGING

2 PM, SUNDAY, APRIL 5TH AT
CENTRAL CHRISTIAN CHURCH

BRING & BRAG

ON-LINE STRUCTURES

TOUR

TOM MILLER
3237 SAXON DR.,
40503

AROUND THE BEND

MON.	DAY	HOST	PLACE/TIME	EVENT / PROGRAM	TOURS	BRING & BRAG
Apr.	5	Div 10	Central Christian Church, East Short Street, see article on page ?	Pete Birdsong Logging	Tom Miller	On-line Structures
Apr.- May	30-3	Div 9	Columbus, Ohio	MCR Convention The 21st Century Limited	Layouts and prototypes	
May	3	Div 10	Central Christian Church	Wendell Greer, Achievement Pro- gram Requirements	Rich Raspeni	Passenger Cars
June	7	Div 10	Central Christian Church	Bill Paulsell Resin Castings	Wendell Greer	Open Loads
July	5-11	NMRA	Connecticut Convention Center	No local meeting, national NMRA convention in Hartford, Conn.		

April 30 <http://mcr09convention.dwilke.org/FirstPage.html>

July 5 <http://www.nationaltrainshow.org/2009/hartford.html>