



# The Lantern



Volume 5 Issue 04

Division 10, Mid Central Region

April, 2003



**National  
Model  
Railroad  
Association**

*The Lantern* is a monthly publication of Division 10, Mid Central Region, National Model Railroad Association. Opinions expressed herein are those of the authors and do not necessarily reflect those of Division 10, the Mid Central Region, the NMRA, or anyone else.

### Mid-Central Region Officers

**Trustee:**

Michael C. Brestel  
3208 Vittmer Avenue  
Cincinnati, OH 45238  
513-661-2141  
mbrestel@eos.net

**President:**

Marty Vaughn  
557 Brice Road  
Reynoldsburg, OH 43066  
614-860-9023  
WmMVaughn@aol.com

**Vice President:**

Lou Dalton  
411 Deerfield Drive  
Cranberry Twp, PA 16066  
724-776-9724  
daltonlg@aol.com

**Secretary:**

Pete Birdsong  
2308 The Woods Lane  
Lexington, KY 40502  
859-268-1462  
rpete@insightbb.com

**Treasurer:**

Richard A. Flock  
337 Elm Drive  
Greensburg, PA 15601  
724-850-8882  
Rflock@bellatlantic.net

### Division 10 Officers and Board

**Superintendent:**

Bill Robbins  
4704 Sunny Point  
Lexington, KY 40515  
859-271-8839  
bandbbears2@aol.com

**Asst. Superintendent:**

Fritz Dutro  
306 Savannah Drive  
Richmond, KY 40475  
859-626-1876  
fritzdutro@yahoo.com

**Secretary:**

John Gorman  
143 Chenault Road  
Lexington, KY 40502  
859-269-3573  
jgorman@earthling.net

**Treasurer:**

Fred Plymale  
3463 Snaffle Road  
Lexington, KY 40502  
859-223-7270  
f729@aol.com

**Board of Directors:**

Wendell Greer  
212 Southpoint Drive  
Lexington, KY 40515  
859-272-8731  
dewvalley@juno.com

**Board of Directors:**

Pete Birdsong  
2308 The Woods Lane  
Lexington, KY 40502  
859-268-1462  
rpete@insightbb.com

**Board of Directors:**

Mike Armstrong  
4809 Agape Drive  
Lexington, KY 40514  
859-296-4746  
pika@gte.net



## MCR Now Has 11 Active Divisions

Division 10, recently re-activated itself, salutes and welcomes the newly re-activated Division 9. As of 22 March the MCR once again has 11 active Divisions in the Region. The reactivation meeting was a success; they have elected a slate of officers, and the NMRA gained a new member as well. The Superintendent is Jim Heilmann, the Assistant Superintendent is Nathan Robinette, and the Clerk/Treasurer is David Matheny. The officers' data can be found on the Board of Directors page of the MCR website. Division 9 will cover parts of Eastern KY, OH & WV.

- Pete

## Message From The Superintendent

Well, our first train show is behind us and even though we have no final numbers, I felt that it went very well. Vendors and visitors all told me they liked the show and several asked about the next one. The people at the Knights of Columbus were very helpful and said they enjoyed having us and invited us back.

I want to congratulate everyone in our club who worked and contributed to the show. It was a success because of the effort you all put into it. Those of you who worked on the show are too numerous to mention. However there are two people who need to be recognized. Fred Plymale was the one who initiated the idea and got our project started. Howard Coleman was our show manager and he is the one who organized the show to make it a success. Accolades Howard.

(Continued on page 5)

## NMRA Achievement Program Explained!

The Master Builder – Scenery category of the Achievement Program is about the prototypical rendering of scenery for your trains to run through. It does not matter what type of scenery you model as long as it looks realistic. To qualify for the Master Builder – Scenery certificate you must scenic a speci-

(Continued on page 5)

## April Clinic Features Scenic Techniques

It looks like old man winter has finally decided to call it quits here in central Kentucky. By the time you read this Lantern, members will have had a successful train show and toured several layouts and a 1:1 steam railroad in Ohio. You still will have a chance to

(Continued on page 6)

Contents	
1	Officer Listing MCR Division 9 Announcement Superintendent's Message NMRA AP Explained April Meeting Notes
2	Company Store Committee Chairs Witless vs. Clueless
3	Support Your Hobby Shops Sustaining Members & Patrons
4	Operations Update Bring n' Brag Report Company Store Report
5	Division 10 Model Railroad Data Base
6	Editor's Notes Bring n' Brag 2002 Winners & Schedule Coleman's Collection
7	Around The Bend



**“STUFF” & OPPORTUNITIES**

Mike Armstrong occasionally knows of *members’ overstock* situations and other opportunities to acquire or dispose of “stuff.” Get in touch with him to find out what’s currently available. These liquidations, generally via a web auction, bear a 15 to 20% fee.

In addition, *The Lantern* is in a position to advertise your “overstock” items, for a fee of 10%.

Contact Mike Walter to arrange for an ad, or Mike Armstrong for liquidations.

**Committee Chairs**

<b>Achievement Program</b>	David Greer
<b>Advertising</b>	Mike Walter
<b>Community Activities</b>	Open
<b>Company Store</b>	Chris Cord
<b>Contests</b>	Ron Kercheval
<b>Conventions &amp; Shows</b>	Fred Plymale
<b>Editor &amp; Webmaster</b>	John Gorman
<b>Estate Liquidations</b>	Mike Armstrong
<b>Member Aid</b>	Wendell Greer
<b>Membership</b>	Wendell Greer
<b>Photographer</b>	Pete Birdsong
<b>Programs</b>	Fritz Dutro

**Witless vs. Clueless**



*The Continuing Railroad Adventures of Rivets O’Reilly and Larry Loungecar*



**Created by ‘Railroad’ Pete Birdsong  
Written by Mike Armstrong**

**Rivets:** Hey, Larry, where ya goin’? The operatin’ session isn’t over yet!

**Larry:** Sorry, Rivets. I gotta run! The house keeper is comin’ tomorrow.

**Rivets:** So?! The night is young. We got trains to run!

**Larry:** You don’t understand, Rivets. The *house cleaner* is comin’ tomorrow. That means I gotta go home and clean house.

**Rivets:** Wait a minute! If you have a house cleaner comin’, why do you have to clean house?

**Larry:** Well, my wife doesn’t want the house cleaner to know that we get our house dirty, so I gotta go help clean it. If I don’t, I’m in trouble.

**Rivets:** What is she gonna do? Break the yoke in your eggs?

**Larry:** She’ll get my railroad magazines. I gotta protect ‘em.

**Rivets:** Larry, you ain’t makin’ any sense.

**Larry:** Okay, here is the story. I

like to have a magazine wherever I am at. So I keep MR in the living room. I have a copy RMC on the kitchen table. In the main bathroom I keep MM and in the guest bathroom I keep N Scale. RMJ is in the master bedroom; N Scale Railroading is in the dining room. I keep Garden Railways in the guest bedroom; and I keep CTT in the study. I keep OGR on the three season porch. And if I am not there, she will stack them all in one pile and set them in my train room.

**Rivets:** So?

**Larry:** Rivets, a man just can’t live like that! A man’s home is his castle! A man has his rights! A man has to protect what is his! A man has needs, and a railroad magazine in every room is at the top of the list.

**Rivets:** Larry, what are you talking about?

**Larry:** Well, if she looks at the cover and adds up what I spend on model railroad magazines each month, I’m afraid she’ll want to hire a Butler!



**BERKSHIRE TRAINS**  
Lionel • MTH • K-Line  
O • HO • N • Model Trains  
BURT BRASHEAR • Owner

**Special  
Orders  
Available**

- MTH & Lionel Complete Sets
- Track & accessories, Box Cars, T-Shirts
- Layaway available
- MC/VISA/Discover

209 Rosemont Garden  
Lexington, KY 40503  
(859) 278-8082  
Toll free: 877 609-0695  
FAX: (859) 873-6863

Summer Hours:  
Mon - Fri.: 1:00 to 6:00  
Saturday: 11:00 to 5:00  
Sunday: Closed

DAVID GRIFFIN

**BLUEGRASS MODEL  
RAILWAY SUPPLY**



SPECIALIZING IN HO AND N SCALE

**BOOKS  
VIDEOS  
MAGAZINES  
ACCESSO-  
RIES  
COMPLETE  
TRAIN SETS  
SPECIAL  
ORDERS  
PERSONAL  
SERVICE**

**Dealer for brass at  
20% off retail:  
Overland Models  
Hallmark  
Key Imports**

**Garden Springs Shopping Center  
Mon-Sat 10:00 - 9:00; Sun 1:00 - 7:00**

820 Lane Allen Road  
859 276 4240

Lexington, KY 40504  
1 888 797 3938

***In Appreciation....***

Many thanks to our Sustaining and Patron members for 2003 listed below. (Sustaining members contribute \$10.00 per year, and Patrons \$20 or more.) We encourage all members to help support *The Lantern* and our website. A number next to a name indicates a second or subsequent donation.

**2003 PATRONS**

Mike Armstrong	Pete Birdsong	Alan Brock
Howard Coleman	John Deville	Fritz Dutro
John Gorman	Ray & Renee	Lou Jaquith
Skip Keyser	Bob Lawson	Bill Paulsell
Fred Plymale	Bill Robbins	Ron Saylor
Mike Walter		

**2003 SUSTAINING MEMBERS**

Richard Crane	Phil Ditchen
---------------	--------------

## ***Scale Reproductions***

3073 Breckinridge Lane McMahan Plaza  
Louisville, KY 40220  
(502) 459-5849 [brian@sri.win.net](mailto:brian@sri.win.net)

- Specializing in HO and N scale model railroading
- Large selection of accessories, decals, detailing parts and reference.
- Large selection of DCC items including Digitrax, Lenz, NCE and more!
- Most items 10%-20% off retail price everyday.
- We also give an additional 10% discount to NMRA members!!
- Special order and mail order service available.

**Support Our Local Hobby Shops**

Our advertisers are supporting us with their ads, so let's support them with our business! A strong retail network is vital to keeping the hobby visible to the public, and provides valuable help to newcomers. By our patronage of their stores, they are able to continue bringing more people into the hobby, and promoting our organization.....

**win-win!!**

## Operations Update

Operations has continued to advance since last reported here in the Lantern, maybe an update would be of interest.

We continue to hold the monthly sessions on the third Tuesday of each month, from 7:00 to 9:00 pm, alternating at Pete Birdsong's Chesapeake & McKenna Ridge and Bill Robbins' Seattle, Portland & Spokane layouts. In addition, a small group of "serious" operators meets on Saturday mornings once a month.

Bill is using a card order system, sequential scheduling (no timetable) and dual-cab block control, with one mainline and six yard operations running simultaneously. Things are continuing to run very well, with minimum derailments, or an occasional problem with a block switch mis-thrown. Bill recently migrated to magnetic uncouplers, a move welcomed by some and lamented by others. Bill is also planning a conversion to a Digitrax Empire Builder DCC control system, and has already begun some of the installation.

Operations at Pete's features several computer-controlled aspects: car movement instructions (switch lists), a time schedule, and a fast clock. In addition, two computers are connected to the Digitrax digital control system (LocoNet) for use in programming and debugging decoders and for future use in a CTC system. "Radio" dispatching has been recently inaugurated, using telephone systems serving for radios - two base units on speaker-phone at the dispatch station, and two hand-held portable units with headsets used by two towermen in the train room. One or more engineers, running anywhere from one to four trains on radio throttles, rounds out the basic crew, who all rotate through the three job assignments. The towermen monitor train movements in their districts, report them to the dispatcher, and then relay dispatcher instructions to the engineer. The dispatcher tracks train locations and movements on a magnetic dispatch board. All three jobs present quite a challenge, and loads of fun.

The plan is to attempt six mainline

## Bring n' Brag March, 2003

Non-revenue (including Maintenance of Way and Caboose) was the theme for the March meeting and there was a great variety of entries!

We had six modeling entries: Fritz Dutro with a great looking HO scale Wheeling and Lake Erie boom tender with shovel loaded on a flat car, Mike Baskette joining the ranks with a fantastically weathered Clinchfield ballast hopper, Mike Walter with a great N scale BNSF diorama of a crane and cars, Howard Coleman with a MOW flat car with ties, Bill Robbins with a pair of neat little Fairmont Speeders, and Chris Cord rounding things out with a sharp looking DT&I caboose. First place went to Fritz while Mike Baskette squeaked by Mike Walter for second by only one vote.

There were three photo entries: Mike Baskette had a nice shot of a Southern GP38 in the long missed tuxedo scheme, Fritz Dutro had a photo of a C&NW Dash 9 wide cab model (Don't worry, he isn't changing eras on us!), and Howard Coleman with a colorful shot of his layout. Fritz took first again, with Mike second and Howard third. Congratulations to all of you for participating!

*- Ron Kercheval*

trains in multiple directions on a single-line main simultaneously. Based on the success of the telephone usage, the core crew has purchased 6 FRS radios; evaluation of various headphone options for the radios will begin soon.

More layouts are contemplating operations sessions in the future, as interest in this aspect of the hobby continues, and a clinic is planned for an upcoming Sunday meeting.

If you'd like to know more, contact one of the regular operators: Pete Birdsong, Chris Cord, John Gorman, David Greer, Bill Robbins or Mike Walter.

*- Pete Birdsong*

## News From Our Company Store Manager

### Monthly Door Prize/Raffle

After a discussion among several members on the door prize drawings it was decided that each person receives a ticket as they enter the meeting and additional tickets can be purchased for \$1.00. Also, only one or two gift certificates will be given away each month instead of three. The supply of certificates will determine how many are given away.

March's winner was Richard Crane who received a gift certificate to Bluegrass Model Railway Supply.

### Company Store

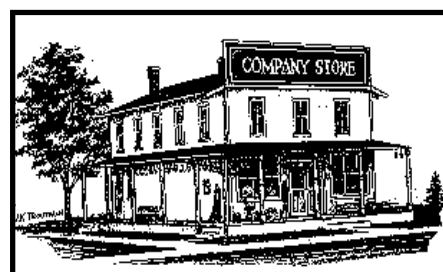
We received our first order of nametags from Lexington Trophy Co. Eleven members have ordered name tags so far. Show your Division 10 pride by ordering a nametag for only \$13.

### New Items in the Works

Currently we are considering two new products to add to the company store. The first is a Division 10 - NMRA coffee mug. The mugs would have the NMRA logo and the Division 10 logo on it. The cost would be around \$5. The next item we're currently researching is a club car. Interest has been expressed in doing a run of Kentucky Utilities-CSX (KUCX) Coalporter hoppers in HO scale. If you have any suggestions for a club car let me know.

If you have any ideas for items you would like to see in the Company Store please contact Chris Cord.

*- Chris Cord*



*Super's Message (Continued from page 1)*

I would also like to thank the people who supplied and set up the N gauge and the HO gauge layouts. You all did a great job and everyone enjoyed seeing them.

Because of the enthusiasm of all of you who participated in the show, it is my hope that the show will become a regular event. It was certainly a great club project.

#### - Bill

*AP Explained (Continued from page 1)*

fied amount of area, take a set of photos of it, prepare a list of materials and methods used in its construction, and have it judged for a Merit Award.

The amount of required scened area depends on the scale you are modeling. For O, S, HO, and N you must complete 60, 45, 32, or 18 square feet respectively. G gauge can qualify also but does have to be realistic as with the other scales and with appropriately scaled features. The scened area must contain the necessary elements of terrain, structures, background, lighting, and realism.

Terrain is all the natural features in scenery such as rocks, water, trees, hills, roads, etc. These features should be sized and placed in a prototypical manner to give a realistic effect. Scenes should blend together and not have abrupt transitions from city to rural unless scenic dividers are used.

Structures are judged based on the prototypical suitability, placement, and over all appearance. These structures are not judged from a construction perspective as in the Master Builder – Structures category. Structures include buildings, bridges, culverts or any other man made constructions. Structures should be in the ground not sitting on top of it. They should be appropriately weathered and look like they belong in the scene. Track should be painted, weathered, ballasted, and switch machines need to be hidden.

The background should continue the illusion of reality that the rest of your scenery represents. It does not have to be an artist quality painting but should

enhance the foreground and not detract from it. A good litmus test is to ask yourself how it will look in the background of a photograph of your scenery.

Lighting is also important. It can be divided into three aspects, railroad related lights, structure lights, and the overall layout lighting. Full daylight lighting is acceptable but evidence of lighting must still be present. By this I mean signals, light fixtures on building, street light poles, etc. should be present even if non-functional. Of course, if they are functional that will earn more points.

The documentation required are a set of photographs, or video, and a written

description of the intended setting and the scenic details. The description should also list the materials and methods used in the construction of your scenery. The photographs do not have to be professional quality but should show the details of your scenery. One of the photographs should be an overall shot of the layout. Fill out a Statement of Qualifications form and merit judging form from the NMRA web site, and you will be ready for judging. Even if you have no immediate plans of pursuing this certificate, looking over the requirements will give you an idea of what makes good scenery.

- *Dave Green* Div. 10 AP Chairman

## ***Division 10 Model Railroad Data Base***

This month our newest feature returns to the Lantern. Hopefully, each month we will present the basic information about the layout to be toured. The layout builder/owner will provide the information and Pete or I will get a few pictures.

The plan is to put the vital statistics in the newsletter (see below) while building a data base of the layouts of Division 10 members. This information along with pictures and possibly a short history and/or biography would be available on our web site. This will allow new and prospective members as well as interested visitors to Central Kentucky an opportunity to see all that we have to offer.

April's layout is **Mike Walter's** N scale BNSF St. Joe Subdivision

- *John*

**Mike Walter**



**BNSF St. Joe Subdivision**

*Name:* BNSF St. Joe Subdivision (fictitious)

*Scale:* N scale - 1:160

*Size:* 9' x 14'

*Period:* Post merger to present day

*Style:* Walk around double track main for display purposes, single track main for operations.

*Height:* 50" to 53"

*Benchwork:* Sectional in design, wood frame grid with 2" foam board base

*Track:* Atlas code 83 flex

*Mainline Length:* Approximately 150 feet

*Turnouts:* Approx. 75 Peco turnouts w/Peco switch machines, ground throws in locomotive facility

*Radius:* 19" min. radius on all mainline 15" min. on two reverse loops

*Grade:* 2% maximum

*Scenery:* Combination of foam, Sculptamold, plaster & Woodland scenics products.

*Control:* Digitrax DCC for all train control as well as reversing loops.

*Roster:* 45 locos, all decoder equipped

*Comments:* Layout construction started from scratch on 01-01-02. Multiple train operation and the ability to run 12' long trains were very important in the track planning. Stacks, Racks, and Piggy Backs are the rolling stock of choice as well as coal and grain unit trains and the occasional passenger trains.

*April's Meeting (Continued from page 1)*

attend the April meeting at Eagle Creek library on Richmond Road.

The clinics seem to be getting better and better. Last month Mike Baskette gave a very professionally presented clinic on decaling and weathering freight cars. Those of you who attended were given a presentation from opening the kit box to a professionally weathered and decaled car finished and sitting on the rails. Thanks, Mike for a great clinic. Our tour fell victim to the remnants of the ice storm. I am optimistic that we can reschedule.

This month's tour will be at Mike Walter's in Richmond. Mike models the up to the minute BNSF in N scale. Mike started the layout just over a year ago and has trains rolling, DCC installed and has a good start on scenery, truly an amazing amount of work for a new pike. You will want to see the layout as Mike has recently acquired more right of way and will be expanding the layout soon.

The clinic this month will involve another of my presentations. The first clinic will involve basics of foam scenery, or as I call it, "turning the blue into green". I have recently completed a diorama on which I will explain scenic techniques that I use. The second clinic will involve chalk weathering of structures and freight cars.

Looking forward to seeing all of you at the meeting on Sunday.

*- Fritz*

## **Editor's Notes**

In my book our Division 10 Train Show was a great success. The vendors were happy, the attendees were happy and lots of money exchanged hands. We sold over 60 tables and I believe we had near 200 paying attendees. By my reckoning the club made a few dollars as well. Congratulations to us all!

I'll be in Timonium during the April meeting but hope to see you all in May.

*- John*

## **2003 Bring n' Brag Scores**

<b>MODELS</b>			<b>PHOTOS</b>		
<b>High to Low or Tie</b>	<b>Mar</b>	<b>YTD</b>	<b>High to Low or Tie</b>	<b>Mar</b>	<b>YTD</b>
<b>Fritz Dutro (1st)</b>	5	15	<b>Fritz Dutro (1st)</b>	5	14
Howard Coleman	2	9	<b>Howard Coleman (3rd)</b>	3	6
<b>Mike Walter (3rd)</b>	3	7	Pete Birdsong		5
Bill Robbins	2	5	Randy Coffman		5
<b>Mike Baskette (2nd)</b>	4	4	<b>Mike Baskette (2nd)</b>	4	4
Pete Birdsong		2			
Chris Cord	2	2			

## **Bring n' Brag Schedule for 2003**

**April - Stations: Passenger and Freight**

**May - Freight Cars**

**June - 'Anything Goes': All classifications**

**July - Favorite Trains**

**Aug. - On-line Structures (except stations)**

**Sept. - Diesel Locomotives**

**Oct. - Commercial Structures: Industrial, businesses, municipal, etc.**

**Nov. - Passenger Cars**

**Dec. - Open Loads: Flat Cars, Gondolas and Intermodal**

*- Ron Kercheval*

## **COLEMAN'S COLLECTION**

*(Favorite Railroad Websites from Howard Coleman)*

Here is your chance to see how things were NORTH IN ALASKA. Seems like some fun surfing on these sites:

**The White Pass & Yukon Route - Friends & Links**

**<http://www.whitepassrailroad.com/links/railfan.html>**

*- Howard*



# AROUND THE BEND

MON	DAY	EVENT	PLACE/TIME	PROGRAM	TOUR	CONTEST
APR	6	MCR DIV 10	Eagle Creek Library, Lexington off of Richmond Road Sunday, 2:00 pm	Fritz Dutro Chalk weathering cars and structures and Foam scenery construction	Mike Walter's N Scale BNSF Richmond, Kentucky	Passenger and Freight Stations
APR	11	BGRRC	Meadowthorpe Community Center Friday, 7:30 pm	To Be Announced		
APR	24-27	MCR DIV 7 Convention	Springdale Best Western, Rt 4 and I-275, Cincinnati, OH	Contact Charlie Atkinson, atrain@juno.com, or Div website: <a href="http://www.cincy-div7.org/">http://www.cincy-div7.org/</a>		
MAY	4	MCR DIV 10	Beaumont Library, Lexington off of Harrodsburg Road Sunday, 2:00 pm	Fred Plymale and Bill Robbins on building and painting structures	Wendell Greer's HO Scale Dew Line Railroad	Freight Cars
MAY	9	BGRRC	Meadowthorpe Community Center, Friday, 7:30 pm	Bill Paulsell: Resin Casting		
JUNE	1	MCR DIV 10	Tates Creek Library, Lexington off of Tates Creek Road Sunday, 2:00 pm	Wendell Greer on Signaling, practice and logic	To Be Announced	'Anything Goes'
JULY	13	MCR DIV 10	Ray & Renee Grosser's (Directions to Follow) Sunday, 2:00 pm	To Be Announced	Ray & Renee Grosser's Nostalgia Trip Soo Line HO Railroad	Favorite Trains
JULY	13-19	NMRA Nat'l Convention	Toronto, Canada	See Website for full details: <a href="http://www.ml2003.com/pages/home.html">http://www.ml2003.com/pages/home.html</a>		
AUG	3	MCR DIV 10	Assorted Hosts Danville, KY Sunday, 1:00 pm	Self Guided Tour (Directions to Follow)	Bob Lawson John Bowling Robin Grider	On-line Structures (except stations)
MAY 2004	13-16	MCR Convention	Four Points Sheraton, Cranberry, PA	Contact Div 2 for more information		
JULY 2004	4-11	NMRA Nat'l Convention	Seattle, WA	See Website for full details: <a href="http://www.nmra2004.org/">http://www.nmra2004.org/</a>		
MAY 2005	12-15	MCR Convention	Comfort Inn, Austinburg, OH	Contact: Matt Kross e-mail mkross@earthlink.net		
JULY 2005	TBD	NMRA Nat'l Convention	TBD, Cincinnati			

**Next Meeting:**  
**Eagle Creek Library**  
**Lexington,**  
**Sunday, April 6,**  
**at 2:00 pm**

**Clinic:**  
**Foam Scenery**  
**Construction & Chalk**  
**Weathering**

**Tour:**  
**Mike Walter's**  
**N Scale BNSF Layout**

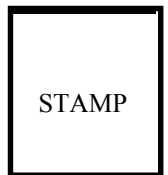
**Bring & Brag:**  
**Stations: Passenger and**  
**Freight**



---

# The Lantern

Published most months by Division 10  
Mid Central Region  
National Model Railroad Association  
143 Chenault Road,  
Lexington, KY 40502  
jgorman@earthling.net  
On-Line: [nmra-division10.railfan.net/](http://nmra-division10.railfan.net/)



**Division 10**  
**Welcomes the**  
**New Division 9!**



**MCR Div. 10**  
**Operations**  
**Update!**

(See Inside)

---