



# The Lantern



Volume 5 Issue 02

Division 10, Mid Central Region

February, 2003



**National  
Model  
Railroad  
Association**

The *Lantern* is a monthly publication of Division 10, Mid Central Region, National Model Railroad Association. Opinions expressed herein are those of the authors and do not necessarily reflect those of Division 10, the Mid Central Region, the NMRA, or anyone else.

### Mid-Central Region Officers

**Trustee:**

Michael C. Brestel  
3208 Vittmer Avenue  
Cincinnati, OH 45238  
513-661-2141  
mbrestel@eos.net

**President:**

Marty Vaughn  
557 Brice Road  
Reynoldsburg, OH 43068  
614-860-9023  
WmMVAughn@aol.com

**Vice President:**

Lou Dalton  
411 Deerfield Drive  
Cranberry Twp, PA 16066  
724-776-9724  
daltonlg@aol.com

**Secretary:**

Pete Birdsong  
2308 The Woods Lane  
Lexington, KY 40502  
859 268 1462  
rpete@insightbb.com

**Treasurer:**

Richard A. Flock  
337 Elm Drive  
Greensburg, PA 15601  
724-850-8882  
Rflock@bellatlantic.net

### Division 10 Officers and Board

**Superintendent:**

Bill Robbins  
4704 Sunny Point  
Lexington, KY 40515  
859-271-8839  
bandbbears2@aol.com

**Asst. Superintendent:**

Fritz Dutro  
306 Savannah Drive  
Richmond, KY 40475  
859-626-1876  
fritzdutro@yahoo.com

**Secretary:**

John Gorman  
143 Chenault Road  
Lexington, KY 40502  
859-269-3573  
jgorman@earthling.net

**Treasurer:**

Fred Plymale  
3463 Snaffle Road  
Lexington, KY 40513  
859-223-7270  
f729@aol.com

**Board of Directors:**

Wendell Greer  
212 Southpoint Drive  
Lexington, KY 40515  
859-272-8731  
dewvalley@juno.com

**Board of Directors:**

Pete Birdsong  
2308 The Woods Lane  
Lexington, KY 40502  
859 268 1462  
rpete@insightbb.com

**Board of Directors:**

Mike Armstrong  
4809 Agape Drive  
Lexington, KY 40514  
859-296-4746  
pika@gte.net



## Time for a Change

The December Bulletin you recently received from the National office may be one of the most important Bulletin's you will ever receive. Please go to page 29 and attach your mailing label to validate your important ballot. Vote and make yourself heard.

I have resigned as a member of the MCR Nominating Committee so I could endorse candidates who I think will do the best job for Div. 10 members as Mid Central Region Trustee and Mid Central Region President. Had I

*(Continued on page 4)*

## Message From The Superintendent

I would like to welcome Richard Crane to our meetings and extend our invitation to return. Welcome also to our newest member Joshua Johnson. We hope to see you at our meetings too. Josh's specialty is DCC. I invite all of our members and guests to come to our informal Tuesday evenings get together. The subject is "trains and other stuff". Pete Birdsong and I sponsor monthly operating sessions - we take every other month. Pete is DCC w/ computer, mine is analog with a card system.

For those of you who missed it, the Central Bank Gallery presented "Lure of the Rail", photographs, by Randall Coffman in December. His photographs of trains were beautiful. Lucky for us he doesn't know about our monthly photo contest.

Our hard working Chris Cord is working on several projects for us:

*(Continued on page 6)*

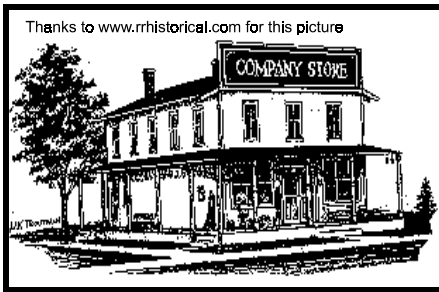
## NMRA Achievement Program Explained!

This month I am going to start discussing the eleven categories in the Achievement Program that make up Master Model Railroader (MMR). You may recall that to qualify for MMR you must complete seven of the eleven categories. I am going to skip the first two categories (locomotives and cars) for now and start with Master Builder - Structures. I chose to do this since almost all modelers have built structures at one time or another.

To qualify for Master Builder - Structures, you must construct twelve structures of six different types. Types could include, brick buildings, wood buildings, water towers, stations, industries, docks, bridges, etc. They do not have to be the same scale nor on a layout. Of the six types, at least one must be a bridge or trestle. The bridge should be appropriately designed to carry its load

*(Continued on page 5)*

| Contents |   |
|----------|---|
| 1        | Officer Listing<br>"Time for a Change"<br>Superintendent's Message<br>NMRA AP Explained |
| 2        | Company Store<br>Committee Chairs<br>Witless vs. Clueless                               |
| 3        | Support Your Hobby Shops<br>Sustaining Members & Patrons                                |
| 4        | Bring n' Brag Report<br>Treasures Report<br>February's Meeting                          |
| 5        | Division 10 Model Railroad Data Base<br>Bring n' Brag 2003 Sched.                       |
| 8        | Editor's Notes<br>Bring n' Brag 2002 Winners  |
| 9        | Around The Bend   |



**“STUFF” & OPPORTUNITIES**

Mike Armstrong occasionally knows of *members’ overstock* situations and other opportunities to acquire or dispose of “stuff.” Get in touch with him to find out what’s currently available. These liquidations, generally via a web auction, bear a 15 to 20% fee.

In addition, *The Lantern* is in a position to advertise your “overstock” items, for a fee of 10%.

Contact Mike Walter to arrange for an ad, or Mike Armstrong for liquidations.

**Committee Chairs**

|                                |                |
|--------------------------------|----------------|
| <b>Achievement Program</b>     | David Greer    |
| <b>Advertising</b>             | Mike Walter    |
| <b>Community Activities</b>    | Open           |
| <b>Company Store</b>           | Chris Cord     |
| <b>Contests</b>                | Ron Kercheval  |
| <b>Conventions &amp; Shows</b> | Fred Plymale   |
| <b>Editor &amp; Webmaster</b>  | John Gorman    |
| <b>Estate Liquidations</b>     | Mike Armstrong |
| <b>Member Aid</b>              | Wendell Greer  |
| <b>Membership</b>              | Wendell Greer  |
| <b>Photographer</b>            | Pete Birdsong  |
| <b>Programs</b>                | Fritz Dutro    |

**Witless vs. Clueless**

*The Continuing Railroad Adventures of Rivets O’Reilly and Larry Loungecar*



Created by ‘Railroad’ Pete Birdsong  
Written by Mike Armstrong

Rivets: Hey, Larry! What’s new? I haven’t seen you for awhile.

Larry: Well, Rivets, I have been working on my new conversion project. It sure takes a lot of energy!

Rivets: I didn’t know you were working on a new project. Tell me about it.

Larry: It is simple really. I have decided to model in one major scale instead of two. I am switching my HO layout to and N scale layout. Tryin’ to do both is breakin’ me up! It is hard enough to squirrel away money from my wife, but after a while there is so much stuff that even my most creative lies won’t work.

Rivets: Larry, I hate to tell you this, but your most creative lies always sound just like what they are.

Larry: Says you! Anyway here is what I have done so far. I have taken off all of my HO equipment and laid a 4 inch layer of foam board on the layout. I am starting all over with N scale scenery. I have a four loop mainline with passing tracks. It

is all up and down with a 2% grade, I have four towns, two yards and several industries and warehouses along the way. There are several bridges, mountain tunnels and rivers. It is looking pretty good!

Rivets: Wow! Larry, I am impressed, you have done more than I ever thought you would have. You tore out the HO and put in all that N Scale. Let’s go in. I want to see it!

Larry: We can’t ..

Rivets: Why not. Come on. Let’s go!

Larry: Well, all this work I have done, I have done in my head, thinkin’ about it when I go to sleep. It looks good in my dreams.

Rivets: Well, when do you plan to tear out your HO?

Larry: What? Are ya nuts? After all the work I have put in, I not tearin’ that out!

Rivets: Larry, there is something wrong with you! If I knew what it was I’d fix it . . . more for me than you!



**BERKSHIRE TRAINS**  
Lionel • MTH • K-Line  
O • HO • N • Model Trains  
BURT BRASHEAR • Owner

**Special  
Orders  
Available**

- MTH & Lionel Complete Sets
- Track & accessories, Box Cars, T-Shirts
- Layaway available
- MC/VISA/Discover

209 Rosemont Garden  
Lexington, KY 40503  
(859) 278-8082  
Toll free: 877 609-0695  
FAX: (859) 873-6863

**Summer Hours:**  
Mon - Fri.: 1:00 to 6:00  
Saturday: 11:00 to 5:00  
Sunday: Closed

DAVID GRIFFIN  
**BLUEGRASS MODEL  
RAILWAY SUPPLY**



SPECIALIZING IN HO AND N SCALE

BOOKS  
VIDEOS  
MAGAZINES  
ACCESSO-  
RIES  
COMPLETE  
TRAIN SETS  
SPECIAL  
ORDERS  
PERSONAL  
SERVICE

**Dealer for brass at  
20% off retail:  
Overland Models  
Hallmark  
Key Imports**

Garden Springs Shopping Center  
Mon-Sat 10:00 - 9:00; Sun 1:00 - 7:00

820 Lane Allen Road  
859 276 4240

Lexington, KY 40504  
1 888 797 3938

### *In Appreciation....*

Many thanks to our Sustaining and Patron members for 2003 listed below. (Sustaining members contribute \$10.00 per year, and Patrons \$20 or more.) We encourage all members to help support *The Lantern* and our website. A number next to a name indicates a second or subsequent donation.

#### 2003 PATRONS

|               |             |                |              |
|---------------|-------------|----------------|--------------|
| Pete Birdsong | Alan Brock  | Howard Coleman | John Deville |
| Fritz Dutro   | John Gorman | Skip Keyser    | Fred Plymale |
| Bill Robbins  | Ron Saylor  |                |              |

#### 2003 SUSTAINING MEMBERS

Richard Crane

**Support Our Local Hobby Shops**

Our advertisers are supporting us with their ads, so let's support them with our business! A strong retail network is vital to keeping the hobby visible to the public, and provides valuable help to newcomers. By our patronage of their stores, they are able to continue bringing more people into the hobby, and promoting our organization.....

**win-win!!**

## ***Roundtable Discussion on Design & Planning for February's Meeting***

Snowy greetings from Richmond! As frigid as it has been the last two weeks, everyone should be getting a lot of modeling done. I was happy to see a large turnout last month for the Pat Gerstle clinic and Alan Brock's layout tour. Those of you who missed both can get caught up by visiting the photo section of the on-line Lantern.

This month we can look forward to a roundtable clinic presented by Pat Gerstle, Franklin Miller, and yours truly on layout design and track planning. I know that Franklin will be demonstrating a track planning computer assisted design program for model railroads. Other topics will be track planning for realistic operations and scenery, sound practices for track design, and planning for an operations crew. Our layout tour will be hosted by Mike Armstrong. Mike models in HO, N and G scales (any that I missed Mike?). Mike's house is located off Harrodsburg road convenient to where we will be holding the clinic. Maps will be provided at the meeting.

I hope to be making an announcement regarding an upcoming tour of club layouts in Ohio along with a tour of a real live steam engine repair and overhaul shop (they have old diesels too for those of you who go for such things). I hope to see all of you at the meeting and tour this month.

*-Fritz Dutro*

---

## ***Treasures Report***

Our current balance is \$3,913.29.

We are accepting annual donations from our Patrons or Sponsors in December for the 2003-year. Please be generous and send your checks made out to NMRA MCR DIV. 10 to Fred Plymale, 3463 Snaffle Rd. Lexington, KY 40513.

*-Fred*

## ***Bring n' Brag January, 2003***

Bring n' Brag 2003 got off to a great start with five entries per category. January's theme was houses and rural structures.

In the modeling section, we had the following: Fritz Dutro had an interesting breezeway barn, Bill Robbins had a nice grouping of a rustic house and out-buildings, Pete Birdsong entered an excellent looking N scale hand-laid turnout as well as an N scale house, and Howard Coleman had a nicely decorated barn and silo. Fritz took first place with his beautiful barn, Howard jumped up and grabbed second with his barn, and Bill took third place with his display. Way to go, Howard!

We had another good showing of photos, too. Fritz Dutro had an excellent shot of a Wheeling & Lake Erie train on a trestle; and Pete Birdsong covered three bases with a neat photo of an Illinois Central Passenger train, a modern truck terminal, and a Santa Fe 4-8-4, these three from his layout. He also covered home with a nice backhead shot of a real locomotive. First place went to Fritz' train shot, second to Pete's IC passenger train, and third place to Pete's backhead shot.

Thanks to everybody for all their hard work and for carrying the enthusiasm over into 2003! Next month's category is Steam Locomotives.

*-Ron Kercheval*

---

*Time for a Change (Continued from page 1)*

not resigned, I might have been subjected to the threats and intimidation similar to those that led to the KingPin being removed from the MCR web site and Marty Vaughn's endorsement of a trustee candidate being challenged.

Both of the candidates I endorse are Master Model Railroaders not politicians. They are interested in modeling and NMRA modelers not just setting at the head table.

I urge you to vote for MILES HALE MMR for MCR trustee. He is very active in helping members develop their modeling skills and will be a strong advocate on behalf of members at the division level. Member benefits and service to the rank and file will take priority over politics when Miles is our new trustee.

Ten years ago our membership was close to 25,842 and in the latest Bulletin is was 20,841. That is a significant lose of members or "market share" in the real business world. You have been told by a recent edition of the KingPin that trustees do not represent those who elect them but have a fiduciary responsibility to the National NMRA to manage its affairs in a business like manner. If in the past five or six years you think the NMRA has been well managed and they have fulfilled that responsibility, then vote for the incumbent and "status quo". If you feel they have not done so and we need fresh ideas and new management team, show your support for change and vote for MILES HALE MMR as the MCR Trustee. Your vote is important so please mail it today.

In the near future you will be receiving a ballot for officers in the MCR. The two candidates for MCR president in the KingPin before it was removed from the web site were HOWARD SMITH MMR and Dick Flock our current MCR treasurer. There could be a last minute candidate added to the ballot for president, but I doubt it. I urge you to vote for HOWARD SMITH MMR for MCR president. Howard made two trips to Div. 10 and helped several of our members including Wendell Greer who became our first MMR, get started on the AP awards they deserved. He is a dedicated modeler who continues to win national and regional awards. He will make a fine MCR president and I hope you will support him with you vote.

I'm sorry to miss the next clinic on track planning in Feb. but I must take Betty to Florida to get warm and play in a golf tournament.

*-Fred*

*AP Explained (Continued from page 1)*

and look prototypical. The bridge does not have to be large or even a railroad bridge.

At least half of the twelve structures are required to be scratch built. This just means that the materials used came from a hobby shop, not a kit. You can use plans from a kit but not the materials. If you design the plans yourself that is a bonus. Items such as windows, doors, lights, chimneys, siding, and brick sheet, may be purchased items.

The other six structures, if from kits, must be super detailed. This just means that you have done more than just glue it together. It should have details added such as, signs, ladders, roof details, interiors, weathering, lights, etc. All things that add detail to the kit count as super detailing.

Six of the twelve structures must be judged in an NMRA contest or in an AP Merit Award judging. They must earn at least 87.5 points. All twelve structures need to be described on the Statement of Qualification (SOQ) form. On the form you should identify for each structure, scratch built features, along with commercial or kit parts used. All the necessary forms are available on the NMRA web site under Achievement Program or I can get them for you if you do not have web access.

Many of the Bring and Brag models we see each month would qualify towards this category. One of the objectives of the AP is to encourage you to develop your skills and try new things. So when you get ready to build that next structure why not try scratch building it?

*-David Greer*



Can anyone tell me what this is? - *John*

## Division 10 Model Railroad Data Base

Pete Birdsong and I would like to start a new feature for the Lantern. Each month we will present the basic information about the layout to be toured. The layout builder/owner will provide the information and Pete or I will try to get a few pictures.

The plan is to put this in the newsletter while building a data base of the layouts of Division 10 members. This information along with pictures and possibly a short history and/or biography would be available on our web site. This will allow new and prospective members as well as interested visitors to Central Kentucky an opportunity to see all that we have to offer.

Our first layout is **Mike Armstrong's** N & HO scale Tunnel Mountain Railway.

*-John*

### Mike Armstrong



### Tunnel Mountain Railway

*Name:* Tunnel Mountain Railway

*Size:* N Scale: 17' x 2' - HO Scale 10' x 12.5' square, 2' feet shelf around the room

*Period:* Steam/Diesel Transition

*Style:* Walk around double main, Crest remote throttles

*Benchwork:* Open grid, blue foam board

*Track:* Code 100 Atlas Flex track; Atlas turnouts, #6 & #4

*Radius:* 22"-24" minimum radius is the plan

*Scenery:* Plaster cloth and foam board, Woodland Scenics scenery materials and a few miscellaneous manufacturers trees.

*Comments:* The scenery is supposed to be western, mostly, and north western. The lines you will see using the Tunnel Mountain track are the Great Northern, the Northern Pacific, the Spokane, Portland and Seattle, and the CB&Q, i.e., the roads that made up the Burlington Northern. This is a small pike. The goal was to have the them of a brewery, a distributor and a barrel factory. It was designed to do some switching while a full train would run around the perimeter in HO. There is an N Scale line around the HO for forced perspective. The probability is high that this will be the last public showing. I have decided that I could have a really nice sized N Scale railroad without a duck under, as opposed to having an HO scale railroad with which I am dissatisfied. Hard decision when you consider the hours I have put in building it thus far. The backdrops were painted by me.

## Bring n' Brag Schedule for 2003

**Jan. - Houses and Farm Buildings**

**Feb. - Steam Locomotives**

**Mar. - Non-revenue (Including Cabooses and Maintenance of Way)**

**April - Stations: Passenger and Freight**

**May - Freight Cars**

**June - 'Anything Goes': All classifications**

**July - Favorite Trains**

**Aug. - On-line Structures (except stations)**

**Sept. - Diesel Locomotives**

**Oct. - Commercial Structures: Industrial, businesses, municipal, etc.**

**Nov. - Passenger Cars**

**Dec. - Open Loads: Flat Cars, Gondolas and Intermodal**

*-Ron Kercheval*





# AROUND THE BEND

| MON       | DAY   | EVENT                 | PLACE/TIME   | PROGRAM  | TOUR                             | CONTEST                        |
|-----------|-------|-----------------------|--|--|----------------------------------|--------------------------------|
| FEB       | 2     | MCR DIV 10            | Beaumont Library, Lexington, Sunday, 2:00 pm   | Layout design & track planning roundtable: Pat Gerstle, Franklin Miller and Fritz Dutro  | Mike Armstrong N, HO & G Scales  | Steam Locomotives              |
| FEB       | 14    | BGRRRC                | Meadowthorpe Community Center, Friday, 7:30 pm                                       | Wes Ross: Vintage 16mm Movies of classic railroading in the 50's and 60's  |                                  |                                |
| MAR       | 2     | MCR DIV 10            | Tates Creek Library, Lexington Sunday, 2:00 pm                                       | Mike Baskette -Freight car painting, decaling and weathering.  | Pat Gerstle Narrow Gauge S Scale | Non-Revenue Cars               |
| MAR       | 14    | BGRRRC                | Meadowthorpe Community Center, Friday, 7:30 pm                                       | Bob Larger: DCC control  |                                  |                                |
| MAR       | 21-23 | MCR                   | Railroad Prototype Modelers East Pittsburgh, PA, Holiday Inn at Exit 6, Pa. Turnpike | Contact Dick Flock, 724-850-8882 Email rflock@worldnet.att.net Clinics on prototype info                                       |                                  |                                |
| APR       | 6     | MCR DIV 10            | To Be Announced  | To Be Announced  | Mike Walters N Scale             | Passenger and Freight Stations |
| APR       | 11    | BGRRRC                | Meadowthorpe Community Center, Friday, 7:30 pm                                       | Bill Paulsell: Resin Casting   |                                  |                                |
| APR       | 24-27 | MCR DIV 7 Convention  | Springdale Best Western, Rt 4 and I-275, Cincinnati, OH                              | Contact Charlie Atkinson, atrain@juno.com, or Div website: <a href="http://www.cincy-div7.org/">http://www.cincy-div7.org/</a> |                                  |                                |
| MAY       | 4     | MCR DIV 10            | To Be Announced  | To Be Announced  | To Be Announced                  | Freight Cars                   |
| JUNE      | 1     | MCR DIV 10            | To Be Announced  | To Be Announced  | To Be Announced                  | 'Anything Goes'                |
| JULY      | 13-19 | NMRA Nat'l Convention | Toronto, Canada  | See Website for full details: <a href="http://www.ml2003.com/pages/home.html">http://www.ml2003.com/pages/home.html</a>        |                                  |                                |
| MAY 2004  | 13-16 | MCR Convention        | Four Points Sheraton, Cranberry, PA  | Contact Div 2 for more information   |                                  |                                |
| JULY 2004 | 4-11  | NMRA Nat'l Convention | Seattle, WA  | See Website for full details: <a href="http://www.nmra2004.org/">http://www.nmra2004.org/</a>                                  |                                  |                                |
| MAY 2005  | 12-15 | MCR Convention        | Comfort Inn, Austinburg, OH  | Contact: Matt Kross e-mail mkross@earthlink.net  |                                  |                                |
| JULY 2005 | TBD   | NMRA Nat'l Convention | TBD, Cincinnati  |  |                                  |                                |

**Next Meeting:**  
**Beaumont Library**  
**Lexington,**  
**Sunday, February 2,**  
**at 2:00 pm**



**Clinic:**  
**Layout Design & Track**  
**Planning Roundtable**

**Tour:**  
**Mike Armstrong**  
**N, HO & G Scales**

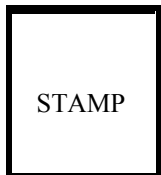
**Bring & Brag:**  
**Steam Locomotives**



---

# The Lantern

Published most months by Division 10  
Mid Central Region  
National Model Railroad Association  
143 Chenault Road,  
Lexington, KY 40502  
jgorman@earthling.net  
On-Line: [nmra-division10.railfan.net/](http://nmra-division10.railfan.net/)



**New Feature!**



**Model Railroad**  
**Data Base**

(See Inside)

---