



The Lantern



Volume 5 Issue 01

Division 10, Mid Central Region

January, 2003



**National
Model
Railroad
Association**

The *Lantern* is a monthly publication of Division 10, Mid Central Region, National Model Railroad Association. Opinions expressed herein are those of the authors and do not necessarily reflect those of Division 10, the Mid Central Region, the NMRA, or anyone else.

Mid-Central Region Officers

Trustee:

Michael C. Brestel
3208 Vittmer Avenue
Cincinnati, OH 45238
513-661-2141
mbrestel@eos.net

President:

Marty Vaughn
557 Brice Road
Reynoldsburg, OH 43066
614-860-9023
WmMVAughn@aol.com

Vice President:

Lou Dalton
411 Deerfield Drive
Cranberry Twp., PA 16066
724-776-9724
daltonlg@aol.com

Secretary:

Pete Birdsong
2308 The Woods Lane
Lexington, KY 40502
859 268 1462
rpete@insightbb.com

Treasurer:

Richard A. Flock
337 Elm Drive
Greensburg, PA 15601
724-850-8882
Rflock@bellatlantic.net

Division 10 Officers and Board

Superintendent:

Bill Robbins
4704 Sunny Point
Lexington, KY 40515
859-271-8839
bandbbears2@aol.com

Asst. Superintendent:

Fritz Dutro
306 Savannah Drive
Richmond, KY 40475
859-626-1876
fritzdutro@yahoo.com

Secretary:

John Gorman
143 Chenault Road
Lexington, KY 40502
859-269-3573
jgorman@earthling.net

Treasurer:

Fred Plymale
3463 Snaffle Road
Lexington, KY 40513
859-223-7270
f729@aol.com

Board of Directors:

Wendell Greer
212 Southpoint Drive
Lexington, KY 40515
859-272-8731
dewvalley@juno.com

Board of Directors:

Pete Birdsong
2308 The Woods Lane
Lexington, KY 40502
859 268 1462
rpete@insightbb.com

Board of Directors:

Mike Armstrong
4809 Agape Drive
Lexington, KY 40514
859-296-4746
pika@gte.net



Hand Laying Track Clinic in January

Pat Gerstle has found the hand laying of track to be a very rewarding process - an exercise that is both fun to do and which provides very realistic results.

Pat will begin with a discussion of why you should consider it and what the benefits are. He will give examples of the materials, jigs, and tools you need, followed by a demonstration of the entire process. Pat will cover surface preparation, the ties, the rail, turnouts, electrical considerations, forming curves, and spiking the rails.

Even if you don't ever plan to hand lay track, this clinic is important to all because of all the basics covered.

Message From The Superintendent

We want to thank our guest John Hughes for attending our December meeting. It was a pleasure to have you and we hope that you will come back again.

Our thanks to Fritz Dutro for an excellent program on scenery theory. You don't realize your limitations till you hear from an expert. Everyone can make trees but you need to know the theory of landscaping before you can build a realistic layout. Everyone keep your first Sunday of the month open as Fritz is going to have some more great programs next year.

We have more exciting opportunities for you members and guests. Ron Kercheval has his B&B program developed

(Continued on page 5)

NMRA Achievement Program Explained!

Do you have a layout? If you do "The Golden Spike Award" is for you.

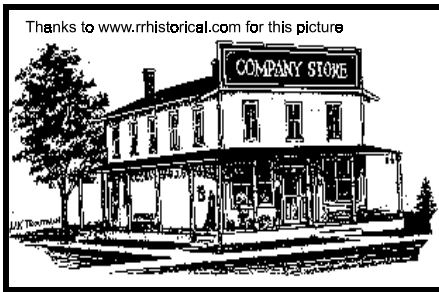
Last month I talked about the first step in the Achievement Program, which is the Golden Spike Award. I know you have been anxiously awaiting the details. If you have a layout with some scenery, and a couple trains you may qualify for this award and be started one your way to Master Modeler. The Golden Spike Award is divided into three areas, which are as follows:

Rolling Stock – If you have at least six pieces of rolling stock that you have detailed in some manner such as painting, or decaling, or weathering, or adding detail parts, displayed on your layout you meet this requirement.

Structures & Scenery – Build a layout of at least eight square feet. It does not

(Continued on page 5)

Contents	
1	Officer Listing Upcoming Clinic Superintendent's Message NMRA AP Explained
2	Company Store Committee Chairs Witless vs. Clueless
3	Support Your Hobby Shops Sustaining Members & Patrons
4	What the NMRA Means to Me Treasures Repot January's Meeting
5	Front Page Articles Continued Bring n' Brag article and 2003 Sched.
6&7	The Kingpin
8	Editor's Notes Bring n' Brag 2002 Winners
9	Around The Bend



“STUFF” & OPPORTUNITIES

Mike Armstrong occasionally knows of *members’ overstock* situations and other opportunities to acquire or dispose of “stuff.” Get in touch with him to find out what’s currently available. These liquidations, generally via a web auction, bear a 15 to 20% fee.

In addition, *The Lantern* is in a position to advertise your “overstock” items, for a fee of 10%.

Contact Mike Walter to arrange for an ad, or Mike Armstrong for liquidations.

Committee Chairs

Achievement Program	David Greer
Advertising	Mike Walter
Community Activities	Open
Company Store	Chris Cord
Contests	Ron Kercheval
Conventions & Shows	Fred Plymale
Editor & Webmaster	John Gorman
Estate Liquidations	Mike Armstrong
Member Aid	Wendell Greer
Membership	Wendell Greer
Photographer	Pete Birdsong
Programs	Fritz Dutro

Witless vs. Clueless

The Continuing Railroad Adventures of Rivets O’Reilly and Larry Loungecar



Created by ‘Railroad’ Pete Birdsong
Written by Mike Armstrong

Rivets: Boy, Larry, I tell ya, I’m glad to have Christmas come, but it is a lot of work.

Larry: Yeah, Rivets I know whatcha mean! Every year I put up the artificial tree and it has less and less branches on it. And it looked so good when we bought it 40 years ago.

Rivets: Ya could buy a new one!

Larry: Sure could, but now you can really see my Christmas layout under the tree! It looks great beneath that aluminum tree and the rotating spotlight. It isn’t so much work to put it together any more.

Rivets: I don’t mind the tree part, but my layout under the tree takes hours to put together. I have water falls, bridges, street lights, beer wagons, wild animals; just about anything you can think of, I have. It takes a lot of time to get them out of their original boxes, put ‘em all back after Christmas. Man oh man!

Larry: I can’t believe you do

things in such an old fashioned way, Rivets. I have come up with the perfect answer to that problem. Notice what I have here . . .

Rivets: Larry, are ya talkin’ about the grocery bag full of garbage bags?

Larry: I sure am, Rivets. These garbage bags are the answer to my Christmas tree “put up and take down woes.” I am not going to take my tree down any more. I am going to leave it right where it is in the corner of the living room. I have thrown all those boxes away. I am going to cut these bags, tape them together, and cover my tree and layout. Then I will put an easy chair in front of it. Next year, all I have to do is move the chair, take the bags away, plug in the tree and layout and I am ready to go!

Rivets: Ya know, Larry, you never cease to amaze me with the way your brain works.

Larry: Why, thank you, Rivets!

Rivets: (Sigh!)



**Special
Orders
Available**

- MTH & Lionel Complete Sets
- Track & accessories, Box Cars, T-Shirts
- Layaway available
- MC/VISA/Discover

209 Rosemont Garden
Lexington, KY 40503
(859) 278-8082
Toll free: 877 609-0695
FAX: (859) 873-6863

Summer Hours:
Mon - Fri.: 1:00 to 6:00
Saturday: 11:00 to 5:00
Sunday: Closed



**Dealer for brass at
20% off retail:
Overland Models
Hallmark
Key Imports**

**Garden Springs Shopping Center
Mon-Sat 10:00 - 9:00; Sun 1:00 - 7:00
820 Lane Allen Road Lexington, KY 40504
859 276 4240 1 888 797 3938**

**BOOKS
VIDEOS
MAGAZINES
ACCESSO-
RIES
COMPLETE
TRAIN SETS
SPECIAL
ORDERS
PERSONAL
SERVICE**

In Appreciation....

Many thanks to our Sustaining and Patron members for 2002. It is time to make your donations for 2003. (Sustaining members contribute \$10.00 per year, and Patrons \$20 or more.) We encourage all members to help support *The Lantern* and our website. A number next to a name indicates a second or subsequent donation.

2003 PATRONS

2003 SUSTAINING MEMBERS

Support Our Local Hobby Shops

Our advertisers are supporting us with their ads, so let's support them with our business! A strong retail network is vital to keeping the hobby visible to the public, and provides valuable help to newcomers. By our patronage of their stores, they are able to continue bringing more people into the hobby, and promoting our organization.....

win-win!!

What the NMRA Means to Me

The other night as I was leaving a session, I overheard a person say something to the effect that the "NMRA doesn't do anything for me or I don't get anything for my money."

I thought about that for awhile and my flippant thought was "a person usually gets out of an organization just about as much as what the person puts in."

Thinking a little more seriously about what I get out of the NMRA, every time I buy a piece of rolling stock or a turnout there has been some NMRA aspect involved in the design. The NMRA logo on a product means that the product conforms to the Specs as published in the NMRA.

I started modeling in the late 50's and by that time, there were NMRA standards that the hobby manufacturers were using. All the specifications for O and HO scales for turnouts and track were already established and published in the NMRA Bulletin (N scale wasn't around then). All the manufacturer's had to do to make these parts were to use the NMRA specs. Before then, one manufacturer's products were not always compatible with another's.

There is also the issue of couplers. When I arrived on the scene, the NMRA X2F coupler had already been adopted. While this coupler has had its share of criticism over the years, it still is being sold on much of the rolling stock today. It did have one advantage over all the others, it was standardized and all the various manufacturers' rolling stock was compatible.

To be sure, there were remnants of the old stuff around. Mantua had a loop coupler like no one else. It looked terrible but did couple the cars very well. So well, in fact that a string of cars could be hung on the Christmas tree like a circuit of lights. Most of the manufacturer's used some sort of a dummy coupler that didn't work very well and didn't couple with each other. Each builder's coupler was slightly dif-

Treasures Report

We have had no income in Sept, Oct. or November. Our current balance is \$3,877.37.

Anticipated expenses for the first quarter of 2003 will be higher than usual to cover a \$150.00 filing fee for our 501c3 tax status and estimated expenses for our first annual Lexington train show will be in the area of \$1,000.00.

We will start accepting annual donations from our Patrons or Sponsors in December for the 2003-year. Please be generous and send your checks made out to NMRA MCR DIV. 10 to Fred Plymale, 3463 Snaffle Rd. Lexington, KY 40513.

-Fred

ferent from the next. In fact, often couplers of the same brand didn't work with themselves.

Of course, we have all heard of the RP25 wheel flanges. The standard for this wasn't around when I started. I would often buy rolling stock with flanges so large that they wouldn't roll on Code 100 track that in itself is oversized for HO. More recently I believe the RP25 spec has been adopted for N scale.

One other area was independent control of trains. We know it today as DCC but before that it was commonly called carrier control. Astrac by GE was one of the first systems out and there were others such as CTC16, Keller and PFM. As you can see, there were some pretty big names out there with each system being incompatible with the others. Once one got hooked into a system there were no alternatives but to stay with the system. What was worse, one individual I know spent \$500 or \$600 to get started. A year later he went back for some technical support only to find out the manufacturer had gone out of business. Anyone knows that if one assigns 3 engineers on the design of a project, they will usually all come up with different designs. Each

January's Meeting

I hope all of you have had a Joyous holiday season. Now that we have all unwrapped our Christmas presents (lots of train stuff I am sure) its time to get back to some serious modeling efforts.

This month our focus at the January meeting will be a clinic on hand laying track presented by local talented modeler Pat Gerstle. Before you assume that this isn't a clinic for you, be advised that the techniques that Pat will demonstrate are applicable to obtaining good operations out of all track work including flex track and sectional track.

Afterwards we will be touring Alan Brocks' layout. Allen is modeling the Monon railroad in Indiana. Having seen Alan's layout once before I am

(Continued on page 5)

thinking that their design is the best. The same is true with the manufacturers. Often due to the NIH syndrome (Not Invented Here).

When DCC arrived on the scene, the NMRA SIG group coordinated a common effort for the necessary protocol to be used by all builders. That is the reason one can buy decoders from any manufacturer who subscribes to the standard protocol. I received (as many others did) early copies of the protocol asking for input.

There are other benefits to being an NMRA member. One can go to the National, Regional or even Division meetings and meet, talk to and see the best modeling by modelers in the hobby.

Another is the AP award activity. The list goes on. What do I get from the NMRA...lots.

I personally think that any serious modeler owes the NMRA a debt of gratitude.

But as I said when I started, the bottom line is "you get out about what you put in"

-Wendell Greer (Membership, Div. 10)

AP Explained (Continued from page 1)

have to be super detailed. However, it should be more than just a painted board with track on it. It needs to have at least five structures that you detailed in some manner, such as painting, weathering, kitbashing, etc. Buildings, bridges and trestles count as structures.

Engineering & Electrical – The layout needs to incorporate three types of trackage and be ballasted. Any kind of track is acceptable. The three types of trackage could be a turnout, a crossing, a change in elevation, or a super-elevated curve. Even three turnouts would qualify. Also required is the ability to operate two trains simultaneously. If you can have two locomotives on your layout and can electrically run one at a time or both independently you qualify. The last requirement is to have at least one operating electrical accessory. Anything that is wired to the “Accessories” terminal of your power pack, such as lights or a switch machine will qualify.

If your layout has these things then you are likely qualified to receive the Golden Spike Award. If you think you are qualified let me know.

For more details about the NMRA Achievement Program visit the NMRA web site at www.nmra.org.

-Dave Greer (AP chairman)

January Meeting (Continued from page 4)

looking forward to a return visit as it is a nicely sceniced and good running layout.

In the future we can expect clinics on track planning, more scenery construction, and a possible non-division layout tour (still in the planning stages). Anyone interested in giving a clinic should contact me either at the meeting or at home. I thank you on behalf of the officers for your attendance and continued support of Division 10 activities for the coming year.

-Fritz Dutro

Superintendent's Message (Cont'd from page 1)

for the year. I urge you to participate. (Who knows, someone might dethrone Fred)

David Greer would like to see more of you participate in the achievement program. He'll be glad to help you get started. Just give him a call.

Make Walter is in the process of developing our raffle program. More on that later.

Chris Cord will be exploring the possibility of helping Boy Scouts earn a merit badge on Model Railroading.

I am pleased to announce our first train show under our chairman Howard Coleman. It will be held at the Knights of Columbus in Lexington, date to be announced later. We will need the help of all members in areas such as running the show (take tickets, etc), help run the layouts, man our NMRA table, rent a table for yourself, or just be there and be a host for Div 10.

2003 is going to be a great year for Div 10. I am looking forward to seeing all of you participating.

-Bill

Bring n' Brag December 1, 2002

A good meeting deserves a good contest and we had an excellent turnout. December's category was Open Loads: flat cars and gondolas.

We had five modeling entries: Fritz Dutro with a small HO scale steam loco on a flat car, Pete Birdsong with an N scale C&O GP40 body on a flat car, Bill Robbins with several HO scale flat cars and loads from different manufacturers, Fred Plymale with an HO scale flat with nicely rusted wheelsets, and Howard Coleman with an N scale flat with track. First place went to Fritz by one vote, Fred took second, and Pete came in third. Congratulations all!

There were four photo entries: Bill Pausell with a prototype Amtrak car, Pete Birdsong with an N scale passenger train at a station, Fritz Dutro with an interesting steel mill scene with a cut of hoppers, and Pat Gerstle with an incredibly detailed photo of one of his Sn3 locos on a trestle. Fritz took first again, with Pete second and Pat third. Again, congratulations!

-Ron Kercheval

Bring n' Brag Schedule for 2003

Jan. - Houses and Farm Buildings

Feb. - Steam Locomotives

Mar. - Non-revenue (Including Cabooses and Maintenance of Way)

April - Stations: Passenger and Freight

May - Freight Cars

June - 'Anything Goes': All classifications

July - Favorite Trains

Aug. - On-line Structures (except stations)

Sept. - Diesel Locomotives

Oct. - Commercial Structures: Industrial, businesses, municipal, etc.

Nov. - Passenger Cars

Dec. - Open Loads: Flat Cars, Gondolas and Intermodal

-Ron Kercheval



The Kingpin

Mid Central Region
National Model
Railroad Association

Fourth Quarter, 2002

President's Message

by Marty Vaughn

This column starts on a sad note. Bob Stetson MMR died shortly after I submitted my last column. Those of you who attended our last Region Convention probably remember Bob as he was presented with his MMR, number 314, at the banquet. Bob had been in poor health for the last few years due to a fall that injured his back. Bob's superb HO standard and narrow gauge layout literally filled his basement and he was just as passionate about garden railroading and earned merit awards in both scales. I knew how hard Bob wanted to earn his MMR and how hard he worked for it. I think I was almost as happy to be part of the presentation of his award as Bob was to receive it. You will be missed Bob.

On the good news side, it gives me great pleasure to announce that the newest MMR in the MCR. Number 317, has been earned by Bama Harman from Division 8 in Louisville, KY. Again if you were at the last convention you saw some of Bama's work in the contest room. I was in Louisville for a Division meeting in September and I can tell you that Bama was excited to finish his certificates. Bama is the Division 8 AP Chairman and his enthusiasm is infectious. I expect there will be a number of MMRs coming out of Division 8 in the near future! Congratulations Bama!

For those of you reading this, who were members of the disbanded Division 9, we are looking to reconstitute the Division. Jim Heilman of Ripley WVA has volunteered and been appointed the Division 9 Superintendent. As I write this we are sorting the membership roster to identify the zip code boundaries of the Division. When this is finished Jim will be sending out a letter contacting you about a start up meeting to be held in the Division. I plan to be at that meeting and hope you will be too.

Region elections are coming up and all the officer positions are up for election. Dick Briggs MMR, the MCR nominating chairman and his committee have been at work identifying candidates. If you are interested in running for Region office you can contact Dick or submit a petition to place your name on the ballot. Dick's instruction from me was to ensure that there were no uncontested offices.

For those of you that don't know, Mike Brestel under went heart surgery shortly after his return from Ft. Lauderdale. I have spoken with Mike and he is doing fine, but as with any heart surgery it takes some time to recover. Hang in there Mike, our thoughts are with you.

If you have tried emailing me recently and got no response it is because my PC has been down for over a month, as I type this (in my office at work), with a series of one darn thing after another. I do normally answer all my email so if you don't get a response call or send snail mail.

If you have a problem or just want to talk model railroading give a call, write, or email me.

The KingPin is a quarterly publication of the Mid Central Region of the National Model Railroad Association. Opinions expressed herein are the authors and do not necessarily reflect the opinion of the MC R, the NMRA or anyone else.

President

Marty Vaughn
557 Brice Road
Reynoldsburg, OH 43068
614-860-9023
wmmvaughn@aol.com

Vice President

Louie G. Dalton Jr.
411 Deerfield Dr.
Cranberry Twp, PA 16066
724-776-9724
daltonlg@aol.com

Secretary

Pete Birdsong
2038 The Woods Lane
Lexington, KY 40502
859-268-1462
rrpete@insightbb.com

Treasurer

Richard H. Flock
337 Elm Dr.
Greensburg, PA 15601
724-850-8882
rflock@worldnet.att.net

Region Trustee

Michael C. Brestel
3208 Vittmer Ave.
Cincinnati, OH 45238
513-661-2141
mbrestel@eos.net

Division Superintendents & Committee Chairmen are on the Region Website (www.midcentral-region-nmra.org)

The Kingpin (Continued from page 6)

Trustee's Message

by Mike Brestel

Hello all—

I hope that everyone's summer was spent more productively than mine. A few weeks after I got home from the National Convention, I was lucky enough to undergo my second heart valve replacement in four years. It seems the valve they replaced four years ago was not working properly, so they had to replace it again. Needless to say, my activities have been curtailed while I'm recovering.

You may recall that in the last KingPin I gave a summary of the new Long Range Plan. At the end I asked anyone with questions or comments to let me know. I guess I explained it really well, because I heard from only two members after the summary appeared. I guess everyone else understood it all and agreed with everything I wrote! Seriously, it's still not too late to let me hear what you think.

While he did not talk to me personally, I found out by reading a superintendent's report that he is displeased that the trustees do not represent the regions from which they come. This is a requirement of Ohio corporate law, and there's nothing that I, he, or any of us can do about it. According to Ohio state law, trustees must represent the interests of the corporation, not the area they come from. Usually it's possible to do both, but it would be illegal for me to vote for the interests of the MCR if they did not coincide with the interests of the national NMRA.

The same superintendent felt that reducing the number of trustees from 17, in a 1:1 relationship to the number of regions, is "very, very bad." I disagree with this assessment. Right now each NMRA is able to vote for only one trustee, and that trustee, by law, is not allowed to represent the people who elected him. In the future each region member will be able to vote for several trustees, rather than just one. While those trustees will still be legally bound to represent the National NMRA, the fact that we each get to vote for more than one trustee means that there will be more than one trustee willing to listen to what each member has to say.

At the same time, with a reduction in total trustees, the meetings will run more efficiently and there will be time to address issues and business that now gets ignored due to lack of time. Since currently a trustee is by law NOT a representative of the region from which he comes, I believe there will be little change in how trustees (to be called directors) relate to most regions. And with a reduction in the number of trustees, I hope that we can improve the overall quality of trustee candidates and the production of the board.

Remember, I'm waiting to hear from you on these and any other issues about which you care to contact me. As always, my addresses are in the front of the KingPin. Since I'm off work right now, my phone number is (513) 481-0185. It's fine to call me from 9 am to 9 pm. Take care, and I hope to see you at the MCR Spring Convention in Cincinnati!

The WebMaster

by Ivan Baugh

The first material has been posted on the Mid-Central Region web site for the Boy Scout Railroading Merit Badge. Please take a look at it, try it, and give me feedback, please. The first requirement reads: "Name the scale and track gauge for four railroad gauges...". Material has been posted to help young men learn about the scales and gauges.

Thanks for your insights.

MCR AP Report

by Frank Koch

Golden Spike Awards: Bob Ampulski

Master Model Railroader: Michael Harmon MMR #317

02 Master Builder - Cars

05 Model Railroad Engineer - Civil

10 Model Railroad Author

03 Master Builder - Structures

06 Model Railroad Engineer - Electrical

Region Elections

President Vaughn has appointed Dick Briggs, Fred Plymale and Gary Sole as the 2004-2005 Election Nominating Committee. We will be electing the Region President, Vice-President, Secretary and Treasurer for the 2004-2005 Fiscal Years beginning at the spring convention, 2003. Anyone interested in running for one of these offices, contact Dick Briggs at div6super@aol.com or calling (614) 277-0314.

Newsletter Deadline

Deadline for the first quarter newsletter is **January 5, 2003**. Please send your articles and announcements to KingPin Editor, 6322 Mid Pines Court, Grove City, OH 43123-9505 or e-mail to logandj@earthlink.net.

Editor's Notes

Issue number 3 and still counting. As you can see I got a lot of help from others for this issue. Please keep it coming.

Let me know if you have any suggestions for the newsletter or the web site. Also any articles you want to write or if you have any information to include in the "Notes From Around" column I need them. Send your items to: jgorman@earthling.net

Mike Walter tells me he has sold year long newsletter ads to both Berkshire and Bluegrass hobby shops. He is sorry to say that he was unable to get any other shops to participate. We all need to remember to let the shops that advertise in our newsletter know that we appreciate it and in some way it helped you come there to make your purchase.

When making a purchase in one of the hobby shops that does not advertise in the newsletter, let them know that you are a member of the NMRA and you would appreciate their participation in the support of the Lantern as much as they appreciate your patronage of their store.

The December meeting was great. We had a very informative clinic on scenery planning by Fritz Dutro. It was a very well presented clinic packed with important information that anyone should consider when planning new layouts or changes in an existing layout.

The layout tour of David Greer's N-scale DOO Line was a treat not to be missed. Knowing his dad, Wendell Greer, David's layout was everything I expected and much more. David's son was also showing his layout. David and family, we thank you for your hospitality.

I hope to see you all at the January meeting or in the near future.

-John

2002 Bring & Brag Final Scores

MODELS

High to Low or Tie	Dec	YTD
Fred Plymale (1st)	4	44
Pete Birdsong (2nd)	3	31
Fritz Dutro (3rd)	5	23.5
John Gorman	0	23
Bob Lawson	0	8
Lou Jaquith	0	7
Howard Coleman	2	6
Bill Robbins	2	6
Wendell Greer	0	4.5
Mike Armstrong	0	4
Mike Barrett	0	2
John Bowling	0	2
Pat Gerstle	0	2
Bill Paulsell	0	2
Mike Walters	0	2

PHOTOS

High to Low or Tie	Dec	YTD
Pete Birdsong (1st)	4	33.5
Fritz Dutro (2nd)	5	27
John Gorman (3rd)	0	21.5
Bill Paulsell	2	10
Bill Robbins	0	8
Pat Gerstle	3	3
Fred Plymale	0	2

COLEMAN'S COLLECTION

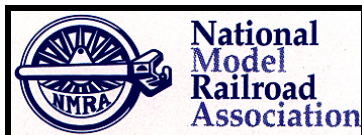
(Favorite Railroad Websites from Howard Coleman)

Try this site and see what railroading can be for you. Remember that this is where you are the boss no matter who says!

Have a good time surfing?

<http://www.thortrains.net/index.htm>

Howard



AROUND THE BEND

MON	DAY	EVENT	PLACE/TIME	PROGRAM	TOUR	CONTEST
JAN	5	MCR DIV 10	Tates Creek Library, Lexington, Sunday, 2:00 pm	Pat Gerstle: Hand Laying Track	Alan Brock	Houses & Farm Buildings
JAN	10	BGRRC	Meadowthorpe Community Center, Friday, 7:30 pm	Richard Rink: Eastern Railfan Adventures		
FEB	2	MCR DIV 10	Beaumont Library, Lexington, Sunday, 2:00 pm	Layout design & track planning roundtable: Pat Gerstle, Franklin Miller and Fritz Dutro	Mike Armstrong	Steam Locomotives
FEB	14	BGRRC	Meadowthorpe Community Center, Friday, 7:30 pm	Wes Ross: Vintage 16mm Movies of classic railroading in the 50's and 60's		
MAR	2	MCR DIV 10	To Be Announced	To Be Announced	To Be Announced	Non-Revenue Cars
MAR	14	BGRRC	Meadowthorpe Community Center, Friday, 7:30 pm	Bob Larger: DCC control		
MAR	21-23	MCR	Railroad Prototype Modelers East Pittsburgh, PA, Holiday Inn at Exit 6, Pa. Turnpike	Contact Dick Flock, 724-850-8882 Email rflock@worldnet.att.net Clinics on prototype info		
APR	6	MCR DIV 10	To Be Announced	To Be Announced	To Be Announced	Passenger and Freight Stations
APR	11	BGRRC	Meadowthorpe Community Center, Friday, 7:30 pm	Bill Paulsell: Resin Casting		
APR	24-27	MCR DIV 7 Convention	Springdale Best Western, Rt 4 and I-275, Cincinnati, OH	Contact Charlie Atkinson, atrain@juno.com, or Div website: http://www.cincy-div7.org/		
MAY	4	MCR DIV 10	To Be Announced	To Be Announced	To Be Announced	Freight Cars
JUNE	1	MCR DIV 10	To Be Announced	To Be Announced	To Be Announced	'Anything Goes'
JULY	13-19	NMRA Nat'l Convention	Toronto, Canada	See Website for full details: http://www.ml2003.com/pages/home.html		
MAY 2004	13-16	MCR Convention	Four Points Sheraton, Cranberry, PA	Contact Div 2 for more information		
JULY 2004	4-11	NMRA Nat'l Convention	Seattle, WA	See Website for full details: http://www.nmra2004.org/		
MAY 2005	12-15	MCR Convention	Comfort Inn, Austinburg, OH	Contact: Matt Kross e-mail mkross@earthlink.net		
JULY 2005	TBD	NMRA Nat'l Convention	TBD, Cincinnati			

**Next Meeting:
Tates Creek Library
Lexington,
Sunday, January 5,
at 2:00 pm**

**Clinic:
Pat Gerstle on
Hand Laying Track**

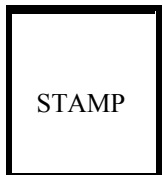
**Tour:
Alan Brock's
Monon Railroad**

**Bring & Brag:
Houses and
Farm Buildings**



The Lantern

Published most months by Division 10
Mid Central Region
National Model Railroad Association
143 Chenault Road,
Lexington, KY 40502
jgorman@earthling.net
On-Line: nmra-division10.railfan.net/



**2002
Bring & Brag
Winners
Announced!**

(See Inside)
