



THE LANTERN



SEPTEMBER 2017

VOLUME 19, ISSUE 9

Superintendent's Report

The Saturday outing at Grosser's on the 5th of August, was fantastic. Not only is there more track but more of Grosser's friends brought 7 1/2" gauge engines and cars. There were a total of four trains running. And Renee had finished several more buildings on the O gauge layout. A good time was had by all. Photographs are below right in column 2. We didn't have the turnout I had hoped for but I did get to meet two Life Members of the Division that have not previously attended any meetings in Lexington.

The regular Fall schedule will begin Sunday, September 3rd at Beaumont Branch of the Lexington Public Library. Unless otherwise noted, we will be alternating between the Beaumont and Tates Creek Branches – see the Calendar for specifics.

I'm beginning to think about Fall projects now that Summer is pretty well over. At least for me, most of the things in the model rail job jar are items to work on as the Fall season comes upon us. I've got several cleanup items to do on the layout and a bunch of new ideas (yeah, really, doesn't everyone?). Plans definitely include upgrading buildings, stringing power lines on the poles, finishing up some of the gaps in the scenery, and other miscellaneous bits and pieces. Not to mention getting all the engine decoders synchronized – at least those that are already installed. Well, by synchronized, I mean to get the maximum speed set, the sound balanced, etc., and to get the decoders on the shelf into those locomotives that have so far escaped an upgrade. One project is to replace the decoders in those DCC engines with analog Vmax. Nothing like a switcher that goes 60mph!! Maybe this year I'll get that animated water spout installed at Midway, or maybe the remote uncoupling ramps – those of you who operate on my layout know which ones I'm talking about – on the

Mine spur. These don't even include the neat building kits that have been languishing on the shelf.

I've been talking to Bruce about clinic and tour plans for the upcoming year. He has some great ideas and I hope to see some more 'how to' clinics. There are a lot of modeling areas we haven't touched on or re-visited.

I guess the bottom line is to re-energize for the 2017-2018 modeling year. And get ready for the next MCR convention in Cincinnati next Spring. Hope to see you there.

— Bob Belt



In the above photo, Ray Grosser is running the train using a hand-held throttle. In the photo below Robin Grider is running with manual controls. Members Don Burris is behind Ray, and Mike Rehorn and Larry Smith are behind Robin.





For the NMRA MC Region officers link to www.midcentral-region-nmra.org/bod2.html

The Lantern is a monthly (except July) publication of Division 10, Mid Central Region (MCR), National Model Railroad Association. All opinions expressed herein are those of the authors, and do not necessarily reflect those of Division 10, the MCR, the NMRA, or anyone else.

In Recognition...

Many thanks to folks listed in the column below. They have given their support for our club. We encourage all NMRA members to help with financial support to The Lantern and our website and the Division 10 activities. **Send your monetary contribution to our Treasurer.**

To be listed here your contribution needs to be at least \$20 in cash, or material valued at \$50, or a total of 20 hours time within the last year. Division 10 receives NO monetary support from the NMRA or the MidCentral Region. Div.10 is recognized by the US government as a 501c3 corporation and your cash or material donations may be tax deductible.

Report materials or time to Stew Winstandley. To the right of each contributing member's name is the month of his or her latest contribution. Whenever one makes a contribution of money, material, or time, his or her date will be updated, and for new contributors, their name will be added. Anyone not making a contribution within 12 months will be dropped .

Chester J Myers	5/2017
Raymond Cox	4/2017
Randy Coffman	2/2017
Paul Evans	12/16
David Battin	10/16
Lou Jaquith	"
Franklin Miller	"
Tom Krill	"
Don Burris	9/2016
Clyde David Burberry	"
Bill Marshall	"
Harold Weinberg	"
John Bowling	"
	"

Mark Hunt— paper and copying of printed materials
Fred Plymale—Slide Projector
John Gorman
Alan Bourne—Treasurer's materials

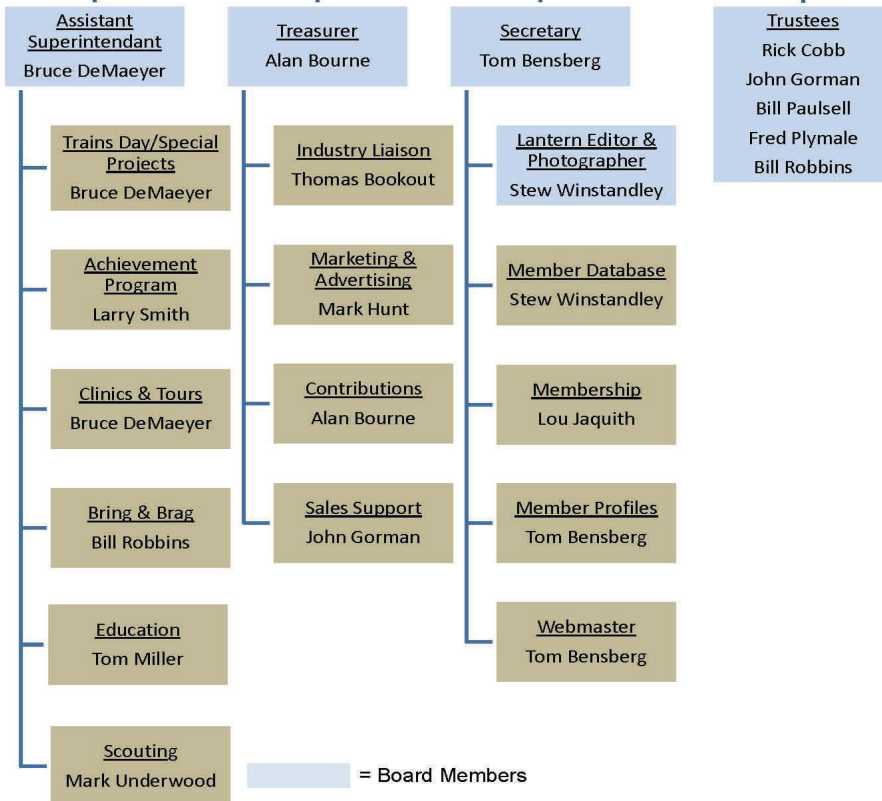
Organizational Chart

Division 10
Mid-Central Region
National Model Railroad Association

<http://nmramcrdiv10.yolasite.com/>
3/4/2017



Superintendent
Bob Belt



Division 10 Treasurer's Report:

July 1, 2017—\$12,139.20; Expenses: \$0.009;
Deposits: \$0.00; Balance: July 31, 2017—\$12,139.20

Give or send your contribution to:

Alan Bourne, 438 Queensway Dr.. Lexington, KY 40502



Bruce Arbo's unofficial T-TRAK report from Kato at the NMRA National Convention

I was part of the Kato booth display with a few of my T-TRAK modules...I spent my entire time at the show as part of their booth. Kato USA has realized how T-TRAK can really help encourage new model railroaders to get started, and, since their Unitrack is proprietary, they see the obvious benefit to a relationship with T-TRAK. So they are going to be trying to feature a small T-TRAK display, at their booth (in lieu of their previous circle of Unitrack on a table), at most of the shows that they will be attending.

I did not attend the convention at all, but I heard the same from my friends that did...not the best organized convention...this is entirely on the NMRA National organization as they rely on local members to organize rather than having a core of National members who are National convention 'Ramrods'...missing clinics that were already pre-paid, wrong times listed for tours (many missed the buses because of this), etc...

The National Train Show, on the other hand, was much better. Attendance was 11,472, I believe...not the largest, but I believe the venue (Orlando, where a local train show is low on a list of activities for families during the summer), coupled with the issues with the local NMRA organizers, may have added to a non-record breaking attendance...both the larger T-TRAK layout, and the small one at the KATO booth were VERY well received! PLENTY of exposure!...Cody Grivno, from Model Railroader, assisted in the judging of modules for various awards, and I was video interviewed by Cody and David Popp on my T-TRAK modules set up at the Kato booth. And David also stated that the Model Railroading Magazine staff are about to revisit more T-TRAK modules in a near future segment.

So, it was a great time showcasing T-TRAK and we introduced LOTS of new folks to the concept, which they loved for most of the reasons we already know.

I will say this about standards...we encountered some initial frustration during setup, when we discovered that some of the modules were not wired to the T-TRAK international standard of B-W-W-B...(blue Kato wire to the 'outside', white Kato wire to the 'inside')...this prevented us from easily using a common bus wire to attach as many power leads as we would have liked (it's always best to have as many power drops as possible to ensure great electrical connection throughout the layout, throughout the show).

Also, the response we received from major manufacturers in the industry was fantastic! Obviously Kato, but also Woodland Scenics (Woodland), Blair Line, Showcase Miniatures, Digitrax (they donated their ! VERY FIRST new Wifi interface module off of the production line to the T-TRAK layout to use and showcase-Terry Nathan and Joshua Murrach had it installed and operating in minutes!).

Editor's note: Division 10 MCR now has six modules that have been displayed as a T-TRAK layout at our meetings and at the "Trains Day at the Library" in June (see last month's *Lantern*, page 1). T-TRAK is a modular model railroad system based on a few standards

for module size, track placement, track interface, and electrical connections. The minimal standards allow for a wide range of flexibility in design yet still maintain interoperability with all modules built per the standards. The popularity of T-TRAK is worldwide allowing for modules from all over the world to connect together. T-TRAK modules are dioramas with sectional track, specifically Kato Unitrack, that snap together to create layouts from a simple circle to large complex layouts.

Photos of the Division 10 layout have been shown in previous issues of *The Lantern*. To the left is a module built by Rick Cobb and Mike Cummins. This is an example of the diorama concept of T-TRAK, following the T-TRAK standards. Part of the description text above came from ttrak.org.



THE LANTERN
NEWSLETTER FOR NMRA MCR DIVISION 10

210 BRANNON RD.
NICHOLASVILLE, KY 40356-9711
WWW.DIV10-MCR-NMRA.ORG



SEPT. 3, 1:30

BEAUMONT BRANCH LIBRARY
3080 FIELDSTONE WAY

BRING AND BRAG

BRIDGE

MEETING AGENDA

BUILDING SERIOUS MOUNTAIN
SCENERY, BRUCE DEMAEYER

TOUR

ROGER CLAPHAM, 2212
MANGROVE DR, 40513

AROUND THE BEND

MON.	DAY	HOST	PLACE	EVENT / PROGRAM	TOURS	BRING & BRAG
Sept.	3	Div. 10	Beaumont Library	Mountain Scenery, Bruce DeMaeyer	Roger Clapham	Bridge
Oct.	1	Div. 10	Tates Creek Library	EduTrain, Intro to Ops, Tom Miller	None	Caboose / Cabin car
Oct.	14	Div. 7	Lakota West High, 8940 Union Center Ave, West Chester, OH 45069	Model Train and Trade Show, 11—5	Show layouts	
Nov.	5	Div. 10	Beaumont Library	Introduction to Gauge 1, Maelor Davies	Bruce DeMaeyer	Anything
Dec.	3	Div. 10				

Message from Bill Robbins: “I would like to buy your unneeded **HO** train stuff; locomotives, cars, structures, etc.” My phone number is 859-230-7342 or email me at 1bear1lion@gmail.com