



THE LANTERN



JUNE 2017

VOLUME 19, ISSUE 6

Superintendent's Report

June 4th we will be at the Beaumont Branch of the Lexington Public Library again and the clinic will be 'Cars AP'. **Bill Paulsell MMR**, **Larry Smith MMR** and I will be doing a combination panel/round table. We will have a Power Point show plus Merit Award models and documentation on display.

No meeting in July but plan on a Saturday outing at Grosser's the 5th of August. The regular Fall schedule will begin again in September.

Now - a report from the 2017 MCR Convention:

Clinics – A total of 51 with several repeats. There were some really good ones and **Bruce DeMaeyer's** signaling attracted a crowd – congrats Bruce! The one I liked was Scratch Building in Brass by Steve Zapytowski – a virtual rebuild of a United Shay. And I thought I was a stickler for detail. Anyhow, I believe the clinics are one of the highlights of the regional convention and wasn't disappointed in the quality of those I attended.

Contest – There were 34 models vs 42 in Columbus, 46 photos, and 4 Arts & Crafts. In the models – most were N (a real bear to judge – didn't bring my Optivisor). I and the other 14 judges noted that some models had a real shortage of descriptions on the entry forms. However, the show stopper was a fantastic structure by Sam Swanson



(left) followed very closely by an engine house - but shame on me – I didn't note the modeler's name during the awards – and he worked on my

judging team! Due to other circumstances, the only Division 10 model entry was **Larry Smith's** Honorable



Mention (left). FYI – I screwed up the lettering on my McKen car

and didn't enter it. I'll take it to Cincinnati in 2018 – which should be a lot more competitive. Another aside – we have several modelers in our Division who could have placed well in the contest but were unable to attend. There is a provision for proxy entries which we should take advantage of in the future.

Operations – Bruce reported that Russ Weis's session on Thursday evening was fun and I heard some good feedback on several other layouts. There were a total of 6 at Division 8 member's layouts.

Tours – heard several good reports about how well these went. There was a lot of table discussion at the banquet about these and how well liked they were.

Banquet – as banquet's go – fair. The usual presentation of awards, including Sam Swanson's Best in Show structure pictured in column 1.

Super's get together – this is a regular Friday evening event which included a couple NMRA national officers. This is the general business meeting and all the MCR divisions report on activities since the Fall meeting. This includes committee reports and the usual old and new business. We had a lot of discussion on membership/recruiting/retention. The Region has the same problems as other organizations and no one has a magic wand to offer – although there were several ideas presented that sounded interesting. I'll pass these on to our





For the NMRA MC Region officers link to www.midcentral-region-nmra.org/bod2.html

The Lantern is a monthly (except July) publication of Division 10, Mid Central Region (MCR), National Model Railroad Association. All opinions expressed herein are those of the authors, and do not necessarily reflect those of Division 10, the MCR, the NMRA, or anyone else.

In Recognition...

Many thanks to folks listed in the column below. They have given their support for our club. We encourage all NMRA members to help with financial support to *The Lantern* and our website and the Division 10 activities. **Send your monetary contribution to our Treasurer.**

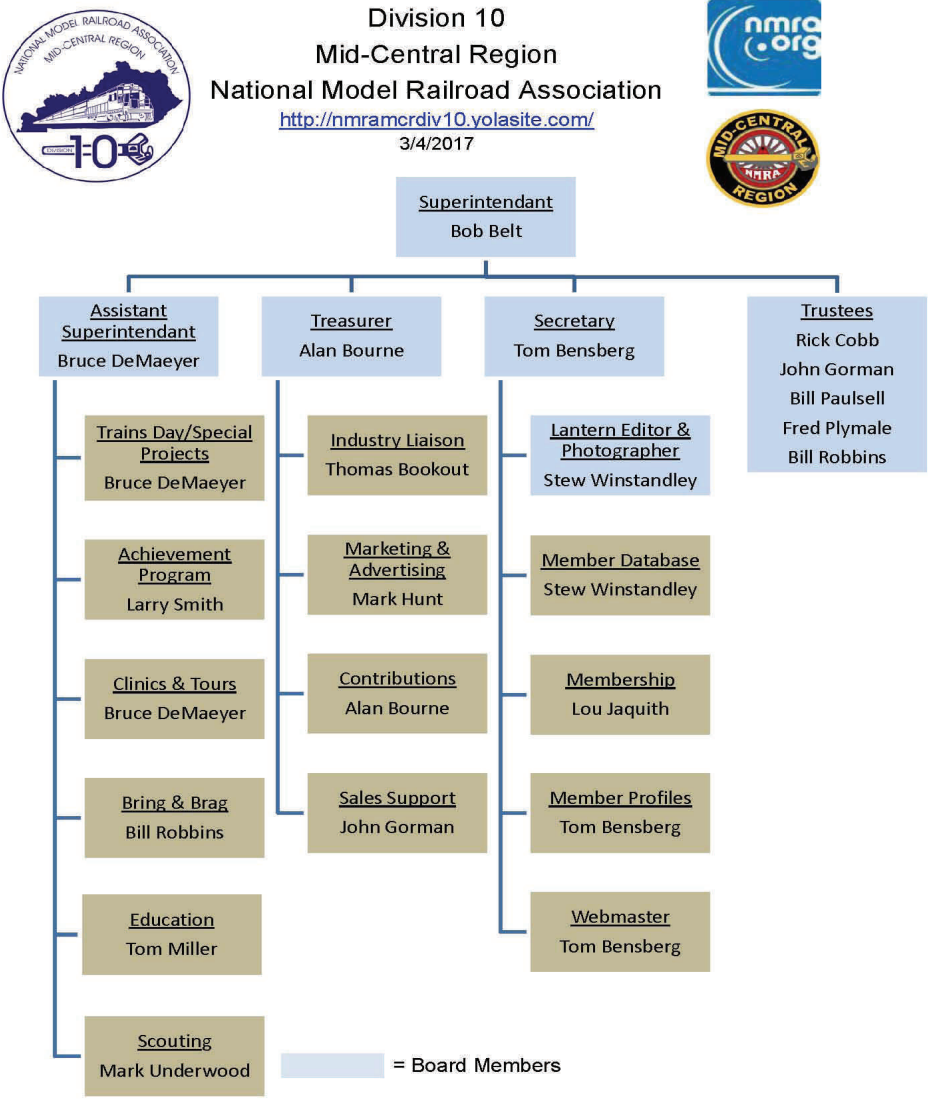
To be listed here your contribution needs to be at least \$20 in cash, or material valued at \$50, or a total of 20 hours time within the last year. Division 10 receives NO monetary support from the NMRA or the MidCentral Region. Div.10 is recognized by the US government as a 501c3 corporation and your cash or material donations may be tax deductible.

Report materials or time to Stew Winstandley. To the right of each contributing member's name is the month of his or her latest contribution. Whenever one makes a contribution of money, material, or time, his or her date will be updated, and for new contributors, their name will be added. Anyone not making a contribution within 12 months will be dropped .

Raymond Cox	4/2017
Randy Coffman	2/2017
Paul Evans	12/16
David Battin	10/16
Lou Jaquith	"
Franklin Miller	"
Tom Krill	"
Don Burris	9/2016
Clyde David Burberry	"
Bill Marshall	"
Harold Weinberg	"
John Bowling	"
John Stokes	4/2016
Bill Robbins	"
Chester Myers	"
Clay Faulconer	"
Mark Hunt— paper and copying of printed materials	
Fred Plymaale—Slide Projector	
John Gorman	

Organizational Chart

Division 10
Mid-Central Region
National Model Railroad Association
<http://nmramcrdiv10.yolasite.com/>
3/4/2017



Division 10 Treasurer's Report:

April 1, 2017—\$12,234.29; Expenses: Lantern \$19.60;
Deposits: Sales \$10.00, Contributions \$25.00; Balance:
April 30, 2017—\$12,249.69

Give or send your contribution to:

Alan Bourne, 438 Queensway Dr.. Lexington, KY 40502

Photo to the right: Our MCR Education Chairman Tom Miller touring Switzerland's 1:1 scale railroads. Tom will present an EduTrain clinic at our October meeting.



Report, continued from page 1, column 2

membership chairman. Another topic was the upcoming 2018 convention in Cincinnati and the 2019 convention in Division 1 near Youngstown, Ohio. One suggestion was to leave each convention website up for a couple years for historical access. Another item of note was the plaques from the estate of Lone Eagle Pyne – a native American and the 1st MCR President - which included many regional and national awards and recognitions. These were brought and displayed by the Division 1 Superintendent, Jim Dipaola.

Sunday morning Brunch – this is also a regular and is presided over by the incoming MCR President – in this case our friend Bob Weinheimer, MMR, from Division 9. We had several of the same discussion topics as above but in a much more informal setting.

Self-Guided Layout Tours – another area of which I didn't take advantage. There were 16 available for Sunday after the convention. These were set up in groups depending on direction from Louisville. Most of them were HO scale, but N, O & G scale were included. A well prepared packet of maps was included for each convention registered attendee. More on the tours on bottom of column 2.

What I haven't mentioned were all the other activities and events that for the most part I missed but were well attended. Division 8 did put together a really good convention. It is difficult to recognize and honor all the volunteers that make a regional convention happen – successfully. Another item of special note – the non-rail clinics and tours. The ladies of Division 8 not only did a great job in the Hospitality Suite but were very involved in the non-rail activities. One final thing of note was that the convention got pretty good service by the Galt House considering there was another Convention there at the same time with 1400 attendees!

To round up, one of the real rewards to me as an NMRA member is attending a regional convention and the opportunity to renew old friendships and meet new modelers – many of whom have skill levels far beyond mine.

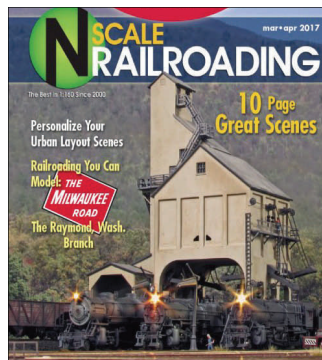
— Bob Belt

Editor's Notes:

Fernwood Lumber Co. I missed Division 10's May meeting, but on that Sunday I visited our past member Pete Birdsong at his home in Danville, Calif. Not having a basement, his current On3 narrow gauge layout is on a shelf down the side of his garage. Much of this layout came from the larger layout in Lexington.



Convention layout tour. Chris Broughton's N scale layout was one on tour. His coaling tower is on the cover (left below), and he has an article, both in the March/April 2017 issue of *N Scale Railroading* magazine. The magazine cover was photographed with a backdrop. My photograph (right below) of the other side of the tower is on the layout without a backdrop.



— Stew Winstandley

THE LANTERN
NEWSLETTER FOR NMRA MCR DIVISION 10

210 BRANNON RD.
NICHOLASVILLE, KY 40356-9711
WWW.DIV10-MCR-NMRA.ORG



JUNE 4, 1:30

BEAUMONT BRANCH LIBRARY

BRING AND BRAG

DIESEL LOCOMOTIVES

MEETING AGENDA

CARS AP DISCUSSION

TOUR

LARRY SMITH, 1041 FOREST
HILL DR, LAWRENCEBURG
40342

AROUND THE BEND

MON.	DAY	HOST	PLACE	EVENT / PROGRAM	TOURS	BRING & BRAG
June	4	Div. 10	Beaumont Branch	Cars AP; Bill Paulsell, Larry Smith , & Bob Belt	Larry Smith	Diesel Locomotives
June	10	Div. 10	Eastside Branch Library, 3000 Blake James Dr., 40509	Trains Day		
July-Aug.	30-6	NMRA	Rosen Plaza Hotel, Orlando, Fla.	Orange Blossom Special National Convention	go to website address shown below	
Aug.	5 (Sat.)	Div. 10	Renee & Ray Grosser's, near Eubank, Ky.		Grosser's O scale and 1:8 scale	
Sept.	3	Div. 10		Mountain Terrain Scenery, Bruce DeMaeyer	Roger Clapham	Bridges

NMRA 2017 National Convention, Orlando, Fla., July 30—August 6, 2017 www.nmra2017orlando.org