



# THE LANTERN



APRIL 2017

VOLUME 19, ISSUE 4

## Superintendent's Report

With sadness, I was informed of the passing of **Gary Burdette, MMR**, Division 9, on March 15<sup>th</sup>. I had the privilege of knowing him, if only briefly. Great modeler and he will be missed.

Update on the June Trains Day at the Library – **Bruce DeMaeyer** has added a 'Docent' sub-committee to be chaired by **Lou Jaquith**. The purpose is to have several members available to circulate and answer questions. The committee met at the Eastside Branch on March 1<sup>st</sup> to preview the meeting room and facilities.

Another note is that the Northside Branch of the Lexington Public Library has a 3D printer with an orientation course for users. I don't have any more details.

The March clinic by **Stew Winstandley** was on 'Modeling a Prototype Using 3D Printing' along with Stew discussing and presenting his Florida East Coast LNG tender model. He included a slide about the dictionary definition of a 'tender' which definition clearly needs an update – only reference is to steam locomotives. It is pretty obvious that the FEC LNG car is a 'tender' in all senses of the term. Stew had lots of details on the 3D printing process and his presentation prompted a lot of questions and discussion.

The April 2<sup>nd</sup> clinic at the Beaumont Branch Library will be 'Route & Speed Signaling' by **Bruce DeMaeyer** and because of length, there will be no tour. The Bring and Brag category is Online Structures. Again note that you are welcome to bring any model to share.

For May 7th, we will be back at Tates Creek Branch for 'DCC Consisting' by **Mark Underwood**. The B&B category is Diesel Locomotives, the tour will be at **Harold Weinberg's**.

We are planning a silent auction to be held periodically starting with a trial at the April 2<sup>nd</sup> meeting. This is an

opportunity to clean out the shelves of unused/forgotten/orphaned stuff we all seem to collect. All proceeds are to be donated to the Division. Seller and Buyer responsibilities and a downloadable Bidder sheet .pdf will eventually be posted on the Division website. The plan is to do this from 1 to 1:30 PM on a separate table before the beginning of the meeting. Bidder sheet handouts will be available at the door for Sellers to set a reserve price and minimum 'bumps'.

The MCR Convention in Louisville is rapidly approaching in May. For those of you planning on entering the contest, please plan on bringing your model to the May 7th Division meeting for a member preview. This is in addition to the regular Bring and Brag for the meeting.

— *Bob Belt*

Beginning with the meeting on April 2, 2017, the Division is offering the members an opportunity to participate in a **Silent Auction** of goods related to model railroading.

The Silent Auction will take place at the meeting location from 1:05 to 1:30pm. The auction will end at 1:30. The necessary forms are on the Division 10 website. Library opens at 1:00.

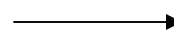
### Seller responsibilities

The seller must be a member of the Division.

A seller wishing to donate any material item to the division can bring that item and the associated paperwork to the meeting. Bring a couple of pencils to use in the auction. The results of the sale will be fully donated to the division.

The seller will establish the opening bid amount and the minimum increase for each successive bid. The seller will be responsible for putting the item for sale on the auction table as well as making sure the bidding requirements are being followed.

At the close of the bidding at 1:30, the seller shall collect the bid sheet from the table. The seller will be required to collect the money from the auction winner and then turn that money as a donation to the Division Treasurer, who will provide the seller with a donation document. A buyer wishing to bid on the item in auction will mark the Bid Sheet with the amount of the bid and the bidder's name.





For the NMRA MC Region officers link to [www.midcentral-region-nmra.org/bod2.html](http://www.midcentral-region-nmra.org/bod2.html)

*The Lantern* is a monthly (except July) publication of Division 10, Mid Central Region (MCR), National Model Railroad Association. All opinions expressed herein are those of the authors, and do not necessarily reflect those of Division 10, the MCR, the NMRA, or anyone else.

## In Recognition...

Many thanks to folks listed in the column below. They have given their support for our club. We encourage all NMRA members to help with financial support to *The Lantern* and our website and the Division 10 activities. **Send your monetary contribution to our Treasurer.**

To be listed here your contribution needs to be at least \$20 in cash, or material valued at \$50, or a total of 20 hours time within the last year. Division 10 receives NO monetary support from the NMRA or the MidCentral Region. Div.10 is recognized by the US government as a 501c3 corporation and your cash or material donations may be tax deductible.

Report materials or time to Stew Winsteadley. To the right of each contributing member's name is the month of his or her latest contribution. Whenever one makes a contribution of money, material, or time, his or her date will be updated, and for new contributors, their name will be added. Anyone not making a contribution within 12 months will be dropped .

Randy Coffman	2/2017
Paul Evans	12/16
David Battin	10/16
Lou Jaquith	"
Franklin Miller	"
Tom Krill	"
Don Burris	9/2016
Clyde David Burberry	"
Bill Marshall	"
Harold Weinberg	"
John Bowling	"
John Stokes	4/2016
Bill Robbins	"
Chester Myers	"
Clay Faulconer	"
Mark Hunt— paper and copying of printed materials	
Fred Plymaale—Slide Projector	
John Gorman	

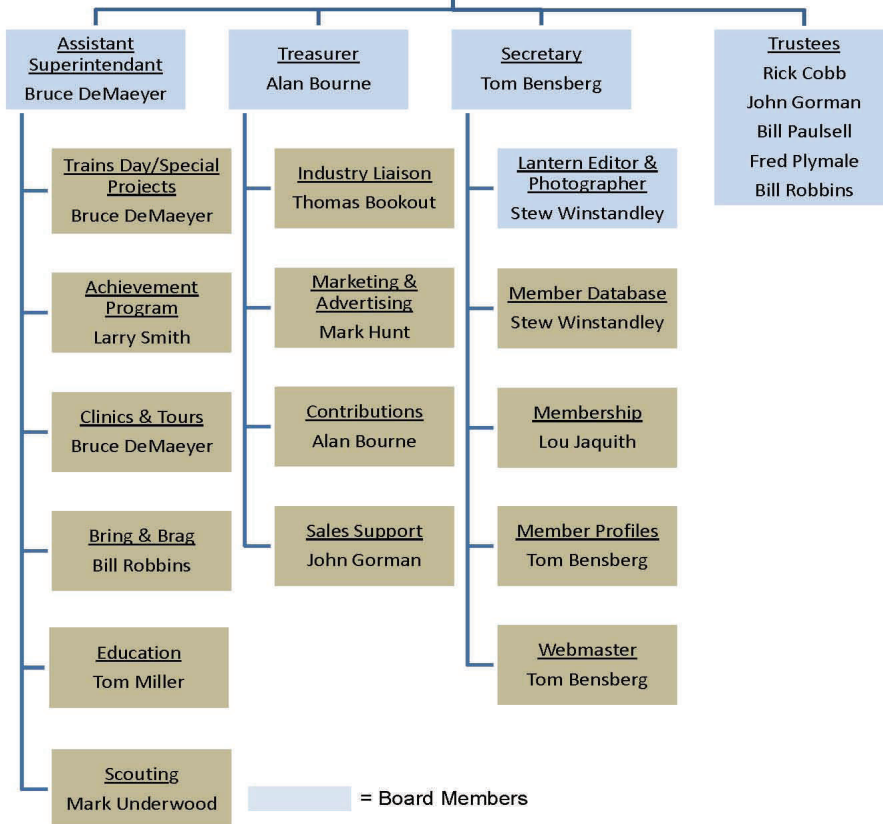
### Organizational Chart

Division 10  
Mid-Central Region  
National Model Railroad Association

<http://nmramcrdiv10.yolasite.com/>  
3/4/2017



**Superintendent**  
Bob Belt



### Division 10 Treasurer's Report:

Feb. 1, 2017—\$12,221.05;  
Expenses: Lantern \$41.16; Deposits:  
Contribution \$50.00 Balance Feb. 28,  
2017—\$12,229.89

Give or send your contribution to:

Alan Bourne, 438 Queensway Dr..  
Lexington, KY 40502

*Continued from page 1*

### Buyer Responsibilities

A buyer wishing to bid on the item in auction will mark the Bid Sheet with the amount of the bid and the name of the bidder. At 1:30, the bidding will close and the buyer with the highest bid will win the auction. The parties will transact the exchange of the material for money, and the material then belongs to the Buyer.

### Division Responsibilities

The Division will run this silent auction for the members, the auctions will be held periodically, likely once per quarter. The Division will be responsible for proving a donation letter to the Member/Seller.

— Bruce DeMaeyer

## Editor's Narrative followed by Clinic News

On the bottom of page 3 in the March issue of *The Lantern* were photos of my almost completed HO scale RJ Corman Railpower locomotive. I have since finished it. I altered an Atlas NRE genset to create a not so prototypical Railpower genset loco. Both NRE and Railpower, and other companies, have built gensets. A genset is a railway locomotive using multiple engine-generators per vehicle for traction power.

Atlas Model Railroad Company marketed a model of an NRE genset, and Microscale sold a decal set for the NRE genset,



but the decals were for RJ Corman Railpower. So I have an HO scale locomotive that looks like it was built by Railpower. I installed a DCC decoder into the model's 8 pin connector. Since I'm normally an N scaler, I was invited to run my genset on a friend's HO scale layout. The photo to the left shows my red locomotive on his layout. The layout has a number of Norfolk Southern heritage locomotives from both MTH and Broadway Limited.

I have experienced locomotive model sound before, but this was the first time I've heard a model with cab chatter

between the engineer and the conductor. The NS Southern 8099 shown above also produces simulated diesel exhaust. I've seen steam locomotive model steam and smoke from the stack, but this was a first for me to see diesel fumes from a model.

If you have the latest issue of *Model Railroader Magazine*, you've seen the article by Lance Mindheim titled "Future of Model Railroading." I think we're all concerned about the future of our hobby, since the average age of modelers is increasing. Of many points that Lance made about the future, a couple were about sound and power. He mentioned that battery powered locomotives with a hand held controller would eliminate the wiring for track power. A battery in the locomotives would replace the DCC "command bus" wiring, but we'd still have LCC controlling the functions on the layout not related to locomotive control. The NMRA says LCC would require a different pair of wires ([http://www.nmra.org/sites/default/files/standards/lcc\\_faqs\\_handout.pdf](http://www.nmra.org/sites/default/files/standards/lcc_faqs_handout.pdf)). Could battery powered locomotives free up wiring for bi-directional LCC?

During the April 2nd meeting, Bruce DeMaeyer will present his delayed clinic on Route and Speed Signaling. Route Signaling is used for interlocking and Speed Signaling is used between interlocking sections. He will end the clinic by explaining how he is implementing signaling on his N scale western themed layout.

The clinic will also be presented at the Louisville MCR convention in May. Because of its length, there will be no layout tour following this meeting. Instead, Bruce will host a layout open house the evening of April 25, the fourth Tuesday of the month. The signal photo to the right was taken on Larry Smith's HO layout.



**THE LANTERN**  
NEWSLETTER FOR NMRA MCR DIVISION 10

210 BRANNON RD.  
NICHOLASVILLE, KY 40356-9711  
WWW.DIV10-MCR-NMRA.ORG



*APRIL 2, 1 OR 1:30*

BEAUMONT BRANCH LIBRARY

*BRING AND BRAG*

ONLINE RR STRUCTURES

*MEETING AGENDA*

BRUCE DEMAEYER, ROUTE AND  
SPEED SIGNALING

*TOUR*

NONE, SEE APRIL 25

*SILENT AUCTION*

1 PM, SEE COLUMN 2, PAGE 1

**AROUND THE BEND**

MON.	DAY	HOST	PLACE	EVENT / PROGRAM	TOURS	BRING & BRAG
April	1	Div. 8	Moose Lodge 5, 4615 Fegenbush Ln, Louisville	Train Show and Sale	Operating Layouts	
April	2	Div. 10	Beaumont Branch Library	Route & Speed Signaling, Bruce DeMaeyer	April 25, see next line	Online Structures
April	25	Div. 10		Evening layout tour	Bruce DeMaeyer's, 1120 Kidds Mill Rd., Woodford County 40383	
May	7	Div. 10	Tates Creek Branch	DCC Consisting, Mark Underwood	Harold Weinberg	Diesel Locomotives and MCR Convention Entries
May	18-21	Div. 8	Galt House, Louisville	MCR 2017 Convention	go to website address shown below	

MCR 2017 Pan American Convention, Louisville at the Galt House, May 18th—21st.

<http://div8-mcr-nmra.org/site/2017PanAmerican/>

NMRA 2017 National Convention, Orlando, Fla., July 30—August 6, 2017 [www.nmra2017orlando.org](http://www.nmra2017orlando.org)