



THE LANTERN



FEBRUARY 2017

VOLUME 19, ISSUE 2

Superintendent's Report

Welcome new member **Maelor Davies** – and thanks to all who helped welcome him at the January meeting.

Also in our January meeting, our Division 10 AP Chairman, **Larry K. Smith, MMR**, presented another NMRA Achievement award. This time it was for another AP Volunteer – me, and thanks to everyone who helped me get there. The main point here is to encourage you to get your paperwork in. Many of you have met the qualifications for one or more awards and those of us who have awards can help you with the paperwork. I know Larry has corresponded with Frank Koch, our MCR AP Committee Chair, about a number of great questions that have come up. To quote from the NMRA Education/Achievement Program web page (which has a lot better writers than I am):

“In simple terms, the Achievement Program (AP) is a travel guide, to help you on your journey through the world of model railroading. The AP also provides incentive to learn and master the many crafts and skills necessary in the hobby of model railroading. With the completion of each category, you will be issued a certificate acknowledging your achievement.

The AP requirements are a set of standards, but they can also serve as a set of guideposts for those who are new, near-new, and not-so-new to the hobby. Not because they lead to some sort of official pat-on-the-back, but because they are a source of ideas for projects that can help us learn to become better modelers.”

I urge everyone to take a look at the information on the NMRA pages – the detail available is remarkable and there are many links to help our modeling (nmra.org).

There are a couple of other thoughts to cover this month.

Our first time use of the video at the January meeting seemed to be reasonably successful. We got several really good suggestions and will see if we can work those in to future clinics. This is an opportunity for everyone to get an up close view of the item being presented in a clinic. The idea of working behind the table also helps people in the back of the room hear what the presenter is saying. We can use our audio system if necessary, but my impression was that everyone could hear OK. Not too sure about the laser pointer, but that's another item to figure out. With the big screen in the center, it seems that having the presenter off to the side doesn't detract too much from the presentation. For future clinics, please let **Bruce DeMaeyer** know if you would like to use the video system so we can make it available. Our next challenge will be to incorporate the combination of video with a PowerPoint presentation.

Member profiles – most of the ones on the Division 10 website are pretty old – from 2010 and before. I'd like to ask everyone to update their profile and if you haven't done one yet, please get yours to **Tom Bensberg** so he can add it to the web site. Note that these profiles are on the private part of the Division 10 website so you need the login and password to access the Membership page. We cannot post any of these on the public access by law. These profiles are the best way to get to know who's who in the division, what layouts/scales/interests they have, etc. Contact Tom Bensberg for access if you haven't had or have forgotten the login and password.

—Bob Belt

PS – I just got a note from Steve Kaplan, MCR President, about the 2017 RPM-East Prototype Modeler Meet. The meeting will be in Greensburg, Penn. on March 24 & 25. I'll have info at the February Div. 10 meeting.



For the NMRA MC Region officers link to www.midcentral-region-nmra.org/bod2.html

The Lantern is a monthly (except July) publication of Division 10, Mid Central Region (MCR), National Model Railroad Association. All opinions expressed herein are those of the authors, and do not necessarily reflect those of Division 10, the MCR, the NMRA, or anyone else.

In Recognition...

Many thanks to folks listed in the column below. They have given their support for our club. We encourage all NMRA members to help with financial support to *The Lantern* and our website and the Division 10 activities. **Send your monetary contribution to our Treasurer.**

To be listed here your contribution needs to be at least \$20 in cash, or material valued at \$50, or a total of 20 hours time within the last year. Division 10 receives NO monetary support from the NMRA or the MidCentral Region. Div.10 is recognized by the US government as a 501c3 corporation and your cash or material donations may be tax deductible.

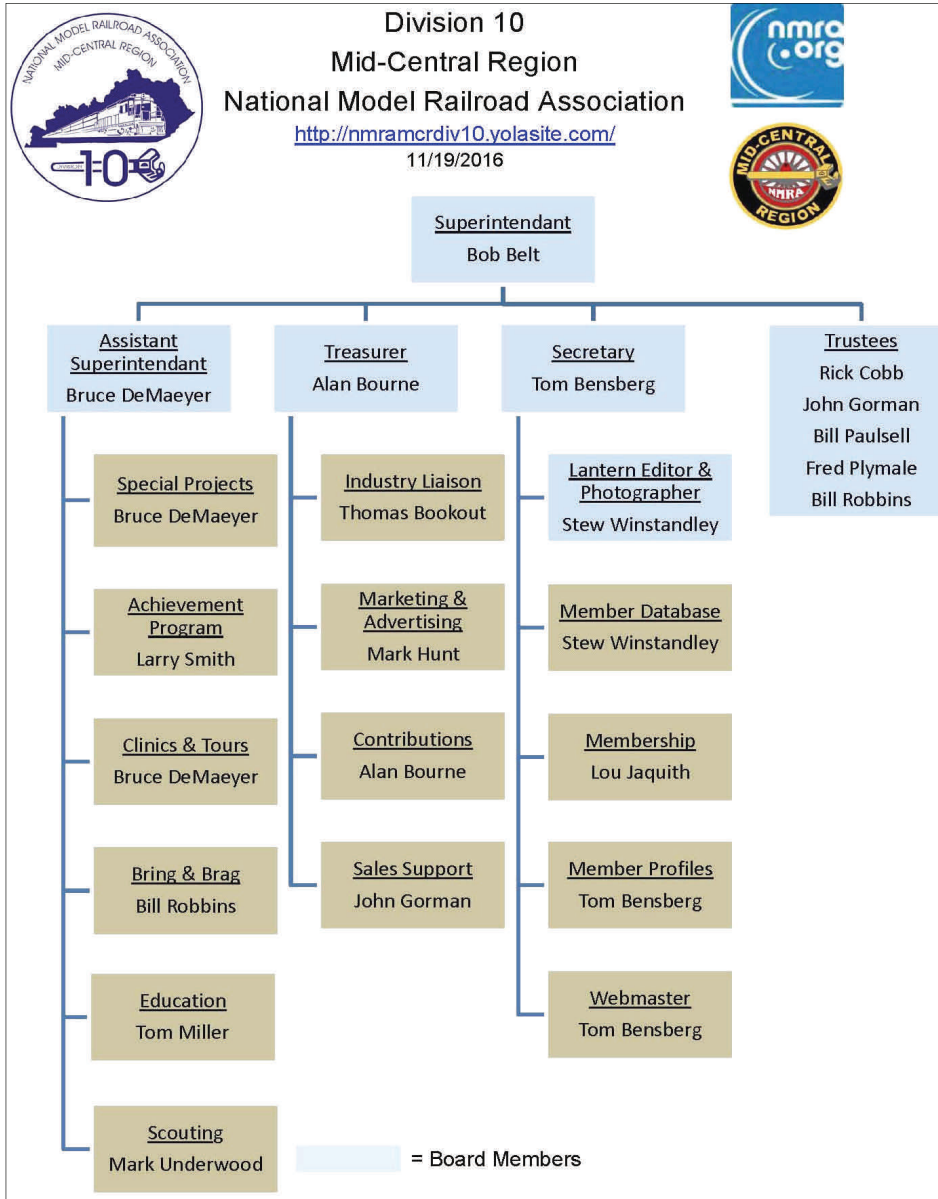
Report materials or time to Stew Winstandley. To the right of each contributing member's name is the month of his or her latest contribution. Whenever one makes a contribution of money, material, or time, his or her date will be updated, and for new contributors, their name will be added. Anyone not making a contribution within 12 months will be dropped .

Paul Evans	12/16
David Battin	10/16
Lou Jaquith	"
Franklin Miller	"
Tom Krill	"
Don Burris	9/2016
Clyde David Burberry	"
Bill Marshall	"
Harold Weinberg	"
John Bowling	"
John Stokes	4/2016
Bill Robbins	"
Chester Myers	"
Clay Faulconer	"
Raymond Cox	2/2016
Mark Hunt— paper and copying of printed materials	

Member Profile



Lou Jaquith

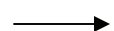


Division 10 Treasurer's Report:

Dec. 1, 2016—**\$12,223.55**;
Expenses: Lantern \$34.65, PayPal \$.85;
Deposits: Contributions: \$25.00, Sales: \$8.00;
Balance Dec. 31, 2016—**\$12,221.05**

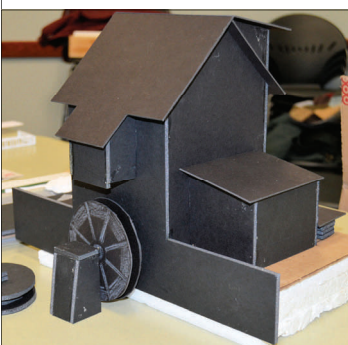
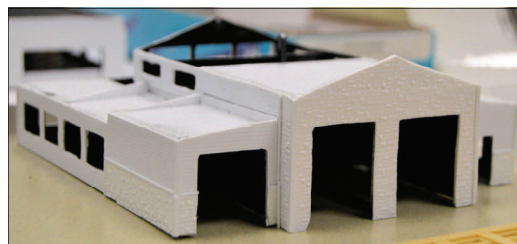
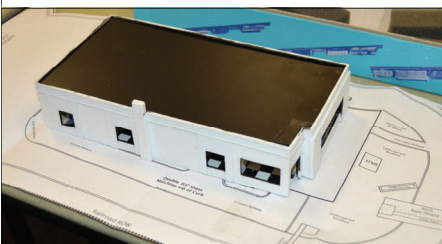
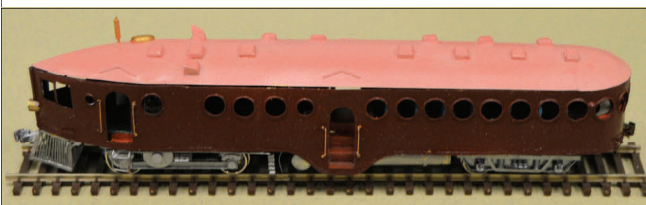
Give or send your contribution to: Alan Bourne, 438 Queensway Dr.. Lexington, KY 40502

I have loved trains since my earliest memories. My Dad was a Mechanical Officer at the Paducah Shops of the Illinois Central. My first train was a Marx wind-up, then in 1948, a used Lionel pre-war passenger set I had to share with my brothers. I discovered HO in 1953, and have been a train modeler since then. I am a modeler of 50's railroading, as you might imagine. The IC ran steam until 1960 out of Paducah. I model the Kentucky Division as if it was a wholly owned subsidiary of the IC, having started out as the Elizabethtown and Paducah, then the P&E. P&L came when it was extended to Louisville. So



my IC background, I developed a color scheme and logo based on IC practice while I was in the Navy 1967-71. After discharge, I began building and painting models. I had custom decals made in 1975. I began my present layout in 1982. In early 1986, I heard IC was spinning off the Kentucky Division to two businessmen in Western Ky. On a whim, I wrote to one of them suggesting my road name and color scheme and logo. To my utter surprise, he called me that week and invited me to meet with him and the new railroad's President in Paducah. They had selected the name Corydon, Grand Rivers, and Tiline for the line, but upon application for CGT reporting marks, found the Canada Grain Terminal already had those. My letter came as they were thinking of a new name. They liked what I had, and asked what I wanted for it. I said if I could continue to use it, and catch a ride or two, they could have it. We shook on it, and they said "you just saved us \$20,000 dollars in design fees!" In the past 30 years, I've done over 350 display models for them and VMV Shops, and am constantly being supplied with hats, jackets, sweatshirts, coffee cups, calendars, etc. Because of my 42 plus years in Dentistry, including over 30 operating my own dental lab, and working on the constant demand for models, my layout made slow progress until I retired in 2004. I am now making headway on setting up operations. My selected time period is Sept. 1958, IC ran steam until 1960 on this line, where they, as owner, naturally have trackage rights. I have modeled several scenes on the line, and model the middle portion where they had several tunnels, between Dawson Springs on the west, and Muldraugh Hill on the East The layout is point to point, with a hidden connection to allow continuous running for layout visits and test running. I have staging loops hidden below at each end, but I am rethinking this as I am getting older and not as agile as I once was. Scenery is well along, about 75% complete. Several backdrops need to be printed and hung, and my puffball forests are growing nicely! Come and see my layout after the meeting on Feb. 5th. —Lou
The 2011 photograph at the top of the profile is of Lou on the platform of the Paducah & Louisville's business car in Midway, Ky.

January Meeting notes... The scheduled clinic for the January meeting was to be by Bruce DeMaeyer on his layout's signaling system. Along with the clinic was a display of models that our members may enter for judging at the May MCR convention in Louisville. The discussion and presentation of the models took up enough time that Bruce's clinic was postponed until the April meeting. A tour at Tom Bensberg's N scale layout followed. Below are photos of the work-in-progress models.



First row above, left to right: Bob Belt's brass McKeen motor car, Lou Jaquith's P&L diesel and 4-6-4 steam locomotives.

Second row left to right: Bruce DeMaeyer's McDonald's, his fire station, and Larry Smith's yard office.

Bottom far left: Brian Jones' Grist Mill. Center: Tom Krill's 1902 passenger car. Great work. — Editor

THE LANTERN
NEWSLETTER FOR NMRA MCR DIVISION 10

210 BRANNON RD.
NICHOLASVILLE, KY 40356-9711
WWW.DIV10-MCR-NMRA.ORG



FEBRUARY 5, 1:30

BEAUMONT BRANCH LIBRARY

BRING AND BRAG

ANY STEAM MODEL

MEETING AGENDA

JOE HOLBROOK, PRINCIPLES OF
STEAM ENERGY

TOUR

LOU JAQUITH—HO SCALE P&L,
352 GREENBRIAR RD, 40503

AROUND THE BEND

MON.	DAY	HOST	PLACE	EVENT / PROGRAM	TOURS	BRING & BRAG
Feb.	5	Div. 10	Beaumont Branch Library	Steam, Joe Holbrook	Lou Jaquith—HO scale P&L	Any model powered by steam
March	5	Div. 10	Tates Creek Branch Library	Modeling a prototype, including 3D printing, Stew Winstandley	Bruce DeMaeyer—Modern N scale	Flat or well cars with loads
April	1	Div. 8	Moose Lodge 5, 4615 Fegenbush Ln, Louisville	Train Show and Sale	Operating Layouts	
April	2	Div. 10	Beaumont Branch Library	Route Signaling, Bruce DeMaeyer	Larry Smith—Modern HO scale	
May	7	Div. 10	Tates Creek Branch		Harold Weinberg	

MCR 2017 Pan American Convention, Louisville at the Galt House, May 18th—21st.

<http://div8-mcr-nmra.org/site/2017PanAmerican/>

NMRA 2017 National Convention, Orlando, Fla., July 30—August 6, 2017 www.nmra2017orlando.org