



# THE LANTERN



DECEMBER 2016

VOLUME 18, ISSUE 12

## Superintendent's Report

With the cooler weather (HA! Note the hard freeze!) upon us, now is the opportunity to start working on the to-do list for our models. I know my list(s) have been growing over the summer. There are all kinds of improvements and new ideas to try out. Is there a pesky turnout on your layout? I've got at least one that I'm considering changing to a larger number so the longer wheelbase locomotives don't hang up – one consolidation in particular. How about scenery? Is it all 'finished'? What about sprucing up some of the foliage or ground cover around buildings? And speaking of buildings, I have several 'to-be' buildings that have been just sitting there as mockups or inexpensive plastic. Now is a good time to start and or upgrade. Bill Paulsell mentioned a while back that one of his objectives was to replace all with scratch-built.

Another one of my projects in work is to animate a water spout. John Gorman has helped me with the Arduino programming for a servo to drive the spout tower. Now the time has come to assemble the spout and get it installed on the layout. Speaking of animation, are there any scenes on your layout that could be spruced up with motion?

Scenes – Fred Plymale is a master at creating mini-scenes. Is there a blank spot where you could put a building? How about activity around the building? One of my favorites on Fred's layout is the woman hanging clothes on a wash line with a basket at her feet.

Another master at mini-scenes is John Bowling. How about the paint crew on the bridge? And with

variations of paint on the bridge. Bob Ferguson does great mini-scenes on removable panels – which allows him to change whole sections and themes. His are in N-scale and are another example of the fine work our members are capable of – and are examples for each of us to achieve more.

How about operation? I mentioned my pesky turnout – but there are many more possibilities. Have you tried varying the schedule so you can have opposing meets? How about a passing track and a 'saw-by'? Another fond memory was reading and re-reading the 'Art of Model Railroading' articles in Model Railroader by Frank Ellison. The creation of a story line is a neat way to give life to your model railroading.

With all that, I wish everyone a Merry Christmas and great modeling for the new year!

— Bob Belt



Pictured above is the Gorman Electric Supply on John Bowling's HO scale L&N layout. Photo of Bob Ferguson's N scale Gorman Lumber & Building Materials is on pg. 3.



For the NMRA MC Region officers link to [www.midcentral-region-nmra.org/bod2.html](http://www.midcentral-region-nmra.org/bod2.html)

*The Lantern* is a monthly (except July) publication of Division 10, Mid Central Region (MCR), National Model Railroad Association. All opinions expressed herein are those of the authors, and do not necessarily reflect those of Division 10, the MCR, the NMRA, or anyone else.

## In Recognition...

Many thanks to folks listed in the column below. They have given their support for our club. We encourage all NMRA members to help with financial support to *The Lantern* and our website and the Division 10 activities. **Send your monetary contribution to our Treasurer.**

To be listed here your contribution needs to be at least \$20 in cash, or material valued at \$50, or a total of 20 hours time within the last year. Division 10 receives NO monetary support from the NMRA or the MidCentral Region. Div.10 is recognized by the US government as a 501c3 corporation and your cash or material donations may be tax deductible.

Report materials or time to Stew Winstandley. To the right of each contributing member's name is the month of his or her latest contribution. Whenever one makes a contribution of money, material, or time, his or her date will be updated, and for new contributors, their name will be added. Anyone not making a contribution within 12 months will be dropped .

David Battin	10/15
Lou Jaquith	"
Franklin Miller	"
Tom Krill	"
Don Burris	9/2016
Clyde David Burberry	"
Bill Marshall	"
Harold Weinberg	"
John Bowling	"
John Stokes	4/2016
Bill Robbins	"
Chester Myers	"
Clay Faulconer	"
Raymond Cox	2/2016
Rick Cobb	12/15
Mark Hunt— paper and copying of printed materials	

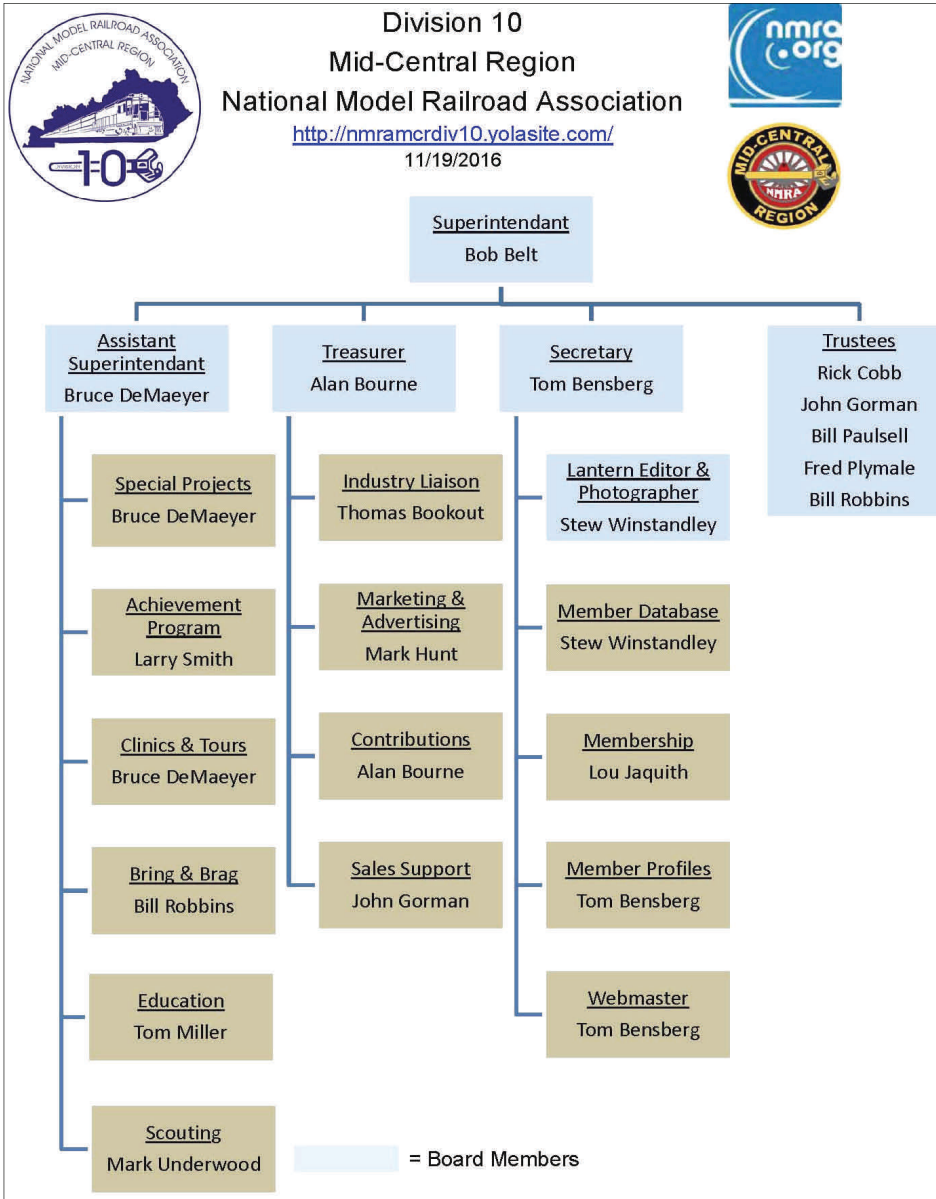
### Member Profile

#### Alan Bourne



Retired from the USAF (Financial Management and Administration) and an Air Force support contractor (cost estimator and analyst for acquisition of military satellite communications terminals). Began my journey in model railroading with the stereotypical Lionel oval under the tree at age 6. Extensive experience as an armchair modeler. Now building an HO scale point-to point shelf layout featuring the B&O but otherwise free-lanced, with all track hand-laid.

Editor's note: How about more information on Alan's shelf layout.



### Division 10 Treasurer's Report:

Oct. 1, 2016—\$12,364.67;  
 Expenses: Lantern \$62.51, Laptop PC \$221.99; Deposits: Contributions: \$165.00  
 Balance Oct. 31, 2016—\$12,245.17

Give or send your contribution to: Alan Bourne, 438 Queensway Dr.. Lexington, KY 40502

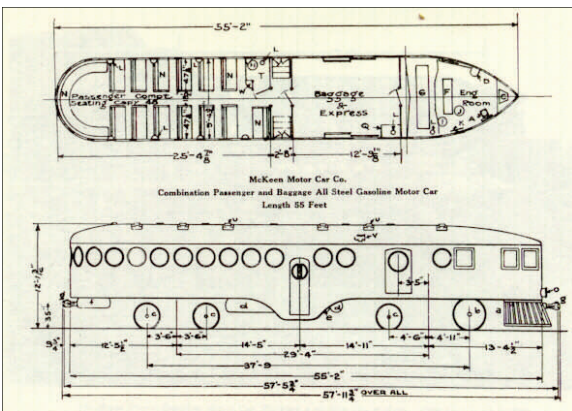




Left and above: Photographs of a couple of the scenes on Bob Ferguson's layout.



With the December clinic to be presented by Bob Belt, here's a link to a web page about the operational McKeen motor car in Nevada: <http://nevadatravel.net/travelgram/wp/index.php/features-2/the-mckeen-car-a-nevada-treasure/>. Pictured below right is a photo of a McKeen prototype, similar to Bob's brass model. See you at the December meeting.



Editor's comments: My first vehicle was a VW, and I owned three more with rear engines, including one I purchased while in the Army in Germany. It was a model that at the time was not yet imported into the United States. It had dual carburetors. When these models were imported they were equipped with electronic fuel injection. I saw the photo, above left, and thought it would make an interesting hi-railer model. The right photo is of an available model.

**THE LANTERN**  
NEWSLETTER FOR NMRA MCR DIVISION 10

210 BRANNON RD.  
NICHOLASVILLE, KY 40356-9711  
WWW.DIV10-MCR-NMRA.ORG



*DECEMBER 4, 1:30*

BEAUMONT BRANCH LIBRARY

*BRING AND BRAG*

PASSENGER CAR

*MEETING AGENDA*

BOB BELT—SCRATCH MODELING  
A SELF-PROPELLED CAR IN  
BRASS

*TOUR*

NONE

**AROUND THE BEND**

MON.	DAY	HOST	PLACE	EVENT / PROGRAM	TOURS	BRING & BRAG
Dec.	4	Div. 10	Beaumont Branch Library	Modeling in brass, Bob Belt		Passenger Car
Jan.	8	Div. 10	Tates Creek Branch Library	Route Signaling, Bruce DeMaeyer	Tom Bensberg—Modern N scale	Models to be entered in MCR Convention
Feb.	5	Div. 10	Beaumont Branch Library	Steam, Joe Holbrook	Lou Jaquith—HO scale P&L	Any model powered by steam
March	5	Div. 10	Tates Creek Branch Library	Modeling a prototype, including 3D printing, Stew Winstandley	Bruce DeMaeyer—Modern N scale	Flat or well cars with loads
April	2	Div. 10	At a library			

MCR 2017 Pan American Convention, Louisville at the Galt House, May 18th—21st.

<http://div8-mcr-nmra.org/site/2017PanAmerican/>

Great Train Expo Louisville - 21st and 22nd of January 2017 at the Kentucky International Convention Center in Louisville