



THE LANTERN



JUNE 2016

VOLUME 18, ISSUE 6

Superintendent's Report

Every even year Division 10 elects officers to serve for the next two years. The elected officers of Division 10 are the Superintendent, Assistant Superintendent, Secretary, and Treasurer. The new officers will begin their term at the October meeting. Officers are limited to two consecutive terms in any one office. Stew Winsteadley is the Nominating Committee chairman. Email him at skw.monon@yahoo.com to run for an office.

This year's Mid Central Region Convention was held in Dublin Ohio. The Convention theme was "Rails to the Capital" by the Buckeye Division. I checked in on Friday and after getting settled in began to check out the facility and different rooms that were set up for the convention. The Company store had white elephant sale items, and you could also purchase raffle tickets, in addition to Convention Car or other items. We also toured the contest room and I was particularly impressed with the N scale Saw Mill. It was the People's Choice Award winner and got the Best Structure award. As at most conventions, there was an abundance of clinics. My favorite clinics were the ones that Sam Swanson and Terry Terrance presented. Sam's clinic on detailing and painting vehicles from the 1930-1950 era was very informative and most of the techniques could be used on any scale or era. Terry had two Clinics, *Fun with LEDs* and *Micro-controllers* for Model Railroaders. The clinic on *Fun with LEDs* was outstanding and was full of great ideas and tips. The clinic on *Micro-Controllers* was again full of good ideas and tips. There are some videos of his clinic and if you are interested see Bob Belt or I and we will see that you get a copy.

On Friday, the Mid-Central Region board met to discuss old business and any new business. Most of the discussion was around Transfer of six Indiana counties to the North-Central region. There was also an appointment of a Nominating Committee Chairperson for the upcoming election. Current president Steve Kaplan is not running for another year. One of the last topics was for the approval of the 2019 MCR convention site. Nothing was finalized and this topic will be moved to the fall meeting. Sunday morning's Supers breakfast was centered on activities of some of the Divisions in regards to increasing membership and getting young people involved. Some great ideas, we hope to share with the division later. Overall a good convention, thanks to Division 6.

At our Division meeting on Sunday, May 8th our topic was Layout Evolutions. We will continue that topic at our June meeting. Bring and Brag was a kit bashed RR car. There were several entries. Thanks to Tom Miller, Tom Krill, Fred Plymale, Ken Dickey, Bob Ferguson and Lou Jaquith for your entries.

Keep modeling fun

Rick Cobb

Assistant Superintendent Ramblings

Meetings agenda:

June – Continuation of the panel/member discussion about our Division 10 layouts (Bruce DeMaeyer & Bill Robbins moderators). Please bring the T-trak landscaped modules. A couple of Boy Scout Troup Leaders have been invited to attend.

July – No meeting and no *Lantern*.

August – Saturday, August 6th at Grosser's near Eubank.

September—Structure judging for B&B (moved from June).

Something extra: a product review

Rapido RailCrew electromagnetic HO \$20 decoupler:

The decoupler is in a 'puck' that has magnets located on the ends of a rotating arm that moves 90⁰ when 12v DC is applied via a double-pole, double-throw momentary, center-off switch (supplied). The supplied connector/harness has contacts for a LED/470Ω resistor (supplied). The magnet orientation is controlled by the supplied DPDT switch – there is no 'centering' spring in the 'puck' – you have to flip the switch one way to uncouple and then switch the other way to neutralize. The momentary switch prevents continuous power to the 'puck' which could burn out the electromagnet wiring (says so in the instructions). With your internet browser, link to https://www.youtube.com/watch?v=BEJryNs_ptA to see a video (first six minutes) of the decoupler in action. According to Rapido, the 'puck' will uncouple KaDee's up to 1/4" below the rail head and my testing verifies – which leaves room for cork roadbed below the ties. Link to <http://rapidotrains.com/on-off-remote-coupler/>

— Bob Belt

From a May 19th Herald-Leader article: "A new state survey released May 10 showed that total travel spending in 2015 topped the \$2 billion mark for the first time ever in Fayette County." Division 10 helped the county reach that figure with our 2015 MCR convention.



For the NMRA MC Region officers link to www.midcentral-region-nmra.org/bod2.html

The Lantern is a monthly (except July) publication of Division 10, Mid Central Region (MCR), National Model Railroad Association. All opinions expressed herein are those of the authors, and do not necessarily reflect those of Division 10, the MCR, the NMRA, or anyone else.

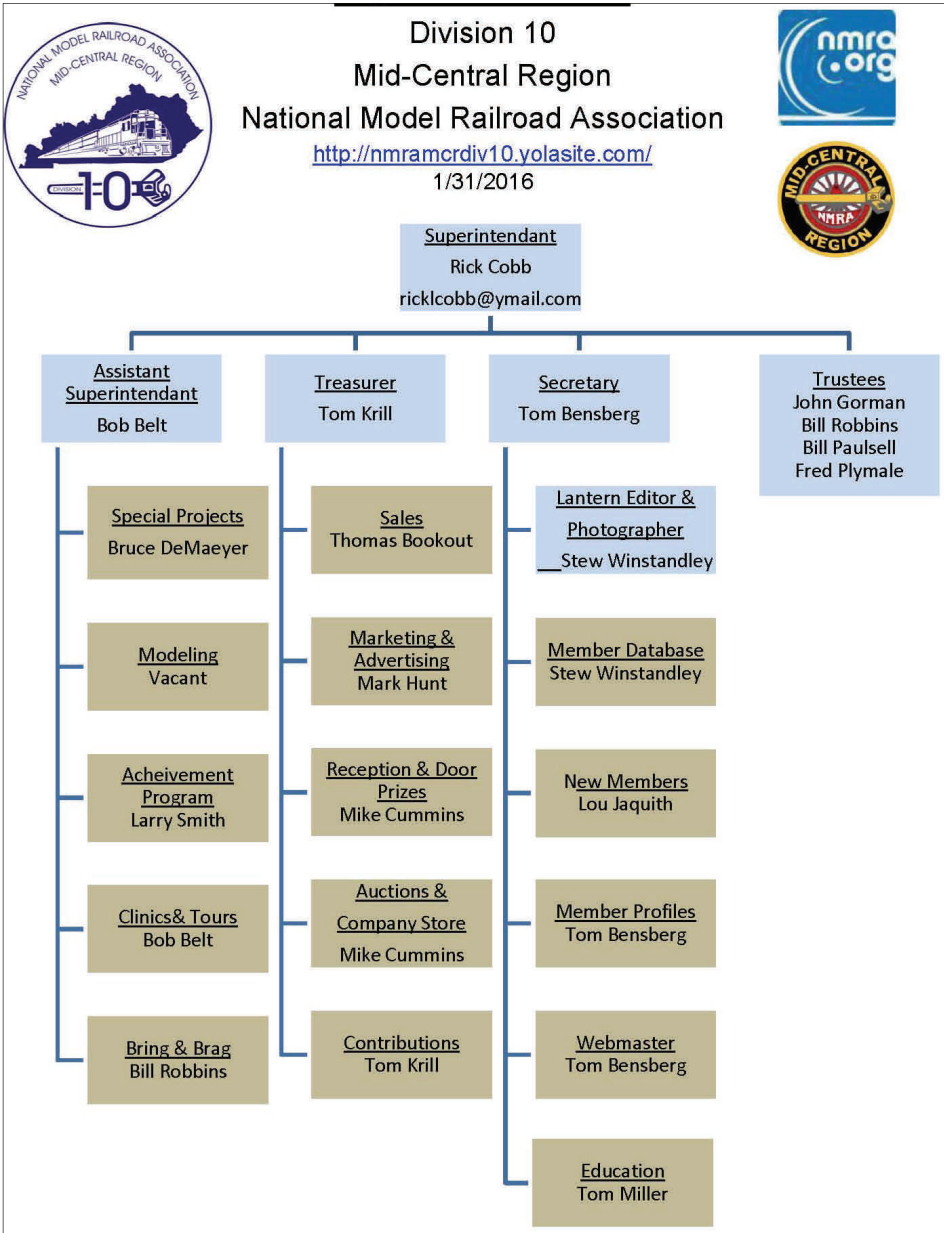
In Recognition...

Many thanks to folks listed in the column below. They have given their support for our club. We encourage all NMRA members to help with financial support to *The Lantern* and our website and the Division 10 activities. **Send your monetary contribution to our Treasurer.**

To be listed here your contribution needs to be at least \$20 in cash, or material valued at \$50, or a total of 20 hours time within the last year. Division 10 receives NO monetary support from the NMRA or the MidCentral Region. Div.10 is recognized by the US government as a 501c3 corporation and your cash or material donations may be tax deductible.

Report materials or time to Stew Winstandley. To the right of each contributing member's name is the month of his or her latest contribution. Whenever one makes a contribution of money, material, or time, his or her date will be updated, and for new contributors, their name will be added. Anyone not making a contribution within 12 months will be dropped .

John Stokes	4/2016
Raymond Cox	2/2016
Rick Cobb	12/15
Lou Jaquith	10/15
Tom Krill	"
Ed Andres	"
Don Burris	8/2015
Dave Battin	"
Paul Evans	"
Henry Sneed Jr.	"
Harold Weinberg	"
John Bowling	9/2015
Randy Coffman	6/2015
Chester Myers	"
Bill Robbins	"
Mark Hunt - paper and copying of printed materials	



Division 10 Treasurer's Report:

April 1, 2016—\$12,868.59;
Expenses: Lantern, \$20.58;
Contributions, \$50.00; Balance
April 30, 2016—\$12,898.01

Give or send your contribution to: Tom Krill, 3624 Windfair Ln. Lexington, KY 40515

Left: Bachmann's N scale Berkshire 2-8-4 Nickle Plate 765 running light on Bruce DeMaeyer's western themed main line. The locomotive is equipped for sound, speed, direction, and lighting control on a DCC layout.

Member Profile, by Bruce DeMaeyer

My model railroading mini-career started at the age of 12 when my Mom and Dad, aka Santa, gave me a complete set of American Flyer pars, including seven cars, two electrically operated turnouts, a huge power supply e/w a selenium stack rectifier, and several structures all of which became an annual display beneath the Christmas tree. My family was living in an apartment in Chicago and we had no room for any kind of a layout. I still have the entire package, and I think it helped me decide to pursue an electrical engineering career.

When my son was entering high school in Indianapolis, he and I built a 4'x8' N scale, dc powered layout with two electrically operated switches. That lasted until he discovered cars and girls.

My next foray was when we moved to Wyoming and I had more time on my hands and I built another 4'x8' N scale, dc powered layout with 6 switches and two double crossovers. This was where I developed my like for Kato Unitrack.

From a business perspective, I was involved in telecommunications for my entire career. I graduated with a BSEE in Electrical Engineering from the Illinois Institute of Technology in 1960. I was employed by Illinois Bell, a subsidiary of AT&T, holding various assignments in the Engineering and Operations departments. AT&T also assigned me to a stint at the Bell Laboratories and the Bell System Center for Technical Education.

In the 70s and early 80s I served as General Manager and VP Operations in Indiana and Illinois. In 1986, I was named President

of Ameritech Services. A couple of years later, I was named President of Ameritech Mobile.

In 1992, I formed my own consulting business, Great Western Teleconsulting, and I consulted to many of the largest telecommunications companies. I worked on major telecom projects in Russia, Kazakhstan, Azerbaijan, Greece, Saudi Arabia, China, India and, of course, the United States.

I have served on the Board of Directors of several companies, including Bell Communications Research (Bellcore), AirNet Communications, Beacon Wireless Partners (Maine PCS) and Sound Advantage as well as several non-profit charitable organizations.

As we consolidated our lives into a single place, my wife Nancy and I decided on Lexington, Ky. where, finally, I have both the time and the space to continue my mini-career.

We live on a beautiful horse farm (Nancy's) and have a beautiful hobby room (mine).

I am now modeling the very modern era, located in the western mountains, still in N scale, but now updated into DCC (Digitrax) controls and soon be computer driven (JMRI). My layout has 3.7 scale miles of double main track and 6 yards and 50+ turnouts and a lot of neat structures all underway.



Left: A Florida East Coast Railway consist of two locomotives, running with a LNG tender, completely out of their normal east coast environment, passing a BNSF freight on Bruce DeMaeyer's double track main line. Both locomotives are from Fox Valley Models. The lead locomotive is a GE ES44C4 and the second is GECX 3000, the *NextFuel* unit on loan to the FEC, for testing with natural gas as a fuel.

THE LANTERN
NEWSLETTER FOR NMRA MCR DIVISION 10

210 BRANNON RD.
NICHOLASVILLE, KY 40356-9711
WWW.DIV10-MCR-NMRA.ORG



JUNE 5, 1:30

BRING AND BRAG

NONE (RESCHEDULED TO SEPT.)

MEETING AGENDA

LAYOUTS EVOLUTION PANEL

TOUR

T-TRAK LAYOUT IN MEETING
ROOM FOR A BSA DEMO

AROUND THE BEND

MON.	DAY	HOST	PLACE	EVENT / PROGRAM	TOURS	BRING & BRAG
June	5	Div. 10	Central Christian Church, Watkins Bldg., E. Short Street	Layouts evolution—Panel discussion	T-trak layout demonstration for BSA	None
July	3-10	NMRA	Indianapolis	National Convention (web address below), Highball to Indy		
Aug.	<u>6</u> (Sat.)	Div. 10	Grosser's, near Eubank, Ky.	A list of officer candidates will be in <i>The Lantern</i>		
Sept.	4	Div. 10	Central Christian Church, Watkins Bldg., E. Short Street			Structure (judged)
Oct.	2	Div. 10		Installation of new officers		

<http://www.nmra2016.org/>