



THE LANTERN



APRIL 2016

VOLUME 18, ISSUE 4

Superintendent's Report

A big thank you goes out to Mark Underwood for his program on the T-trak system. He is in the photo with modules. This is going to be a tool that we can use to draw interest to our hobby. In today's world most people think they need a 4X8 to start and often are defeated before they begin. The T-Trak system is small and the cost is relatively minimal. If you haven't heard about T-trak, it is a model railroad that can be designed and built to run on a table top, thus the T (table) in T-trak. With a lower cost and small size, we hope this will keep the interest and hopefully will in turn bring an interest to join the hobby and the Division. Thank you also goes out to Bruce



DeMaeyer for bringing the idea to reality and to Bob Belt for putting the first T-trak boxes together and great instructions.

Looking ahead this month there is a lot of activity going on. The Mid Central Region Convention is April 28th, 29th and 30th. I have made my reservation and I'm really looking forward to it. The Blue Grass Railroad Club is planning a Swap Meet the evening of May 13th at their meeting place in Meadowthorpe. All Division 10 members are invited to come and we may get a table. More information will be available in April.

My tip this month is tools that make modeling a little easier. First thing if you don't already have a *SCALE RULER*, then you need to purchase one. When building anything for your layout you need to keep in scale. Another tool that is a must is knives. I like using the *X-acto* Knives and single edge razor blades. Working with wood, razor blades make clean and precise cuts. *X-acto* blades work well with wood or plastic. *Gluing tips* can also be a good investment. They put the glue in the exact location and you can control the amount of glue that you need. I also would recommend an assortment of *files*. Files are important when smoothing the edge before gluing or painting. These tools are great for beginning and as you advance you will find needs for other tools. A good source of tools is your local hobby shop, train shows and mail order companies like Micro Mark.

April's meeting will be held at the Tates Creek Library on April 3. The program will be Internet Model Railroad Resources with Tom Bensberg. Bring and Brag topic will be a Tank Car. The tour will be on Saturday April 16th, touring the Cincinnati Railroads. Looking forward to seeing you at these upcoming events.

Thanks to the judges for their time in judging the three entries in last month's bring and brag.

Keep modeling fun

Rick Cobb

Assistant Superintendent Ramblings

Clinics:

April – Tom Bensberg – Internet Model Railroad Resources. We'll do this at the Tates Creek library, large conference room so Tom has good Wi-Fi connectivity and can use the Division 10 projector and screen.

May/June – A panel/member discussion about progress on our Division 10 layouts with a moderator to be named, since Bill Robbins may not be available. The 'Members Layout Panel Questions' list is on page 3 (this is for the May and June meetings, the May meeting has been rescheduled to **May 8th** due to the final day of the MCR convention on May 1st).

Tours & Open houses:

The North Western Cincinnati layouts on Saturday, April 16th (3rd Saturday). We should plan on car-pooling up for about 3-4 hours of visits including lunch – for 30-45 minutes each layout and an hour for lunch. I'll have a more exact schedule and a map to John Burchnell's at the April meeting. John is preparing a schedule and will have maps to the 'next' destination when we get to the first layout. We need to get a preliminary headcount for this trip at the meeting.

The first layout is The Eastern Loggers at John Burchnell's. This is Pennsylvania logging in the mountains of central Pennsylvania featuring period steam in the early 1920's. We visited this layout a couple years ago. The layout has been featured in RMC, the NMRA Bulletin, & GMR '98. John did a clinic on The Eastern Loggers at our Thoroughbred Limited 2015 MCR Convention and as a guest clinician a year or so ago at Div. 10.

The second layout is the Panhandle Division of the Pennsylvania RR at Curt LaRue's. This is double track PRR mainline with branch line and transfer operations featuring large steam and diesel in the 1946 to 1954 era. This layout was featured in February '05 RMC and GMR '11 articles.

The third layout is the Pennsylvania RR at Ed Swain's. This is transition era late steam and early diesel in the 1945 to 1950's.

Continued on page 3



For the NMRA MC Region officers link to www.midcentral-region-nmra.org/bod2.html

The Lantern is a monthly (except July) publication of Division 10, Mid Central Region (MCR), National Model Railroad Association. All opinions expressed herein are those of the authors, and do not necessarily reflect those of Division 10, the MCR, the NMRA, or anyone else.

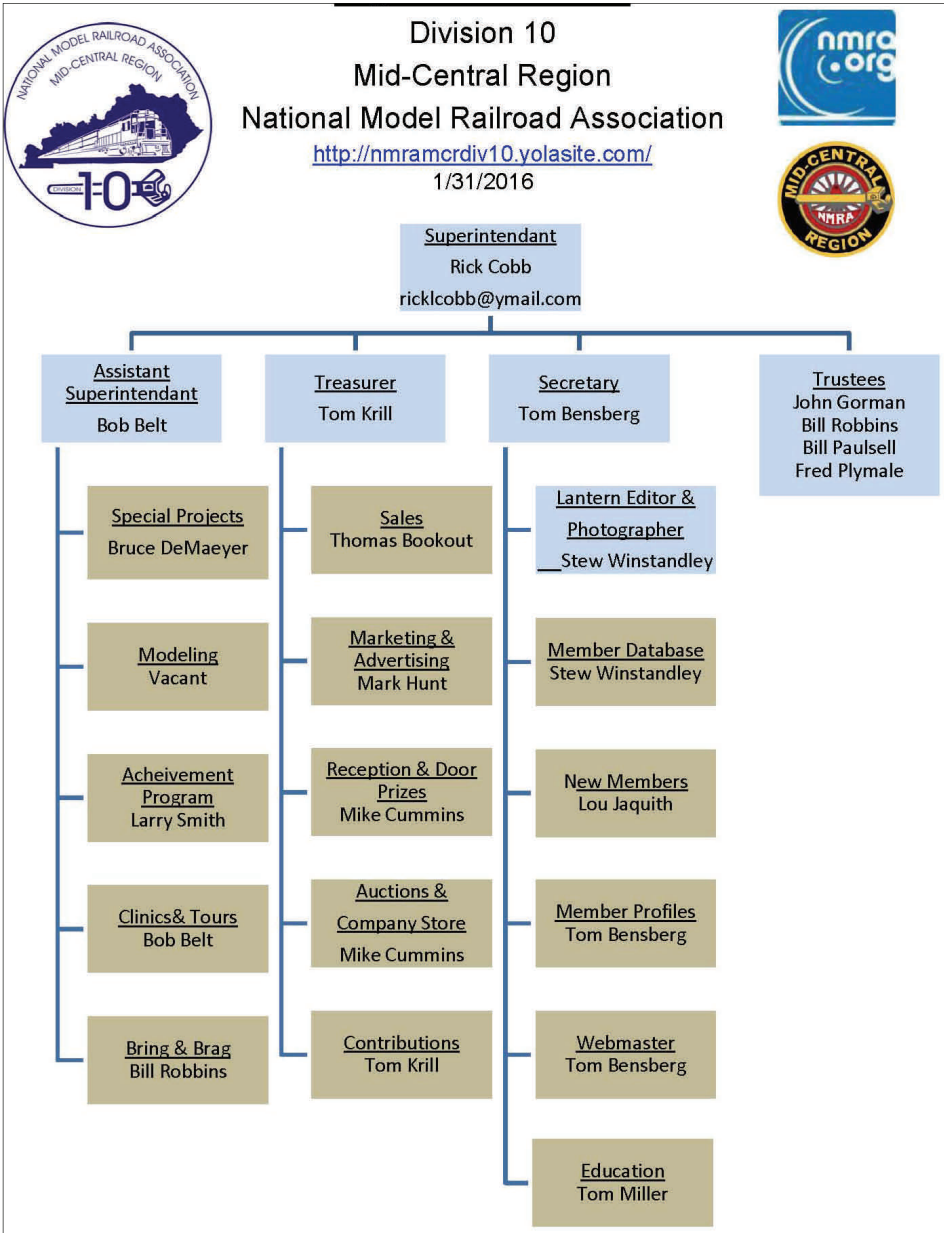
In Recognition...

Many thanks to folks listed in the column below. They have given their support for our club. We encourage all NMRA members to help with financial support to *The Lantern* and our website and the Division 10 activities. **Send your monetary contribution to our Treasurer.**

To be listed here your contribution needs to be at least \$20 in cash, or material valued at \$50, or a total of 20 hours time within the last year. Division 10 receives NO monetary support from the NMRA or the MidCentral Region. Div.10 is recognized by the US government as a 501c3 corporation and your cash or material donations may be tax deductible.

Report materials or time to Stew Winstandley. To the right of each contributing member's name is the month of his or her latest contribution. Whenever one makes a contribution of money, material, or time, his or her date will be updated, and for new contributors, their name will be added. Anyone not making a contribution within 12 months will be dropped .

| | |
|--|--------|
| Raymond Cox | 2/2016 |
| Rick Cobb | 12/15 |
| Lou Jaquith | 10/15 |
| Tom Krill | " |
| Ed Andres | " |
| Don Burris | 8/2015 |
| Dave Battin | " |
| Paul Evans | " |
| Henry Sneed Jr. | " |
| Harold Weinberg | " |
| John Bowling | 9/2015 |
| Randy Coffman | 6/2015 |
| Chester Myers | " |
| Bill Robbins | " |
| Clyde Burberry | 4/2015 |
| Ron Kercheval | " |
| Mark Hunt - paper and copying of printed materials | |



Division 10 Treasurer's Report:

Feb. 1, 2016—\$13,005.01;
Deposit: Contribution \$20.00;
Balance Feb. 29, 2016—\$13,025.01

Give or send your contribution to: Tom Krill, 3624 Windfair Ln. Lexington, KY 40515

2016 Bring and Brag Schedule

April—Tank car
May—Kit bashed car (freight, passenger or MOW)
June—Structure (to be judged)
Photos of the three cars entered for judging at the March meeting are on pg 3.

Right: Bruce DeMaeyer received his Electrical Certificate of Achievem-ent during our March meeting.



... ramblings from page 1

It was featured in a Lou Sassi MR article in April 2005. Ed did 2 clinics on low profile buildings at our Thoroughbred Limited 2015 MCR Convention.

The final layout is the L&N's Kentucky & Cumberland Valley Sub at Perry Simpson's. This is a walk around shelf layout of the Appalachian mountains of Eastern Kentucky and SW Virginia with steam & diesels on the L&N and steam on the K&CV in the 1952 to 1962 era. It was featured with Lou Sassi photos in GMR '13.

Note that the MCR 2016 convention in Columbus is the last week of April (the website address is on the bottom of page 4) and the NMRA National is in Indianapolis beginning July 3rd (<http://www.nmra.org/why-attend-national-convention>).

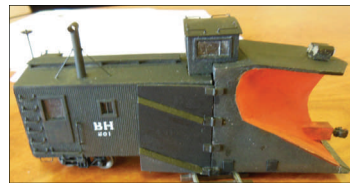
I'll ask for a count of members and guests at the April meeting that would be interested in doing an outing to EnterTrainment Junction in May – a Saturday to be determined. If we can get a group of 15 or more, the cost will be \$13/person. This will include the Back Stage tour. Regular door price is \$14 with another \$12 for the Back Stage tour, so this is a deal. Spouses, grand-children all count toward the magic 15 number. Another car pool.

— Bob Belt

Division 10 Members Layout Panel May 8, 2016

1. Why did you want to build a layout
2. What was your purpose
 - a. Just to run trains
 - b. Realistic scenery
 - c. Operations
3. Did you want to:
 - a. Model an actual place
 - b. Freelance
4. What did you consider
 - a. Steam
 - b. Era with steam and diesel
 - c. Diesels: 1960's, 1970's
 - d. Modern diesels
5. How did you develop your track plan
 - a. Describe your track plan
6. Where did you get your ideas
 - a. Magazines
 - b. Club Activities
 - c. Friends
 - d. Looking at other layouts
7. How did you decide on your gauge and why
8. Describe your layout construction
 - a. What space did you have with which to work

- b. Types of materials used
 - c. Is your layout portable
 - d. What are the dimensions
9. Track
 - a. Manufacturer
 - b. Laying track – glue, nail, etc. or by hand
 - c. Ballasting
10. Electrical
 - a. DC or DCC – Which system
 - b. Wiring
 - c. Switches (manual and/or powered)
 - d. Will you light buildings, street lights, signals
11. Scenery
 - a. Paints
 - b. Powders
 - c. Trees
 - d. Landscaping
 - e. Mountains
 - f. Rivers
 - g. Roads
 - h. Towns
 - i. Businesses
 - j. Farms
 - k. Materials
12. Structures
 - a. Wood, plastic, resin
 - b. Kits, or scratch built
13. Operations
 - a. Planning on it
 - b. Describe the system
 - c. Anticipated number of operators
14. Describe your current roster of engines and cars
 - a. Which manufacturers do you buy from and recommend
 - b. Do you use steel wheel sets
 - c. Coupler types



THE LANTERN
NEWSLETTER FOR NMRA MCR DIVISION 10

210 BRANNON RD.
NICHOLASVILLE, KY 40356-9711
WWW.DIV10-MCR-NMRA.ORG



APRIL 3, 1:30

BRING AND BRAG

TANK CAR

MEETING AGENDA

INTERNET MODELING
RESOURCES—TOM BENSBERG

TATES CREEK LIBRARY

TOUR

SATURDAY, APRIL 16TH IN
CINCINNATI AREA

AROUND THE BEND

| MON. | DAY | HOST | PLACE | EVENT / PROGRAM | TOURS | BRING & BRAG |
|------------|----------|----------------|---|--|--|---------------------------|
| April | 3 | Div. 10 | <u>Tates Creek Library</u> | Internet Model Railroad Resources—Tom Bensberg | Saturday, April 16th, Cincinnati area | Tank Car |
| April | 28- | Div. 6 | Embassy Suites, Dublin, Ohio | 2016 MCR Convention | Convention Website Address below | |
| May | 8 | Div. 10 | Central Christian Church, Watkins Bldg., E. Short Street | Layouts evolution—Bill Robbins, moderator | | Kit bashed RR car |
| June | 5 | Div. 10 | Central Christian Church, Watkins Bldg., E. Short Street | Layouts evolution—see questions on page 3 | | Structure (judged) |
| July | 3-10 | NMRA | Indianapolis | National Convention | | |

http://2016convention.div6-mcr-nmra.org/home_B.html

April 28, 29, 30 and May 1, 2016