



THE LANTERN



MARCH 2016

VOLUME 18, ISSUE 3

Superintendent's Report

What a great turn out for our February meeting. It was good to see everyone after being away for a couple of months. Thanks to Bob Belt for his program on RTV Molds and Resins casting. He showed some of his casting molds and then provided the finished products from his castings. I personally got some good info and have started to work on some castings.

Bruce DeMaeyer had a short presentation on the T-trak we are going to build as a division. We have 8 members that have volunteered to finish each of the sections. Bruce explained how we are going to use the T-trak to build interest outside of the division and display it at conventions, schools, and Boy Scouts.

Thanks to Bill Paulsell for inviting us to see his HO layout.

At the March meeting Mark Underwood will present "The Introduction to T-trak". Don't be left out of this awesome project. Thanks to Bob Belt for constructing the first six sections.

At our last meeting, I handed out the badges that had been ordered. They look great and they are really easy to read. The big advantage is they don't fall off. I still have some that can be picked up at the March meeting. If you have a pace maker you might want to find out if the magnet will affect you. I can still order badges if you haven't gotten one. They are \$8.00. Send me an email at ricklcobb@ymail.com if you are interested in getting one, and I will have it for you at the March meeting.

Bring and Brag had several entries and again shows the modeling ability of our members. Thanks to all that participated. March will bring us to our second judged contest. The subject is a railroad car. Fill out NMRA Form #901 for your entry. *Form #901 is available online at: http://www.nmra.org/sites/default/files/nmra_contest_entry_form.pdf*

My tip of the month is still about painting but I want to focus on the brushes. Most paints have their own thinner or brush cleaner available at your local hobby store. I have found one brush cleaner that is better when painting with Testors enamel. Model Master Metalizer Brush cleaner does a more thorough job than the regular brush cleaner. It has a little more bite and cleans the brushes better. Also make sure you don't leave brushes in the cleaner or your brush will be in the shape of a fish hook, rendering it pretty much useless. I have found that the Metalizer also works great for cleaning your air brush. Put a little Metalizer in your air brush and spray it out. Your air brush will be clean and ready for its next use. A little in the bottle and a paper towel will clean your bottle or paint container too.

Looking forward to seeing you at the meeting on March 6th.

Keep modeling fun

Rick Cobb

Assistant Superintendent Ramblings

Clinics:

March – Mark Underwood - Introduction to T-trak modules. The Division 10 oval (4 corners and 2 straight modules) should be ready to run. Pictured on page 3 is a corner T-trak module.

April – Tom Bensberg – Internet Model Railroad Resources. We'll do this at the Tates Creek library's large conference room so Tom has good Wi-Fi connectivity.

May/June – A panel/member discussion about progress on our Division 10 layouts with Bill Robbins, moderator. I understand this was done a couple years ago and we will see the progress that has been made, along with a couple new layouts.

Tours & Open houses:

The Cincinnati layouts trip's on Saturday, April 16th (3rd Saturday). We should plan on car-pooling up for about 3-4 hours of visits including lunch. Trip details at the April meeting.

The first layout is The Eastern Loggers at John Burchnell's. This is Pennsylvania logging in the mountains of central Pennsylvania featuring period steam in the early 1920's. We visited this layout a couple years ago. The layout has been featured in RMC, the NMRA Bulletin, & GMR '98. John did a clinic on The Eastern Loggers at our Thoroughbred Limited 2015 MCR Convention and as a clinician a year or so ago at Division 10.

The second layout is Curt LaRue's Panhandle Division of the Pennsylvania RR. This is double track PRR mainline with branch lines and transfer operations featuring large steam and diesel in the 1946 to 1954 era. This layout was featured in Feb. 2005 RMC and GMR 2011 articles.

The third layout is Ed Swan's Pennsylvania RR. This is transition era late steam and early diesel in the 1945 to 1950's. It was featured in a Lou Sassi MR article in April 2005. Ed did clinics on low profile buildings at our 2015 MCR Convention.

The final layout is Perry Simpson's L&N Kentucky & Cumberland Valley Sub. This is a walk around shelf layout of

Continued on page 3



For the NMRA MC Region officers link to www.midcentral-region-nmra.org/bod2.html

The Lantern is a monthly (except July) publication of Division 10, Mid Central Region (MCR), National Model Railroad Association. All opinions expressed herein are those of the authors, and do not necessarily reflect those of Division 10, the MCR, the NMRA, or anyone else.

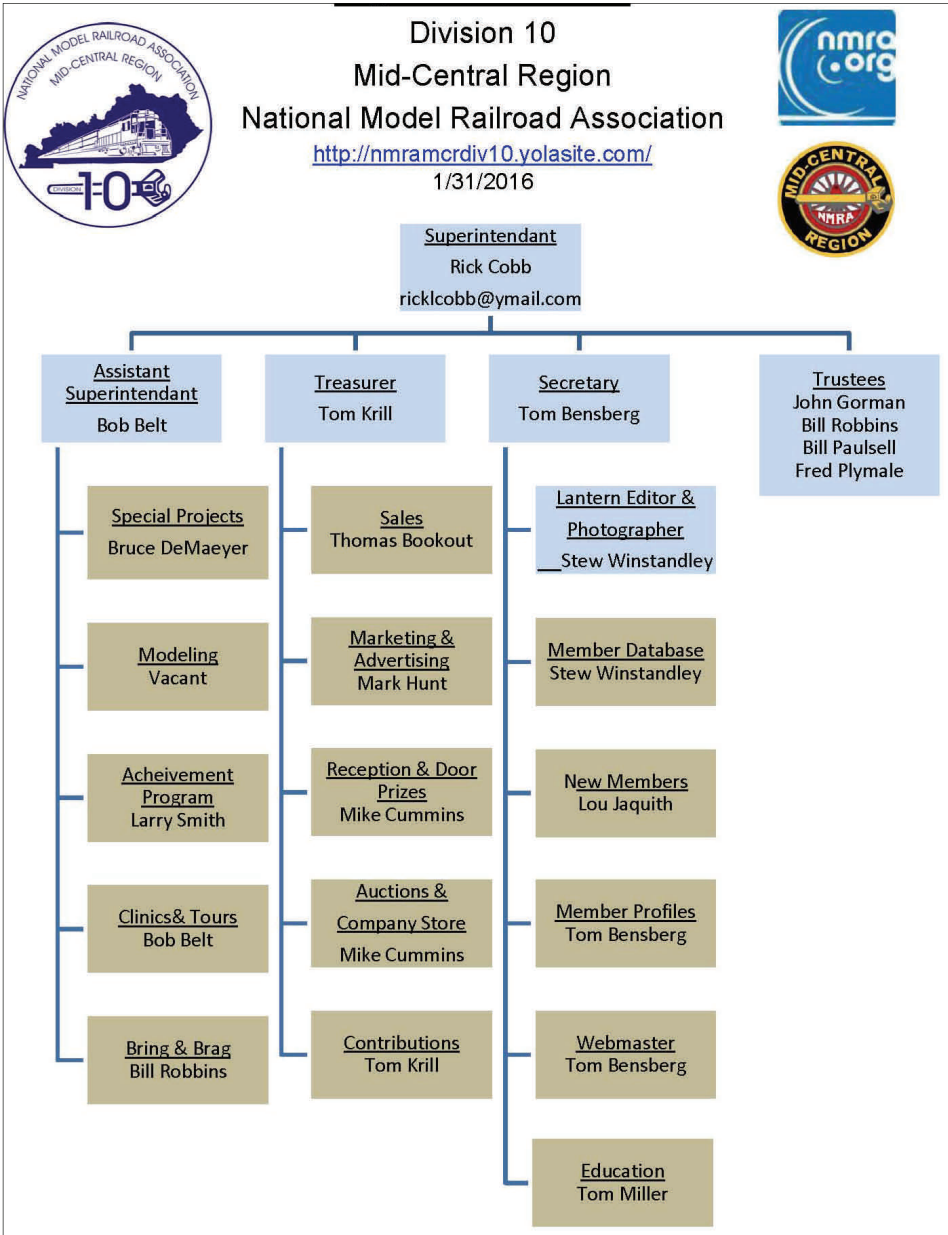
In Recognition...

Many thanks to folks listed in the column below. They have given their support for our club. We encourage all NMRA members to help with financial support to *The Lantern* and our website and the Division 10 activities. **Send your monetary contribution to our Treasurer.**

To be listed here your contribution needs to be at least \$20 in cash, or material valued at \$50, or a total of 20 hours time within the last year. Division 10 receives NO monetary support from the NMRA or the MidCentral Region. Div.10 is recognized by the US government as a 501c3 corporation and your cash or material donations may be tax deductible.

Report materials or time to Stew Winstandley. To the right of each contributing member's name is the month of his or her latest contribution. Whenever one makes a contribution of money, material, or time, his or her date will be updated, and for new contributors, their name will be added. Anyone not making a contribution within 12 months will be dropped .

Rick Cobb	12/15
Lou Jaquith	10/15
Tom Krill	"
Ed Andres	"
Don Burris	8/2015
Dave Battin	"
Paul Evans	"
Henry Sneed Jr.	"
Harold Weinberg	"
John Bowling	9/2015
Randy Coffman	6/2015
Chester Myers	"
Bill Robbins	"
Clyde Burberry	4/2015
Ron Kercheval	"
Mark Hunt - paper and copying of printed materials	



Division 10 Treasurer's Report:

Jan. 1, 2016—\$13,039.85;
Expenses: Lantern \$34.84;
Balance Jan. 31, 2016—\$13005.01

Give or send your contribution to: Tom Krill, 3624 Windfair Ln. Lexington, KY 40515

2016 Bring and Brag Schedule

- March—Railroad Car (judged)
- April—Tank car
- May—Kit bashed car (freight, passenger or MOW)
- June—Structure (to be judged)

Meet Pat Gerstle

Pat has been active in narrow gauge modeling for over 30 years, starting with a move to Colorado (courtesy of IBM). He was one of the original founders of the Boulder Model Railroad Club and tried HOn3 for a while. He's still writing software full-time and still always has a kit under construction. Other interests include photography, guitar, and his grandchildren.



MARCH 2016 • **Model Railroader** 37

... ramblings from page 1

the Appalachian mountains of Eastern Ky. and SW Virginia with steam & diesels on the L&N and steam on the K&CV in the 1954 to 1962 era. It was featured with Lou Sassi photos in GMR 2013.

The MCR 2016 convention (web address on page 4) in Columbus is the last week of April and the NMRA National is in Indianapolis the week of the 4th of July.

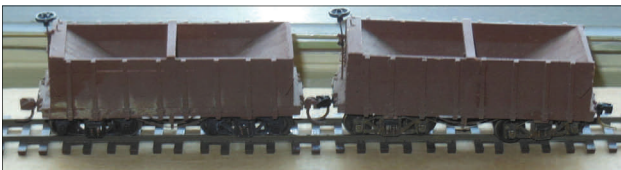


Other: above: T-trak corner module; right: February tour at Bill Pausell's HO layout.

The Division 8 operators interchange is alive and well. There was a group from Div. 8 at Larry Smith's in January. Rus Weiss and I discussed getting to several of the Louisville layouts this spring. We'll get a schedule together in the next month or so.

Division 10 member, Pat Gerstle, has his layout featured in a March 2016 *Model Railroader* article (see insert bottom of page 2). Not mentioned in the article is the location of his layout, Jessamine County, Ky.

—*Bob Belt*



February Bring and Brag entries (above right, then clockwise): Lou Jaquith's, Rick Cobb's, Don Burris', Ed Butcher's, and David Battin's.

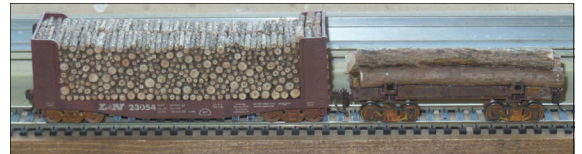
Member Profile

Mike Cummins is our spot light profile for the month of March. Mike is 63 years old and lives in Frankfort with his wife Vickie. Mike was employed by the Commonwealth of Kentucky for 30 years. Mike retired but decided to reenter the work force spending the next 10 years with Wal-Mart. After leaving Wal-Mart, Mike worked the next three years at Days Inn before retiring for good.

Mike was president of the Bluegrass RR Club and has been with Division 10 since its inception. He currently has a 10X20' layout in his basement in N scale. He would like to have an operation session at some point.

Mike's love for trains began with his Grandfather who worked a lifetime with the L&N Railroad. Mike lived in the downtown area of Frankfort and got a close up look at trains daily. Mike hopes to pass down his love of trains to his two grandsons, Diego, 6 and Valentin, 4.

Mike has served as our Door and Door prize Chairperson for the last 3+ years.



THE LANTERN
NEWSLETTER FOR NMRA MCR DIVISION 10

210 BRANNON RD.
NICHOLASVILLE, KY 40356-9711
WWW.DIV10-MCR-NMRA.ORG



MARCH 6, 1:30

BRING AND BRAG

RAILROAD CAR TO BE JUDGED

MEETING AGENDA

MARK UNDERWOOD—T-TRAK

TOUR

DIVISION 10'S T-TRAK
MODULES WILL BE ON DISPLAY
AT THE MEETING

AROUND THE BEND

MON.	DAY	HOST	PLACE	EVENT / PROGRAM	TOURS	BRING & BRAG
March	6	Div. 10	Central Christian Church, Watkins Bldg., E. Short Street	Introduction to T-trak Modules—Mark Underwood	None	RR Car (judged), bring a completed form #901 (see pg. 1) with your car
April	3	Div. 10	Tates Creek Library	Internet Model Railroad Resources—Tom Bensberg	Saturday, April 16th, Cincinnati area	Tank car
April	28-	Div. 6	Embassy Suites, Dublin, Ohio	2016 MCR Convention	Convention Website Address below	
May	1	Div. 10	Central Christian Church, Watkins Bldg., E. Short Street	Layouts evolution—Bill Robbins, moderator		Kit bashed RR car
June	5	Div. 10	Central Christian Church, Watkins Bldg., E. Short Street	Layouts evolution—Bill Robbins, moderator		Structure (judged)

http://2016convention.div6-mcr-nmra.org/home_B.html

April 28, 29, 30 and May 1, 2016