



THE LANTERN



SEPTEMBER 2015

VOLUME 17, ISSUE 9

Superintendent's Report

What a summer it has been. Hope everyone has enjoyed their time away from our Division, but it is time to get going again. I want to bring you up to date with some of the activities and changes coming to the Division.

On Sunday, August 2, 2015, members of the Division, wives and families traveled to Versailles for a picnic and train ride on the Bluegrass Railroad. The staff at Bluegrass set up a cover for us so the food would not cook in the sun. The Bluegrass Museum staff was so accommodating. Lunch consisted of fresh cold cuts, croissants and all the trimmings. We would have had fruit but somehow it was left in Bruce's truck! After lunch, we were able to tour the museum and their equipment located around the grounds. They have a super nice L&N caboose that was opened to walk through and several old diesel engines. Inside the station they have a nice museum with artifacts from days gone by. There was a small layout that I found out had been loaned by our own John Gorman. At 2 PM it was time to board the train for the trip to the river and back. From what I saw a good time was had by all.

There are some changes coming to our Bring and Brag contest. Several members have voiced a concern and say they would like to see B&B be just that. Bring and then brag about it without judging. Some felt it was more of a popularity contest and not about the item and skills used. So after a lot of deliberation, starting in September we will start the new year for B&B with bring it and brag about it, no judging. For three months (September, October, and November) we will bring and brag on the topic of the month. The fourth month (December) we will have a topic that will be judged by our AP judges. Points will be award just like at the conventions. This should

help us get more familiar with actual AP judging and get us ready for convention contests. The member with the most points from the judging at the end of the B&B year will be the winner of the contest. A list of B&B items and judged dioramas for this year are listed in this issue on page 3.

Another topic that has been discussed is our Door Prize items. It seems the well has dried up with nice items for the door prizes. In the discussion with some members we came up with a plan to have nice prizes and add a little money to the club. Starting in October we will begin a raffle. The items will be some of the items left over from the convention and some will be donations. You will be able to see the items up for grab and purchase tickets before the meeting starts. The tickets will sell for a dollar for one or 6 for \$5. We will have both HO and N scale items. There may be a minimum amount for the item to sell. That has yet to be determined.

Also in October we will begin a tradition that has been done in the past. Each month in the *Lantern*, a member will be in the spotlight. It's a great chance to learn about other members in the club. We promise not to let out any secrets!

Our sympathy goes out to Mike Cummins and his family in the loss of his mother. She passed away on Thursday, August 13.

Keeping modeling fun

—Rick Cobb

Assistant Superintendent Ramblings

We will have another special walking event on Sunday, September 20th at 1:00 PM. This one is a walking tour of railroads in downtown Frankfort. The tour will be guided by Charles Bogart – who gave one of the clinics at our MCR 2015 Thoroughbred Limited Convention. The tour will cover the CSX, C&O, L&N, ...*continued on page 3*

In Recognition...

Many thanks to folks listed in the column below. They have given their support for our club. We encourage all NMRA members to help with financial support to *The Lantern* and our website and the Division 10 activities. **Send your monetary contribution to our Treasurer.**

To be listed here your contribution needs to be at least \$20 in cash, or material valued at \$50, or a total of 20 hours time within the last year. Division 10 receives NO monetary support from the NMRA or the MidCentral Region. Div.10 is recognized by the US government as a 501c3 corporation and your cash or material donations may be tax deductible.

Report materials or time to Stew Winstandley. To the right of each contributing member's name is the month of his or her latest contribution. Whenever one makes a contribution of money, material, or time, his or her date will be updated, and for new contributors, their name will be added. Anyone not making a contribution within 12 months will be dropped .

Randy Coffman	6/2015
Chester Myers	"
Bill Robbins	"
Clyde Burberry	4/2015
Franklin Miller	1/2015
Alan & Judy Bourne	12/14
Ray & Renee Grosser	12/14
Don Burris	10/14
Lou Jaquith	"
Raymond Cox	"
Bill Paulsell	"
Tom Krill	"
John & Mary Stokes	9/2014
David Battin	7/2014
John Bowling	"
Ed Butcher	"
Mark Hunt	- paper and copying of printed materials



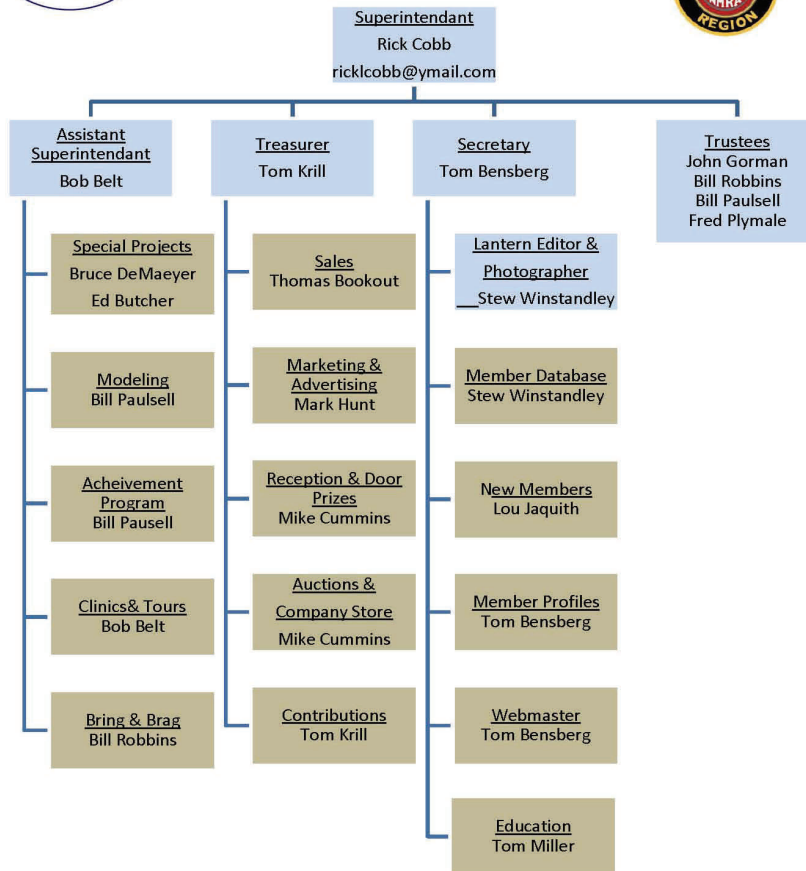
For the NMRA MC Region officers link to www.midcentral-region-nmra.org/bod2.html

The Lantern is a monthly (except July) publication of Division 10, Mid Central Region (MCR), National Model Railroad Association. All opinions expressed herein are those of the authors, and do not necessarily reflect those of Division 10, the MCR, the NMRA, or anyone else.

Organizational Chart

Division 10
Mid-Central Region
National Model Railroad Association

<http://nmramcrdiv10.yolasite.com/>
7/15/2015



Division 10 Treasurer's Report:

July 1, 2015—\$3944.43; Expenses: \$.00; Deposits: Sales, \$5.00 ; Balance July 31, 2015—\$3949.93

Give or send your contribution to: Tom Krill, 3624 Windfair Ln. Lexington, KY 40515

Bring and Brag

2014-2015 FINAL standings: **Bill Robbins**, 12.5; Bill Paulsell and Lou Jaquith, 8; Bob Ferguson and Dave Battin, 6; Rick Cobb and Bob Belt, 3; Ed Butcher, 2.5; Tom Underwood, 2; and Don Burris and Tom Wipert, 1point.

2015 CINCINNATI TRAIN & TRADE SHOW 11 AM-5 PM, SAT & SUN, OCT 10 & 11

The large and very popular annual **Cincinnati Model Train and Trade Show** will be on **Sat & Sun Oct 10 & 11** in the familiar **Lakota West High School** at 8940 Union Center Ave, West Chester, OH 45069.

from page 1... KY traction, interurban and Capitol City street car – all in a 2 block area of Frankfort. We will start at the Depot in Frankfort at Broadway & Ann at 1:00 PM. The fall back rain date is Saturday, September 19th, same time. There is no cost on this one and we may want to car pool over to Frankfort. More information at our September 6th meeting.

In October, Tom Miller has arranged a special visit to the Garden Railroad at the Arboretum on Alumni Drive from 3-4 PM on Sunday, October 4th following our regular meeting. What makes this layout unique is that it was designed by Paul Busse, founder of Applied Imagination. Paul has created countless award-winning garden railway displays across the country including installations at New York Botanical Garden, United States Botanic Garden in Washington, D.C., Chicago Botanic Garden, Morris Arboretum of the University of Pennsylvania, Atlanta Botanic Garden, New Orleans Botanical Garden, Bellagio Conservatory in Las Vegas, The State Fair of Texas and now in Lexington, Ky.

Tom was able to get them to waive the regular fee with the understanding that we (Div. 10) would like to encourage more members to consider volunteering to run the trains on a flexible schedule.

November's tour will be on the 7th at John Bowling's in Danville. The meeting is on the 1st. I'm working on a tour for December.

The Fall clinics are firming up and the schedule looks like this:

Sept. 6 – Mark Underwood. Part II of JMRI 101 – Intro to Decoder Pro 3. The clinic will hopefully be a live demo on Decoder Pro, covering why you want to use it, how to set it up, programming locomotives, roster management, and maybe a neat trick or two.

Oct. 4 – Bob Lawson: Two possible topics – Bob is going to let me know by 1st week of September which one he will do.

First: Making a two foot wide table area on your railroad have some appeal. Operators may not care, but I have given this clinic to a number of operators, and they saw what could easily be done with scenic work, narrow buildings, track location, and using a foam base to achieve this. It did open some eyes.

Second: A clinic on making Scenic Express "Super Trees"; rubber rocks by "Cripplebush Modelworks"; water materials for river, stream, or pond.

Nov. 1 – Fred Plymale – Board on board construction, Tools and Tips.

Dec. 6 – Bruce DeMaeyer – Ten Commandments of Model Railroad Yard Design.

—Bob Belt

2015-2016 Bring and Brag Schedule

- September—Off line structure (anything not track side)
- October—Freight car other than flat, tank or open hopper
- November—Modelers choice
- December—Diorama with an online structure (judged)
- January—Flat car with load
- February—Open top hopper or a log car
- March—Diorama with a commercial structure (judged)
- April—Tank car
- May—Kit bashed car (freight, passenger or MOW)
- June—Diorama with track side activity (to be judged)

Abraham Lincoln Funeral Train @ Bluegrass Railroad Museum

175 Beasley Rd, Versailles KY, September 5th, 6th, and Labor Day 7th




Ride the train behind an operating 4-4-0 steam engine

The "Leviathan" an 1860's era reproduction
Civil War Trains at 2 and 4 pm daily

Each train ride includes a photo run by, so bring your cameras!

Adult Coach \$29.00	Child Coach 2-12 \$21.00
Adult First Class with A/C \$36.00	Child First Class with A/C \$31.00

Advance tickets recommended at www.BluegrassRailroad.com
(Half of every ticket price donated to the Lincoln train Project)



Also, for a small donation, tour a replica of the Abraham Lincoln Funeral Car that carried the slain president in 1865 from Washington DC to his final rest in Illinois.

Information and Tickets visit www.BluegrassRailroad.com

THE LANTERN
NEWSLETTER FOR NMRA MCR DIVISION 10

210 BRANNON RD.
NICHOLASVILLE, KY 40356-9711
WWW.DIV10-MCR-NMRA.ORG



SEPT. 6, 1:30
BRING AND BRAG
OFFLINE STRUCTURE
MEETING AGENDA
DECODER PRO
TOUR

NONE AFTER THE MEETING. SEE
PAGE 1 ABOUT A FRANKFORT
WALKING TOUR ON SEPT. 20TH.

AROUND THE BEND

MON.	DAY	HOST	PLACE	EVENT / PROGRAM	TOURS	BRING & BRAG
Sept.	6	Div. 10	Central Christian Church, Watkins Bldg., E. Short Street	Decoder Pro—Mark Underwood	Frankfort walking tour on Sept. 20th. See column 2 page 1.	Offline Structure
Oct.	4	Div. 10	Central Christian Church, Watkins Bldg., E. Short Street	Bob Lawson	Arboretum on Alumni Drive	Freight Car (see page 3)
Oct.	10-11	Div. 7	Lakota West High School, West Chester, Ohio	Train & Trade Show, 11-5 http://www.cincy-div7.org/events.html		
Nov.	1	Div. 10	Central Christian Church, Watkins Bldg., E. Short Street	Board on Board Construction—Fred Plymale	John Bowling, noon-2, Sat. Nov. 7 Danville, Ky.	Modelers Choice
Nov.	21	Div. 8	4615 Fegenbush Ln, Louisville, Ky.	Train Show & Sale, 10-3, http://div8-mcr-nmra.org/site/index.htm		