



THE LANTERN



JUNE 2015

VOLUME 17, ISSUE 6

Superintendent's Report

2015 Thoroughbred Limited convention is over and what a great convention it was. Each and every member should be proud of the job that they did to make this convention a great success. Without the hard work we could have never pulled this off. The Division received numerous complements. Going into the preparations there was a lot of doubts. But we pulled it off and even made a little money for the division. The totals are yet to be tabulated but from all the prelims we did make a little.

Some facts that you may not be aware of and I was surprised to find out, that we had a first that we achieved. I was told the ratio of Non Rail attendees to total attendees was the highest percentage of any convention by almost two times. We had 77 Non rail attendees and a total of 227 attendees. I believe the high attendance for the non rails was due to the many activities that Lexington and the surrounding areas had to offer. Several ladies told me that this was a great place to tour and they were having a great time touring around Lexington. We also sold out all of our bus tours. I heard the guys coming back from the TTI tour saying they would have paid twice as much for the tour. There were many complements from all the tours and thanks to all involved in the planning and execution. The photograph to the right was taken on the Norfolk Southern Delaplain/Rogers Gap yard tour. Pictured, center, is our Industrial Tours director Thomas Bookout along with the NS train master host to the right.

Words can't express my appreciation to Bruce DeMaeyer and all the work that he did to coordinate this massive mission. It was great knowing that he crossed every T and dotted every I. Thank You Bruce! Another big thanks goes to Tom Bensberg, webmaster, and Bob Belt, clinics,

for all their hard work. Also, I wanted to say a special thank you to all the wives that helped with the convention. Without their assistance we would have been in some trouble with several parts of the convention. A special thanks to Bev Jaquith for taking care of the Hospitality room. I think she was there from start to finish every day.

We had four of our members to receive awards in the contests. Larry Smith and Bob Belt tied for first in Judged Structures. They had two beautiful models. Yours truly finished with a People's Choice award for Locomotive with my 1905 Shay. It was exciting to place the first time



that I had entered and I learned a lot. Pat Gerstle received the Martha Newberry Award for his

structure/display (in photo on page 3).

Lastly I want to thank the hotel and their staff. From the beginning, they delivered on every promised and delivered first class service. Even during their remodel, they kept telling us they would be ready and they were. The hotel was beautiful and I heard many complements.

We should all be proud of our division and we can hold our heads high. Thanks to all for a **JOB WELL DONE.**

Keeping modeling fun

—Rick Cobb

P.S. Pete Birdsong got it started before moving to Calif.

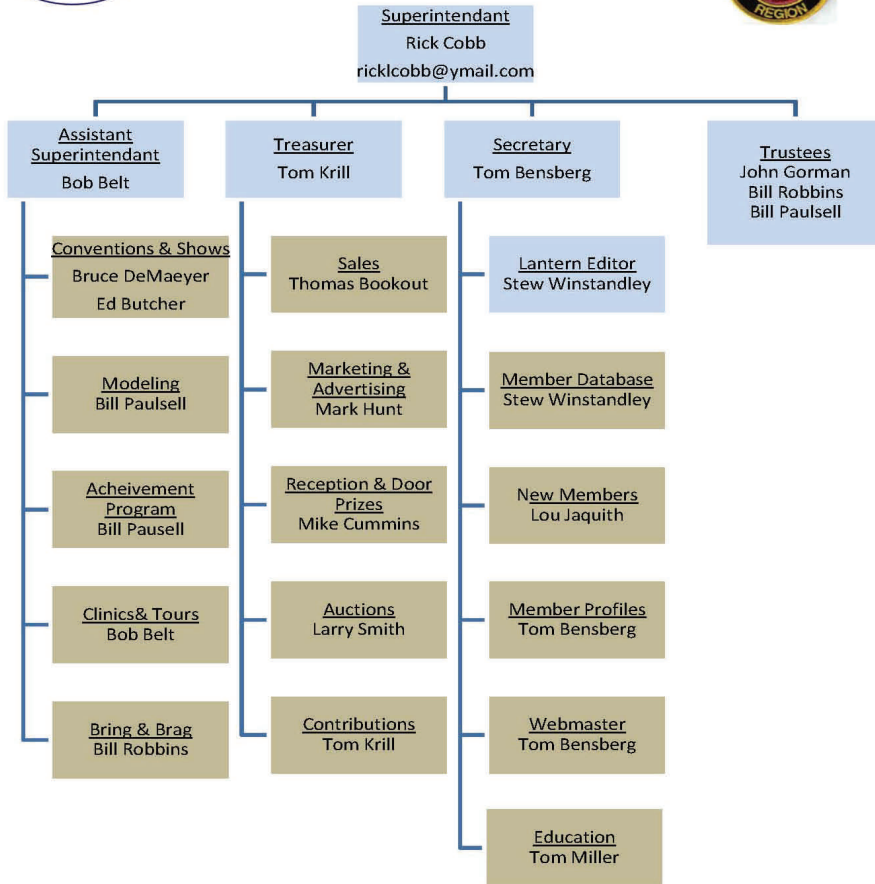


For the NMRA MC Region officers link to www.midcentral-region-nmra.org/bod2.html

The Lantern is a monthly (except July) publication of Division 10, Mid Central Region (MCR), National Model Railroad Association. All opinions expressed herein are those of the authors, and do not necessarily reflect those of Division 10, the MCR, the NMRA, or anyone else.



Division 10
Mid-Central Region
National Model Railroad Association
www.div10-mcr-nmra.org



In Recognition...

Many thanks to folks listed in the column below. They have given their support for our club. We encourage all NMRA members to help with financial support to *The Lantern* and our website and the Division 10 activities. **Send your monetary contribution to our Treasurer.**

To be listed here your contribution needs to be at least \$20 in cash, or material valued at \$50, or a total of 20 hours time within the last year. Division 10 receives NO monetary support from the NMRA or the MidCentral Region. Div.10 is recognized by the US government as a 501c3 corporation and your cash or material donations may be tax deductible.

Report materials or time to Stew Winsteadley. To the right of each contributing member's name is the month of his or her latest contribution. Whenever one makes a contribution of money, material, or time, his or her date will be updated, and for new contributors, their name will be added. Anyone not making a contribution within 12 months will be dropped .

Clyde Burberry	4/2015
Franklin Miller	1/2015
Alan & Judy Bourne	12/14
Ray & Renee Grosser	12/14
Don Burris	10/14
Lou Jaquith	"
Raymond Cox	"
Bill Paulsell	"
Tom Krill	"
John & Mary Stokes	9/2014
David Battin	7/2014
John Bowling	"
Ed Butcher	"
Henry Sneed	6/2014
Bill Robbins	5/2014
Chester Myers	"
Rick Cobb	"
Randy Coffman	"
Mark Hunt	- paper and copying of printed materials

Division 10 Treasurer's Report:

Balance April 1—\$2388.85; Expenses: Lantern \$19.80, Commonwealth of Ky. \$15.00; Deposits: Sales \$30.00, Contribution \$20.00; Balance April 30, 2015—\$2404.05

Give or send your contribution to: Tom Krill, 3624 Windfair Ln. Lexington, KY 40515

Bring and Brag

2014-2015 standings: Bill Robbins, 12.5; Bill Paulsell, 8; Bob Ferguson and Dave Battin, 6; Lou Jaquith, 5; Rick Cobb and Bob Belt, 3; Ed Butcher, 2.5; and Don Burris, 1point. Bill Paulsell was first, Bob Ferguson second, and Bill Robbins third at the May meeting. Bill Paulsell's winner is to the right.

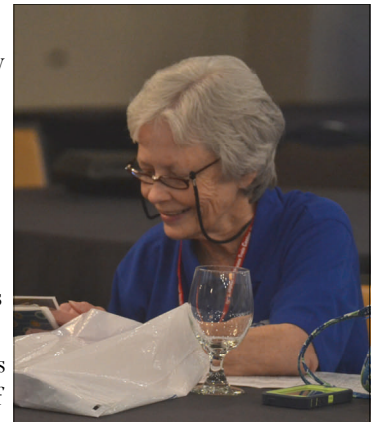


Website address link to 2015 convention photos, a few are shown below:

<https://www.flickr.com/photos/131769012@N02/sets/72157653144621418>



Pat Gerstle's award winning display entry is in the center background in the photo to the left. Bill Pausell, far left, is looking at the Roosevelt Hotel display. Rick Cobb's winning steam locomotive entry was pictured on page 2 of last month's *Lantern*.



Above right, Bev Jaquith spent her time at the convention in the Hospitality room. Below, Lou Jaquith and Stew Winstandley on the Norfolk Southern yard tour at Delaplain. Left, Division 10 members, Ron Kercheval, Brian Jones, Tom Krill and Larry Smith in the Company Store.



Above left, Rick Cobb, center, at the Registration Table.



Above right, Nancy and Bruce (convention chairman) DeMaeyer.

THE LANTERN
NEWSLETTER FOR NMRA MCR DIVISION 10

210 BRANNON RD.
NICHOLASVILLE, KY 40356-9711
WWW.DIV10-MCR-NMRA.ORG



JUNE 7, 1:30

BRING AND BRAG

DIESEL LOCOMOTIVE

MEETING AGENDA

BUSINESS MEETING AND
OFFICERS INSTALLATION

TOUR

NONE

AROUND THE BEND

MON.	DAY	HOST	PLACE	EVENT / PROGRAM	TOURS	BRING & BRAG
June	7	Div. 10	Central Christian Church, Watkins Bldg., E. Short Street	Business Meeting	None	Favorite Diesel Locomotive
Aug.	1 (Sat.)	Div. 10	John Bowling 406 N Maple Ave, Danville	Backyard Picnic	John Bowling	
Sept.	6	Div. 10	Central Christian Church, Watkins Bldg., E. Short Street	JMRI Part 2—Mark Underwood		
Oct.	4	Div. 10				
Nov.	1	Div. 10				

The Thoroughbred Limited 2015 convention organization, as set up by **Bruce DeMaeyer**, and the participation by our Division 10 members was outstanding. The convention committee consisted of Stew Winstandley, Tom Krill, Lou Jaquith, Bob Belt, Larry Smith, Brian Jones, John Gorman, Bill Pausell, Bill Robbins, Thomas Bookout, Ed Butcher, Bob Ferguson, Rick Cobb, and Tom Bensberg; with support from other members, we all pulled off a very successful MCR convention.