



THE LANTERN



MAY 2015

VOLUME 17, ISSUE 5

Superintendent's Report

Our April meeting brought a packed room. Thanks to all that attended. Stew Winstandley's clinic on "Running a layout via a PC" was quite interesting. This appears to be the way of our future in Model Railroading. Stew went into thorough detail of how he constructed his layout and explained the materials that he used. He included how to program the layout and to make the trains and signal work with a computer program. After showing a slide presentation on how to program, Stew let the computer operate the trains and signal. They worked for several minutes without a mishap. There were several questions and Stew concluded with the operation of the layout. Thanks Stew for a great clinic.

Bring and Bragg brought 7 entries. The subject was "Your favorite Steam Engine". Yours truly won with a model of Cass Scenic Railroad #5 Shay (photograph on page 3). Thanks to all that participated! A List of the finishing order and current standings are on page 2 of this issue.

Bruce DeMaeyer gave an update on the 2015 convention. We are still on track and have some jobs that need to be filled. If you haven't signed up to help, contact Bruce or any other member to see where you can help out.

Our May Meeting clinic will be conducted by Bruce DeMaeyer on "Building a Snow Shed in Mountain Scenery." Bring and Brag will be "Gondola with a Load." The May tour will be at the home of Bob Belt. Looking forward to seeing you there!

Keeping modeling fun

—Rick Cobb

Assistant Superintendent Ramblings

For the May meeting, Bruce DeMaeyer is previewing his Convention clinic – "Building a Modern Snow Shed to Prototype Design in N." The clinic is a description of the steps taken to build a Great Northern prototype snow shed modeled after the actual sheds still being used by BNSF in Glacier National Park, Montana. The details of building the

surrounding mountain side, mountain stream, waterfalls and rock slide out into the stream will also be presented (see photograph on page 3). A high level description of his modern N scale layout will also be included.

For May, the tour will be at my layout, 702 Gingermill Ln, Lexington. No major changes since a year ago but I did re-adjust one grade to allow longer way freights and modified the backdrop to accommodate a garage appliance change. I've also added several of the 'wire-form' trees and stumps from the October 2014 clinic along with some more detailing to the trees using electro-static flocking (from a Model Railroad Hobbyist idea).

June is wide open – haven't booked either a clinic or tour – any volunteers?

For August, John Bowling will host the Division for a Saturday afternoon special in Danville – this is now firmed up as Saturday, August 1st, from 12-2 PM. No regular Sunday meeting. The idea is to both bring the spouses/guests and a 'brown bag' for lunch. John will be supplying the soft drinks and cookies followed by a tour of John's latest additions to his layout. As a side note, John is going to do a clinic for the Convention on building a craftsman diorama.

The Fall schedule is in development and I hope to get several of the more popular Convention clinicians to present a clinic. No promises, but maybe we can finally get Bob Lawson.

—Bob Belt



Bruce DeMaeyer, left, pouring water on his layout, with Fred Plymale, Larry Smith and Bob Ferguson.



For the NMRA MC Region officers link to www.midcentral-region-nmra.org/bod2.html

The Lantern is a monthly (except July) publication of Division 10, Mid Central Region (MCR), National Model Railroad Association. All opinions expressed herein are those of the authors, and do not necessarily reflect those of Division 10, the MCR, the NMRA, or anyone else.

In Recognition...

Many thanks to folks listed in the column below. They have given their support for our club. We encourage all NMRA members to help with financial support to *The Lantern* and our website and the Division 10 activities. **Send your monetary contribution to our Treasurer.**

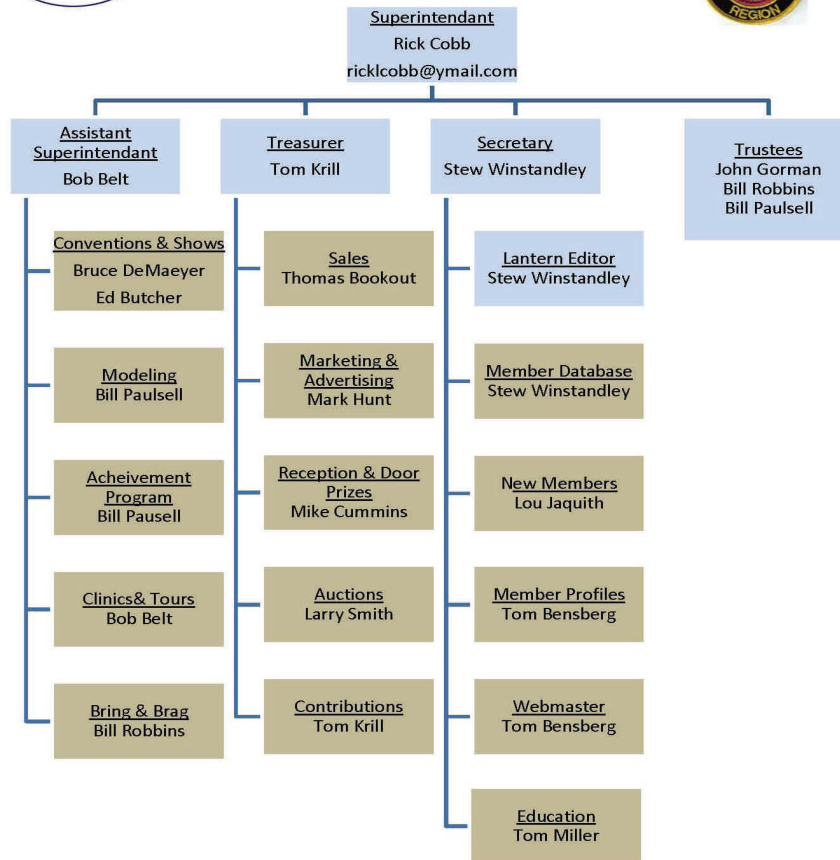
To be listed here your contribution needs to be at least \$20 in cash, or material valued at \$50, or a total of 20 hours time within the last year. Division 10 receives NO monetary support from the NMRA or the MidCentral Region. Div.10 is recognized by the US government as a 501c3 corporation and your cash or material donations may be tax deductible.

Report materials or time to Stew Winstandley. To the right of each contributing member's name is the month of his or her latest contribution. Whenever one makes a contribution of money, material, or time, his or her date will be updated, and for new contributors, their name will be added. Anyone not making a contribution within 12 months will be dropped .

Franklin Miller	1/2015
Alan & Judy Bourne	12/14
Ray & Renee Grosser	12/14
Don Burris	10/14
Lou Jaquith	"
Raymond Cox	"
Bill Paulsell	"
Tom Krill	"
John & Mary Stokes	9/2014
David Battin	7/2014
John Bowling	"
Ed Butcher	"
Henry Sneed	6/2014
Bill Robbins	5/2014
Chester Myers	"
Rick Cobb	"
Randy Coffman	"
Mark Hunt - paper and copying of printed materials	

Organizational Chart

Division 10
Mid-Central Region
National Model Railroad Association
www.div10-mcr-nmra.org



Division 10 Treasurer's Report:

Balance March 1, 2015—\$2403.455; Expenses: Lantern \$19.60;
Deposits: Sales \$5.00; Balance March 31, 2015—\$2388.85

Give or send your contribution to: Tom Krill, 3624 Windfair Ln. Lexington, KY 40515

Bring and Brag

2014-2015 standings: Bill Robbins, 11.5; Dave Battin, 6; Lou Jaquith and Bill Paulsell, 5; Bob Ferguson, 4; Rick Cobb and Bob Belt, 3; Ed Butcher, 2.5; and Don Burris, 1point. Rick Cobb was first, Ed Butcher second, and Lou Jaquith third at the April meeting. Rick's winner is to the right.



Page 3 Commentary

As Rick Cobb mentions in his column on page 1, there has been much progress in the digital operations of model railroads. The NMRA has its DCC standards. Visit the NMRA's web page at <http://www.nmra.com/dcc-working-group>. Due to the small size of my cityscape and my running of trams that cannot be upgraded to DCC, I control my layout with CTI Electronics modules and software, as I demonstrated at the April meeting. DCC locomotives can be integrated into the CTI Electronics Tbrain system by entering your DCC fleet into its fleet roster. Once they're in the database, your DCC locomotives can be controlled by the Train Control Language.

A couple of months ago, Mark Underwood had a clinic on setting up JMRI. That's another system to look into for controlling the model railroad. To me a problem with the possible digital control systems is one, deciding what's best for your layout, and two, getting the hands on experience to make it work. Clinics are great for discussions on system capabilities, but trial and error hands-on is necessary to really understand and to be successful.

In the May meeting, Bruce DeMaeyer will tell us about his scenery developments on his layout. Recently he, with the help of Larry Smith, got his DCC system running locomotives around the layout (see photo below). It will be interesting to see how he'll control his yards and staging area. Arduino has been mentioned for that task. Arduino is another possibility for some digital control of the layout (John Gorman has a convention clinic using an Arduino).

When I look at the clinic list for our May regional convention, I see a number of them involving digital layout control. Check them out and attend the ones in which you're interested.

— *Stew Winstandley*



This photo of part of Bruce DeMaeyer's N scale layout shows the area, in the bottom right, where the snow shed will be located. Bruce will tell us about the shed's construction and the scenic area around it at our meeting, May 3rd. A photograph of Bruce pouring the water, shown on the bottom left above, is on page 1.

THE LANTERN
NEWSLETTER FOR NMRA MCR DIVISION 10

210 BRANNON RD.
NICHOLASVILLE, KY 40356-9711
WWW.DIV10-MCR-NMRA.ORG



MAY 3, 1:30

BRING AND BRAG

GONDOLA WITH A LOAD

MEETING AGENDA

SCRATCH BUILDING A SNOW
SHED—BRUCE DEMAEYER

TOUR

BOB BELT'S HO, 702
GINGERMILL LN, 40209

AROUND THE BEND

MON.	DAY	HOST	PLACE	EVENT / PROGRAM	TOURS	BRING & BRAG
May	3	Div. 10	Central Christian Church, Watkins Bldg., E. Short Street	Building a Snow Shed and surrounding scenery—Bruce DeMaeyer	Bob Belt	Gondola with a load
May	14-17	Div. 10	Campbell House	MCR Convention	Yes	
June	7	Div. 10	Central Christian Church, Watkins Bldg., E. Short Street			Favorite Diesel Locomotive
Aug.	1 (Sat.)	Div. 10	John Bowling 406 N Maple Ave, Danville	Backyard Picnic	John Bowling	
Sept.	6	Div. 10				

Our convention website address is : <http://thoroughbredlimited2015.yolasite.com/> The next planning meeting is May 5th (Cinco de Mayo), 6:30 PM, at the Tates Creek Library. **Registrations for our convention are being accepted online and by mail, the last date for online registration is May 12th.**