



THE LANTERN



APRIL 2015

VOLUME 17, ISSUE 4

Superintendent's Report

Have you ever wondered what is going to happen with our Hobby? When I attend railroad events or railroad shows you hardly see younger people, you mostly see people of my age and older. The one exception is railroad shows that cater to the very small children such as the Great American Railroad show that travels the country with rides and train puzzles to draw them in, but the main attraction is for the older generation to purchase trains and accessories. It appears that we do not have a younger generation coming up to take over the hobby. Some of the reasons that have contributed to this could be the electronic age we live in, other activities and sports, the cost of the hobby, and the lack of interest from parents. I guess your next question is what can I do to help? The Dayton Division has come up with an idea to try and bring younger kids and families into the hobby.

They call it Training Day. Bruce DeMaeyer, Bob Belt and I traveled to Dayton to see for ourselves what this division was doing to promote and draw interest to the hobby and club. We were amazed not only to see how they set up the work day, but the turnout. First we met with Richard Lach and he gave us a brief overview of the Training Day. They had approximately 20 stations or tables that cover most all of the varied aspect of the Hobby. From "How to Build" a layout (they actually build a layout) to how to run your train and everything in between. There was an area where one could run a train around a dog bone.

The training included all sizes of the hobby from Z to Garden scale. It was for everybody; even small kids that could barely see the top of tables were able to run trains. Another aspect to the training day included lunch and drinks for everyone at no charge. Food was provided by the

wives and friends. It was great to see our Dayton friends and how they are promoting the hobby, and getting the next generation excited in model Railroading. Congrats Dayton! I believe that our division is also capable of having a training day. It will take some work but we can do it and let's discuss it soon.

At our March meeting, Mark Underwood's clinic on "Connect your PC to your Layout" was full of awesome information. I believe this is going to be the wave of the future of our hobby. Thanks Mark for your presentation. If you have any questions Mark's email is mark@chfrailroad.net and his website is <http://www.chfrailroad.net/index.html>.

Mark Hunt's home was the site of the tour for March. Thanks Mark for opening up your home and letting us see your layout.

It was nice to see the participation in our Bring and Brag contest. The topic was "Flat Car with Load." There were a lot of great entries and it showed how we have a lot of great modelers in this division. For the results check the bottom of page 2. Thanks to all whom brought an entry.

At our next meeting, the Tour and Clinic will be conducted by Stew Winstandley. The clinic topic will be "Running a Layout via a PC." The hobby has many ways to facilitate digital control of our layouts, from DCC, JRMI, and TCL that will be covered at the April meeting (see the column on page 3 for more on the upcoming clinic). Remember the meeting has been moved to April 12 because of Easter. Looking forward to seeing you there, and bring in your favorite steam locomotive...

Keeping modeling fun

—Rick Cobb

NMRA MCR Convention

May 14-17, 2015 Campbell House, Lexington, Ky.



For the NMRA MC Region officers link to www.midcentral-region-nmra.org/bod2.html

The Lantern is a monthly (except July) publication of Division 10, Mid Central Region (MCR), National Model Railroad Association. All opinions expressed herein are those of the authors, and do not necessarily reflect those of Division 10, the MCR, the NMRA, or anyone else.

In Recognition...

Many thanks to folks listed in the column below. They have given their support for our club. We encourage all NMRA members to help with financial support to *The Lantern* and our website and the Division 10 activities. **Send your monetary contribution to our Treasurer.**

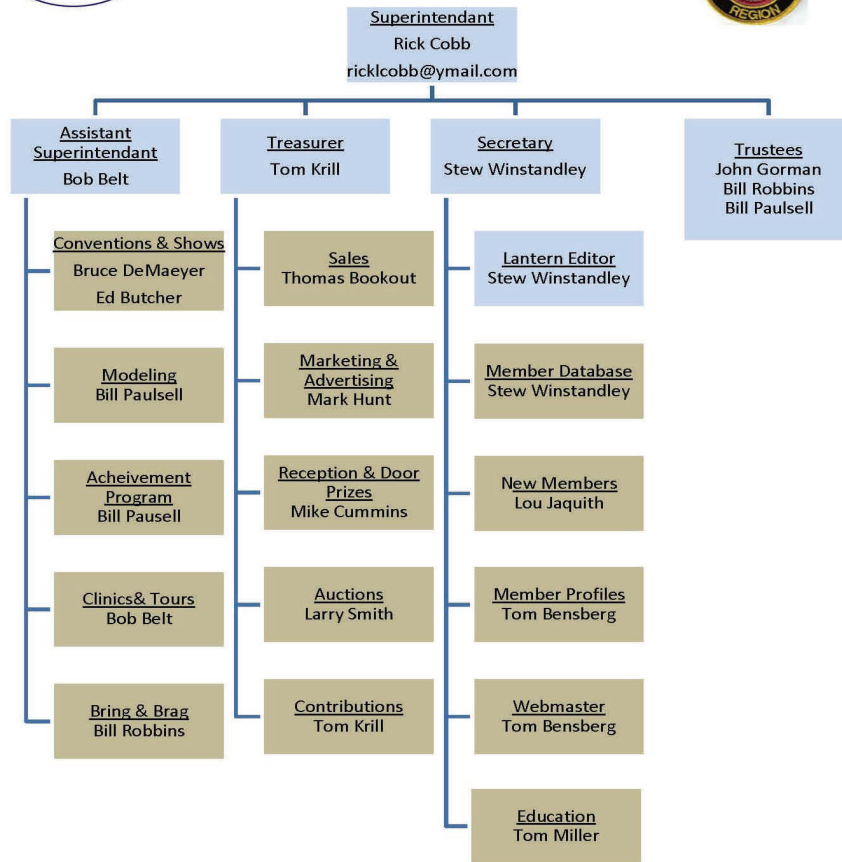
To be listed here your contribution needs to be at least \$20 in cash, or material valued at \$50, or a total of 20 hours time within the last year. Division 10 receives NO monetary support from the NMRA or the MidCentral Region. Div.10 is recognized by the US government as a 501c3 corporation and your cash or material donations may be tax deductible.

Report materials or time to Stew Winstandley. To the right of each contributing member's name is the month of his or her latest contribution. Whenever one makes a contribution of money, material, or time, his or her date will be updated, and for new contributors, their name will be added. Anyone not making a contribution within 12 months will be dropped .

Franklin Miller	1/2015
Alan & Judy Bourne	12/14
Ray & Renee Grosser	12/14
Don Burris	10/14
Lou Jaquith	"
Raymond Cox	"
Bill Paulsell	"
Tom Krill	"
John & Mary Stokes	9/2014
David Battin	7/2014
John Bowling	"
Ed Butcher	"
Henry Sneed	6/2014
Bill Robbins	5/2014
Chester Myers	"
Rick Cobb	"
Randy Coffman	"
Orville Boes	4/2014
Ron Kercheval	4/2014
Paul Evans	3/2014
Mark Hunt - paper and copying of printed materials	

Organizational Chart

Division 10
Mid-Central Region
National Model Railroad Association
www.div10-mcr-nmra.org



Division 10 Treasurer's Report:

Balance February 1, 2015—\$2424.35; Expenses: Lantern \$31.90;
Deposits: Sales \$11.00; Balance February 28, 2015—\$2403.45

Give or send your contribution to: Tom Krill, 3624 Windfair Ln. Lexington, KY 40515

Bring and Brag

2014-2015 standings: Bill Robbins, 11.5; Dave Battin, 6; Bill Paulsell, 5; Bob Ferguson and Lou Jaquith ,4; Bob Belt, 3; Don Burris, 1; and Ed Butcher, .5 point. Bill Paulsell was first, Lou Jaquith second, and Bob Ferguson third at the March meeting. Bill's winning entry is pictured to the right.



Page 3 Commentary

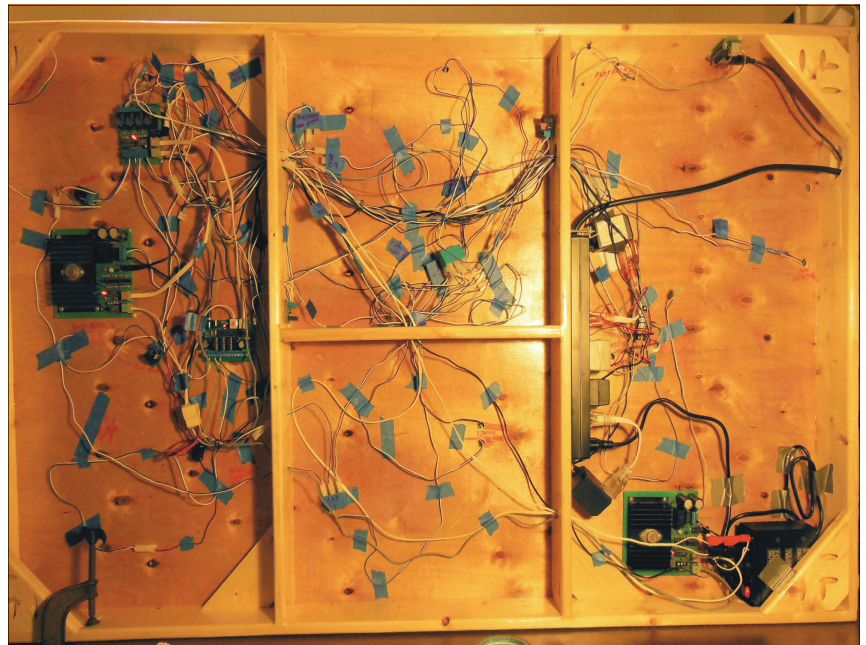
I have served as our division's secretary for over four years. I am not running for re-election, but I have been asked to continue as our *Lantern* editor. I am the current election committee and I have four unopposed candidates for the Division 10 officers. Rick Cobb is running for Superintendent, Bob Belt for Asst. Superintendent, Tom Krill for Treasurer, and Tom Bensberg for Secretary. This election is being held now due to a temporary change to our by-laws that was approved by our members last August. You may read about it in the September 2014 issue of *The Lantern*. The next election will be in 2016.

CTI Electronics
Model Railroading for the 21st Century



One of the topics covered by Mark Underwood at the March meeting was using JMRI in a stand alone mode with a Digitrax PR3. That is one possibility in the use of JRMI with DCC. I have found more information on the website at <http://jmri.sourceforge.net/help/en/html/hardware/loconet/PR3.shtml>. Mark's email address is in Rick's column on page 1.

I have a 5' x 3' N scale layout that I run using the Train Control Language and the network hardware that is available from CTI Electronics. I have seen small advertisements for CTI-Electronics in issues of *Model Railroader* magazine, and I've had their hardware and software for many years. I've also run Z scale with it. To the left you'll see a photo of the underside of my layout. This is one of the worst examples of wiring I've ever seen on a layout, but it works. I built it to this size so it will fit into my vehicle. Hopefully I'll get it to run at our April 12th meeting.



In last month's *Lantern* I wrote about ditch lights on our modern models. A few years ago I rode Via Rail's RDC out of Sudbury, Ontario. The photo below shows the RDC's ditch lights. In the bottom right is a photo of my Kato RDC on which I've used fibre optics attached to the Kato lighting kit to install front ditch lights.

— Stew Winsteadley



THE LANTERN
NEWSLETTER FOR NMRA MCR DIVISION 10

210 BRANNON RD.
NICHOLASVILLE, KY 40356-9711
WWW.DIV10-MCR-NMRA.ORG



APRIL 12, 1:30

BRING AND BRAG

FAVORITE STEAM LOCOMOTIVE

MEETING AGENDA

CTI-ELECTRONICS CONTROLLED
N SCALE LAYOUT—STEW
WINSTANDLEY

TOUR

AT MEETING SITE

AROUND THE BEND

MON.	DAY	HOST	PLACE	EVENT / PROGRAM	TOURS	BRING & BRAG
April	12	Div. 10	Central Christian Church, Watkins Bldg., E. Short Street	Running a layout via a PC and network, Stew Winstandley	Layout at the meeting	Favorite Steam Locomotive
May	3	Div. 10	Central Christian Church, Watkins Bldg., E. Short Street	Building a snow shed in mountain scenery, Bruce DeMaeyer	Bob Belt	Gondola with a load
May	14-17	Div. 10	Campbell House	MCR Convention	Yes	
June	7	Div. 10	Central Christian Church, Watkins Bldg., E. Short Street			Favorite Diesel Locomotive
Aug	1 (Sat.)	Div. 10	John Bowling 406 N Maple Ave, Danville	Backyard Picnic	John Bowling	

Our convention website address is : <http://thoroughbredlimited2015.yolasite.com/> The next planning meeting is April 14th, 6:30 PM, at the Tates Creek Library. **Registrations for our convention are being accepted online and by mail, the last date for online registration is May 12th.**