



# THE LANTERN



MARCH 2015

VOLUME 17, ISSUE 3

## Superintendent's Report

I hope you were able to get out and visit the World's Greatest Hobby on Tour in Louisville. The show featured manufacturers from across our hobby. I enjoyed talking to their representatives and getting the latest scoop on what's new. There were several vendors from other parts of the country that we normally don't see. While walking around we saw members from our division that we hadn't seen in a while, enjoying the exhibits. This show was also about the kids too. The show provided rides and many entertaining exhibits for the youngsters. They even had a running train made completely of Lego's. Track was provided in one area that they could put together and create their own railroad empire. Hopefully our future modelers.

As we move ahead toward the convention in May, all is coming together nicely. Plans are on schedule and the committee chairs continue to work hard to make this convention something our Division will be proud of. If you haven't gotten on board, there is still a lot of work to be done, and we still need volunteers for some areas of the convention. If you can donate a few hours to help out, please contact one of the committee chairs or Bruce DeMaeyer. Help us make this a great convention!

I want to thank Georgia Dahlberg for her clinic on "Building Scenery with USGS Map Reference maps." Great clinic Georgia. It provided information on how to build your scenery with accurate elevations and it provided information on



where to get the maps. Our tour was at the home of George Campbell (see top of page 3). Thank you for your hospitality and allowing us to see your awesome layout. Our Bring and Bragg was a "Favorite House." Check page 2 for the results.

Our March 1<sup>st</sup> program will feature Mark Underwood, JMRI 101, "Connecting your PC to your Layout". This could be the next big movement in our hobby. A lot of Hobbyists are moving in this direction. Mark will present a lot of great info and you will not want to miss this one. Our Bring and Bragg will be a "**Flat Car with a Load**". Our tour will be at the home of Mark Hunt. Looking forward to seeing Mark's layout.

There is a lot of going on at this meeting, make sure you don't get left out!

*Keeping modeling fun*

—Rick Cobb

## Assistant Superintendent Ramblings

For our March 1<sup>st</sup> regular Sunday meeting, Mark Underwood's clinic will look at the basics of setting up JMRI – and specifically how to connect your computer to your layout and getting started. This is the '101' level – a future clinic will delve into the more advanced elements of operation with JMRI. From the website at <http://jmri.sourceforge.net/>, "The JMRI project is building tools for model railroad computer control. We want it to be usable to as many people as possible, so we're building it in Java to run anywhere, and we're trying to make it independent of specific hardware systems. JMRI is intended as a



jumping-off point for hobbyists who want to control their layouts with a computer without having to create an entire system from scratch."

The March tour is to Mark Hunt's HO transition-era layout, specifically 1953. His 10x25 layout uses Digitrax controls and was on tour a couple years ago – before my time. Mark's address is 3516 McNair, Lexington. I'm looking forward to seeing this one.

For April, the regular meeting and 'tour' will be on the 2<sup>nd</sup> Sunday, the 12<sup>th</sup> since the 1<sup>st</sup> Sunday is Easter. Stew Winstandley will show us how he runs his layout via a PC program (TCL) and hardware from CTI-Electronics. There was a photo of his light rail cityscape in the January *Lantern*. This layout is portable and will be at the meeting for the 'tour'.

I've been talking to John Bowling in Danville about doing a Saturday afternoon special – maybe in April. We were there last year in April after the Sunday regular meeting – a bit tight on time for the drive down and back. John has done even more detailing since our last visit – working streetlights! As a side note, John may do a clinic for the Convention on building a craftsman diorama.

I'm still working on a clinic for May – even with our MCR Convention. In the meantime, does anyone want to volunteer? I'm looking into recycling several of the tours and clinics.

For May, the tour will be at my layout. No major changes since a year ago but I did readjust one grade to allow longer way freights. And I've added several of the 'wire-form' trees and stumps from the clinic.

—Bob Belt

## In Recognition...

Many thanks to folks listed in the column below. They have given their support for our club. We encourage all NMRA members to help with financial support to *The Lantern* and our website and the Division 10 activities. **Send your monetary contribution to our Treasurer.**

To be listed here your contribution needs to be at least \$20 in cash, or material valued at \$50, or a total of 20 hours time within the last year. Division 10 receives NO monetary support from the NMRA or the MidCentral Region. Div.10 is recognized by the US government as a 501c3 corporation and your cash or material donations may be tax deductible.

Report materials or time to Stew Winstandley. To the right of each contributing member's name is the month of his or her latest contribution. Whenever one makes a contribution of money, material, or time, his or her date will be updated, and for new contributors, their name will be added. Anyone not making a contribution within 12 months will be dropped .

Franklin Miller	1/2015
Alan & Judy Bourne	12/14
Ray & Renee Grosser	12/14
Don Burris	10/14
Lou Jaquith	"
Raymond Cox	"
Bill Paulsell	"
Tom Krill	"
John & Mary Stokes	9/2014
David Battin	7/2014
John Bowling	"
Ed Butcher	"
Henry Sneed	6/2014
Bill Robbins	5/2014
Chester Myers	"
Rick Cobb	"
Randy Coffman	"
Orville Boes	4/2014
Ron Kercheval	4/2014
Paul Evans	3/2014

Mark Hunt - paper and copying of printed materials

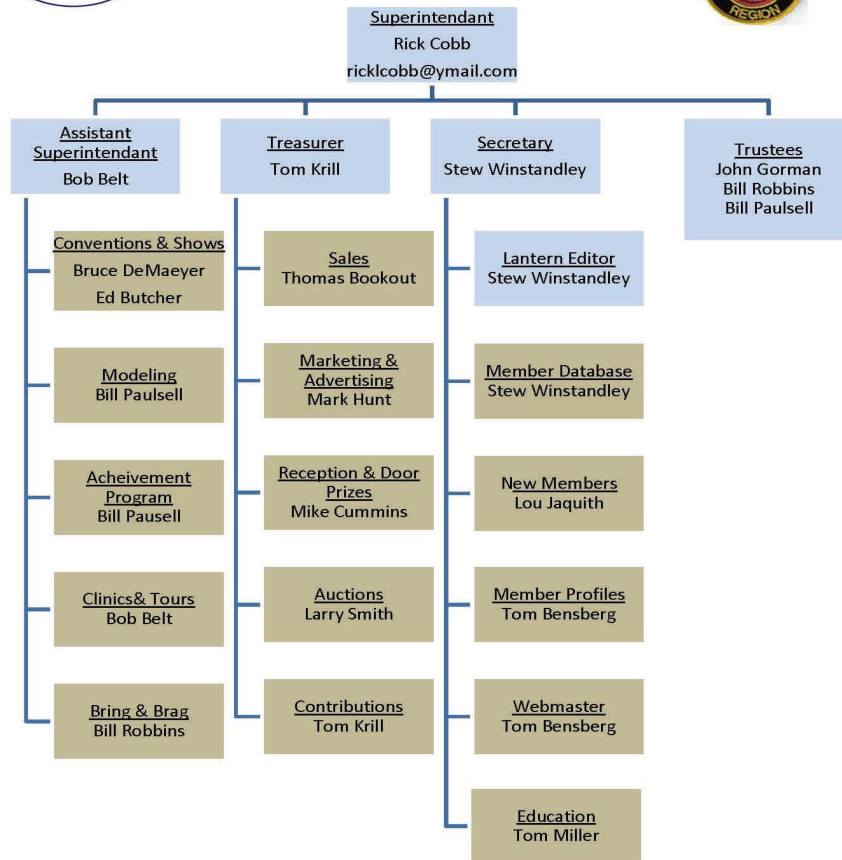


For the NMRA MC Region officers link to [www.midcentral-region-nmra.org/bod2.html](http://www.midcentral-region-nmra.org/bod2.html)

*The Lantern* is a monthly (except July) publication of Division 10, Mid Central Region (MCR), National Model Railroad Association. All opinions expressed herein are those of the authors, and do not necessarily reflect those of Division 10, the MCR, the NMRA, or anyone else.

### Organizational Chart

Division 10  
Mid-Central Region  
National Model Railroad Association  
[www.div10-mcr-nmra.org](http://www.div10-mcr-nmra.org)



### Bring and Brag

2014-2015 standings: Bill Robbins, 11.5; Dave Battin, 6; Bob Ferguson and Bob Belt, 3; Lou Jaquith and Bill Paulsell, 2; Don Burris, 1; and Ed Butcher, .5 point. Bill Robbins was first, Dave Battin second, and Don Burris third at the February meeting.

#### Division 10 Treasurer's Report:

Balance January 1, 2015—\$2427.01; Expenses: Lantern \$41.16, Speaker \$50.00; Deposits: Contributions \$44.00, Sales \$44.50; Balance January 31, 2015—\$2424.35  
Give or send your contribution to: Tom Krill, 3624 Windfair Ln. Lexington, KY 40515



Above left: A couple of golf holes on George Campbell’s HO layout. Right: George’s refinery is a combination of a backdrop and structures. An impressive way to build a plant without using a lot of depth on the layout, but with the result being great scenery. We really appreciated the February layout tour in Winchester.

## Commentary

Last August at the regular Division 10 meeting, the members there voted to extend the term of our current officers until after the May convention. Our superintendent will be appointing a committee to set up a ballot for the next group of officers. Rick Cobb may make an announcement about the election at the March meeting. The next term will run until the normal period that will end in October 2016.

I also went to Louisville, Sunday the 15th, to the WGH train show. Rick wrote about it in his column on page 1. I’m now an N scaler, ex Z, and I saw more N and Z scale stuff at the vendor’s locations than usual. There were also operating N-trak layouts and a T-trak layout on display (<http://www.t-trak.org/>). With so much N scale I didn’t have time to look at the other layouts, but Rick covered that side of the show in his column.

Last month in my “Prototyping Commentary” I compared the Bachmann NS 4270 F7 model to the real NS 4270 F9. Here’s my comparison for this month. A year ago I took the photos below of a CN ES44AC in Lawrenceburg. Notice the ditch lights on the rear. The red light above the right ditch light is on whenever the locomotive is a DPU (helper) on a freight train. That red light is the FRED on the rear. Years ago the model manufactures included front ditch lights on their modern diesel locomotives. They look great. Rear ditch lights on a model would not be necessary since we don’t usually run them long hood forward or on the end of our freight trains as a DPU. Anyone have a diesel locomotive with rear ditch lights?

My cityscape that will be running at the April 12th meeting is now successfully programmed to run one tram (at least I only have one bug to fix). I’m now trying to program it to handle two trams running in my city. This adds quite a bit of code to the Train Control Language (TCL) application. I’m going to be interested in Mark Underwood’s clinic in March on JMRI. My system seems to be more popular in foreign countries, at least many of the Yahoo Group questions come from Australia, New Zealand, Canada, and Great Britain.



— Stew Winstandley

**THE LANTERN**  
NEWSLETTER FOR NMRA MCR DIVISION 10

210 BRANNON RD.  
NICHOLASVILLE, KY 40356-9711  
WWW.DIV10-MCR-NMRA.ORG



*MARCH 1, 1:30*

*BRING AND BRAG*

FLAT CAR WITH A LOAD

*MEETING AGENDA*

JRMI-CONNECTING YOUR PC TO  
YOUR LAYOUT, MARK  
UNDERWOOD

*TOUR*

MARK HUNT, 3516 MCNAIR  
WAY, 40513

**AROUND THE BEND**

MON.	DAY	HOST	PLACE	EVENT / PROGRAM	TOURS	BRING & BRAG
March	1	Div. 10	Central Christian Church, Watkins Bldg., E. Short Street	JMRI 101—Connecting your PC to your layout, Mark Underwood	Mark Hunt	Flat Car with a load
March	21	Div. 8	2919 Bardstown Rd, Highland Post, Louisville	Train Show & Sale. 10—3		
April	12	Div. 10	Central Christian Church, Watkins Bldg., E. Short Street	Running a layout via a PC and network, Stew Winstandley	Layout at the meeting	Favorite Steam Locomotive
May	3	Div. 10	Central Christian Church, Watkins Bldg., E. Short Street			Gondola with a load
May	14-17	Div. 10	Campbell House	MCR Convention	Yes	

Our convention website address is : <http://thoroughbredlimited2015.yolasite.com/> The next planning meeting is March 3rd, 6:30 PM, at the Beaumont Library. Early registration ended January 31st. Registrations for our convention are being accepted online and by mail.