



# THE LANTERN

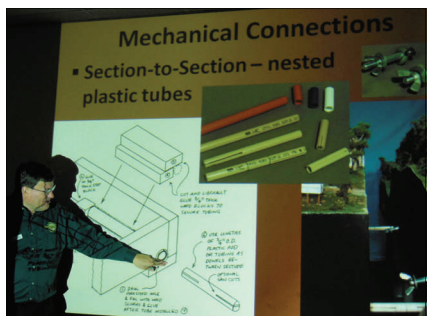


FEBRUARY 2015

VOLUME 17, ISSUE 2

## Superintendent's Report

My thanks goes out to Bob Belt for taking over the throttles during my absence of our January meeting. I hear he did a super job. Thanks again Bob. I want to thank John Burchnall for providing his clinic on the 'Secrets of the Eastern Loggers.' Several members complimented the presentation. I'm sorry I missed it. One of his tips is on page 3. Also a big thank you to Bruce DeMaeyer for opening up his home and letting us see his N scale layout. Thanks Bruce for the tour.



Mike Cummins, our Door Chairman, had to have emergency surgery on Monday, January 12<sup>th</sup>. He is resting and is due to come home in a few days. We hope to see him back involved very soon.

February brings us closer to the 2015 Thoroughbred Limited MCR convention. Down to 4 months and counting with a lot of work and planning still going on. If you haven't registered, the early cutoff is January 31st (see bottom of page 4). At our last meeting, Scott McCoun of Positively Awarding, gave a presentation on the different awards available and provided samples for all to see. He offered several different plaques and providing pricing. Scott also said that he can print names on awards if given a small time frame before banquet. This is a huge plus.

After our January meeting I had several members call about the Bring and Brag contest. I understand that the winner was a diorama and that is against the rules established many months ago. The contest was painted figures or animals. Bill Robbins had chosen this topic so a contestant could show off their talents in painting. The rules that had been set in place and I have to follow them, so the winner has been disqualified. The winner of January is Bob Belt, and Bill Robbins finished second. The current standings are on page 2.

We have a great program on tap for February. Georgia Dahlberg, MMR, will be doing a presentation on 'Building Scenery with USGS Map References.' Our tour will be at the home of George Campbell. Bing and Brag will test your talents with your favorite house, either kit or scratch built.

Looking forward to seeing you there.

*Keeping Modeling Fun*

— Rick Cobb

## Assistant Superintendent Ramblings

For the clinic on February 1st, MMR Georgia Dahlberg, PE, will present 'Building Realistic Foam Scenery with USGS Maps & More'. A short description: Building scenery with USGS maps is a method of scaling down nature to provide us with realistic looking landforms for model railroad use. The objective is to duplicate nature's contours scaled down to our needs in virtually any scale. This will also provide you with some of the cheapest scenery you can envision.

Georgia comes to us from Division 7, but lives in Williamstown, Ky. She regularly presents clinics at Tim's Trains in Covington. By the way, the PE stands for Professional Engineer. The clinic displays are fascinating – I've had the chance to see them.

The February tour will be hosted by George Campbell in Winchester. He was originally scheduled in June of last year but had some serious back problems and surgery. He assures me he is now ready for the tour.

For our March 1st regular Sunday meeting, our own Mark Underwood's clinic will look at the basics of setting up JMRI – and specifically how to connect your computer to your layout and getting started. This is the '101' level – a future clinic will delve into the more advanced elements of operation with JMRI. The tour will be at Mark Hunt's.

For April, the regular meeting will be on the 12<sup>th</sup> since the 5<sup>th</sup> is Easter Sunday. Stew Winstandley will show us how he runs his N scale layout via a PC program. There was a photo of his light rail cityscape on the bottom of page 3 of the January *Lantern*. This layout is portable and will be at the meeting.

Right now, I don't have a tour set for April – anyone want to volunteer? And I'm working on both a tour and a clinic for May 3<sup>rd</sup> – even with our MCR Convention.

—Bob Belt



For the NMRA MC Region officers link to [www.midcentral-region-nmra.org/bod2.html](http://www.midcentral-region-nmra.org/bod2.html)

*The Lantern* is a monthly (except July) publication of Division 10, Mid Central Region (MCR), National Model Railroad Association. All opinions expressed herein are those of the authors, and do not necessarily reflect those of Division 10, the MCR, the NMRA, or anyone else.

## In Recognition...

Many thanks to folks listed in the column below. They have given their support for our club. We encourage all NMRA members to help with financial support to *The Lantern* and our website and the Division 10 activities. **Send your monetary contribution to our Treasurer.**

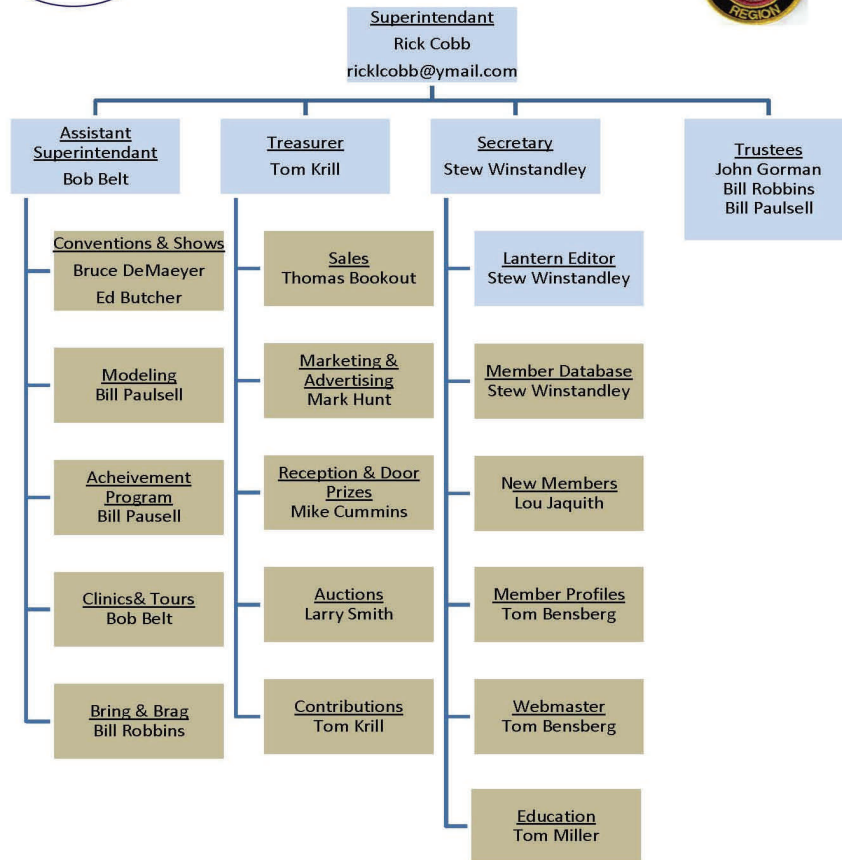
To be listed here your contribution needs to be at least \$20 in cash, or material valued at \$50, or a total of 20 hours time within the last year. Division 10 receives NO monetary support from the NMRA or the MidCentral Region. Div.10 is recognized by the US government as a 501c3 corporation and your cash or material donations may be tax deductible.

Report materials or time to Stew Winstandley. To the right of each contributing member's name is the month of his or her latest contribution. Whenever one makes a contribution of money, material, or time, his or her date will be updated, and for new contributors, their name will be added. Anyone not making a contribution within 12 months will be dropped .

Alan & Judy Bourne	12/14
Ray & Renee Grosser	12/14
Don Burris	10/14
Lou Jaquith	"
Raymond Cox	"
Bill Paulsell	"
Tom Krill	"
John & Mary Stokes	9/2014
David Battin	7/2014
John Bowling	"
Ed Butcher	"
Henry Sneed	6/2014
Bill Robbins	5/2014
Chester Myers	"
Rick Cobb	"
Randy Coffman	"
Orville Boes	4/2014
Ron Kercheval	4/2014
Paul Evans	3/2014
Mark Hunt - paper and copying of printed materials	

### Organizational Chart

Division 10  
Mid-Central Region  
National Model Railroad Association  
[www.div10-mcr-nmra.org](http://www.div10-mcr-nmra.org)



### Bring and Brag

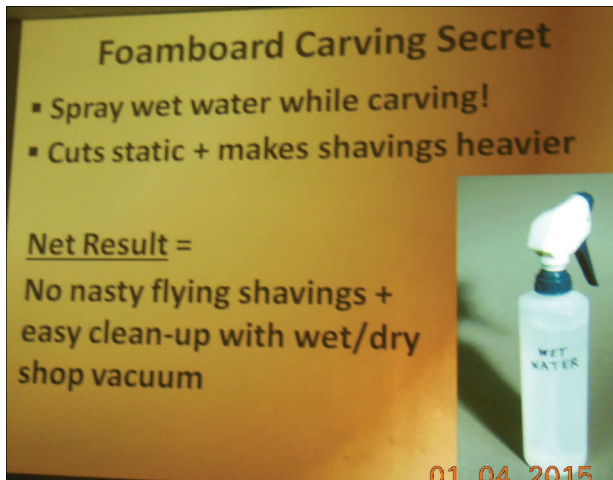
2014-2015 standings: Bill Robbins, 8.5; Dave Battin, 4; Bob Ferguson and Bob Belt, 3; Lou Jaquith and Bill Paulsell, 2; Ed Butcher, .5 point. Bob Belt was 1st, Bill Robbins 2nd at the January meeting.

#### Division 10 Treasurer's Report:

Balance December 1, 2014—\$2381.01; Expenses: Lantern \$0.00; Deposits: Contributions \$30.00, Sales \$16.00; Balance December 31, 2014—\$2427.01

Give or send your contribution to: Tom Krill, 3624 Windfair Ln. Lexington, KY 40515





Scenery on George Campbell's layout, on tour after the Feb. 1st meeting.

John Burchnall's clinic is available at [http://www.cincy-div7.org/EL%20Eng%20Secrets%20v15%20mini%209upBW%](http://www.cincy-div7.org/EL%20Eng%20Secrets%20v15%20mini%209upBW%20)

## Prototyping Commentary

During the frigid first full week of January, I attended Prototype Rails 2015 in comfortable Cocoa Beach, Fla. This was in its 15th year with 262 paid attendees plus manufacturer's representatives and clinicians. This modeling meet had six sessions running simultaneously from Thursday evening until 9:30 Saturday night. In addition there were layouts and models on display. I'm familiar with the many articles in our trade magazines by clinicians Mont Switzer, Tony Koester, and Lance Mindheim. Of course I mention these three since Lance's N scale layout (*2009 Great Model Railroads*) was of the Bloomington, Ind. area of the **MONON**, and his current layout is of a commercial area of Miami. Mont's articles (recent *nmra* magazine and the February 2015 *Model Railroader*) usually show **MONON** rolling stock, and Tony (May 2014 *Model Railroader*) models the Nickle Plate including the Linden, Indiana interchange with the **MONON**. On display was a great modular N layout of the Florida East Coast Railway, and one modular On30.

I attended an interesting clinic on printing white decals with a laser printer put on by Charles Hostetler. Charles has invested a lot of money in an OKI printer and supplies to facilitate the production of white decals, all for his own personal use. The CMY cartridges are replaced by ones with white toner, available from <http://www.ATTTransfer.com/whitetoner.html>. Only the black one remains so that shades of gray are possible (WWWK). Or you may buy an OKI proColor 920WT printer (<http://www.okidata.com/procolor/pro920wt>) for about \$7500.

Mindheim showed photos of the prototype buildings and his models on his Miami layout. It was difficult to tell which were of the prototypes and which were of his layout. One of his comments sticks with me. He said don't string wires on your cantenaries or between your poles. The simulated wiring is never good enough. I have wiring on my cityscape, that I'll have at our April meeting. You'll then be able to criticize what I've done. I would like to do it better, but I like wires.

Another session was on Amtrak prototype consists between 1971-82. Jim Langston, a CSX employee, knows anything and everything about the cars that Amtrak acquired from the railroads, including which model manufacturers did an accurate job of copying the prototypes. If we were modeling that era, he wanted us to get our passenger consists correct.

Since I mentioned accurate models, we've all received our February 2015 issue of the *nmra* magazine, and on page 22 you'll see a photo of Bachmann's F7A NS 4270. I've photographed this locomotive many times on NS's OCS trains. The real one is a F9A and the railroad has added headend power (HEP) at the rear of the unit with a couple of exhaust pipes and a fan that do not exist on the model. The photos are of the model (bottom left) and the real thing (bottom right on page 2). I have a GP38-2 that I painted and decaled for RJ Corman, and I added an air conditioner, antennas, MU cables, cab shades, and ditch lights. The Bachmann F7A (F9A) needs some work.



—Stew Winstandley

**THE LANTERN**  
NEWSLETTER FOR NMRA MCR DIVISION 10

210 BRANNON RD.  
NICHOLASVILLE, KY 40356-9711  
WWW.DIV10-MCR-NMRA.ORG



*FEB. 1, 1:30*

*BRING AND BRAG*

YOUR FAVORITE HOUSE

*MEETING AGENDA*

BUILDING SCENERY WITH USGS  
MAP REFERENCES, GEORGIA  
DAHLBERG MMR

*TOUR*

GEORGE CAMPBELL, 242  
CALMES BLVD., WINCHESTER

**AROUND THE BEND**

MON.	DAY	HOST	PLACE	EVENT / PROGRAM	TOURS	BRING & BRAG
Feb.	1	Div. 10	Central Christian Church, Watkins Bldg., E. Short Street	Building Scenery with USGS Map References, Georgia Dahlberg	George Campbell	Favorite House, kit or scratch built
March	1	Div. 10	Central Christian Church, Watkins Bldg., E. Short Street	JMRI 101—Connecting your PC to your layout, Mark Underwood	Mark Hunt	Flat Car with a load
April	12	Div. 10	Central Christian Church, Watkins Bldg., E. Short Street	Running a layout via a PC program and network, Stew Winstandley	Layout at the meeting	Favorite Steam Locomotive
May	3	Div. 10	Central Christian Church, Watkins Bldg., E. Short Street			Gondola with a load
May	14-16	Div. 10	Campbell House	MCR Convention	Yes	

Our convention website address is : <http://thoroughbredlimited2015.yolasite.com/> The next planning meeting is February 3rd, 6:30 PM, at the Beaumont Library. **Early registration ends January 31st.** If you haven't registered at the lower rate, **registrations for our convention are now being accepted online and by mail.**