



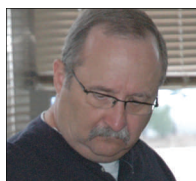
THE LANTERN



DECEMBER 2015

VOLUME 17, ISSUE 12

Superintendent's Report



What a great meeting we had on the 1st of November. Fred Plymale put on an excellent clinic about board on board construction. Fred's power point presentation included several examples and valuable tips. He gave us tips on products that he uses and the benefits over other products on the market. Thank you again Fred for an awesome presentation.

Our tour for November was on Saturday, November 7th. John Bowling graciously invited the Division to visit his layout in Danville, Ky. His massive HO layout is very impressive. If you didn't make it you missed a great opportunity to see this very detailed layout. I was very impressed with all the working traffic lights. Thanks John for your hospitality. We also had the opportunity to visit Ken Dickey's N scale layout while in Danville. Thanks Ken for opening up your home and providing the Division the opportunity to see your layout.

We still have items left from the convention for sale. If you are interested please contact Bob Belt. Some great bargains are still available.

Thanks to Tom Bensburg for bringing Michael Rehorn to our last meeting. Michael is a young man that is very interested in the hobby. As I have said in the past, this is our future that we need to be cultivating and mentoring.

I have talked to the engraver in regards to our Name Badges. He has had to order the blanks and we should have them for our January meeting. If you haven't ordered, please see me to make sure you don't miss out. I will have a list of the members who have ordered a badge. The badge will be gold on black with the Division logo and the member's name and will have a magnet for attachment instead of a pin. The cost is \$8.00.

Keep modeling fun

Rick Cobb

Assistant Superintendent Ramblings

Clinics:

December – Bruce DeMaeyer – Yard Design. This is going to be a discussion of the elements that went into the design of seven yards on his layout – primarily the upper yard. It will also cover conceptual facets of yard operation plans on his layout.

1stQ 2016 Clinics: No change - still working on these. These possibilities remain: Georgia Dahlberg MMR, John Listerman, Lou Jaquith, and Bob Lawson. For 2ndQ I'm continuing to work with several other convention clinicians who had popular clinics that we worker-bees missed.

Tours & Open houses:

December – Nothing.

However, I'm negotiating with the group sales at the EnterTrainment Junction to get a group price for both admission and the VIP backstage tour. Perhaps we can do this a Saturday in the spring as a Division 10 special event.

Nothing for January yet (maybe skip since it is the New Years' weekend?)

Tentatively, Bruce DeMaeyer's for February – to see in person the stuff he will be talking about in the December clinic.

As far as other spring tours & open houses for 2016, Bob Lawson is setting up visits to both his and several other Cincinnati layouts on Saturday, April 16th (3rd Saturday). We should plan on car-pooling up for about 3-4 hours of visits.

Operations:

I chatted with several Division 8 operators and Russ Weiss (Superintendent) about an interchange of operators between their (member) layouts and Div. 10 layouts – perhaps on alternate months. Everybody I talked to was pretty enthusiastic about this. Larry already has several Div. 8 regulars. More to follow.

—**Bob Belt** (bio on page 3)





For the NMRA MC Region officers link to www.midcentral-region-nmra.org/bod2.html

The Lantern is a monthly (except July) publication of Division 10, Mid Central Region (MCR), National Model Railroad Association. All opinions expressed herein are those of the authors, and do not necessarily reflect those of Division 10, the MCR, the NMRA, or anyone else.

In Recognition...

Many thanks to folks listed in the column below. They have given their support for our club. We encourage all NMRA members to help with financial support to *The Lantern* and our website and the Division 10 activities. **Send your monetary contribution to our Treasurer.**

To be listed here your contribution needs to be at least \$20 in cash, or material valued at \$50, or a total of 20 hours time within the last year. Division 10 receives NO monetary support from the NMRA or the MidCentral Region. Div.10 is recognized by the US government as a 501c3 corporation and your cash or material donations may be tax deductible.

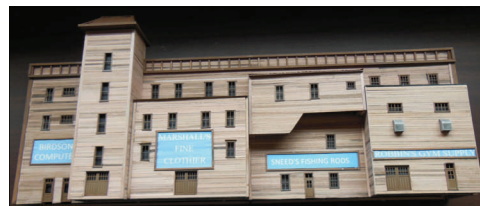
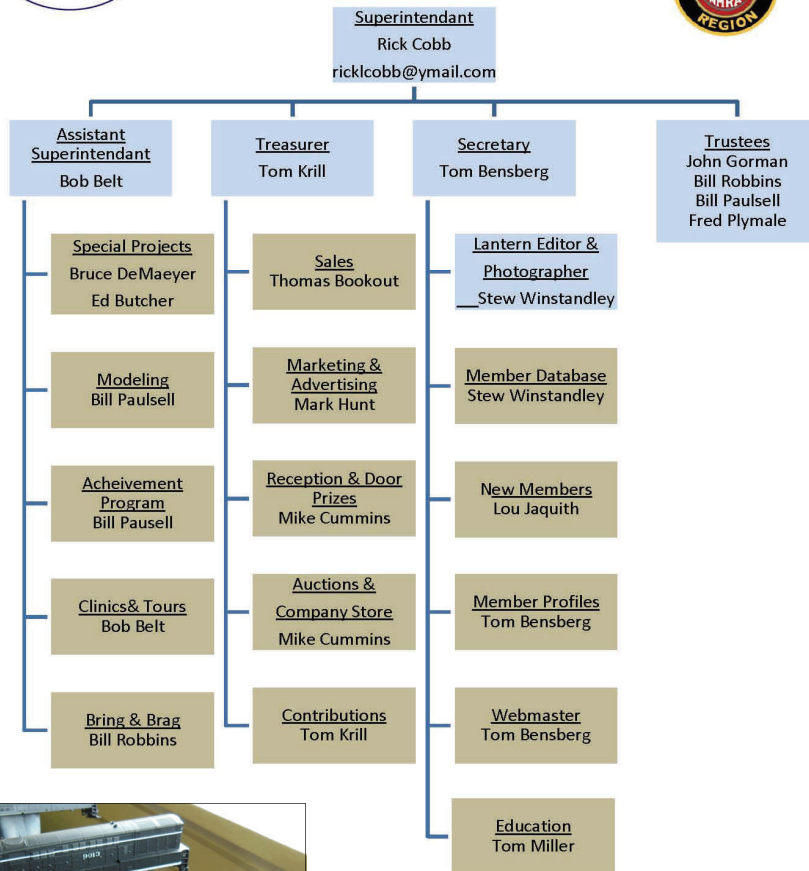
Report materials or time to Stew Winstandley. To the right of each contributing member's name is the month of his or her latest contribution. Whenever one makes a contribution of money, material, or time, his or her date will be updated, and for new contributors, their name will be added. Anyone not making a contribution within 12 months will be dropped .

Lou Jaquith	10/15
Don Burris	8/2015
Dave Battin	"
Paul Evans	"
Henry Sneed Jr.	"
Harold Weinberg	"
John Bowling	9/2015
Randy Coffman	6/2015
Chester Myers	"
Bill Robbins	"
Clyde Burberry	4/2015
Ron Kercheval	"
Franklin Miller	1/2015
Alan & Judy Bourne	12/14
Ray & Renee Grosser	12/14
Raymond Cox	10/14
Bill Paulsell	"
Tom Krill	"
Mark Hunt	- paper and copying of printed materials

Organizational Chart

Division 10
Mid-Central Region
National Model Railroad Association

<http://nmramcrdiv10.yolasite.com/>
7/15/2015



November's Bring and Brag entries:

(top left, clockwise from) Lou Jaquith, Bill Paulsell, Bob Ferguson, and Rick Berg.

Division 10 Treasurer's Report:

Oct. 1, 2015—\$12,773.63;
Expenses: Deposits: Contributions
\$100.00, Sales \$81.00;
Balance Oct. 31, 2015—\$12,954.63

Give or send your contribution to: Tom Krill, 3624 Windfair Ln. Lexington, KY 40515



John Bowling's L&N layout (above and left). Ken Dickey's N scale layout below. Both visited during our November tour.



2015-2016 Bring and Brag Schedule

- December—Diorama with an online structure (judged)
- January—Flat car with load
- February—Open top hopper or a log car
- March—Railroad Car (judged)
- April—Tank car
- May—Kit bashed car (freight, passenger or MOW)
- June—Structure (to be judged)

Member Profile

This month our profile is from **Bob Belt**, our Assistant Superintendent. Bob grew up in Red Oak, Iowa on the main line of the CB&Q.

I fondly remember going up to the depot with dad and watching the Burlington Zephyr stop for passengers. The 'Q' through Red Oak was the ruling grade, single track from the Missouri river to just South of Des Moines. What disappoints me now is that I can't remember which big steam engines were being used for the east bound coal drags. I do remember the plumes of white steam on the sub-zero mornings that I could see through my frosted bedroom windows. My brother had a 3-rail Marx layout in the attic – my first train! I can also remember visiting Bernard Corbin's O gauge basement layout and his scratch-built 'Q' engines – he had one of every model used by the Burlington. He also published several books on the 'Q'.

Then there was about a 20 year hiatus for college and my initial Air Force career. I relit my interest with a craftsman 50' plastic reefer model in Redwood City, California in 1965 – right after my wife and I were married.

My first layout was in a double garage in Palo Alto, CA – the first generation of the Belton & Hurler. As I recall, the layout was patterned after a Model Railroader article. This was my first experience with Hydrocal hard shell scenery. In 1968 we moved to Los Angeles (another Air Force assignment) and the fun of reassembling a 'moved' layout. This became the 2nd generation of the B&H. This one, again in the garage, was much more like the current one except no lift system and we did reserve one stall for the car. And the first dent in the hood from getting too close to one of the support braces for the yard.

This was also my introduction to the NMRA and the Carlywood Model Railroad Club. The club, the Southern Pacific & Nevada (SPAN) was in a back yard building at Bill Webb's house in Lynwood. Bill was also an active live-steamer and ran frequently at Griffith Park with his 7 1/2 "gauge Mountain. One of my fellow members at the club was an operator for Whit Towers so I had the opportunity to visit and operate on his layout. Whit was one of John Allen's good friends and was the editor of the NMRA Bulletin for some years. That fellow club member, Burt Popenga, was a rabid fan of the New Jersey Central and was also a 'rivet counter' – whee, my mentor!! We co-authored an article about scratch-building a refrigerator car but, although submitted to Model Railroader in 1970, it was never published. By the way, this same car (actually 2) got merit awards in our Thoroughbred Limited 2015 MCR convention. I supplemented those cars with complete, scratch-built, 'K' system brake detail for the contest.

We moved to Virginia (another AF assignment) in 1972. Unfortunately, the house didn't have a garage (a carport), but it did have a concrete floored crawlspace. The 2nd generation layout didn't survive the move from California. I managed to set up a 16' yard featuring a passenger operation. A bit cramped with a 4' ceiling – and access was really crawling – through a hatch in the basement wall! Just enough height so a chair with casters allowed head clearance.

We moved again to Centerville, Ohio in 1979. The 16' foot yard survived the move and was placed in the basement. Somewhere along the way, my NMRA membership lapsed and I really didn't do much modeling other than armchair. However, I managed to visit a number of layouts in the Dayton area including W. Allen McClelland's V&O in Miamisburg. WOW!

After retiring from the Air Force, we moved to Lexington in 1995 and I started the 3rd generation B&H, again in the garage, but this time with the lift system (I couldn't stand the 4' of empty space above the garage door). I pretty much 'lone-wolfed' the modeling until early 2010 when I rediscovered NMRA and Div10. Then things got a lot more interesting. Pete Birdsong encouraged me and I went for and got the Golden Spike. Then shortly after that, I was awarded both the AP Civil and AP Electrical certificates. Then Rick asked me to assume the Assistant Superintendent's job and Bruce asked me to Chair the clinics for the 2015 MCR convention. That was a rewarding, albeit busy time. The major reward to me was making the contacts in the both the MCR and other regions to supplement the friendships I've made here in Division 10.

THE LANTERN

NEWSLETTER FOR NMRA MCR DIVISION 10

210 BRANNON RD.
NICHOLASVILLE, KY 40356-9711
WWW.DIV10-MCR-NMRA.ORG



DEC. 6, 1:30

BRING AND BRAG

DIORAMA WITH AN ONLINE
STRUCTURE (WITH FORM #901)

MEETING AGENDA

BRUCE DEMAEYER—BUILDING A
MODERN YARD - DESIGNED FOR
OPERATIONS

TOUR

NONE

AROUND THE BEND

MON.	DAY	HOST	PLACE	EVENT / PROGRAM	TOURS	BRING & BRAG
Dec.	6	Div. 10	Central Christian Church, Watkins Bldg., E. Short Street	Building a Modern Yard - Designed for Operations—Bruce DeMaeyer	None	Diorama with an online structure (judged)
Jan.	3	Div. 10	Central Christian Church, Watkins Bldg., E. Short Street		None	Flat Car with load
Feb.	7	Div. 10	Central Christian Church, Watkins Bldg., E. Short Street			Open top hopper or a Log car
March	6	Div. 10	Central Christian Church, Watkins Bldg., E. Short Street			Car (judged)
April	3	Div. 10	Central Christian Church, Watkins Bldg., E. Short Street			Tank Car

For entries that are to be judged (December, March and June) fill out NMRA Form #901 that is available online at:

http://www.nmra.org/sites/default/files/nmra_contest_entry_form.pdf