



THE LANTERN



NOVEMBER 2015

VOLUME 17, ISSUE 11

Superintendent's Report

I begin this edition of *The Lantern* on a sad note. The MCR and Division 10 lost a lifetime member. William Hammer passed away in Lexington on September 17, 2015 at the age of 92. He was an avid model railroader and was a life member of the NMRA. He served on several groups, including as Legal Counsel from 1963 to 1976 and again from 1985 until 1998, the regional trustee for the Mid-East region on the National Board of Trustees, Eastern Vice President of the association from 1969 to 1971 and later as the Executive Vice President of the association. He was awarded the three highest awards from the association, the President's Award, Distinguished Service Award and the Honorary Life Member. He was a Master Model Railroader.

I want to say thanks to Bob Belt for handling my duties in my absence. Thank you for handling the October meeting and attending the MCR Regional Board meeting in Columbus, Ohio.

As our attention turns to the division, we have many activities and projects in the works. Hopefully, you are able to get on board with some of these projects and help the division grow stronger. I would like to thank some of the people that have been so generous with their time to work on these projects. Thanks go out to Bruce Demaeyer, Bob Belt, and Mark Underwood. Everyone's help is greatly appreciated.

Thanks to Tom Miller in arranging the October tour of the Arboretum. I Wish I could have been here to see it. Hope all enjoyed the visit (photo on page 2).

Don't forget our first diorama of the year is in December. Great topic, "On-line Structure".

I hope to see everyone at the upcoming meeting.

Keep modeling fun

Rick Cobb

Assistant Superintendent Ramblings

Clinics: Nov 1 – Fred Plymale – Board on Board Construction, Tools and Tips.

Dec 6 – Bruce DeMaeyer – Yard Design. This is going to be a discussion of the elements that went into the design of seven yards on his layout. It will also cover conceptual facets of yard operation plans on his layout. This isn't a preview for his clinic for the 2016 National in Indianapolis. Hope to schedule that clinic in the Spring before the National in July.

I'd like to get Division 10 to the point where we have at least 6 months of Clinics and Tours scheduled like Division 7 (Cincinnati) does. Would you believe that they have all of 2016 on a schedule already! Yeah, I know they have a lot more active members and many more great layouts.

1st Quarter 2016 Clinics: Still working on these. These possibilities remain: Georgia Dahlberg MMR, John Listerman, Lou Jaquith, and Bob Lawson. I'm continuing to work with several other Convention clinicians for 2nd Quarter.

Tours & Open houses: For November, we have a special SATURDAY tour on November 7th from Noon to 2 PM at John Bowling's in Danville. We did this to allow travel time – and also since the 1st Sunday Division 10 meeting is on the 1st. I'll have maps at our regular meeting. His address is on page 4.

December – No prospects yet. Second thoughts – how about doing the EnterTrainment Junction on Saturday the 5th (weather permitting)? I had an opportunity to chat with several folks at the Lakota show about the EnterTrainment Junction – we did this a couple years back and I've had several requests to do it again. One of the hints was to ask for the behind-the-scenes tour and for the group discount. I now have a contact there.

As far as Spring tours & open houses for 2016, Bob Lawson is setting up visits to both his and several other Cincinnati layouts on Saturday, April 16th. We should plan on car-pooling up for about 3-4 hours of visits.

What are your thoughts about re-visiting some of our Division 10 layouts that we haven't seen in a couple years? Are there any non-NMRA layouts that might be available for open houses? I'm getting sort of burned out for suggestions. How about another walking tour with Charles Bogart? Those of us who went to Frankfort really learned a lot about Kentucky railroading .

—Bob Belt

In Recognition...

Many thanks to folks listed in the column below. They have given their support for our club. We encourage all NMRA members to help with financial support to *The Lantern* and our website and the Division 10 activities. **Send your monetary contribution to our Treasurer.**

To be listed here your contribution needs to be at least \$20 in cash, or material valued at \$50, or a total of 20 hours time within the last year. Division 10 receives NO monetary support from the NMRA or the MidCentral Region. Div.10 is recognized by the US government as a 501c3 corporation and your cash or material donations may be tax deductible.

Report materials or time to Stew Winstandley. To the right of each contributing member's name is the month of his or her latest contribution. Whenever one makes a contribution of money, material, or time, his or her date will be updated, and for new contributors, their name will be added. Anyone not making a contribution within 12 months will be dropped .

Don Burris	8/2015
Dave Battin	"
Paul Evans	"
Henry Sneed Jr.	"
Harold Weinberg	"
John Bowling	9/2015
Randy Coffman	6/2015
Chester Myers	"
Bill Robbins	"
Clyde Burberry	4/2015
Ron Kercheval	"
Franklin Miller	1/2015
Alan & Judy Bourne	12/14
Ray & Renee Grosser	12/14
Lou Jaquith	10/14
Raymond Cox	"
Bill Paulsell	"
Tom Krill	"
Mark Hunt	- paper and copying of printed materials

Division 10 Treasurer's Report:

Sept.1, 2015—**\$12,955.42**;
 Expenses: Lantern \$41.16, Awards \$20.00, Food 229.63;
 Deposits: Contributions \$105.00, Sales \$4.00;
 Balance Sept. 30, 2015—**\$12,773.63**
 Give or send your contribution to: Tom Krill, 3624 Windfair Ln. Lexington, KY 40515



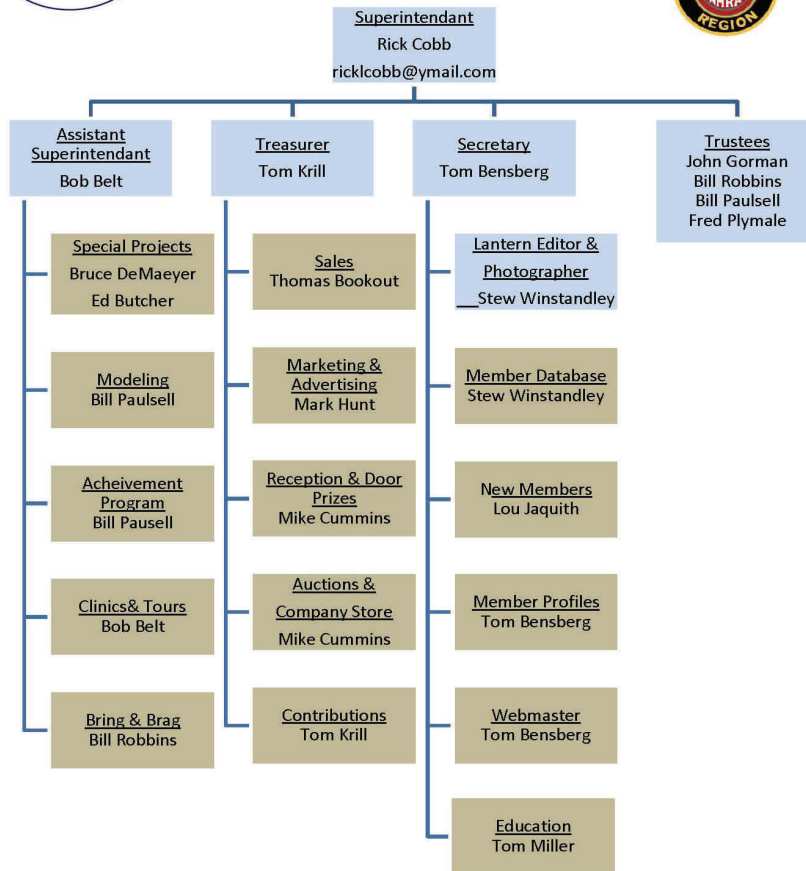
For the NMRA MC Region officers link to www.midcentral-region-nmra.org/bod2.html

The Lantern is a monthly (except July) publication of Division 10, Mid Central Region (MCR), National Model Railroad Association. All opinions expressed herein are those of the authors, and do not necessarily reflect those of Division 10, the MCR, the NMRA, or anyone else.

Organizational Chart

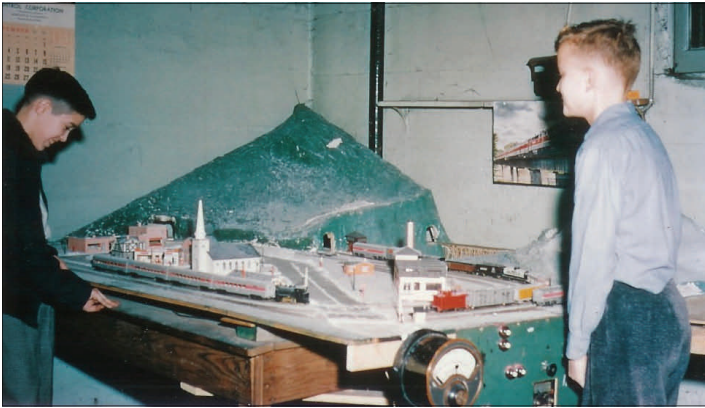
Division 10
 Mid-Central Region
 National Model Railroad Association

<http://nmramcrdiv10.yolasite.com/>
 7/15/2015



Right: Division 10 members on the tour of the garden railroad in the UK Arboretum, October 4th. Photo by Tom Miller.





Member Profile

This month our profile is about Stew Winstandley, our past Secretary and for many years, our current *Lantern* publisher. Stew joined the NMRA in October 2004, a few months after his retirement from 34 years with The Jockey Club. At that time, and until a few years ago, he had an N scale double track around a sun room above the windows and doors on the rear of his house. Then in building a diorama for a Division 10 contest, he switched to Z scale. A second diorama in Z scale was made the next year of an Indiana limestone quarry (middle photo), which is now on display in the museum at the Salem, Indiana Depot. He also has a small Z scale layout with an oval track, but has had little success in running Z equipment. Therefore his latest attempt at modeling is back to N scale. With limited layout space, he built an N cityscape that is 5' x 3', which is the size that can be transported in his vehicle. The cityscape has been operated at a Division 10 clinic, and at the MCR convention this past May. The cityscape was built using mostly Kato Unitram stuff running a couple of street running Kato trams controlled by hardware and software from CTI Electronics.

Stew's career, since graduating from UK and EKU and a couple of years in the US Army, has been in computer programming. In fact, since retirement, he is still doing some part time programming for The Jockey Club Technology Services. His interest in software development is what got him into writing software to run model trains. CTI Electronics has everything necessary to automate a layout. The original N scale track, his Z scale attempts, and his current cityscape have all been controlled by a computer interface and software. He does not yet have any DCC experience, but the Train Control Language from CTI Electronics can be integrated with DCC. Without any space to expand his cityscape, this will not happen at home.

In addition to Stew's NMRA membership, he also belongs to the **MONON** RR Historical Technical Society and the **FLORIDA EAST COAST** Railway Society. His childhood HO layout ran **MONON** equipment. The top photograph in the left column shows his layout in 1952. He is the kid on the right, with a neighborhood friend on the left. Notice the **MONON** poster over the layout, and the **MONON** passenger cars on the front track. His grandparents home was within a block of the **MONON** railroad in New Albany, Indiana, so time spent at their house included viewing the trains going through that city. With some railroads having locomotives painted for their heritage systems, he has created his personal **MONON** heritage SD90. His membership in the **FEC** society comes from an interest in modern day modeling and railfanning. The **FEC** is soon going to test fueling their locomotives with a 80/20 mixture of natural gas and diesel, with the natural gas supplied from a liquified natural gas (LNG) tender between their two GE ES44C4 locomotives. Stew has an N scale well car and plans on modeling the **FEC** LNG tender, as shown in transit in the bottom photo in the left column.

2015-2016 Bring and Brag Schedule

- November—Modelers choice
- December—Diorama with an online structure (judged)
- January—Flat car with load
- February—Open top hopper or a log car
- March—Diorama with a commercial structure (judged)
- April—Tank car
- May—Kit bashed car (freight, passenger or MOW)
- June—Diorama with track side activity (to be judged)

THE LANTERN
NEWSLETTER FOR NMRA MCR DIVISION 10

210 BRANNON RD.
NICHOLASVILLE, KY 40356-9711
WWW.DIV10-MCR-NMRA.ORG



Nov. 1, 1:30

BRING AND BRAG

MODELERS CHOICE

MEETING AGENDA

FRED PLYMALE—BOARD ON
BOARD CONSTRUCTION, TOOLS
& TIPS

TOUR

JOHN BOWLING, NOON-2, SAT.
NOV. 7TH, 406 N MAPLE AVE.
DANVILLE, KY.

AROUND THE BEND

MON.	DAY	HOST	PLACE	EVENT / PROGRAM	TOURS	BRING & BRAG
Nov.	1	Div. 10	Central Christian Church, Watkins Bldg., E. Short Street	Board on Board Construction—Fred Plymale	John Bowling, noon-2, Sat. Nov. 7 Danville, Ky.	Modelers Choice
Nov.	21	Div. 8	Moose Lodge 5, 4615 Fegenbush Ln, Louisville, Ky.	Div8-mcr-nmra.org/site/html/trainshow.html		
Dec.	6	Div. 10	Central Christian Church, Watkins Bldg., E. Short Street	Model Railroad Yard Design—Bruce DeMaeyer		Diorama with an online structure
Jan.	3	Div. 10	Central Christian Church, Watkins Bldg., E. Short Street			Flat Car with Load
Feb.	7	Div. 10	Central Christian Church, Watkins Bldg., E. Short Street			Open top hopper or a Log car

Dayton Train Show, November 7 & 8, 11 AM—4 PM, Hara Arena, 1001 Shiloh Springs Rd, Dayton, Ohio

<http://www.daytontrainshow.com/>