



# THE LANTERN



JANUARY 2015

VOLUME 17, ISSUE 1

## Superintendent's Report

I hope everyone has had a wonderful Christmas with family and friends. We sure did at my house. It is a great time to celebrate the season and a time to reflect on the year past.

Our year has ended on a sad note with the loss of two of our local members of the Mid Central Region. Orville Boes, member of Division 10, died Saturday, December 6<sup>th</sup>. He was born in Louisville, Ky. and was a decorated WWII veteran of the US Army Air Corps. Orville was a graduate of Louisville Male High School, Georgetown College, and the University of Kentucky. He taught at Berea College for 40 years. Orville was also an avid railroad modeler and railfan. I remember our last visit to Orville's home for a monthly tour. His family was so gracious and Orville was excited to see everyone there.

We also lost Jerry Ashley on Sunday, December 7<sup>th</sup>. Jerry was a retired terminal operator for Chevron USA and was a member of the K & I Train Club and the National Model Railroad Association. One of his greatest accomplishments was that he was a Master Model Railroader. Jerry was the facilitator of our program in May. His program was on weathering, and now we will reflect that it was our last opportunity to learn from Jerry. Both of the gentlemen will be greatly missed in the Region and Divisions.

Our program for December was the Trail Contest Judging. Our Members got the chance to get their models prejudged and some members also had a chance to work on their judging skills. While the judging was going on the rest of our members enjoyed a video on the history of Doug Tagsold's D&RGW Silverton Branch. Since this was our first time for the members to get a chance to judge, we wanted to review with the members what took place but we ran out of time. Photographs of the four entries are on page 3. If we do this again, we might change the way it is done and let everyone hear the judges and their comments as they judge.

Our Bring and Brag topic was a MOW Train and four cars. Bob Ferguson was 1st with Bill Robbins 2nd, and Ed Butcher and Bill Pausell tied for 3rd. Bill Robbins leads overall.

Our tour was at the home of Lou Jaquith. Lou has made some changes and it was good to see his awesome HO layout.

On down the tracks, our January 4<sup>th</sup> program will feature "Secrets of the Eastern Loggers" presented by John Burchnall. I know you will not want to miss this presentation. Our Bring and Brag topic will be 6 hand painted figures or animals. Get the year started off by attending our January 4<sup>th</sup> monthly meeting. Looking forward to seeing you there.

*Keeping Modeling Fun*

— Rick Cobb

## Assistant Superintendent Ramblings

For our January 4, 2015 regular Sunday meeting we will have a narrow gauge clinic by John Burchnall – 'Secrets of Eastern Loggers' – that he gave at the Kansas City 34<sup>th</sup> Annual Narrow Gauge Convention in 2014. This is a reschedule from the October meeting (more on page 3). Bruce DeMaeyer will host the tour for January to show us his layout's progress. Bring in your surplus stuff to Larry Smith for our Division's sales.

The February clinic will be Georgia Dahlberg MMR on 'Building Scenery with USGS Map references'. Georgia is a Division 7 member and I've seen both her layout and the material and demonstrations she uses in this clinic. This clinic is one not to miss!

For March, Mark Underwood will be previewing his Convention Clinic: 'JMRI 101 – Connecting Your Computer to Your Layout'. The abstract is: 'How to hook up the computer to the layout and the initial JMRI setup – Part 1 of a series'. I've asked Mark to pretty much start at the beginning and walk us, who are computer simpletons, through the process of getting started in computer operation for model railroads. More on April 12<sup>th</sup>.

George Campbell will host the February tour, and Mark Hunt will have us in March.

Clinic and Tours for 2015 are in the works. The ones for May are pretty well washed out because of the Convention – but June is available.

—Bob Belt



Bob Ferguson's winning Bring & Brag MOW entry in December.



For the NMRA MC Region officers link to [www.midcentral-region-nmra.org/bod2.html](http://www.midcentral-region-nmra.org/bod2.html)

*The Lantern* is a monthly (except July) publication of Division 10, Mid Central Region (MCR), National Model Railroad Association. All opinions expressed herein are those of the authors, and do not necessarily reflect those of Division 10, the MCR, the NMRA, or anyone else.

## In Recognition...

Many thanks to folks listed in the column below. They have given their support for our club. We encourage all NMRA members to help with financial support to *The Lantern* and our website and the Division 10 activities. **Send your monetary contribution to our Treasurer.**

To be listed here your contribution needs to be at least \$20 in cash, or material valued at \$50, or a total of 20 hours time within the last year. Division 10 receives NO monetary support from the NMRA or the MidCentral Region. Div.10 is recognized by the US government as a 501c3 corporation and your cash or material donations may be tax deductible.

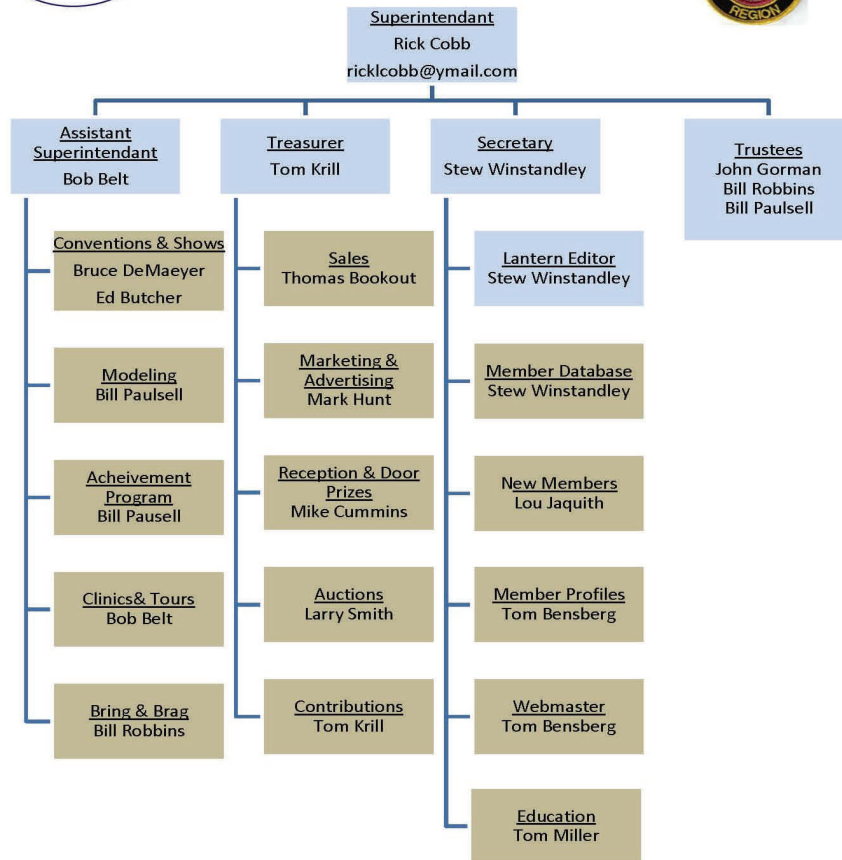
Report materials or time to Stew Winstandley. To the right of each contributing member's name is the month of his or her latest contribution. Whenever one makes a contribution of money, material, or time, his or her date will be updated, and for new contributors, their name will be added. Anyone not making a contribution within 12 months will be dropped.

Ray & Renee Grosser	12/14
Don Burris	10/14
Lou Jaquith	"
Raymond Cox	"
Bill Paulsell	"
Tom Krill	"
John Stokes	9/2014
David Battin	7/2014
John Bowling	"
Ed Butcher	"
Henry Sneed	6/2014
Bill Robbins	5/2014
Chester Myers	"
Rick Cobb	"
Randy Coffman	"
Orville Boes	4/2014
Ron Kercheval	4/2014
Paul Evans	3/2014
Franklin Miller	12/13

Mark Hunt - paper and copying of printed materials

### Organizational Chart

Division 10  
Mid-Central Region  
National Model Railroad Association  
[www.div10-mcr-nmra.org](http://www.div10-mcr-nmra.org)



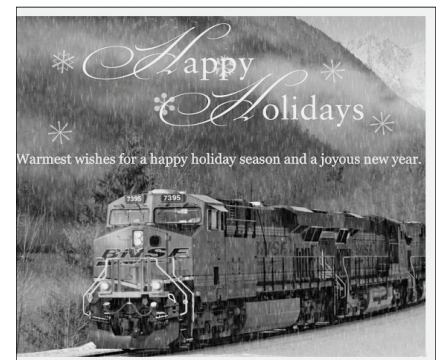
### Bring and Brag

2014-2015 standings: Bill Robbins, 6.5; Dave Battin, 4; Bob Ferguson, 3; Lou Jaquith and Bill Paulsell, 2; Ed Butcher, .5 point. Bob Ferguson was 1st, Bill Robbins 2nd, and Ed Butcher and Bill Paulsell tied for third with MOW at the December meeting.

#### Division 10 Treasurer's Report:

Balance November 1, 2014—\$2420.21; Expenses: Lantern \$39.20; Deposits: Contributions \$0.00, Balance November 30, 2014—\$2381.01

Give or send your contribution to: Tom Krill, 3624 Windfair Ln. Lexington, KY 40515





## Engineering Secrets of the Eastern Loggers (January 4th, Division 10 clinic)

by John Burchnall, Cincinnati, Ohio (reprinted from the October issue of *The Lantern*)

See techniques and features engineered by the Eastern Loggers to create their unique sectional HO/HOn3 layout depicting Pennsylvania Logging in the 1920's. These re-applicable items are key to the **portability, durability, operation and presentation** of the layout. Included are many useful and interesting pioneering methods encompassing **Layout Connections** (both electrical and mechanical), **Ease of Construction and Operation, Portability and Appearance**. Investigating, designing and building these successful items is a source of much enjoyment in this wonderful hobby of model railroading.

John is a retired Professional Engineer, and a founding member of the Eastern Loggers modeling group. He is a lifetime model railroader and railroad and technology enthusiast, and is very active in the NMRA and Cincinnati Division 7. As a teenager John worked in the hobby in both manufacturing and retail. He enjoys most every aspect of our incredible hobby, including photography, research, scenery and design. He has publication credits in several model railroading magazines.

**The Eastern Loggers** - The Eastern Loggers are an informal group of modelers with the primary purpose of promoting the hobby of scale model railroading through modeling and sharing the history of Pennsylvania logging railroads and related industry. Their major focus is the research, development, and exhibition of their "museum quality" portable layout. Other family members participate in social activities, as well as pitching in on layout set up, staffing, and take down activities. Additional information is in the October 2014 issue of *The Lantern*.



Entries in our December 'Contest Judging' (clockwise from top left to above left)

Bob Belt entered his Freight House and Workshop, shown above with the roof removed, Larry Smith brought in his Small Yard Office, Tom Krill had judged a Narrow Gauge Passenger Car, and Bill Paulsell his Railroaders Hotel. These are examples of the outstanding work done by members of Division 10.

To the right is the cityscape light rail line that will be run by a computer at the April 12th meeting (note the date change).



**THE LANTERN**  
NEWSLETTER FOR NMRA MCR DIVISION 10

210 BRANNON RD.  
NICHOLASVILLE, KY 40356-9711  
WWW.DIV10-MCR-NMRA.ORG



*JAN. 4, 1:30*

*BRING AND BRAG*

HAND PAINTED FIGURES

*MEETING AGENDA*

EASTERN LOGGERS, JOHN  
BURCHNALL

*TOUR*

BRUCE DEMAAYER'S N, 1120  
KIDDS MILL RD., WOODFORD  
COUNTY, 40383

**AROUND THE BEND**

MON.	DAY	HOST	PLACE	EVENT / PROGRAM	TOURS	BRING & BRAG
Jan.	4	Div. 10	Central Christian Church, Watkins Bldg., E. Short Street	Secrets of Eastern Loggers, John Burchnall	Bruce DeMaeyer	Six hand painted figures, people or animals, any scale
Feb.	1	Div. 10	Central Christian Church, Watkins Bldg., E. Short Street	Building Scenery with USGS Map references, Georgia Dahlberg MMR	George Campbell	Favorite House, kit or scratch built
March	1	Div. 10	Central Christian Church, Watkins Bldg., E. Short Street	JMRI 101—Connecting your PC to your layout, Mark Underwood	Mark Hunt	Flat Car with a load
April	12	Div. 10	Central Christian Church, Watkins Bldg., E. Short Street	Running a layout via a PC program and network, Stew Winstandley		Favorite Steam Locomotive
May	3	Div. 10	Central Christian Church, Watkins Bldg., E. Short Street	Our convention is May 14-16		Gondola with a load

Our convention website address is : <http://thoroughbredlimited2015.yolasite.com/> The next planning meeting is January 6th, 6:30 PM, at the Beaumont Library. Less than six months until the convention. If you haven't registered at the lower rate, **registrations for our convention are now being accepted online and by mail.**