



JUNE 2014

VOLUME 16, ISSUE 6

Superintendent's Report

As I write this month's column, I'm reminded that change is all around us. Our numbers will change as one of our members leaves for California. He heard there was a big gold rush, I tried to tell him that was years ago. Good luck Pete, you will greatly be missed.

Great turnout for our May meeting. Jerry Ashley provided an outstanding clinic on weathering with powders. He described several techniques that he uses and I hope to try a few soon. Thanks Jerry!



Larry Smith, MMR (left) recently received his MMR plaque. Bob Belt placed first in the Bring and Brag with his outhouse (right).



Our tour was at Alan Brock's home and he has a great □□□□□ layout. I hope you had a chance to see it.

For our June meeting, Bob Weinheimer, MMR, will conduct a clinic, "Getting Started with Operations". We will also have a special guest. Merlyn Jarmen, Mid-Central Region President will be in attendance. Please plan to attend and hear what Merlyn has to report from the region.

— Rick Cobb

A FAREWELL TRIBUTE TO PETE BIRDSONG, MMR

I met Pete for the first time in October, 1999 at his home to get his signature on a petition of local NMRA members to leave Div. 8 and reactivate Division 10 in Lexington. After signing he took me to his basement and showed me his very impressive N-scale layout. At that time I never knew how far we would travel together and how important his leadership and skill would be to the development of our division.

At our first formal meeting it was decided we needed a newsletter to communicate with our members. Pete immediately said "I can do that" and he became our first Secretary. We did have a minor disagreement over the name of the newsletter. Pete's grandfather was an engineer on the Wabash railroad and Pete wanted to call it "The Cannonball". I thought that sounded more like a Civil War newsletter while

The Lantern would enlighten us as novice model railroaders. Pete accepted this important assignment and our first "Lantern" was six full pages. I suggest you go to the website Archives (Pete's photo is on page 3 of the January, 2000 issue, <http://nmramcrdiv10.yolasite.com/archives.php>) and read some of the early newsletters Pete put together to see how exciting it was to be a member in our early months and years. Pete's first "Witless & Clueless" is reprinted on page 3 of this issue.

At one of our next meetings it was also decided we should have a website and a young man in Danville said "I can do that" and he did for about six months. Pete immediately said "I'll do that too" so he took over updating our website, keeping it current and publishing *The Lantern*.

Pete conducted the first operations session in our division on his old N scale layout, the Chesapeake & McKenna Ridge, and has been the driving force for those of you who now enjoy the current operating sessions. He is the author of many modeling articles in national publications and in his spare time became a Master Model Railroader. His N scale layout was featured in the March/April 2009 issue of *N-Scale Magazine*.

Pete and I have traveled to several conventions together and attended Cass on Rail Fan Weekend several years before the division started visits to Cass. He helped me wire my current layout and helped countless others who needed his assistance.

Out of respect for Pete's long and outstanding contribution to our division I have asked that *The Lantern* be renamed for this issue as "The Cannonball". Pete will be missed but never forgotten! — Fred Plymale, Oldest Superintendent



Left, the abandonment of Pete's N scale Chesapeake & McKenna Ridge RR.



For the NMRA MC Region officers link to www.midcentral-region-nmra.org/bod2.html

The Lantern is a monthly (except July) publication of Division 10, Mid Central Region (MCR), National Model Railroad Association. All opinions expressed herein are those of the authors, and do not necessarily reflect those of Division 10, the MCR, the NMRA, or anyone else.

In Recognition...

Many thanks to folks listed in the column below. They have given their support for our club. We encourage all NMRA members to help with financial support to *The Lantern* and our website and the Division 10 activities. **Send your monetary contribution to our Treasurer.**

To be listed here your contribution needs to be at least \$20 in cash, or material valued at \$50, or a total of 20 hours time within the last year. Division 10 receives NO monetary support from the NMRA or the MidCentral Region. Div.10 is recognized by the US government as a 501c3 corporation and your cash or material donations may be tax deductible.

Report materials or time to Stew Winstandley. To the right of each contributing member's name is the month of his or her latest contribution. Whenever one makes a contribution of money, material, or time, his or her date will be updated, and for new contributors, their name will be added. Anyone not making a contribution within 12 months will be dropped.

Ron Kercheval	4/2014
Paul Evans	3/2014
Ray & Renae Grosser	2/2014
Franklin Miller	12/13
Dennis Peevy	10/13
Raymond Cox	"
Don Burris	"
Bruce DeMaeyer	"
Larry Smith	"
Lou Jaquith	"
Alan Bourne	9/2013
John Seybold	"
Tom Krill	"
David Batten	6/2013
John Bowling	"

Bring and Brag standings:

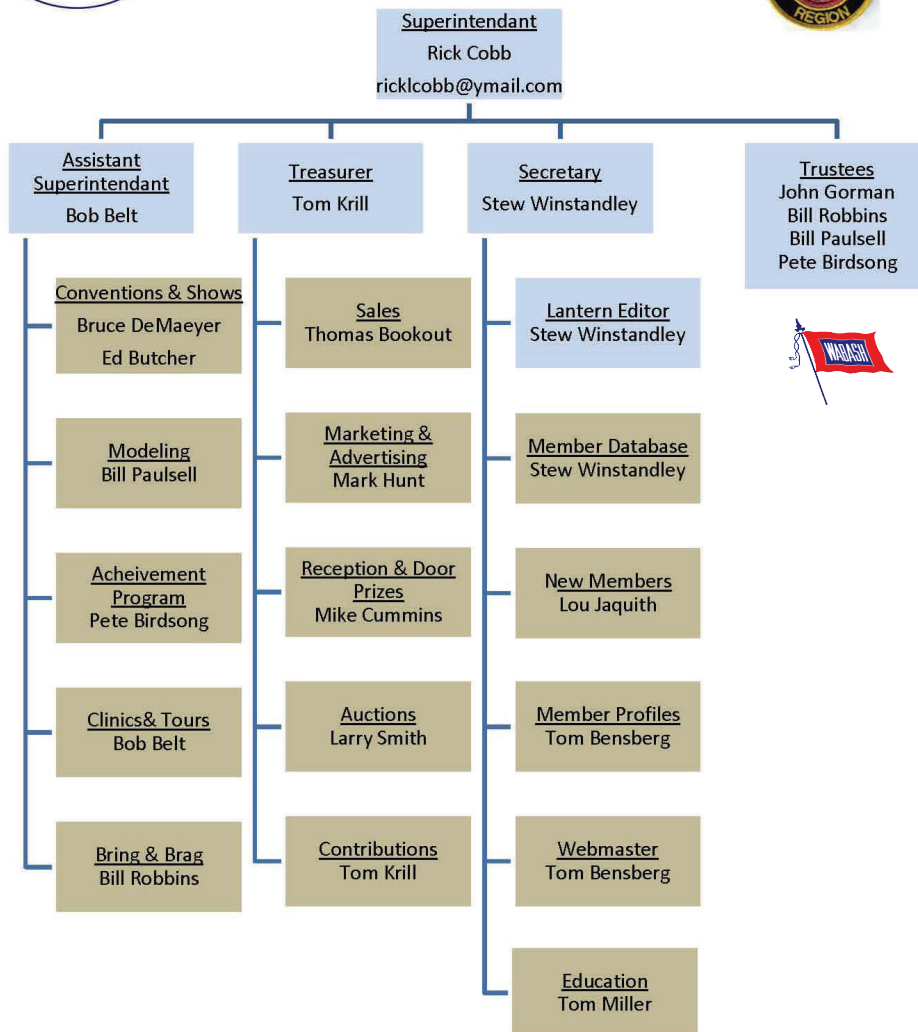
Lou Jaquith, 12; Bill Robbins, 11; Bill Paulsell, 7; Bob Belt, 6; Tom Bensberg, Rick Cobb, Bob Ferguson, Ed Butcher, and Don Burris 2; Bruce DeMaeyer with 1 point.



Pete Birdsong MMR has done everything to make our Division 10 a success. Thanks, Pete.

Organizational Chart

Division 10
Mid-Central Region
National Model Railroad Association
www.div10-mcr-nmra.org



Division 10 Treasurer's Report:

Balance Apr. 1, 2014—\$3823.79; Expenses: Lantern \$22.54, Guest Speaker \$50.00, Ky. State Treasurer \$15.00; Deposits: Sales \$45.00, Contributions \$20.00; Balance Apr. 30, 2014—\$3801.25

Give or send your contribution to: Tom Krill, 3624 Windfair Ln. Lexington, KY 40515

Reprint of the first “Witless & Clueless”

Rivets O'Reilly and Larry Loungecar

Rivets: Larry, there ain't nothing like setting up an operating session with lots of switching, coupling, and uncoupling, making up trains and sending them down the line, dropping off and picking up empties and loads and heading for home.

Larry: Are you crazy, Rivets? My idea of running trains is just running trains. Why go to all that trouble when you can just run them around and around, without all that work?

Rivets: Work? What do you mean, work? That's fun. Any fool (even you) can run 'em around and around in circles.

Larry: Well, maybe it might get boring after a while, if that's all you did. But it's great for a while after a long day, to just run them and relax. Besides, you can set them up in staging tracks, move 'em out, and not have to do all that switching.

Rivets: Oh, yeah? To me the switching is the fun part, although I admit sometimes I let 'em go around just to see them run... I guess it's fun either way, but I think you're missing out on the best part.

Larry: Maybe so, but if I'm having fun, and you're having fun, what are we arguing about?

Rivets: Guess you're right, - think anyone on the prototypes ever has any fun?

— created by Pete Birdsong, Nov. 1999

“Witless and Clueless” was Pete's creation when he was the editor of the Lantern. Occasionally I would write one and then it just sort of evolved into my doing the writing. Working with Pete and Fred was a lot of fun.

We used to have Tuesday night N Scale meetings in the homes of different N Scale modelers. When at my house, I began serving refreshments and then others followed suit when we met in their homes. It was from these meetings that we began discussions about the NMRA and began to reactivate Division 10.

It was Pete who put into place the Master Model Railroader program in our division. Running sessions were held at his house for those working on a "chief dispatcher" certificate. With Pete's help, I earned two certificates while in Lexington: volunteer and scenery. Pete led the way for others of us to get involved in the MMR program.

— Mike Armstrong

The Lexington model railroading community is losing a great friend as Pete Birdsong moves to California. All of us have our reasons for appreciating what Pete has been to us. For me, there are five reasons I will miss him.

First, he is an excellent modeler. He has inspired me to develop my skills in the area. I am still a long way from Pete's level, but I keep working at it. His inspiration will linger in my mind.

Second, he introduced me and many others to the joys of operations. He showed us how to do it, how to organize a session, and how to develop switch lists. Operation has opened many of us to a whole new dimension in model railroading and has increased our enjoyment of the hobby. And, it is a great way to develop new friendships.

Third, Pete pushed and shoved and pulled me through the Achievement Program. I would have never completed it without his help and encouragement. That program was a huge learning experience, and I thank Pete for it.

Fourth, he has been a great leader. His service as superintendent of our division was outstanding. He brought new ideas, new organization, and an increase in attendance. We are thankful for the example he set.

Finally, Pete is an exceptionally fine human being. He was devoted to all of us. Whenever any of us have called on Pete for help, he has always responded. He is very knowledgeable about the mysteries of DCC, and has been generously helpful to those of us who are electronically challenged.

We wish you all the best, Pete. Please stay in touch. Let us know about your new layout, your new club, and what California model railroading is like.

— Bill Paulsell

Convention Model Car Plan-Company Store

Larry Smith, Brian Jones and Mike Cummins have been working with Tony Lucio designing an HO scale Convention Car to sell at our 2015 convention. One is shown below:



<http://nmramcrdiv10.yolasite.com/resources/Documents/Convention%20Report%20Lantern%20June%202014.pdf> is the web link to see all three possible models and read other convention news. More next month on the convention.

THE LANTERN
NEWSLETTER FOR NMRA MCR DIVISION 10

210 BRANNON RD.
NICHOLASVILLE, KY 40356-9711
WWW.DIV10-MCR-NMRA.ORG



JUNE 1, 1:30

BRING AND BRAG

1' x 1' LANDSCAPE WITH ONLY
SCENIC MATERIALS

MEETING AGENDA

GETTING STARTED WITH
OPERATIONS, BOB WEINHEIMER

TOUR

NONE

AROUND THE BEND

MON.	DAY	HOST	PLACE	EVENT / PROGRAM	TOURS	BRING & BRAG
June	1	Div. 10	Central Christian Church, Watkins Bldg., E. Short Street	Getting started with operations—Bob Weinheimer MMR	None	1' x 1' Landscape with only scenic materials
July	13-19	NMRA	Cleveland, Ohio	National Convention http://www.2014cleveland.org/	Layout & prototype tours	
Aug.	3	Div. 10	1145 Linn Rd, Eubank, Ky. 42567	Tour at Ray & Renee Grosser's	7.5" gauge and O scale layouts	
Sept.	7	Div. 10	Central Christian Church, Watkins Bldg., E. Short Street	Contest Judge Training—Dick Briggs MMR & Howard Smith MMR	Tentatively, Pat Gerstle's Sn3 layout	
Oct.	5	Div. 10	Central Christian Church, Watkins Bldg., E. Short Street	Bob Lawson		

To benefit the club, bring any of your surplus model railroading stuff that we may sell.

The 2015 convention website address is <http://thoroughbredlimited2015.yolasite.com/>