



# THE LANTERN



APRIL 2014

VOLUME 16, ISSUE 4

## Superintendent's Report

Will Old Man Winter ever go away? Again he threatened our Sunday meeting only to hold off long enough for our activities. We had a very good turnout and an excellent program.

Bill Paulsell, Pete Birdsong, Bill Robbins, and Larry Smith had a panel type discussion on Operations for our monthly program. It was a very interesting to hear the different methods each of them use for operations on their layouts. They used several different ways to stage the layout before operations. You can manually stage railcars or there are several computer programs available. Each panelist had a hand out with their presentation with a sample of their manifest discussing each line of the manifest. The panelist also talked about different personnel needed to run their operations. These included Dispatchers, Yard Masters, and Engineers. Having the privilege of operating on all four layouts, I can say that it is loads of fun, and a great way to spend a couple hours operating and being with others. It also gets me motivated to finish my own layout. Thanks to each of the panelists for sharing their knowledge and expertise. We'll have more on operations at the June meeting.

Our Bring and Brag contest was an Offline Structure. Again there were some great models that were displayed on Sunday. Bob Belt finished first with an excellent model that was scratch built with outstanding detail. Bill Paulsell finished second and there was a tie for third.

I want to remind everyone that the contest is set on an individual topic. They are not to be a diorama with extra scenery. Any additions need to be kept in the scope of the object that is being judged. If the model is judged to be a diorama, their scores will be disallowed. We need to have a

level playing field for everyone. See page 4 for the April entry requirement.

Thoroughbred Limited 2015 convention progress is in high gear. The hotel issue is solved, clinics are being set up and overall we are full steam ahead. Bruce DeMaeyer, Chairman, and his committee continues their hard work planning and organizing the event (see page 3). A big shout out to Bob Belt for his effort in getting clinics set up for the convention and getting our monthly clinics booked in advance. Awesome job Bob!

Our April meeting program is "Scratch building with Styrene" with Ed Brennen, MMR. I know that you will not want to miss this one. The tour will be to John Bowling's in Danville. Hope to see you there. John is building a nearly completed new layout modeled after the L&N Lebanon branch. It is run with Digitrax DCC on three mains, a yard, and three towns.

— Rick Cobb

## Bring and Brag standings:

Lou Jaquith, 12; Bill Paulsell, 7; Bill Robbins, 6; Bob Belt, 3; Rick Cobb, Bob Ferguson, and Ed Butcher, 2; and Bruce DeMaeyer with 1 point.

Photograph of Bob Belt's entry is below:



## In Recognition...

Many thanks to folks listed in the column below. They have given their support for our club. We encourage all NMRA members to help with financial support to *The Lantern* and our website and the Division 10 activities. **Send your monetary contribution to our Treasurer.**

To be listed here your contribution needs to be at least \$20 in cash, or material valued at \$50, or a total of 20 hours time within the last year. Division 10 receives NO monetary support from the NMRA or the MidCentral Region. Div.10 is recognized by the US government as a 501c3 corporation and your cash or material donations may be tax deductible.

Report materials or time to Stew Winstandley. To the right of each contributing member's name is the month of his or her latest contribution. Whenever one makes a contribution of money, material, or time, his or her date will be updated, and for new contributors, their name will be added. Anyone not making a contribution within 12 months will be dropped.

Ray & Renae Grosser	2/2014
Dennis Peevy	10/13
Raymond Cox	"
Don Burris	"
Bruce DeMaeyer	"
Larry Smith	"
Lou Jaquith	"
Alan Bourne	9/2013
John Seybold	"
Tom Krill	"
David Batten	6/2013
John Bowling	"
Bill Robbins	4/2013
Ed Butcher	"
Ron Kercheval	"
Chester Myers	"

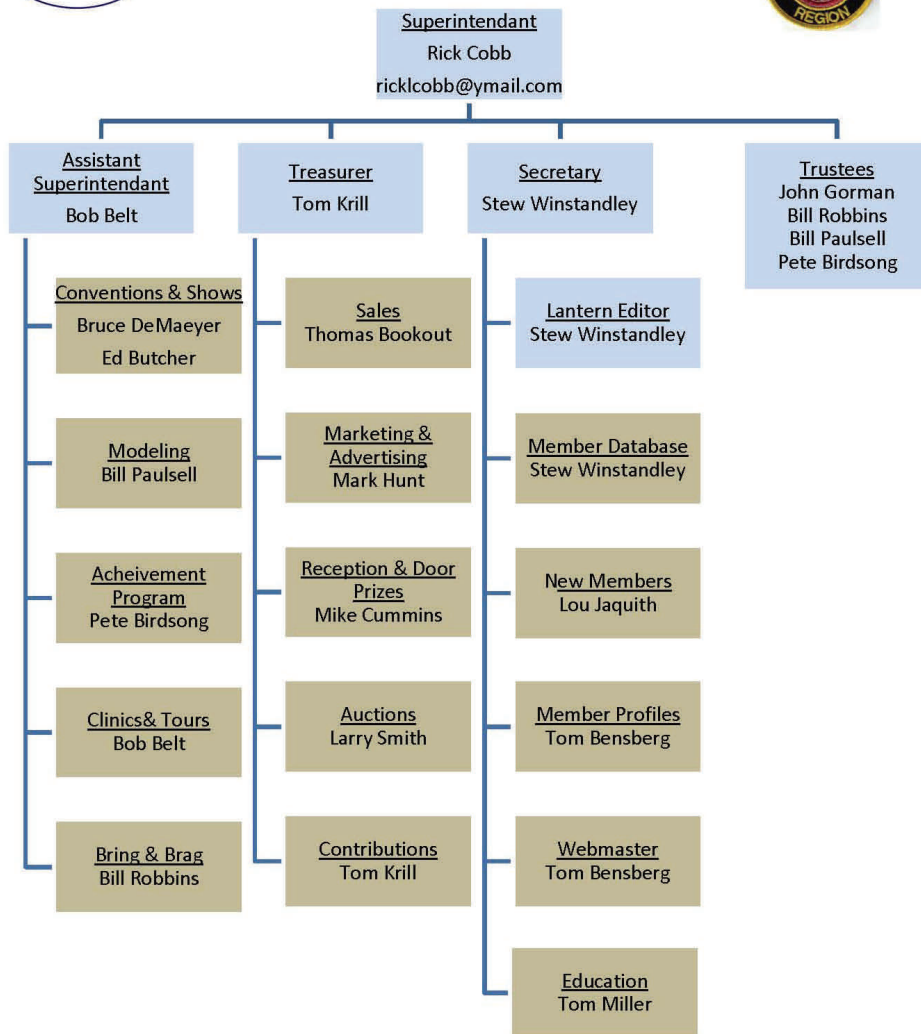


For the NMRA MC Region officers link to [www.midcentral-region-nmra.org/bod2.html](http://www.midcentral-region-nmra.org/bod2.html)

*The Lantern* is a monthly (except July) publication of Division 10, Mid Central Region (MCR), National Model Railroad Association. All opinions expressed herein are those of the authors, and do not necessarily reflect those of Division 10, the MCR, the NMRA, or anyone else.

### Organizational Chart

Division 10  
Mid-Central Region  
National Model Railroad Association  
[www.div10-mcr-nmra.org](http://www.div10-mcr-nmra.org)



#### Division 10 Treasurer's Report:

Balance Feb. 1, 2014—\$3774.85; Expenses: \$34.05 Lantern & Name Badges  
Deposits: \$20.00 Contributions Balance Feb. 28, 2014—\$3760.80

Give or send your contribution to: Tom Krill, 3624 Windfair Ln. Lexington, KY 40515



## CONVENTION REPORT

The Thoroughbred Limited 2015 Convention Committee is inviting members of the NMRA to attend the Regional Convention in Lexington, Ky. to be held May 14-17, 2015. The convention activities will take place at the newly remodeled Campbell House in Lexington. The hotel is currently undergoing a \$14 million renovation. A special convention rate (\$99) will be available for reservations sometime after December 1, 2014.

We have a very detailed website and encourage you to visit it often during the next few months as we cement our plans for the clinics, tours, contest and Banquet. Visit us at: <http://thoroughbredlimited2015.yolasite.com/>

We will provide extra large clinic rooms with on-site audio/visual technical support, and the best of clinicians during the convention. The clinic rooms are all in close proximity to each other, and to the rest of the convention accommodations, with ample close-by restrooms.

There will be over 20 layouts available for members to visit. All will be self-guided so you can arrange your schedule accordingly.

We are planning a clinic/tour schedule that is as free of conflicts as possible, and multiple presentations of the same clinics where needed to avoid additional conflicts. We will also have three layouts open for operations.

Our extra fare planned prototype tours include a visit to the Transkentucky Transportation. (TTI) maintenance facility in Paris, Ky. and the Toyota intermodal and auto-loading facility in Georgetown, Ky.

We are planning a very special company store for the members to buy and sell some outstanding products, and we'll be raffling off a number of very impressive layout products all during the convention.

There will be an extra fare guided tour of one of the most beautiful thoroughbred horse farms, and a guided tour of a world famous bourbon distillery, or the members can see them all on an unguided Bourbon Trail tour.

On Friday afternoon, we will have an extra fare guided tour to the Bluegrass Scenic Railway and Museum in Versailles. We will be providing lunch, a tour and a train ride on their newly renovated historic main line to the Kentucky River.

On Saturday afternoon, we will have an extra fare guided tour to Don Saager's 7.5" gauge layout in Stamping Ground, Ky. This live steam layout features 4800' of track, a 180' S-



curve trestle 22' high, and a 100' tunnel. Abundant locomotives and rolling stock are provided by Don and several other participants in the layout.

The Organization Chart is below. We need everybody to help so please find something that you would like to help with and give a call to the committee head to join the group.

— Bruce DeMaeyer

<b>Chairperson</b>	Bruce DeMaeyer
<b>Administration &amp; Printing Committee</b>	Stew Winstandley
<b>Budget &amp; Finances</b>	<b>Engineer</b>
<b>Hotel Logistics</b>	Tom Krill
<b>Clinics</b>	Lou Jaquith
<b>Company Store</b>	Bob Belt
<b>Contest</b>	Larry Smith
<b>Hospitality &amp; Spouse Program</b>	Bill Paulsell
<b>Banquet</b>	Gwen Cobb
<b>Tours</b>	Lou Jaquith
	Bill Robbins
	Bill Robbins
	Bill Paulsell
	Tom Bookout
	Gwen Cobb
	Ed Butcher
	Open
	Mark Hunt
	Tony Lucio
	Rick Cobb
	Tom Bensberg
	Fred Plymale
	Brian Jones, Mike Cummins, John Gorman
<b>Publicity and Promotions</b>	
<b>Product Development</b>	
<b>Registration</b>	
<b>Web Site and Forms Mgmt</b>	
<b>Conductors:</b>	
<b>Committee Meetings:</b>	On the Tuesday evening following the first Sunday of each month, starting May 6th.



**THE LANTERN**  
NEWSLETTER FOR NMRA MCR DIVISION 10

210 BRANNON RD.  
NICHOLASVILLE, KY 40356-9711  
WWW.DIV10-MCR-NMRA.ORG



*APRIL 6, 1:30*

**BRING AND BRAG**

SMALL MANUFACTURING  
BUSINESS, TWO STRUCTURES  
FOR SAME BUSINESS, ONE KIT  
AND ONE SCRATCH BUILT

**MEETING AGENDA**

SCRATCH BUILDING WITH  
STYRENE—ED BRENNAN

**TOUR**

JOHN BOWLING,  
406 N MAPLE AVE, DANVILLE

**AROUND THE BEND**

MON.	DAY	HOST	PLACE	EVENT / PROGRAM	TOURS	BRING & BRAG
Apr.	6	Div. 10	Central Christian Church, Watkins Bldg., E. Short Street	Scratch building with styrene—Ed Brennan MMR	John Bowling	Small mfg.-1 kit & 1 scratch built structures
May	4	Div. 10	Central Christian Church, Watkins Bldg., E. Short Street	Weathering with powders—Jerry Ashley MMR	Alan Brock	Functional outhouse
May	9, 7:30	BGRRC	Meadowthorpe, at the end of Larch Lane	Swap meet		
June	1	Div. 10	Central Christian Church, Watkins Bldg., E. Short Street	Getting started with operations—Bob Weinheimer MMR	George Campbell	1' x 1' Landscape with only scenic materials
July	13-19	NMRA	Cleveland, Ohio	National Convention <a href="http://www.2014cleveland.org/">http://www.2014cleveland.org/</a>	Layout & prototype tours	Contests

Norfolk Southern 21st Century Steam excursion, Lexington, Ky. to Oneida, Tenn., May 31 and June 1.

Website: <http://tvrail.com/pages/21st-Century-Steam>