



THE LANTERN



FEBRUARY 2014

VOLUME 16, ISSUE 2

Superintendent's Report

We had a great meeting on Sunday, January 6, 2014 that included 3 visitors. The club welcomed Bill Marshall, Paul Baumgartner and Jeremy Dowell. We hope they will join us again and consider membership. We also have a new member, Rick Bentley, who attended the meeting. Welcome, Rick.

Lou Jaquith shared his scratch built bridge, a replica of the Illinois Central bascule bridge over the Green River. Lou shared pictures that he had taken that he used to duplicate the bridge. His bridge was constructed of styrene, as well as some kit bashing, and he used Doc O'Brien's weather powders to weather the bridge. Every detail was meticulously captured. It was awesome and I hope you got to see it.

Fred Plymale conducted a clinic on building sidewalks, streets and roads. He used chipboard to build the sidewalks. He told us about the types of roads that are dirt, blacktop and concrete. He went into detail about the different materials he has used to build the roads on his layout. He used molding plaster for roads and weathered it. Chipboard was also weathered and used for sidewalks. Instead of using a modeling product, Fred used real dirt for his dirt roads. It was great that Fred showed us ways to use other inexpensive materials to construct our own scenes. Thanks Fred!

Bring and Brag had seven entrants and their projects just keep getting better. Thanks to all that entered.

We have a great February meeting planned and hope you will attend. The clinic will be by Bob Belt and the tour will be at Howard Coleman's.

A Division 10 board meeting met on the 16th. A modification was made to the points received by the Bring and Brag entries. First place will now get 3 points, second 2, and third 1 point. Other entries will not received any points. Pete Birdsong, our 2015 convention chairman, presented a proposal to cancel our 2015 MCR convention. Pete will send the proper notices that we're canceling our plans to host it.

Modeling is FUN.

—Rick Cobb

Bring and Brag standings: Lou Jaquith, 10; Pete Birdsong, 5; Rick Cobb, Bob Ferguson, Ed Butcher, Bill Robbins, Bill Paulsell, all with 2, and Bruce DeMaeyer with 1 point.

At the January meeting, Pete Birdsong took first place, followed by Bill Paulsell and Lou Jaquith.

Benefits from your membership in the NMRA

- Fellowship

Members at all levels of the NMRA are eager to share their knowledge and friendship in [local divisions](#), [regions](#) and on the [national level](#).

- Member Services

Being a member of the NMRA entitles you to a [multitude of services](#), all geared toward expanding your enjoyment of the hobby.

- Standards

The NMRA was the organization that set those [Standards and Recommended Practices](#) which still guide manufacturers and consumers alike.

- Achievement Program

The NMRA's [Achievement Program](#), or "AP", is designed to help modelers improve their skills and get more out of their hobby. The "AP" gives recognition to members who have displayed a high degree of skill or service to the hobby.



Cleveland, Ohio

July 13—19, 2014

www.2014cleveland.org



For the NMRA MC Region officers link to www.midcentral-region-nmra.org/bod2.html

The Lantern is a monthly (except July) publication of Division 10, Mid Central Region (MCR), National Model Railroad Association. All opinions expressed herein are those of the authors, and do not necessarily reflect those of Division 10, the MCR, the NMRA, or anyone else.

In Recognition...

Many thanks to folks listed in the column below. They have given their support for our club. We encourage all NMRA members to help with financial support to *The Lantern* and our website and the Division 10 activities. **Send your monetary contribution to our Treasurer.**

To be listed here your contribution needs to be at least \$20 in cash, or material valued at \$50, or a total of 20 hours time within the last year. Division 10 receives NO monetary support from the NMRA or the MidCentral Region. Div.10 is recognized by the US government as a 501c3 corporation and your cash or material donations may be tax deductible.

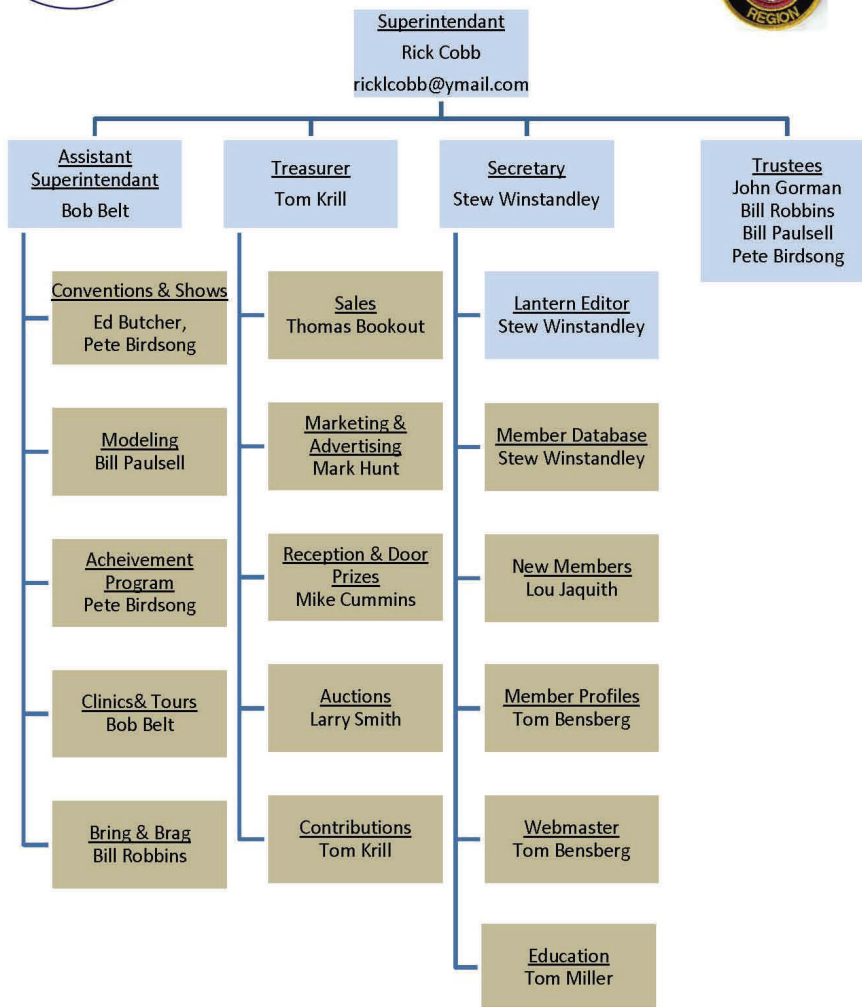
Report materials or time to Stew Winstandley. To the right of each contributing member's name is the month of his or her latest contribution. Whenever one makes a contribution of money, material, or time, his or her date will be updated, and for new contributors, their name will be added. Anyone not making a contribution within 12 months will be dropped.

Dennis Peevy	10/13
Raymond Cox	"
Don Burris	"
Bruce DeMaeyer	"
Larry Smith	"
Lou Jaquith	"
Alan Bourne	9/2013
John Seybold	"
Tom Krill	"
David Batten	6/2013
John Bowling	"
Ray Grosser	5/2013
Bill Robbins	4/2013
Ed Butcher	"
Ron Kercheval	"
Chester Myers	"
Randy Coffman	2/2013
Paul Evans	1/2013
Orville Boes	"

Organizational Chart

Division 10
Mid-Central Region
National Model Railroad Association

www.div10-mcr-nmra.org



Larry K. Smith

NMRA Master Model Railroader #521

Pete Birdsong will award the AP to Larry at the February meeting

Division 10 Treasurer's Report:

Balance Dec. 1, 2013—\$3595.69;
Expenses: \$56.84 Lantern ;
Deposits: \$207.00 Sales
Balance Dec. 31, 2013—\$3745.85

Give or send your contribution to:
Tom Krill, 3624 Windfair Ln., Lexington,
Ky. 40515

Witless & Clueless
The Continuing Saga of
Rivets O'Reilly and Larry Loungecar
 Written by Mike Armstrong

Rivets: Hey, Larry, how's it goin'?!
 Larry: I just made a revelation about myself and I am a bit blue.
 Rivets: Larry, I'm gonna start callin' you "Railroad Blue Boy". Yer always bothered by somethin'! So, what's the big revelation about yerself?
 Larry: Rivets, I have discovered I am a model railroad junk man.
 Rivets: What do ya mean?
 Larry: Well, Rivets, like most of us, I am always lookin' for a bargain.
 Rivets: Yeah?
 Larry: Most of my bargains are from train shows, from under the table. I buy this broken stuff and I think I can do something with it.
 Rivets: But ya never do.
 Larry: Well sort of. I have a ton of broken Lionel accessories that are looking nice but they don't work.
 Rivets: What do ya mean?
 Larry: I strip the paint off of 'em. I paint 'em. Then I set 'em on a shelf. And that doesn't count for the huge box of stuff waitin' to be painted.
 Rivets: Why don't ya fix 'em first?
 Larry: I guess I figure I'll get to it later.
 Rivets: But aren't ya afraid you'll mar the finish?
 Larry: But I like to paint stuff.
 Rivets: Well, Junkman, there ya have it! So what are ya gonna do with all yer broken stuff?
 Larry: I like to look it it, hold it, admire my paint job.
 Rivets: Larry, most of us do that with new stuff. Yer the only guy I know who likes to look at junk.
 Larry: But when I look at it, it brings back a memory of a good time. I got this thing there, that thing there...
 Rivets: Yeah, Larry, carry moonbeams home in a jar!
 Larry: But I get the stuff cheap!

Rivets: How much money do ya have wrapped up in stuff you'll never use?
 Larry: Rivets, we're not talkin' economics here.
 Rivets: Right, we are talkin' yer train budget.
 Larry: Well, ya can buy this stuff cheap when ya don't have enough money for the good stuff.
 Rivets: Now we're getting' down to it. You just like to spend money on somethin'...anything, as long as ya spend a little money to make the trip to the train show worthwhile.
 Larry: Doesn't everybody?!
 Rivets: Larry, it's time to rethink yer approach to train shows. Look at all the space this stuff takes. Larry, yer *some* model rail-roader!
 Larry: Thanks, Rivets.
 Rivets: Right.



Just a small part of Howard Coleman's train collection and lay-outs. On the February tour you'll see models from 1:8 scale down to Z.

THE LANTERN
NEWSLETTER FOR NMRA MCR DIVISION 10

210 BRANNON RD.
NICHOLASVILLE, KY 40356-9711
WWW.DIV10-MCR-NMRA.ORG



FEBRUARY 2, 1:30

BRING AND BRAG

OFFLINE STRUCTURE

MEETING AGENDA

SMD LEDs—WHAT, WHERE &
HOW—BOB BELT

TOUR

HOWARD COLEMAN'S G, O, N
& Z LAYOUTS

The Bluegrass Railroad Club would like to host a swap meet on May 9th in place of our regular club meeting and we would like NMRA MCR Division 10 members to participate. There will be no cost for a table and they are available on a first come, first serve basis. There will also be no cost for entry. We would like to start setup at 7:00pm with sales starting at 7:30pm. Our only requirement is that you must be a member of the Bluegrass Railroad Club or NMRA Div. 10 in order to have a table to sell.

We would really like for your group to join us in this.

Joshua Johnson, President

joshua.n.johnson@gmail.com

Bluegrass Railroad Club

AROUND THE BEND

MON.	DAY	HOST	PLACE	EVENT / PROGRAM	TOURS	BRING & BRAG
Feb.	2	Div. 10	Central Christian Church, Watkins Bldg., E. Short Street	SMD LEDs—What, where & how—Bob Belt	Howard Coleman	Offline Structure
Mar.	2	Div. 10	Central Christian Church, Watkins Bldg., E. Short Street	Operations panel—Bill Paulsell, Pete Birdsong & Bill Robbins	Bill Robbins	Online Structure
Mar.	8	Div. 7	Lakota West Campus, 5050 Tylersville Rd., West Chester, Ohio	Spring Flea Market & Swap Meet, Saturday 10 AM to 5 PM \$4	Layouts	
Apr.	6	Div. 10	Central Christian Church, Watkins Bldg., E. Short Street	Scratch building with styrene—Ed Brennen MMR		Small Mfg.—two structures—kit & scratch built
May	4	Div. 10	Central Christian Church, Watkins Bldg., E. Short Street		Alan Brock	Outhouse

Our auctions chairman, Larry Smith, will have items available for purchase at all indoor meetings.