



THE LANTERN



NOVEMBER 2014

VOLUME 16, ISSUE 11

Superintendent's Report

Fall is upon us, trees are changing to brilliant reds, golds, oranges and yellows. It's time to turn to our last minute chores like getting yards ready for winter, storing lawn furniture, and getting vehicles ready for the colder days that lie ahead. It may also be a time that we take that last weekend trip or in my case the last vacation of the year. I have just returned from a trip to Gulf Shores, Alabama. What a beautiful week. One of the many interesting things to see in the area was the Old L&N depot train museum in Foley, Alabama. The depot has been restored to its former glory and it also has the original freight depot attached. Outside there are several boxcars and an L&N caboose and a Diesel switcher.

The museum also has an annex 60 X 24 building that houses their donated O scale layout. The Caboose Club (a group of railroad buffs) went to Montgomery, Alabama, disassembled the layout, and put it in storage until an annex to the L & N Depot Museum could be built. The building was completed in December 2005. If you are in Foley it is a must stop.

Bring and Brag has started a new year. It should be a great year with a few surprises coming. No changes to current rules or format. Make sure to enter each month so you don't get left out of the fun. October's results are on page 2.

In September, I attended the Fall BOD meeting in Columbus, Ohio. A great meeting and I will report some of those items that were discussed at a later time. Several people ask about the convention and I gave a report on our progress in Bruce's absence. Everyone seems very excited about coming to Lexington. Our convention website address is shown at the bottom of page 4.

Our November meeting is scheduled for the 2nd. The Bring and Brag will be a passenger train and four cars. Randy Coffman is scheduled to have a clinic on Clamps and the tour will be at the home of Bill Crace. Hope to see you there.

Keeping Modeling Fun

— Rick Cobb

Assistant Superintendent Ramblings

Seems like I can't keep everything straight or something changes!

The November clinic will be our own Randy Coffman on a 'how to' on manufacturing and use of the Right Clamp and some other new products that Randy produces at his home and sells nationally. His website address is:

<http://www.coffmaneng.com/rightclamp/rc-unique.cfm>

November's tour is at Bill Crace's Hi-Rail here in Lexington. The Division was there a couple years ago and Bill Robbins gave me the lead to contact him. He's looking forward to seeing all of us again.

Believe it or not, the November clinic and tour haven't changed!!

The December clinic will be changed to the trial contest judging. Bring your best model. This clinic is the one to prepare for our May 2015 Convention contest. This will give everyone the opportunity to improve their best models with critiques from the September judge training session - and will give everyone time to better prepare to WIN at the our Regional Convention. Be sure to have your paperwork ready (see the NMRA website for the forms).

The December tour will be hosted by Lou Jaquith. He promises to have the bridge re-installed for the tour. This is another tour I'm looking forward to since I've haven't seen Lou's layout.

For our January 4, 2015 regular Sunday meeting we will have a Narrow Gauge clinic by John Burchnall - 'Secrets of Eastern Loggers' - that he gave at the Kansas City 34th Annual Narrow Gauge Convention this year (see page 3 of October's *Lantern*). This is a reschedule from the October meeting where I screwed up.

I've got a couple more clinics and tours firming up for the 1st Quarter. Keep an eye on the *Lantern* for the schedule.

The photograph on page 3 is from my October trees clinic.

—Bob Belt



For the NMRA MC Region officers link to www.midcentral-region-nmra.org/bod2.html

The Lantern is a monthly (except July) publication of Division 10, Mid Central Region (MCR), National Model Railroad Association. All opinions expressed herein are those of the authors, and do not necessarily reflect those of Division 10, the MCR, the NMRA, or anyone else.

In Recognition...

Many thanks to folks listed in the column below. They have given their support for our club. We encourage all NMRA members to help with financial support to *The Lantern* and our website and the Division 10 activities. **Send your monetary contribution to our Treasurer.**

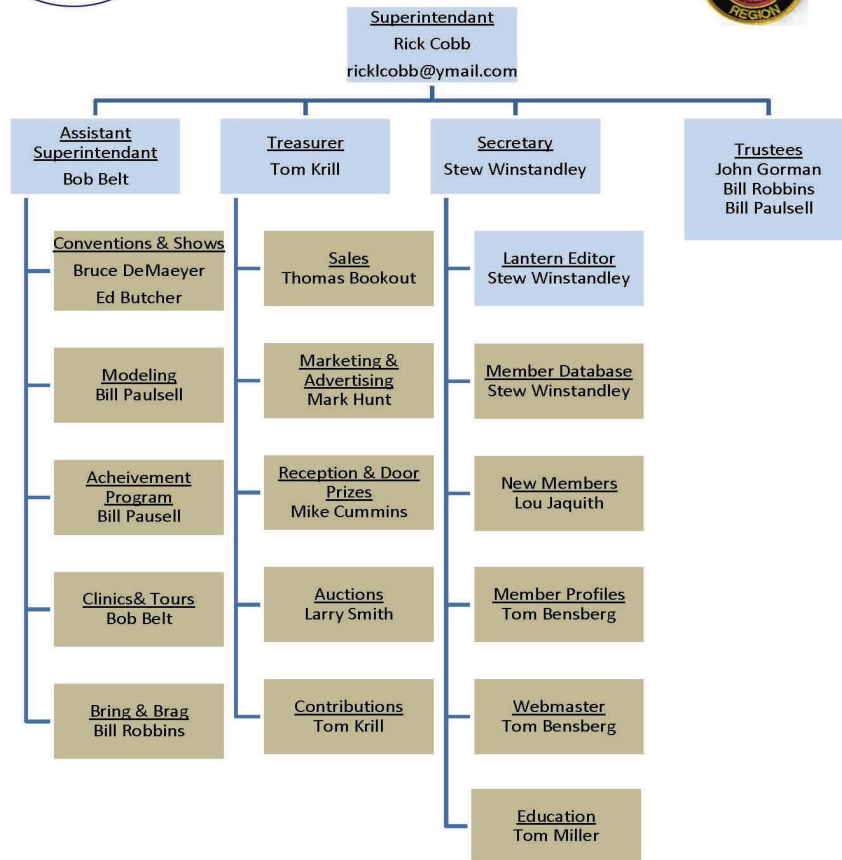
To be listed here your contribution needs to be at least \$20 in cash, or material valued at \$50, or a total of 20 hours time within the last year. Division 10 receives NO monetary support from the NMRA or the MidCentral Region. Div.10 is recognized by the US government as a 501c3 corporation and your cash or material donations may be tax deductible.

Report materials or time to Stew Winstandley. To the right of each contributing member's name is the month of his or her latest contribution. Whenever one makes a contribution of money, material, or time, his or her date will be updated, and for new contributors, their name will be added. Anyone not making a contribution within 12 months will be dropped.

John Stokes	9/2014
David Battin	7/2014
John Bowling	"
Ed Butcher	"
Henry Sneed	6/2014
Bill Robbins	5/2014
Chester Myers	"
Rick Cobb	"
Randy Coffman	"
Orville Boes	4/2014
Ron Kercheval	4/2014
Paul Evans	3/2014
Ray & Renae Grosser	2/2014
Franklin Miller	12/13
Dennis Peevy	10/13
Raymond Cox	"
Don Burris	"
Bruce DeMaeyer	"
Larry Smith	"
Lou Jaquith	"
Alan Bourne	9/2013
John Seybold	"
Tom Krill	"

Organizational Chart

Division 10
Mid-Central Region
National Model Railroad Association
www.div10-mcr-nmra.org



Bring and Brag

Correction to final 2013-2014 final standings: Lou Jaquith was 1st, Bill Robbins 2nd, and Bob Belt was third.

2014-2015 standings after one meeting: Dave Battin, 3 points; Bill Robbins and Bill Paulsell tied, 1.5 points each.

Division 10 Treasurer's Report:

Balance September 1, 2014—\$2677.83; Expenses: Lantern \$43.12, Guest Speakers 100.00; Deposits: Contributions \$50.00;
Balance September 30, 2014—\$2584.71

Give or send your contribution to: Tom Krill, 3624 Windfair Ln. Lexington, KY 40515



OFFICIAL PRESS RELEASE

(Bucklin, Missouri) – White River Productions has acquired [Railroad Model Craftsman](#) and [Railfan & Railroad](#) magazines, effective September 1, 2014. The asset purchase agreement between Carstens Publications and White River Productions was completed Thursday, August 28, 2014.

Carstens Publications' final issues of the two titles are the June issues, and future issues will be produced by White River Productions. Staff assignments for the two publications have not yet been determined. Included in the agreement is the Books Division of Carstens Publications, which will continue under White River Productions. Not included is [Flying Models](#) magazine.

“We are excited to welcome these two Carstens titles to our family of White River Productions publications,” said Kevin EuDaly, president of White River Productions. “These magazines are an important part of railroad publications and White River Productions looks forward to continuing their legacies.”

THE LANTERN
NEWSLETTER FOR NMRA MCR DIVISION 10

210 BRANNON RD.
NICHOLASVILLE, KY 40356-9711
WWW.DIV10-MCR-NMRA.ORG



Nov. 2, 1:30

BRING AND BRAG

PASSENGER TRAIN—ENGINE AND
FOUR CARS

MEETING AGENDA

RANDY COFFMAN—CLAMPS

TOUR

BILL CRACE, 310 MARIEMONT
DR., 40505

AROUND THE BEND

t MON.	DAY	HOST	PLACE	EVENT / PROGRAM	TOURS	BRING & BRAG
Nov.	2	Div. 10	Central Christian Church, Watkins Bldg., E. Short Street	Randy Coffman—Clamps	Bill Crace	Passenger train—engine and four cars
Nov.	15	Div. 8	2919 Bardstown Rd., Louisville, Ky.	Train show and sale—10 am to 3 pm		
Dec.	7	Div. 10	Central Christian Church, Watkins Bldg., E. Short Street	Trial contest judging	Lou Jaquith	MOW train—engine and four cars
Jan.	4	Div. 10	Central Christian Church, Watkins Bldg., E. Short Street	Secrets of Eastern Loggers, John Burchnall		Six hand painted figures, people or animals, any scale
Feb.	1	Div. 10	Central Christian Church, Watkins Bldg., E. Short Street			

Our convention website address is : <http://thoroughbredlimited2015.yolasite.com/> Next planning meeting is November 11th.

Registrations for our convention are now being accepted.