



THE LANTERN



OCTOBER 2014

VOLUME 16, ISSUE 10

Superintendent's Report

On August 22, we made our way to Cass State Park, West Virginia for our 4th annual trip. After starting off with breakfast at a Cracker Barrel, we began the 6 ½ hour journey to the Cass Scenic Railroad State Park. Arriving that afternoon, we began the start of a peaceful weekend. Other than a few navigational errors and more food than an Army could eat, our weekend was a great time. I would like to thank Thomas Bookout and Alan Bourne for fixing dinner the two nights, and Larry Smith for preparing breakfast both mornings. Thanks to these guys for all their hard work. Our trip to Bald Knob began Saturday morning and concluded with the return to the Cass Depot late that afternoon. If you have never been to Cass it is a great trip and the view from Bald Knob is awesome. They said you can see for 25 miles.

On Sunday September 7th at our regular monthly meeting, I presented the Bring and Brag awards. Lou Jaquith finished first, Bill Robbins was second and Bob Belt was third. Each winner was presented a certificate. Congratulations to these guys and all their hard work. During the year we had some outstanding models and that only backs up what has been said, "we have some great modelers in this division."

Dick Briggs MMR and Howard Smith MMR were our clinicians for our Sunday meeting. The topic was Contest Judge training. Dick was able to give a lot of vital information that helps us understand what the judges are looking for and also give us information when some of our members become judges. Several members brought in models to be judged. They broke down into groups of 3 or 4 and judged a model as if it were in an actual contest. I believe our members have a greater understanding of the Judging process. Thanks Dick and Howard for sharing your time and information. Great clinic!

On next meeting will be October 5th at the church. The Bring and Brag contest will be a Public Service Building, you may read about the clinic on page 3, and our tour is scheduled for Pat Gerstle's Sn3 layout. I look forward to seeing you there, and you'll want to see Pat's layout.

Keeping Modeling Fun

— Rick Cobb

Assistant Superintendent Ramblings

For our October 5, 2014 regular Sunday meeting, there has been a change, Bob Lawson has had surgery. We will have a Narrow

Gauge clinic by John Burchnell –

'Engineering Secrets of Eastern Loggers' – that he gave at the Kansas City 34th Annual Narrow Gauge Convention this year (see page 3, photo right).



The tour for October is to Pat Gerstle's Sn3 layout. Pat has a Windom Lane, Nicholasville address, but is just over the county line, Nicholasville Road or Harrodsburg Road, off of Brannon Road – I'll have maps at the meeting. (photos on page 2)

Randy Coffman will be doing the November clinic on a 'how to' on manufacturing and use of the Right Clamp and some other new products that Randy produces at his home and sells nationally.

November's tour is at Bill Crace's Hi-Rail here in Lexington. The Division was there a couple years ago and Bill Robbins gave me the lead to contact him. He's looking forward to seeing all of us again.

For December, I really had a hard time getting a clinic presenter so I thought I'd do a 'hands on' clinic on 'Wire Form Trees'. This will definitely be a 'how to' clinic with some of the background, uses, and applications of using commonly available materials. One of the 100 and one ways to model trees.

The December tour will be hosted by Lou Jaquith. He promises to have the bridge re-installed for the tour. This is another place I'm looking forward to, since I've not seen Lou's layout.

Still tentative, the January clinic will be the trial contest judging – this is the one to prepare for the Convention contest. This will give everyone the opportunity to improve their best models with critiques from the September judge training session - and will give everyone time to better prepare to WIN at the our Regional Convention. Be sure to have your paperwork ready.

I've got a couple more clinics and tours firming up for the 1st Quarter. Keep an eye on *The Lantern* for the schedule.

—Bob Belt



For the NMRA MC Region officers link to www.midcentral-region-nmra.org/bod2.html

The Lantern is a monthly (except July) publication of Division 10, Mid Central Region (MCR), National Model Railroad Association. All opinions expressed herein are those of the authors, and do not necessarily reflect those of Division 10, the MCR, the NMRA, or anyone else.

In Recognition...

Many thanks to folks listed in the column below. They have given their support for our club. We encourage all NMRA members to help with financial support to *The Lantern* and our website and the Division 10 activities. **Send your monetary contribution to our Treasurer.**

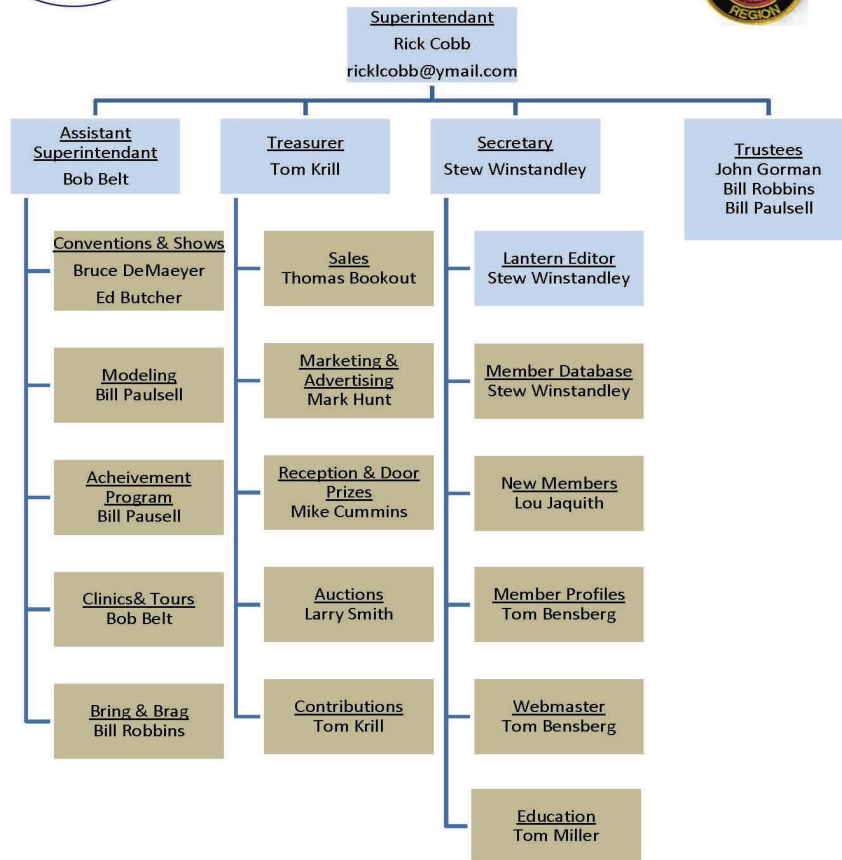
To be listed here your contribution needs to be at least \$20 in cash, or material valued at \$50, or a total of 20 hours time within the last year. Division 10 receives NO monetary support from the NMRA or the MidCentral Region. Div.10 is recognized by the US government as a 501c3 corporation and your cash or material donations may be tax deductible.

Report materials or time to Stew Winstandley. To the right of each contributing member's name is the month of his or her latest contribution. Whenever one makes a contribution of money, material, or time, his or her date will be updated, and for new contributors, their name will be added. Anyone not making a contribution within 12 months will be dropped.

| | |
|---------------------|--------|
| David Battin | 7/2014 |
| John Bowling | " |
| Ed Butcher | " |
| Henry Sneed | 6/2014 |
| Bill Robbins | 5/2014 |
| Chester Myers | " |
| Rick Cobb | " |
| Randy Coffman | " |
| Orville Boes | 4/2014 |
| Ron Kercheval | 4/2014 |
| Paul Evans | 3/2014 |
| Ray & Renae Grosser | 2/2014 |
| Franklin Miller | 12/13 |
| Dennis Peevy | 10/13 |
| Raymond Cox | " |
| Don Burris | " |
| Bruce DeMaeyer | " |
| Larry Smith | " |
| Lou Jaquith | " |
| Alan Bourne | 9/2013 |
| John Seybold | " |
| Tom Krill | " |

Organizational Chart

Division 10
Mid-Central Region
National Model Railroad Association
www.div10-mcr-nmra.org



Division 10 Treasurer's Report:

Balance August 1, 2014—\$2633.57; Expenses: none; Deposits: Contributions \$25.00, Sales \$19.26;
Balance August 31, 2014—\$2677.83

Give or send your contribution to: Tom Krill, 3624 Windfair Ln. Lexington, KY 40515

Engineering Secrets of the Eastern Loggers (October 5th Division 10 clinic)

by John Burchnell, Cincinnati, Ohio

See techniques and features engineered by the Eastern Loggers to create their unique sectional HO/HOn3 layout depicting Pennsylvania Logging in the 1920's. These re-applicable items are key to the **portability, durability, operation and presentation** of the layout. Included are many useful and interesting pioneering methods encompassing **Layout Connections** (both electrical and mechanical), **Ease of Construction and Operation, Portability and Appearance**. Investigating, designing and building these successful items is a source of much enjoyment in this wonderful hobby of model railroading.

John is a retired Professional Engineer, and a founding member of the Eastern Loggers modeling group. He is a lifetime model railroader and railroad and technology enthusiast, and is very active in the NMRA and Cincinnati Division 7. As a teenager John worked in the hobby in both manufacturing and retail. He enjoys most every aspect of our incredible hobby, including photography, research, scenery and design. He has publication credits in several model railroading magazines.

The Eastern Loggers - The Eastern Loggers are an informal group of modelers with the primary purpose of promoting the hobby of scale model railroading through modeling and sharing the history of Pennsylvania logging railroads and related industry. Their major focus is the research, development, and exhibition of their "museum quality" portable layout. Other family members participate in social activities, as well as pitching in on layout set up, staffing, and take down activities.

The Eastern Loggers Layout - An HO scale 1920's era Pennsylvania logging layout, built by an informal group known as the Eastern Loggers. Inspired by the series of books authored by Kline, Casler, and Taber. This is a "fine scale" sectional model railroad layout emphasizing realistic scenery, structures, rolling stock, and theme consistency. It is totally built using a pioneering foam board construction method. The basic scenery is 100% complete. The structures and final scenery are about 98% complete. In addition to the standard gauge track, the layout has some narrow and dual gauge track. The best features of the layout include scenery, trees, structures, rolling stock and a cohesive theme and execution. The layout is currently rectangular, measuring 10 x 20 feet, with a double-ended horseshoe shaped staging yard hidden in the interior.

NMRA on the West Coast

Hello to all of you in Division 10. As promised, this is an update on how things are going here in California. We're loving the house we rented in Danville (about 45 minutes from San Francisco on a Sunday morning). We're about 25 minutes from our daughter in Oakland, and about 45 from the one in San Jose. The house is a four bedroom ranch with a fenced yard for the grand-kids, and in a flat area for biking and walking. It's less than half the finished living area as our house in Lexington, no basement, no attic, and more than twice as expensive. We just got back from spending several days with the San Jose daughter in a chalet on Lake Tahoe. It's great to be able to do these kinds of things. We're in a bridge group, about to join our local church, and getting more active in several things in addition to baby-sitting the grand-kids and other family activities and outings.

I have a plan for a down-sized Fernwood Lumber Co. Railroad, and have started re-assembling my benchwork. It will go along one wall of the garage, about 2 feet by 19+ feet, with a 2 foot by 6-foot ell at the back to accommodate a wye. The other end will have the turntable. My Joe-pie Weed trees seem to have survived the move.

I went to my first NMRA meeting, in the Coast Division (<http://www.pcrnmra.org/coast/>) of the Pacific Coast Region. What a difference from Division 10! You can really be proud of Division 10. They meet only once a quarter out here, all day long, and publish a quarterly newsletter. Lots of people (maybe 75), but no one greeted me, even though they gave me a red sticker to wear as someone new when I registered. It was held at an Elks Club facility. There were four clinics in two rooms (two clinics on filling out AP paperwork (ZZZ), and one on 3D printing (zzz). You had to go through one room to get to the other, and walk behind the clinician to get into the second room, which was separated from a very loud Elks' bar by just a screen. If you wanted to go to a clinic, you had to haul a chair up from the auction room, and when the auction started, you had to haul a chair back down if you weren't lucky enough to get one still in the room. They had to pay \$350 to rent the rooms, and that was because they got a deal through one of the members who is also an Elk. The model contest was for steam locomotives, diesel/other locomotives, and passenger cars, plus a photo contest on "Working on the Railroad." In addition, there was a display only area in which the Super showed a scratch-built sawdust burner and some sawmill machinery kits. I had the only 3 entries in steam, and 3 of the 5 entries in diesel/other. I took 1st, 2nd and 3rd place in steam (sort of a hollow victory). In Diesel, I took first and was in a three-way tie for second, winning two ribbons and the plaque in that category. What a waste! There were no entries for passenger cars, and about 5 photos.

There probably weren't more than six or eight votes cast. What a pitiful interest level in modeling!

The business meeting around 12:15 was very short, mostly announcements of a few upcoming shows & events.

The main activity of the meeting was the live auction. There were 17 tables, with 510 (five hundred and ten!) items, each individually auctioned, and many were boxes full of cars, buildings, or whatever auctioned as one item. Most items were sold for less than \$5.00, with the bulk of that at \$1.00. It went on for hours. Lots of items with no bids. The most interesting item was a Bob Lawson-class diorama of a waterfront scene with a boat under construction. Fred would have loved it. It started at \$100 and sold for \$180.

The auction broke for a few minutes around 2:00 to announce the model contest winners, and when I went to pick up my entries, I was at last approached by a few people who asked me about them, and seemed friendly.

I got a couple of names by approaching the Super, someone in charge of the Layout Design and Operations SIG, and the AP clinician.

All in all, a pretty disappointing meeting, but hopefully some of the contacts I made will be good. I'll let you know in the future how that and the club scene plays out, and how the layout progresses. In the meantime, be glad you're in such a great division! I miss you all.

— Pete Birdsong

THE LANTERN
NEWSLETTER FOR NMRA MCR DIVISION 10

210 BRANNON RD.
NICHOLASVILLE, KY 40356-9711
WWW.DIV10-MCR-NMRA.ORG



OCT. 5, 1:30

BRING AND BRAG

PUBLIC SERVICE BUILDING

MEETING AGENDA

ENGINEERING SECRETS OF
EASTERN LOGGERS—JOHN
BURCHNALL (SEE PAGE 3)

TOUR

PAT GERSTLE'S SN3 LAYOUT,
206 WINDOM LN., 40356

AROUND THE BEND

| t MON. | DAY | HOST | PLACE | EVENT / PROGRAM | TOURS | BRING & BRAG |
|--------|-------|---------|--|--|-------------------------|---|
| Oct. | 5 | Div. 10 | Central Christian Church, Watkins Bldg., E. Short Street | Secrets of Eastern Loggers, John Burchnall | Pat Gerstle's Sn3 | Public Service Building, e.g., City Hall, Library |
| Oct. | 11-12 | Div. 7 | 8940 Union Center Blvd., West Chester Township, Ohio | Cincinnati Model Railroad Show | Lakota West High School | |
| Nov. | 2 | Div. 10 | Central Christian Church, Watkins Bldg., E. Short Street | Randy Coffman—Clamps | Bill Crace | Passenger train—engine and four cars |
| Nov. | 15 | Div. 8 | 2919 Bardstown Rd., Louisville, Ky. | Train show and sale—10 am to 3 pm | Layouts | |
| Dec. | 7 | Div. 10 | Central Christian Church, Watkins Bldg., E. Short Street | Wireform Trees—Bob Belt | Lou Jaquith | MOW train—engine and four cars |

Our convention website address is : <http://thoroughbredlimited2015.yolasite.com/> Next planning meeting is October 7th.

Tom Miller has an article on page 10 in the MCR's August *Kingpin* newsletter. It is about the Garden Railroad in the Arboretum on Alumni Drive, http://archive.midcentral-region-nmra.org/NewsLetterFold/MCRNLFold/14B_Kingpin_201408.pdf.