



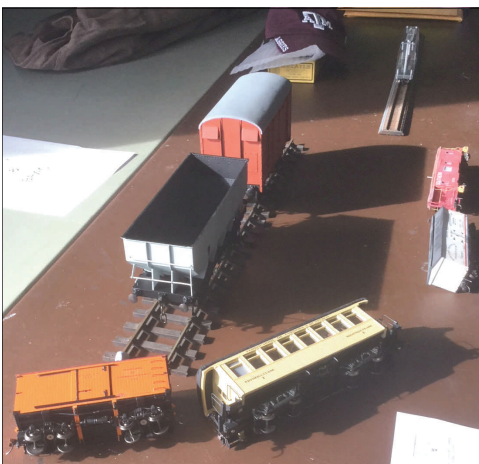
THE LANTERN



FEBRUARY 2018 VOLUME 20 ISSUE 2

Superintendent's Report

The January meeting at the Eastside Branch of the Library was really great – if you missed it. **Bruce DeMaeyer's** clinic on North American Air Brake Systems was one of the most 'animated' we've had for a long time. By 'animated' what I really mean was attendee participation/questions/comments. Last one with the level of participation that was even close was the clinic by **Joe Holbrook** on steam back last February. These are the kind of clinics that really bring out the breadth of interest in model railroading – and the fun of listening to expert presentations.



Not only that, but the Bring & Brag in advance of the clinic brought out several interesting examples of brake systems – one by **H. Maelor Davies** on English freight car systems, others by **Larry Smith, MMR** and

Tom Krill, one by me from a Merit Award, and finally a widget by **Randy Coffman** that he calls a 'track dynamics car' to check track work. There is nothing like having an inventor in our midst. If I missed anyone – sorry – .

The Division 10 T-Trak layout is well under way and was set up at the meeting (right) in the 'Maker Space' room. It was impressive to see what guys



(including non-members) have done on modules and to see something bigger than an oval. **Bob Ferguson's** modules are top drawer. Several others by **Bruce DeMaeyer, Brian Jones** and **Frank Stevenson** were well under way in preparation for the Louisville



Great Train Show in mid-January. On page 3 there are photos as late breaking news for this

issue. Above is a Brian Jones photo of some of the Division 10 modules at the Louisville show.

We'll be back at the Tates Creek Branch in February with Beaumont in March. Note: the April meeting will be on the 8th.

OK – so what is the theme for this month? Well, how about clinic subjects – what do you want to hear and see about? Let Bruce or me know and we'll see if we can find a source. I don't think we have exhausted our internal knowledge base yet – or even timing to revisit subjects that were covered a couple years back where there may be new/ revised/ updated information available. Note that the national magazines go back to basics every so often. Of course, they are dependent on submission of articles. Like the one by **Pete Birdsong, MMR**, couple months back about building a wiring harness on top of



For the NMRA MC Region officers link to www.midcentral-region-nmra.org/bod2.html

The Lantern is a monthly (except July) publication of Division 10, Mid Central Region (MCR), National Model Railroad Association. All opinions expressed herein are those of the authors, and do not necessarily reflect those of Division 10, the MCR, the NMRA, or anyone else.

In Recognition...

Many thanks to folks listed in the column below. They have given their support for our club. We encourage all NMRA members to help with financial support to *The Lantern* and our website and the Division 10 activities. **Send your monetary contribution to our Treasurer.**

To be listed here your contribution needs to be at least \$20 in cash, or material valued at \$50, or a total of 20 hours time within the last year. Division 10 receives NO monetary support from the NMRA or the MidCentral Region. Div.10 is recognized by the US government as a 501c3 corporation and your cash or material donations may be tax deductible.

Report materials or time to Stew Winstandley. To the right of each contributing member's name is the month of his or her latest contribution. Whenever one makes a contribution of money, material, or time, his or her date will be updated, and for new contributors, their name will be added. Anyone not making a contribution within 12 months will be dropped .

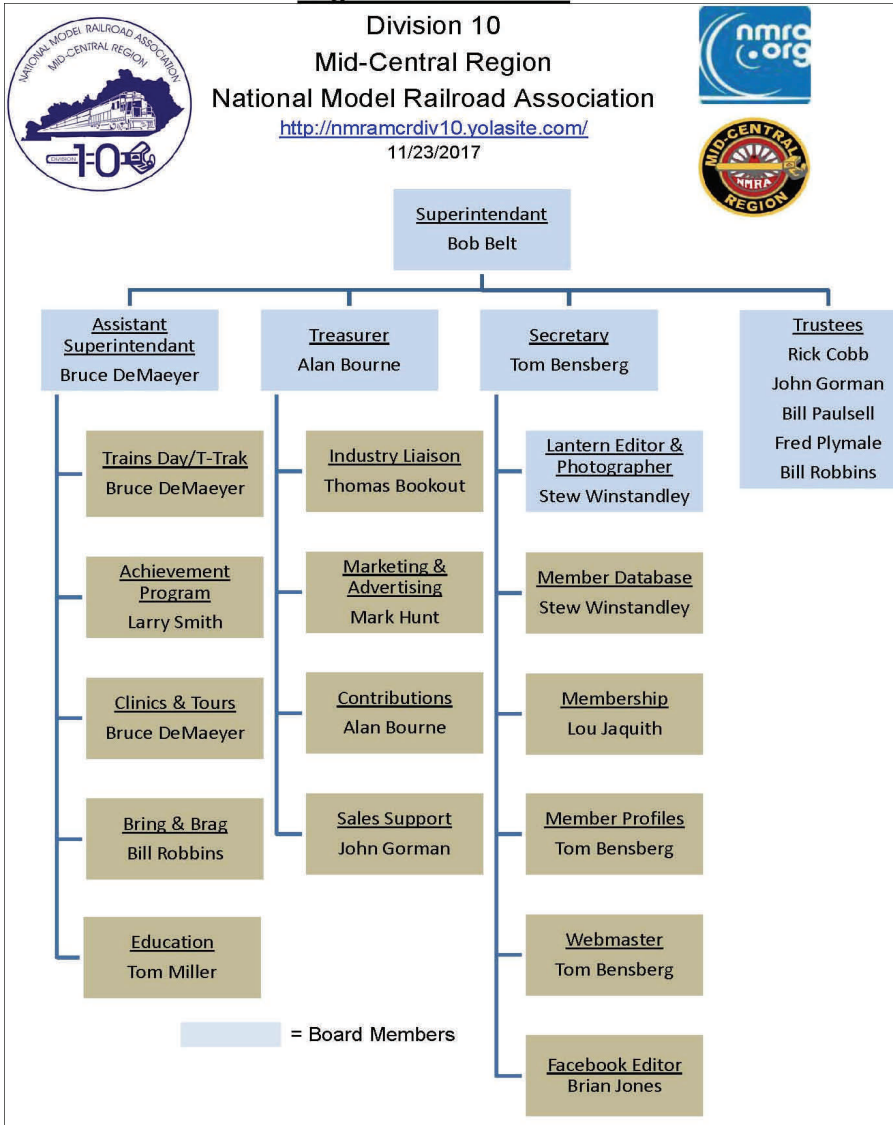
Tom Krill	10/17
Bob Ferguson	"
John Bowling	"
Lou Jaquith	"
Bill Marshall	9/2017
Clyde Burberry	"
David Batin	"
Ken Dickey	"
Harold Weinberg	"
Chester J Myers	5/2017
Raymond Cox	4/2017
Randy Coffman	2/2017
	"

Mark Hunt— paper and copying of printed materials

Fred Plymale—Slide Projector

John Gorman

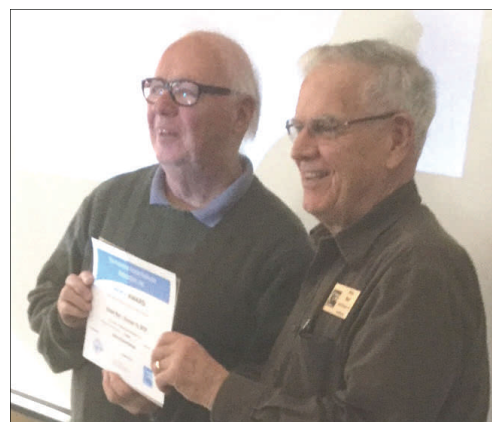
Alan Bourne—Treasurer's materials



Division 10 Treasurer's Report: Dec. 1, 2017— \$12,591.14; Expenses: Lantern 35.49, T-Trak Project 200.85; Deposits: 0.00; Balance: Dec. 31, 2017— \$12,355.32. Give or send your contribution to Alan Bourne, 438 Queensway Dr.. Lexington, KY 40502

On the internet, Division 10 website addresses are:

<https://www.facebook.com/NMRA.MCR.Div10/> and <https://nmramcrdiv10.yolasite.com/> and <http://trak.wikidot.com/nmra-mcr-division-10-the-kentucky-division>



Left: Larry Smith presenting a merit award to our Superintendent Bob Belt, at the January meeting.

Continued from page 1: his layout so he wouldn't have to spend as much time under the layout. Pete told me he had submitted the article almost a year before it got published. The point is – someone has to send in the article so the editors can work it. I know – we're different (well at least for the clinics), but suggestions are also always welcome for *The Lantern*.

Some other ideas about clinics can come from reviewing the other MCR Division newsletters. Maybe even publications from the adjoining regions – like SER or MWR. Just as a side thought – **Tom Bensberg** is a contributing editor of the NMRA Turntable. If you haven't seen it – you need to have your email registered on the NMRA website – and you can opt out if you don't want it.

Another great source of ideas is the *Model Railroad Hobbyist* electronic publication – especially the weekly issues to subscribers. Again, if you don't get this – you need to register – not only that, but it's FREE! FYI – the ideas are in the 'reader's posts' and the 'layout journals' sections of the weekly issues.

Bottom line – tell us what you want. Feedback is really welcome. — Bob Belt



Division 10 T-Trak Update

<http://ttrak.wikidot.com/nmra-mcr-division-10-the-kentucky-division>

On the above website page you will find a listing of Division 10 T-Trak members, and a listing of events in which Division 10 T-Trak modules will participate.

Photos of Division 10 modules were taken at the train show in Louisville. The two directly below are by Bruce DeMaeyer and Brian Jones. The bottom photo in this column is of a module by John Gorman. In the column to the right are multiple modules from Stew Winstandley, Bob Ferguson and in the top right hand corner there is a snow scene by Larry Smith and Harold Weinberg.



THE LANTERN

NEWSLETTER FOR NMRA MCR DIVISION 10

210 BRANNON RD.
NICHOLASVILLE, KY 40356-9711
WWW.DIV10-MCR-NMRA.ORG



FEB. 4, 1:30

TATES CREEK BRANCH LIBRARY

BRING AND BRAG

STEAM ENGINES

MEETING AGENDA

LAYOUT FILMING PROJECT,
BOB FERGUSON

TOUR

NONE

AROUND THE BEND

MON.	DAY	HOST	PLACE	EVENT / PROGRAM	TOURS	BRING & BRAG
Feb.	4	Div. 10	Tates Creek Library	Layout Filming Project, Bob Ferguson	None	Steam Engines
March	4	Div. 10	Beaumont Library	Smart Phone Throttles, Mark Underwood	None	Cabooses / Cabin cars
March	10 and 24	Div. 7 & 8	(7) 5050 Tylersville Rd, West Chester, Ohio / (8) 4615 Fegenbush Ln,	Flea Market / Train Show	Layouts	
April	7	KRM	St. Catherine Academy, New Haven, Ky.	Train Show & Sale, 9—2	N scale T-Trak layout	Div. 10 T-Trak modules will be included in the layout
April	8	Div. 10	Tates Creek Library	Foam Board & Model Builder Software, Bob Belt		

At the last Division 10 meeting we discussed **Wiseman Model Services** and the possibility of visiting Keith's shop northeast of Paris. At the February meeting we will ask for a show of hands of persons interested in going and then talking among ourselves the logistics of a visit. His website address is www.locopainter.com.