



THE LANTERN



AUGUST 2017

VOLUME 19, ISSUE 7&8

Report on the 1st “Trains Day at the Library”

by Bruce DeMaeyer

Thanks again for your support over the June 10-11 weekend. I think we had a very successful "Trains Day at the Library". It could not have been done without the members' help.

The event was held at the Lexington Eastside Branch Library.

The final tally was:

	Saturday	Sunday (half day)
Adults	50	35
Big Kids	7	3
Small Kids	45	33

We had three layouts operating on Saturday and four on Sunday. The horn on the HO Layout recorded 1,500 beeps.

We only recorded 4 or 5 happy-hands derailments, none serious. Reports were sent to the FRA immediately.

Larry Smith and Bob Ferguson built a new “starter HO layout”, and we had the full complement of the division's N scale T-Trak running with two trains.

Stew Winstandley brought his Z scale oval and ran a full train on it.

Ed Butcher explained the track plate, rail, spike, and air hose description at least 50 times. The resource table was a very busy place. Brian Jones and his team of John Seybold and Harold Weinberg amassed a full set of scale engines and buildings to demonstrate scale sizes. The free magazine table was practically all gone by the end of the second day.

Bob Ferguson brought three exquisite N-scale dioramas for display.

We had two objectives, the first was teaching the kids about model trains and how they operate, and the second was getting parents and grandparents to join the NMRA. We were very successful at achieving the first objective, but the second still needs some more work. The best we could expect is maybe two or three new members. We were approached by three or four adults for possible Rail Pass applications. John Gorman, Fred Plymale, Bob Belt and Alan Bourne manned the NMRA table.

We will propose doing this again next year. We now know what to expect. Trains Day photos below:



Above left: Bob Ferguson adding scenery to the HO layout.

Above right: Stew Winstandley's Z scale.



Division 10's N scale 6 module T-Trak layout



06.11.2017

Members left to right, Ed, Alan, Harold, Larry, Lou, Brian and Bruce at the Eastside Library.



For the NMRA MC Region officers link to www.midcentral-region-nmra.org/bod2.html

The Lantern is a monthly (except July) publication of Division 10, Mid Central Region (MCR), National Model Railroad Association. All opinions expressed herein are those of the authors, and do not necessarily reflect those of Division 10, the MCR, the NMRA, or anyone else.

In Recognition...

Many thanks to folks listed in the column below. They have given their support for our club. We encourage all NMRA members to help with financial support to *The Lantern* and our website and the Division 10 activities. **Send your monetary contribution to our Treasurer.**

To be listed here your contribution needs to be at least \$20 in cash, or material valued at \$50, or a total of 20 hours time within the last year. Division 10 receives NO monetary support from the NMRA or the MidCentral Region. Div.10 is recognized by the US government as a 501c3 corporation and your cash or material donations may be tax deductible.

Report materials or time to Stew Winstandley. To the right of each contributing member's name is the month of his or her latest contribution. Whenever one makes a contribution of money, material, or time, his or her date will be updated, and for new contributors, their name will be added. Anyone not making a contribution within 12 months will be dropped .

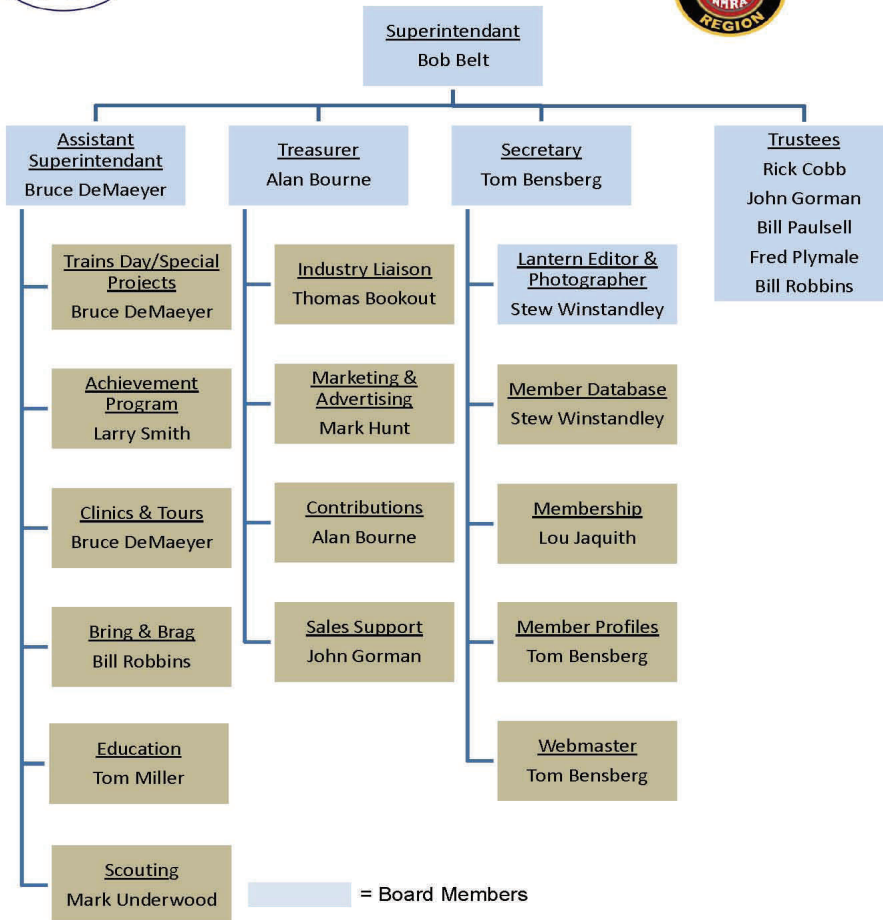
Chester J Myers	5/2017
Raymond Cox	4/2017
Randy Coffman	2/2017
Paul Evans	12/16
David Battin	10/16
Lou Jaquith	"
Franklin Miller	"
Tom Krill	"
Don Burris	9/2016
Clyde David Burberry	"
Bill Marshall	"
Harold Weinberg	"
John Bowling	"
	"

Mark Hunt— paper and copying of printed materials
 Fred Plymale—Slide Projector
 John Gorman
 Alan Bourne—Treasurer's materials

Organizational Chart

Division 10
 Mid-Central Region
 National Model Railroad Association

<http://nmramcrdiv10.yolasite.com/>
 3/4/2017



Division 10 Treasurer's Report:

May 1, 2017—\$12,249.69; Expenses: Lantern \$48.20, Trains Day \$122.29; Deposits: Contributions \$20.00, Sales \$40.00; Balance: June 30, 2017—\$12,139.20

Give or send your contribution to:

Alan Bourne, 438 Queensway Dr.. Lexington, KY 40502



The photograph above was taken at our 2016 visit to the Grosser's layouts. Your next opportunity is from 1 to 4 PM on Saturday, August 5th. The address for your navigation software is on page 4. If you haven't been there, the location is east of Eubank and is off of and south of KY 70 between US 27 and KY 39.

Photographs from recent meetings



The three photos to the right and below are of entries in the June Bring and Brag. To the right is Bruce DeMaeyer's Nine-Mile Tavern structure. The British passenger car below is an excellent scratch built model by Maelor Davies. Below that is Lou Jaquith's Paducah and Louisville locomotive. Great models!



Top left: Roger Clapham, left, receives his Golden Spike from Larry Smith. Left center: Our past superintendent Rick Cobb gets a Certificate of Appreciation from Bob Belt. Bottom left: Larry gives Bill Robbins an Achievement for Association Volunteer, and above, Stew Winstandley gets the same award.

THE LANTERN
NEWSLETTER FOR NMRA MCR DIVISION 10

210 BRANNON RD.
NICHOLASVILLE, KY 40356-9711
WWW.DIV10-MCR-NMRA.ORG



AUG. 5, 1-4:00

RENEE & RAY GROOSER'S

BRING AND BRAG

NONE

MEETING AGENDA

OUTING (2016 VIDEO IS IN
THE NMRA'S LATEST
"TURNTABLE" EMAIL)

TOUR

1145 LINN RD., EUBANK, KY
42567

AROUND THE BEND

MON.	DAY	HOST	PLACE	EVENT / PROGRAM	TOURS	BRING & BRAG
Aug.	5 (Sat.)	Div. 10	Renee & Ray Grosser's, near Eubank, Ky.	1—4 PM @ 1145 Linn Rd.	Grosser's O scale and 1:8 scale	
Sept.	3	Div. 10	Beaumont Library	Mountain Terrain Scenery, Bruce DeMaeyer	Roger Clapham	Bridge
Oct.	1	Div. 10	Tates Creek Library	EduTrain, Intro to Ops, Tom Miller		Caboose / Cabin car
Oct.	14	Div. 7	Lakota West High, 8940 Union Center Ave, West Chester, OH 45069	Model Train and Trade Show, 11—5	Show layouts	
Nov.	4	Div. 10				

Message from Bill Robbins: "I would like to buy your unneeded **HO** train stuff; locomotives, cars, structures, etc." My phone number is 859-230-7342 or email me at 1bear1lion@gmail.com