



THE LANTERN



MAY 2017

VOLUME 19, ISSUE 5

Superintendent's Report

The summer and fall programs are getting firmed up – see the Division 10 website calendar and page 4 for details.

The MCR Convention in Louisville is rapidly approaching in May. For those of you planning on entering the contest, please plan on bringing your model to the May 7th Division 10 meeting for a member preview.

For May 7th, we will be back at the Tates Creek Branch of the Lexington Public Library for 'DCC Consisting' by **Mark Underwood**. The tour will be at **Harold Weinberg's**. The Bring and Brag of your diesel locomotives has been moved to the June meeting.

June 4th we will be at the Beaumont Branch again and the clinic will be 'Cars AP'. **Bill Paulsell MMR**, **Larry Smith MMR** and I will be doing a combination panel/round table. We will have a Power Point show plus Merit Award display models and documentation.

Which brings pretty much introduces the theme of this jotting – modeling. And in particular – scale modeling – whether it is a layout, scenery, structures, rolling stock or locomotives. All of these areas have opportunities for recognition in the NMRA Achievement Program. But what I really want to talk about is the sheer FUN of putting stuff together. Plaques and certificates are nice but to me the reward is making a model and perhaps showing it off to other people with similar interests. I also get a kick out of looking at other people's models – mainly to take advantage of their skills and perhaps to hone mine.

Another challenge for me is to put together the next model – how can I make it better and more realistic? Even with all the new materials and tools available, the old techniques seem to blossom. Have you tried something new (to you) after reading or seeing something? How

about re-checking out your library for ideas? The official name for this is 'research' but curling up with an old magazine or book or even a U-Tube video is just another way of having fun.

I've been following the 'My Quest for M.M.R' series in the NMRA magazine and surprisingly enough, there are some good modeling tips imbedded in there. Another source of inspiration is the *Model Railroad Hobbyist's* weekly emails as well as the monthly issues. FYI – this is FREE – all you have to do is register. The MRH weekly 'Tips' and 'reader posts' usually have something of interest. Some of that stuff is way beyond my skill level but the ideas keep popping up that I'd like to try - like animation – but that is a whole other subject.

All this is to say that there are a bunch of resources out there including our fellow Division 10 members. We only have to look and ask. — *Bob Belt*



Bruce DeMaeyer presented an educational clinic on signaling at our April meeting. For instance, I learned how to tell whether a signal is intermediate or absolute. Above photo is of an absolute on Larry Smith's layout. — *Editor*



For the NMRA MC Region officers link to www.midcentral-region-nmra.org/bod2.html

The Lantern is a monthly (except July) publication of Division 10, Mid Central Region (MCR), National Model Railroad Association. All opinions expressed herein are those of the authors, and do not necessarily reflect those of Division 10, the MCR, the NMRA, or anyone else.

In Recognition...

Many thanks to folks listed in the column below. They have given their support for our club. We encourage all NMRA members to help with financial support to *The Lantern* and our website and the Division 10 activities. **Send your monetary contribution to our Treasurer.**

To be listed here your contribution needs to be at least \$20 in cash, or material valued at \$50, or a total of 20 hours time within the last year. Division 10 receives NO monetary support from the NMRA or the MidCentral Region. Div.10 is recognized by the US government as a 501c3 corporation and your cash or material donations may be tax deductible.

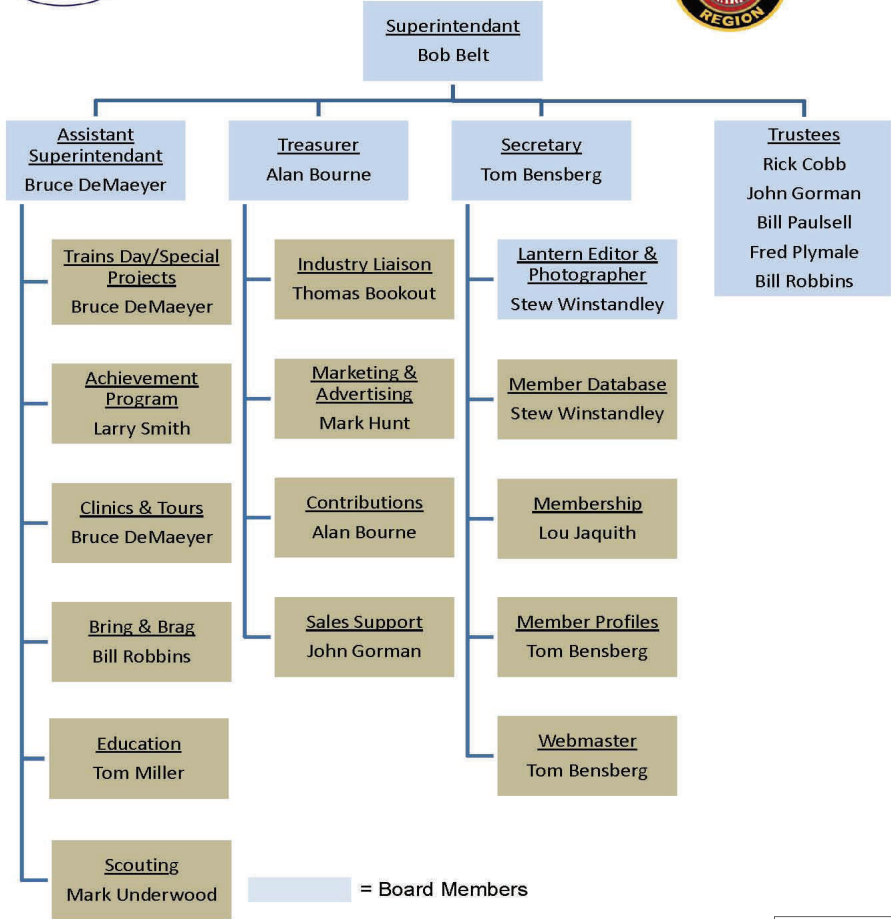
Report materials or time to Stew Winstandley. To the right of each contributing member's name is the month of his or her latest contribution. Whenever one makes a contribution of money, material, or time, his or her date will be updated, and for new contributors, their name will be added. Anyone not making a contribution within 12 months will be dropped .

Randy Coffman	2/2017
Paul Evans	12/16
David Battin	10/16
Lou Jaquith	"
Franklin Miller	"
Tom Krill	"
Don Burris	9/2016
Clyde David Burberry	"
Bill Marshall	"
Harold Weinberg	"
John Bowling	"
John Stokes	4/2016
Bill Robbins	"
Chester Myers	"
Clay Faulconer	"
Mark Hunt— paper and copying of printed materials	
Fred Plymaale—Slide Projector	
John Gorman	

Organizational Chart

Division 10
Mid-Central Region
National Model Railroad Association

<http://nmramcrdiv10.yolasite.com/>
3/4/2017



Division 10 Treasurer's Report:

March 1, 2017—\$12,229.89; Expenses: Lantern \$19.60,
Library Trains Day \$21.00, Ky. Annual Registration \$15.00;
Deposits: Sales \$60.00 Balance: March 31, 2017—\$12,234.29

Give or send your contribution to:

Alan Bourne, 438 Queensway Dr.. Lexington, KY 40502



**Mid-Central NMRA
Region Convention**

**May 18-21, 2017
Louisville, Kentucky**

Prototype Tour of Norfolk Southern's CNO&TP 2nd District



Left: Norfolk Southern's New River bridge, 389 feet above the river in Tennessee



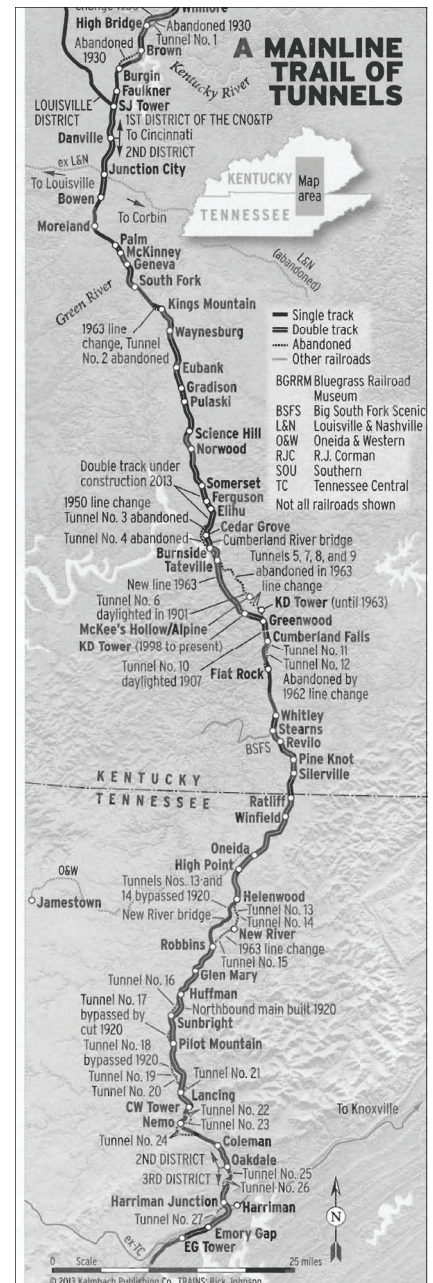
Members Bruce DeMaeyer, Randy Coffman, Larry Smith, Stew Winstandley and Thomas Bookout in Stearns, Ky.

During the weekend of April 7th through the 9th, five members of Division 10 took a trip south down the CNO&TP to its 2nd District from Somerset, Ky. to near Harriman Jct., Tenn. This is part of what is referred to as the "Rathole" division. The map to the right is from a December 2013 *TRAINS* Magazine "Rathole" article by Ron Flanary.

During the trip the members took prototype photographs of freight and MOW consists, track side scenery, signals, tunnel portals, and online structures. Norfolk Southern ran a couple of their heritage locomotives during the weekend. Some were run with one locomotive, such a long empty grain unit train, most with multiple units, one with an NS SD40. And one train had a DPU on the rear.



The clinic during the May 7th meeting will be presented by Mark Underwood on DCC consisting. If you've wanted to run multiple locomotives together on a train on your layout, as seen on the railroads, plan to attend this informative session.



© 2013 Kalmbach Publishing Co., TRAINS/Rick Johnson

THE LANTERN
NEWSLETTER FOR NMRA MCR DIVISION 10

210 BRANNON RD.
NICHOLASVILLE, KY 40356-9711
WWW.DIV10-MCR-NMRA.ORG



MAY 7, 1:30

TATES CREEK BRANCH LIBRARY

BRING AND BRAG

MCR CONVENTION ENTRIES

MEETING AGENDA

MARK UNDERWOOD, DCC
CONSISTING

TOUR

HAROLD WEINBERG, 8
LANDSDOWNE ESTATES, 40502

AROUND THE BEND

MON.	DAY	HOST	PLACE	EVENT / PROGRAM	TOURS	BRING & BRAG
May	7	Div. 10	Tates Creek Branch	DCC Consisting, Mark Underwood	Harold Weinberg	MCR Convention Entries
May	18-21	Div. 8	Galt House, Louisville	MCR 2017 Convention	go to website address shown below	
June	4	Div. 10	Beaumont Branch	Cars AP; Bill Paulsell, Larry Smith, Bob Belt	Larry Smith	Diesel Locomotives
June	10	Div. 10	Eastside Branch Library, 3000 Blake James Dr., 40509	Trains Day (more information in the next <i>Lantern</i>)		
July-Aug.	30-6	NMRA	Rosen Plaza Hotel, Orlando, Fla.	Orange Blossom Special National Convention	go to website address shown below	

MCR 2017 Pan American Convention, Louisville at the Galt House, May 18th—21st.

<http://div8-mcr-nmra.org/site/2017PanAmerican/>

NMRA 2017 National Convention, Orlando, Fla., July 30—August 6, 2017 www.nmra2017orlando.org