



THE LANTERN



DECEMBER 2017 VOLUME 19 ISSUE 12

Superintendent's Report

The Thursday evening session at Eastside Branch of the Library was interesting and pretty well attended. Video at <https://www.facebook.com/NMRA.MCR.Div10/videos/132044284167644/>. The object was to prepare four T-Trak double modules for the Great Train Show in Louisville, January 20-21, <http://trainshow.com/louisville/>. We started with the bare modules and the Kato Unitrak rail sections. One module was completed and 3 went home for finishing – that is -- to put down the track. The next step is to do the landscaping and several members have taken on the task. I won't name names since I'm not sure who is doing what – other than that **Bruce DeMaeyer** is managing the effort. We have another session at the Eastside Library Branch scheduled the 2nd Tuesday of January to review status for the January 20 train show. Note: this activity is an expansion of the Division's T-Trak oval – but the double modules are individually owned and we are trying to excite some more interest and participation through teams of builders/landscapers. **Bob Ferguson** and I are doing one; Bob's doing the hard part – the scenery. Bruce has been actively working several leads via Facebook and his contacts with the Kentucky T-trak group. Again, congratulations to **Brian Jones** for setting up the Division 10 Facebook page (<https://www.facebook.com/NMRA.MCR.Div10/>).

Now to the meat (meet?) of this rambling - it is all about ideas. Have you had an idea or inspiration for your layout? You know what I mean – the slap on the side of the head followed by the 'why didn't I think of that?' Anyhow, I get them from all kinds of different sources and I suspect you do also. One source that I like best is the visiting of other modeler's layouts. But I confess I recently got some of what I think are some pretty neat ideas/inspirations from

wandering around the internet. Like I've got a package of planetary gear micro-motors laying on the desk – for animation. The only problem is that ideas seem to wind up overtaking an ongoing project – read that as both modeling and 'honey-do' lists. Here goes the discipline again – start a project and carry it through to completion.

Oops –got distracted - back to ideas. These are all around us and many times come from places we wouldn't normally expect. Like visits to Michael's or Hobby Lobby or Cabela's stores. The globe for a lantern in HO scale is available from small glass beads from Michael's. The water surface on a lake is from Liquitex Gloss Gel. The 'shaker' for scenery flocking is a tea leaf strainer/basket. From other artist supplies – PanPastel artist pastels and Gallery Glass for light bulbs. How about Cabela's fishing supplies for sinkers and split-shot for weights? And good old US pennies for weights. And for grating on decks, fences, signal platforms - Tulle fabric. How about Nandina bush branches for tree structures (got that from **Brian Jones**)?

Another really good source of ideas is the national hobby magazines. By that I mean trying out something that has been mentioned in an article – and coming up with a different approach to the same or similar result. Hey, that could be an article for publication (whoopee – got in a plug for the Author certificate in the NMRA Achievement Program).

These are a few ideas – most aren't even original although I claim partial credit for the Liquitex Gel. That came from a display in the art section of Michael's. You too have ideas that are inspiration for all sorts of projects on your layout – how about sharing them?

— Bob Belt

.... Continued on page 3



For the NMRA MC Region officers link to www.midcentral-region-nmra.org/bod2.html

The Lantern is a monthly (except July) publication of Division 10, Mid Central Region (MCR), National Model Railroad Association. All opinions expressed herein are those of the authors, and do not necessarily reflect those of Division 10, the MCR, the NMRA, or anyone else.

In Recognition...

Many thanks to folks listed in the column below. They have given their support for our club. We encourage all NMRA members to help with financial support to *The Lantern* and our website and the Division 10 activities. **Send your monetary contribution to our Treasurer.**

To be listed here your contribution needs to be at least \$20 in cash, or material valued at \$50, or a total of 20 hours time within the last year. Division 10 receives NO monetary support from the NMRA or the MidCentral Region. Div.10 is recognized by the US government as a 501c3 corporation and your cash or material donations may be tax deductible.

Report materials or time to Stew Winstandley. To the right of each contributing member's name is the month of his or her latest contribution. Whenever one makes a contribution of money, material, or time, his or her date will be updated, and for new contributors, their name will be added. Anyone not making a contribution within 12 months will be dropped .

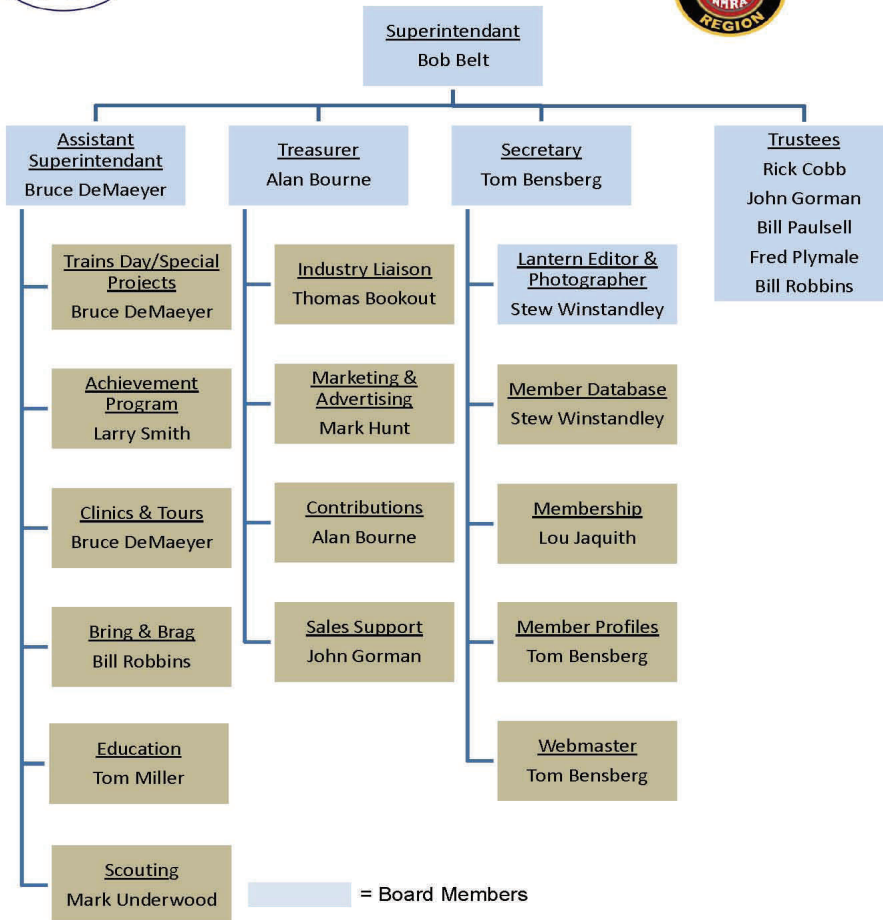
Tom Krill	10/17
Bob Ferguson	"
John Bowling	"
Lou Jaquith	"
Bill Marshall	9/2017
Clyde Burberry	"
David Batin	"
Ken Dickey	"
Harold Weinberg	"
Chester J Myers	5/2017
Raymond Cox	4/2017
Randy Coffman	2/2017
Paul Evans	12/16
	"

Mark Hunt— paper and copying of printed materials
 Fred Plymale—Slide Projector
 John Gorman
 Alan Bourne—Treasurer's materials

Organizational Chart

Division 10
 Mid-Central Region
 National Model Railroad Association

<http://nmramcrdiv10.yolasite.com/>
 3/4/2017



Division 10 Treasurer's Report: Oct. 1, 2017—\$12,376.29; Expenses: Lantern 14.70; Deposits: Lantern ad \$30.00, Sales (convention car) \$25.00, Donations: \$215.00; Balance: Oct. 31, 2017—\$12,631.59. Give or send your contribution to Alan Bourne, 438 Queensway Dr., Lexington, KY 40502

Nandina bush branches were mentioned as an idea on page 1. Here's a link to Nandina:

<http://www.clemson.edu/extension/hgic/plants/pdf/hgic1071.pdf>

How about a link to Tulle Fabric: <https://www.hobbylobby.com/Fabric-Sewing/Ribbons-Trim/Tulle/c/6-141-1195>

Bruce DeMaeyer's report on the T-Trak modules: At the Division 8's train show we set up our Division 10's T-Trak modules before the 10 AM opening. The modules

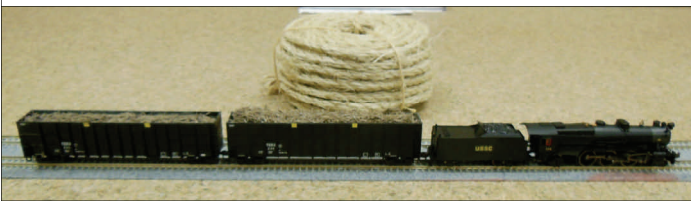


easily integrated with the modules from the "Kentucky T-Trak Group". The layout was linear

on two sides of the tables using our corner modules. The show had a block buster modeling crowd, ready to do some serious shopping. Please consider joining us in our building effort, as mention in Bob's column on page 1 (Facebook video link is included there). Our next modules inclusion will be in Louisville, January 20th.

Bob Belt's December Meeting Clinic: This clinic is a discussion and demonstration (live & videos) of animation on a layout. Animation is a combination of one or more motion, lighting or sound to give the effect of purposeful motion. There are many places on a layout where you can apply the effect of motion – in some cases real motion. The simplest is running a locomotive, followed by lighting and then sound. The next level is lighting a structure. This can be followed by a lanterns and finally by movement. One of the best sources for ideas may be YouTube videos.

November's Bring and Brag and a modeling idea: We had two entries in the November Anything Bring and Brag. Bob Belt brought in a bluetooth device to use with your smart phone for photography (more on that in the next column). Stew Winstandley brought in an N scale steam locomotive with high sided gondolas. The load in



the gondola is simulated cut sugar cane made from short strans cut from Sisal Rope. The rope is behind the consist in the above B&B photo.

Best Wishes for the Holidays and Happy Modeling!

Editor's comments on Santa Trains: (with a comment related to Bob Belt's B&B camera app) It's that time of the year to celebrate the holiday season. Many of the excursion lines, such as the BGRM, run trains with Santa that the kids can ride. There are five railroads (KCS, CP, CSX, INRD, and FEC) that I know of that run Santa or Holiday trains that stop many times to give to the waiting kids. One of these I've ridden on, and two I've seen. Included are some of my photos of these trains.

Saturday, November 18th, CSX ran the 75th Santa Train down the ex-Clinchfield route. For this trip CSX had the first Clinchfield F3, #800, delivered in 1948, on the



headend, with an ex-Seaboard SD45 painted as a Clinchfield locomotive. I photographed this train in Haysi, Va. One of the railfans in Haysi had a tripod and camera on top of a SUV that he controlled from his smart phone. The CRR 800, which has been upgraded to a F7, is going to the Royal Palm Rail Experience in Tavares, Fla. to be used on the *Polar Express* trains. *Trains Magazine* photo is at bottom right.

In December 2015, Thomas Bookout and I rode the FEC Santa Train from Jacksonville to Miami and helped Santa pass out gifts to the hundreds of children at stops along the route.



In December 2010, Larry Smith and I went up to observe the Indiana Rail Road's Santa Train. The left photo is of Larry in front of INRD 9025.



THE LANTERN

NEWSLETTER FOR NMRA MCR DIVISION 10

210 BRANNON RD.
NICHOLASVILLE, KY 40356-9711
WWW.DIV10-MCR-NMRA.ORG



DEC. 3, 1:30

TATES CREEK BRANCH LIBRARY

BRING AND BRAG

ANYTHING ANIMATED

MEETING AGENDA

ANIMATION, BOB BELT

TOUR

NONE

AROUND THE BEND

MON.	DAY	HOST	PLACE	EVENT / PROGRAM	TOURS	BRING & BRAG
Dec.	3	Div. 10	Tates Creek Library	Animation on Your Layout, Bob Belt	None	Anything Animated
Jan.	7	Div. 10	Beaumont Library	North American Air Brake Systems, Bruce DeMaeyer	Div. 10 T-Trak layout at library	Freight Cars with brake systems
Jan.	20-21	Great Train Show	Kentucky Exposition Center, Louisville	Train Show, 10—4	N scale T-Trak layout	Div. 10 T-Trak modules will be included in the layout
Feb.	4	Div. 10	Tates Creek Library			



209 Rosemont Gdn.
Lexington, KY 40503
Phone: 859-243-0099
<http://www.berkshiretrains.com>
E-mail: sales@Berkshiretrains.com



David Stephanski
Proprietor
Chris, Chief Engineer
Service, Restoration
of Model Trains

Tuesday, Wednesday, Thursday 7:30 pm - 9:00 pm
Saturday - 11:00 - 5:00
Sunday - 1:30 - 5:00

We Buy Model Trains -
Auction site: [http://
auction.intrains.com/](http://auction.intrains.com/)

Discounts for NMRA
members



Scan to view our Auction
site!



Scan to view our Website!