



THE LANTERN



OCTOBER 2017 VOLUME 19 ISSUE 10

Superintendent's Report

Unless otherwise noted, we will be alternating between the Beaumont and Tates Creek Library Branches – see the Calendar for specifics – October 1st is at Tates Creek. **Tom Miller** has an unforeseen conflict – so we've got a special guest for the October clinic – **Bob Weinheimer MMR** is coming to present one of his clinics. This is a treat since Bob is the Mid Central Region President. We welcome him both as a friend and as a returning clinician. Bob plans to touch on a couple of other National NMRA items as well – this should be interesting and informative – to get direct feedback from a National perspective. Bob also mentioned that Division 9 had a joint meeting/tour with Division 6 at Youngstown in September. Joint Division meetings are another idea Bruce & I have in the works – both with Louisville and Cincinnati – more details to follow as this develops – probably for 1st or 2nd Quarter 2018 for Saturday outings.

The upcoming November and December clinics both feature modelling – from a builder's perspective and about possibly some new ideas for your layout. Plan on attending and as usual, check the website and calendar in *The Lantern* for more details.

I rambled a bit about Fall and Winter projects last month. What are you doing on your workbench for your layout? The thought occurs to me that this might be a good 'filler/roundtable' topic for one of our upcoming meetings. Perhaps this could spark an idea that hasn't occurred to you before. And, by the way, not a bad thought for upgrading rolling stock, scenery, buildings and track work on your layout, just to mention a couple of possibilities. Has your backdrop become outdated or have you thought about adding something new to it? Or maybe even adding or completing a backdrop if you don't have one already.

Another topic I haven't thought about for some time is photography. This could range from rail-fanning photos to the good old armchair variety for ideas. Something else to try – do a photo shoot of rolling stock on your layout. There are lots of miniature cameras now available – some with Wi-Fi/Bluetooth capability. There are videos posted on YouTube and the ModelRailroader.com monthly newsletter usually has at least one featured. **Pete Birdsong MMR** ran a smart phone around his layout on a flatcar before he left our Division. **Joe Nichols MMR** did a fantastic job with a RDC car in filming his Delta Southern Railroad. He was kind enough to send me a DVD a couple years ago, and although dated it is something to watch.

The MCR Board of Directors meeting is coming up in October – which as Superintendent – I'll be attending. Does anyone have any hot topic they would like to address at the Regional level? I'm open to suggestions. I'll report back in either or both the November meeting or *The Lantern*. For those of you who don't know, the MCR Board meets twice yearly – in October and at the Regional Convention. This is a meeting of all the MCR officers, committee chairs and Division Supers. As an aside, I routinely get monthly publications (generally email links) from each of the MCR Divisions – like our *Lantern*. Most of these are available on the MCR website - http://www.midcentral-region-nmra.org/mcr_home2.html under the 'newsletter' tab.

Again, I'd like to emphasize re-energizing for the 2017-2018 modeling year. And get ready for the next MCR convention in Cincinnati next Spring. Hope to see you there – along with some great Division 10 Contest entries.

— Bob Belt





For the NMRA MC Region officers link to www.midcentral-region-nmra.org/bod2.html

The Lantern is a monthly (except July) publication of Division 10, Mid Central Region (MCR), National Model Railroad Association. All opinions expressed herein are those of the authors, and do not necessarily reflect those of Division 10, the MCR, the NMRA, or anyone else.

In Recognition...

Many thanks to folks listed in the column below. They have given their support for our club. We encourage all NMRA members to help with financial support to *The Lantern* and our website and the Division 10 activities. **Send your monetary contribution to our Treasurer.**

To be listed here your contribution needs to be at least \$20 in cash, or material valued at \$50, or a total of 20 hours time within the last year. Division 10 receives NO monetary support from the NMRA or the MidCentral Region. Div.10 is recognized by the US government as a 501c3 corporation and your cash or material donations may be tax deductible.

Report materials or time to Stew Winstandley. To the right of each contributing member's name is the month of his or her latest contribution. Whenever one makes a contribution of money, material, or time, his or her date will be updated, and for new contributors, their name will be added. Anyone not making a contribution within 12 months will be dropped .

Chester J Myers	5/2017
Raymond Cox	4/2017
Randy Coffman	2/2017
Paul Evans	12/16
David Battin	10/16
Lou Jaquith	"
Franklin Miller	"
Tom Krill	"
Don Burris	9/2016
Clyde David Burberry	"
Bill Marshall	"
Harold Weinberg	"
John Bowling	"
	"

Mark Hunt— paper and copying of printed materials

Fred Plymale—Slide Projector

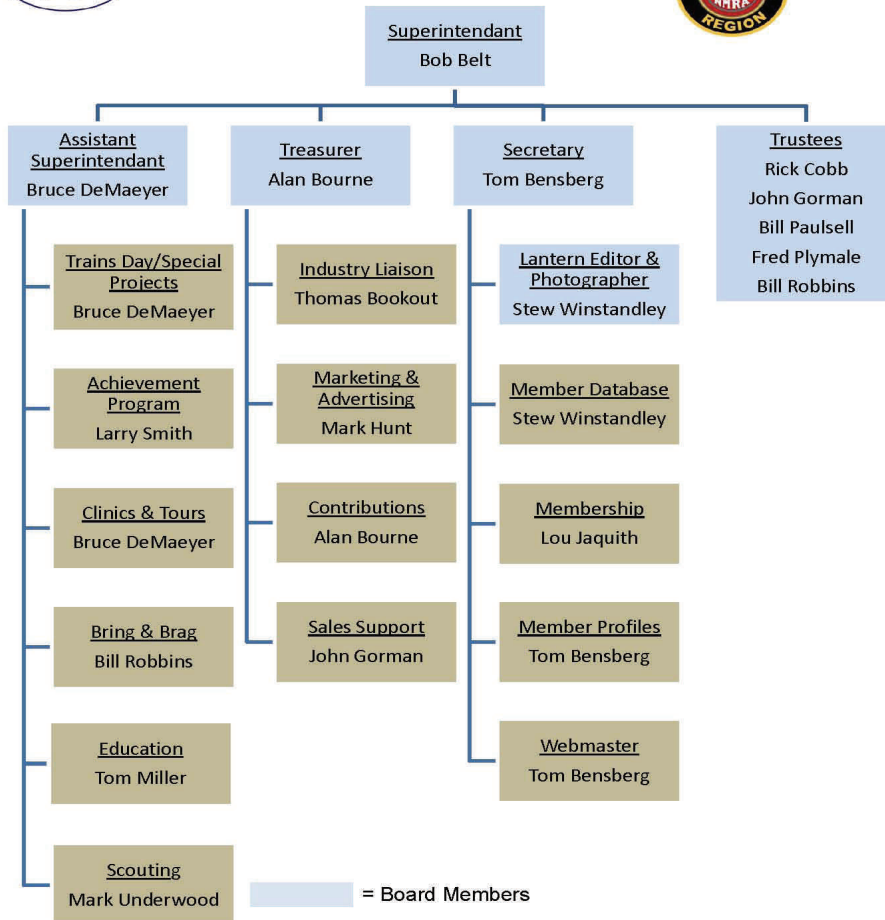
John Gorman

Alan Bourne—Treasurer's materials

Organizational Chart

Division 10
Mid-Central Region
National Model Railroad Association

<http://nmramcrdiv10.yolasite.com/>
3/4/2017



Division 10 Treasurer's Report: Aug. 1, 2017—\$12,139.20; Expenses: Lantern \$43.52; Deposits: Sales (donated items) \$90.00; Balance: Aug. 31, 2017—\$12,185.68. Give or send your contribution to Alan Bourne, 438 Queensway Dr.. Lexington, KY 40502



209 Rosemont Gdn.
Lexington, KY 40503
Phone: 859-243-0099
<http://www.berkshiretrains.com>
E-mail: sales@Berkshiretrains.com

David Stephanski
Proprietor
Chris, Chief Engineer
Service, Restoration
of Model Trains




Tuesday, Wednesday, Thursday 7:30 pm - 9:00 pm
Saturday - 11:00 - 5:00
Sunday - 1:30 - 5:00

We Buy Model Trains -
Auction site: [http://
auction.intrains.com/](http://auction.intrains.com/)

Discounts for NMRA
members




Scan to view our Auction site! Scan to view our Website!

THE FUN OF BUILDING A MODEL RAILROAD



By DR. THOMAS W. MILLER, PH.D, ABPP, MCR Education Chairman

Model railroading is a wonderful journey through life. Since retiring, it has provided me an important ingredient in adjusting to these senior years. Specifically, it has given me the opportunity to utilize the talents I've accumulated over a lifetime. Creating a miniature world makes scale-model railroading such a great hobby. Model railroaders find a thrill in studying the world of miniature.

Even though a precision model of a locomotive is a work of art in its own right, building a model railroad that evokes a sense of time and place is the heart of this hobby. Many scale model railroaders recall their childhood, when a train set allowed them to travel through an imaginary world. As adults, they find they have the means and skills to bring that world to life.

My earliest recollection of railroads was when my dad returned home after World War II in 1946. My mother took me to a beautiful historic railroad terminal to meet him. I was awed by the huge brick structure with its high vaulted ceilings and rows of dark hardwood curved benches with high backs.

My inspiration for modeling were the huge steam locomotives and remembering the steps up to the platforms where the trains would come into the terminal. I remember my dad in his Army uniform on that platform beside the train that brought him home. The engines and cars seemed so large and noisy. The following Christmas, there was a circle of track around the tree and a steam locomotive pulling a set of freights cars, including a box car, log car and a caboose. It became my favorite toy. To this day, that original train set brings back to me many great memories of my childhood.

Model railroading provides hobbyists an opportunity to be creative, so my S scale layout changes with every new idea that comes to mind. My current layout reflects living in New York along the New York Central Railroad and the Erie Lackawanna Railroad in Northeastern Pennsylvania among the coal industry. Next I lived in Central Connecticut near the New Haven Railroad line and I finally settled in Kentucky among the Norfolk and Southern, Louisville and Paducah, Southern and R.J. Corman railroads. My layout highlights towns and villages along this journey, depicting both the coal mining and processing region of Northeastern Pennsylvania and the horse industry of Central Kentucky.

In designing my layouts over the years, I became intrigued by the tunnels, mountains, streams and rivers that patterned the countryside. The freight and passenger cars are representative of the 1940s and 1960s with a few contemporary options, including some scratch-built models of flat cars, bulkhead pulpwood cars and other freight cars. The layout is wired for lighting and to give it a natural feel, I've added the sounds of both steam locomotives and diesels, accompanied by hissing, whistles, bells ringing and the rumble of trains headed down the track of a lifetime hobby.

The above article was published in the Sept/Oct 2017 *Living Well 60+ Magazine*, and is available online at: <http://livingwell60plus.com/the-fun-of-building-a-model-railroad.html>



We've all seen railroad diamonds. In the photo to the left is a newer diamond where the single track is elevated above the double track mainline. Trains on the mainline can run at normal track speed since there's no break in the rails. The single track has a slow speed restriction. This type of diamond didn't exist in the steam era. On a recent MILW 261 4-8-4 excursion, the sand pipes got caught on the rail.

THE LANTERN

NEWSLETTER FOR NMRA MCR DIVISION 10

210 BRANNON RD.
 NICHOLASVILLE, KY 40356-9711
 WWW.DIV10-MCR-NMRA.ORG



OCT. 1, 1:30

TATES CREEK BRANCH LIBRARY

BRING AND BRAG

CABOOSE / CABIN CAR

MEETING AGENDA

GETTING STARTED IN
 OPERATIONS, BOB WEINHEIMER

TOUR

NONE

AROUND THE BEND

MON.	DAY	HOST	PLACE	EVENT / PROGRAM	TOURS	BRING & BRAG
Oct.	1	Div. 10	Tates Creek Library	EduTrain, Getting Started in Operations, Bob Weinheimer MMR	None	Caboose / Cabin car
Oct.	14	Div. 7	Lakota West High, 8940 Union Center Ave, West Chester, OH 45069	Model Train and Trade Show, 11—5	Show layouts	
Nov.	5	Div. 10	Beaumont Library	Introduction to Gauge 1, Maelor Davies	Bruce DeMaeyer	Anything
Dec.	3	Div. 10	Tates Creek Library	Animation on Your Layout, Bob Belt		Animated Structure
Jan.	7	Div. 10	Beaumont Library			

In the October EduTrain clinic, we take a high level approach to the sorts of issues someone starting out in operations might consider. Probably one of the most important is to determine how the operation is intended to interact with the rest of the world. Other issues include train authorization methods, how to determine where cars should go, ideas on car fleets, and a consideration of the era. Options to consider for each of these areas will be presented.