



THE LANTERN



NOVEMBER 2016

VOLUME 18, ISSUE 11

Superintendent Report

After writing the *Ramblings* for the last couple years, it is a bit intimidating to kick off the Superintendent Report. Perhaps the best way is to review a couple happenings over the last couple months.

First – the MCR Board of Directors meeting in Columbus back in September. I represented the Division for Rick who had a family illness. The meeting was held in Schmidts restaurant in Columbus, as it has been several times before. It is nice to see and renew friendships with some of the ‘names’ in the Region. To business – the meeting was called to order by the President, Steve Kaplan and off we went to the agenda - Committee reports, Division Reports, Old Business, New Business and Miscellaneous – which was generally pretty dry as could be expected. One highlight was that our old friend Bob Weinheimer from the Coal Division is the MCR President – elect and will be installed at the 2017 MCR convention banquet in Louisville. The 2018 MCR convention will be in Cincinnati and 2019 convention in Division 1 (Akron-Canton-Youngstown). Bob promptly put out a call for anyone interested in becoming the *Kingpin* editor. Russ Weiss gave an update for 2017 and then Bob Shreve did likewise for the 2018 convention. Dick Briggs talked about the Achievement Program and asked that the word get out to not overdo the requirements – they are not that difficult. Steve Kaplan noted that there are still MCR schoolhouse kits available (N, O and S) and would be advertised in the upcoming NMRA, Model Railroader, and RMC magazines. (FYI – I have 4 HO kits on consignment.) On membership, the Divisions range from 260+ highest to less than 40. Division 10 is in the lower end with fewer than 70 members.

During the Division reports, Division 3 (Miami Valley) reported that they have a new venue for their train show on November 5th & 6th. The Hara Arena location has been replaced by the ex-Elder Beerman store in the Upper Valley Mall in Springfield, Ohio. Division 9 (Coal) had some interesting thoughts on their M.A.D.D. (Models, Artifacts, Displays, Discussions) activities.

Second – a few thoughts on Bring and Brag. This is an opportunity for Division 10 modelers to show and talk about a model they personally feel good about – either in looks, what they’ve been able to accomplish, or get rewarded by recognition of other modelers.

It is NOT judging – that is a totally different subject. Yeah, we ‘scored’ models a couple years ago and awarded ‘modeler of the year’ based on those scores; but that seemed to upset some of the members and was clearly miss-understood by many. Phooey on rules for this – let’s have fun with modeling – no rules, just bragging (and I think everyone likes to do at least a little of that).

For now, let’s have no guidelines/schedule/recommended list for the monthly meeting. Tying in with the clinic as we did in October seems to be one good approach. On the other hand, I think everyone should decide for themselves what they would like to show others and when. It doesn’t have to be a new model – it could be one built 10 years ago or longer. As long as it’s portable and has some relation to model railroading:

----- BRING IT & SHOW US & TALK
ABOUT WHAT YOU DID -----

Let’s keep it simple – and bring and brag (pun intended) about something we’ve done with our skill set. Part of the idea of the B&B is to further develop modeling skills by showing and seeing examples.

I’m going to suggest to Stew that he take photos of all the models presented at each meeting and use those to ‘bulk up’ the *Lantern*. Besides, I like to see published pictures – especially of what I’ve done – and I think others do too – that of what they have done.

— Bob Belt

October meeting review: Our ‘train talk’ guys presented a clinic about keeping track and wheel sets clean. The entire presentation can be read on the web at nmramcrdiv10.yolasite.com/resources/Articles/ by clicking on the 10-2-16 article link. Keep your track and wheel surfaces as smooth as possible to minimize dirt.



For the NMRA MC Region officers link to www.midcentral-region-nmra.org/bod2.html

The Lantern is a monthly (except July) publication of Division 10, Mid Central Region (MCR), National Model Railroad Association. All opinions expressed herein are those of the authors, and do not necessarily reflect those of Division 10, the MCR, the NMRA, or anyone else.

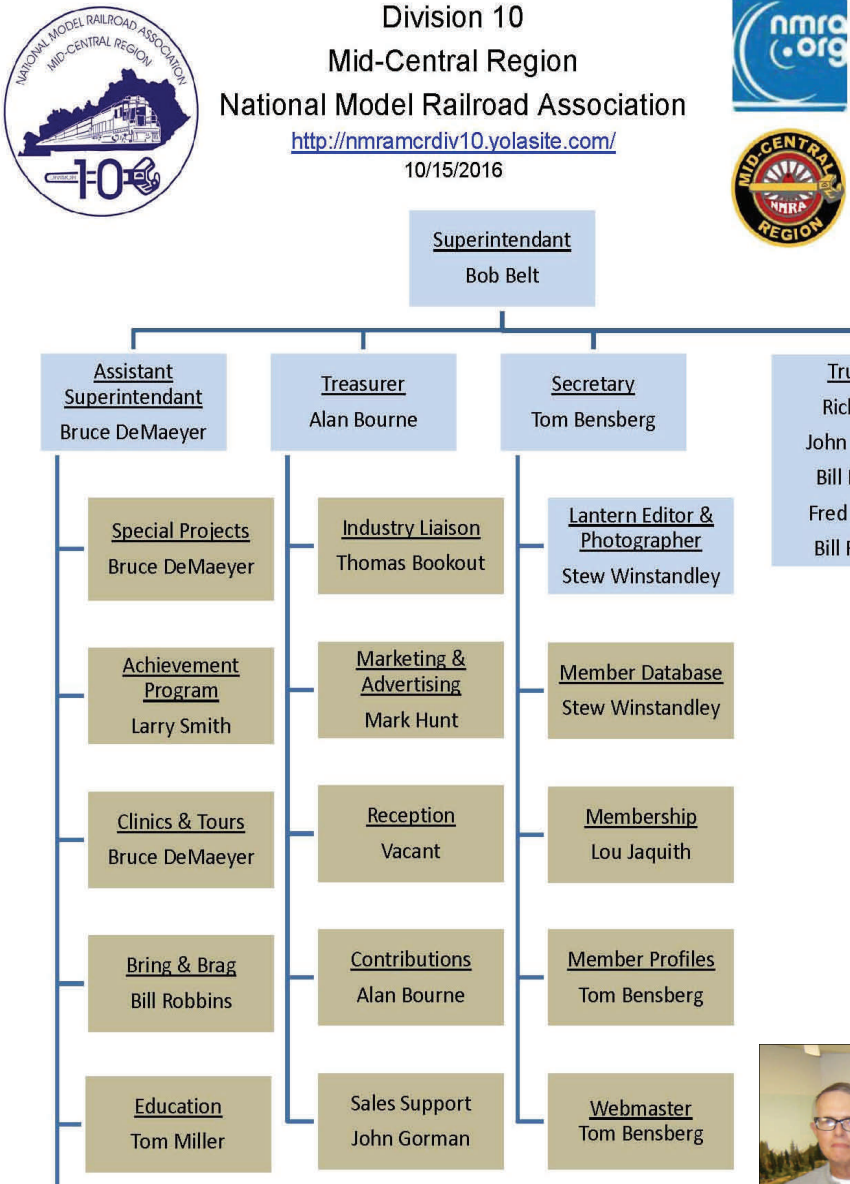
In Recognition...

Many thanks to folks listed in the column below. They have given their support for our club. We encourage all NMRA members to help with financial support to *The Lantern* and our website and the Division 10 activities. **Send your monetary contribution to our Treasurer.**

To be listed here your contribution needs to be at least \$20 in cash, or material valued at \$50, or a total of 20 hours time within the last year. Division 10 receives NO monetary support from the NMRA or the MidCentral Region. Div.10 is recognized by the US government as a 501c3 corporation and your cash or material donations may be tax deductible.

Report materials or time to Stew Winstandley. To the right of each contributing member's name is the month of his or her latest contribution. Whenever one makes a contribution of money, material, or time, his or her date will be updated, and for new contributors, their name will be added. Anyone not making a contribution within 12 months will be dropped .

Don Burris	9/2016
Clyde David Burberry	"
Bill Marshall	"
Harold Weinberg	"
John Bowling	"
John Stokes	4/2016
Bill Robbins	"
Chester Myers	"
Clay Faulconer	"
Raymond Cox	2/2016
Rick Cobb	12/15
Lou Jaquith	10/15
Tom Krill	"
Ed Andres	"
Mark Hunt - paper and copying of printed materials	



Division 10 Treasurer's Report:

Sept. 1, 2016—\$13,022.06;
 Expenses: Church \$500.00, One Call Now \$189.39, Name Tags \$66.00; Deposits:
 Contributions: \$90.00, Nmae Tag Sale \$8.00
 Balance Sept. 30, 2016—\$12,364.67

Give or send your contribution to: Alan Bourne, 438 Queensway Dr.. Lexington, KY 40502



Division 10's officers: from left to right, Tom Bensberg, Secretary; Bruce DeMaeyer, Assistant Superintendent; Alan Bourne, Treasurer; and Bob Belt, Superintendent. Bob was our Asst. Super., and Tom is continuing as Secretary.



Fred Plymale received the second annual Division 10 Wendell Greer Award for Excellence at the October meeting. Presenting the award to Fred (left) is our new superintendent, Bob Belt. Thanks to Fred as he was Division 10's founding member.



Above and left are scenes from Fred Plymale's outstanding layout that our members visited after the October meeting. It is always a pleasure to see his layout. At the November meeting Fred will host a clinic discussion on mistakes made in building a layout. He will begin the clinic with photographs of his first layout. This will be another discussion session where members can comment on their own layout experiences that needed correction or reworking.

In past issues of *The Lantern*, you've read profiles on some of our members. This column will be continued in the future. On the web at <http://nmramcrdiv10.yolasite.com/officers-and-directors.php> you'll be able to read profiles on our officers and our committee heads. The Division 10's web site contains a lot of usefull modeling information, check it out if you haven't recently been to it.

THE LANTERN
NEWSLETTER FOR NMRA MCR DIVISION 10

210 BRANNON RD.
NICHOLASVILLE, KY 40356-9711
WWW.DIV10-MCR-NMRA.ORG



NOVEMBER 6, 1:30

TATES CREEK BRANCH LIBRARY

BRING AND BRAG

SEE COLUMN ON PAGE 1

MEETING AGENDA

MISTAKES MADE BUILDING A
LAYOUT—FRED PLYMALE

TOUR

NONE

AROUND THE BEND

MON.	DAY	HOST	PLACE	EVENT / PROGRAM	TOURS	BRING & BRAG
Nov.	6	Div. 10	Tates Creek Branch Library	Mistakes Made Building a Layout—Fred Plymale		Read column 2, page 1
Nov.	19	Div. 8	Lodge 5, 4615 Fegenbush Ln., Louisville, Ky.	Model Train and Trade Show, 10 to 3	Layouts at the show	
Dec.	4	Div. 10	Beaumont Branch Library	Modeling an engine in brass, Bob Belt		
Jan.	8	Div. 10	Tates Creek Branch Library		Tom Bensberg, modern day N scale	
Feb.	5	Div.10	At a library	Steam—Joe Holbrook	Lou Jaquith—Winter Garden layout tour	

At the November meeting, in addition to Fred’s clinic, members of MCR Division 8 will be in attendance to present information about the 2017 Pan American Convention, to be held in Louisville at the Galt House, May 18th—21st.

<http://div8-mcr-nmra.org/site/2017PanAmerican/>