



THE LANTERN



JANUARY 2016

VOLUME 18, ISSUE 1

Superintendent's Report

Keep modeling fun

Rick Cobb

Editor's note: Rick is currently in Nashville with his ailing mother. In place of his monthly column, the following is a comment from the acting NMRA Marketing Director.

Today's young are more interested in that little black box called a phone and seem to dwell on its ability to do almost everything. Our population is aging, adults are working more and the hobby is seeing declining in numbers.

Bringing back the heyday of model railroading is probably an impossible task, but developing new and exciting elements of the hobby across a broad spectrum of age related hobbyists or potential model train enthusiasts, might just work. This is going to be a challenge and will require thinking "out of the box" and the help of everyone to refine, create, and implement new solutions to attract a new generation of model railroaders and retain many of the existing members. I look forward to working with everyone in this challenging position and having your help to excite, inform and grow the NMRA.

Frank C. Baker

The clinic presented by Bruce DeMaeyer at the December meeting can be found on the web at: <http://nmramcrdiv10.yolasite.com/resources/Articles/NMRA%20Yard%20Clinic%20120615.pdf>, Bruce will be continuing this subject at our January meeting.

Assistant Superintendent Ramblings

Clinics:

January – Bruce DeMaeyer – Building Staging Yards for Operation. This is a follow on to the December clinic to show more of the development of Bruce's layout. His open house will follow (see below).

February – Bob Belt – RTV Molds and Resin Casting. This will cover methods and techniques. It will also show some of the detail

stuff for the brass McKeen car I've been building that many of you have seen at the Tuesday night gatherings.

March – Mark Underwood and an introduction to T-Trak modules (title to follow). T-TRAK is a modular N scale model railroad system based on standards for module size, track placement, track interface, and electrical connections. The minimal standards allow for a wide range of flexibility in design yet still maintain interoperability with all modules built per the standards.

April – Tom Bensberg – Internet Model Railroad Resources. We'll do this at one of the libraries (to be announced) so Tom has good WiFi connectivity and can use the Division 10 projector and screen.

May/June – A panel/member discussion about progress on our Division 10 layouts. I understand this was done a couple years ago and it would be interesting to see what progress has been made.

Tours & Open houses:

January – out to Bruce DeMaeyer's following the clinic – to see and experience what he was talking about in both December and January clinics.

February and March – nothing yet. Anyone want to volunteer? We may work in a Saturday trip to the EnterTrainment Junction in Cincinnati – weather permitting.

Bob Lawson is setting up visits to both his and several other Cincinnati layouts on Saturday, April 16th (3rd Saturday). We should plan on car-pooling up for about 3-4 hours of visits.

Note that the MCR 2016 convention in Columbus is the last week of April and the NMRA National is in Indianapolis the week of the 4th of July.

Other

Still working the Division 8 operators interchange. I'll keep you posted.

—Bob Belt





For the NMRA MC Region officers link to www.midcentral-region-nmra.org/bod2.html

The Lantern is a monthly (except July) publication of Division 10, Mid Central Region (MCR), National Model Railroad Association. All opinions expressed herein are those of the authors, and do not necessarily reflect those of Division 10, the MCR, the NMRA, or anyone else.

In Recognition...

Many thanks to folks listed in the column below. They have given their support for our club. We encourage all NMRA members to help with financial support to *The Lantern* and our website and the Division 10 activities. **Send your monetary contribution to our Treasurer.**

To be listed here your contribution needs to be at least \$20 in cash, or material valued at \$50, or a total of 20 hours time within the last year. Division 10 receives NO monetary support from the NMRA or the MidCentral Region. Div.10 is recognized by the US government as a 501c3 corporation and your cash or material donations may be tax deductible.

Report materials or time to Stew Winstandley. To the right of each contributing member's name is the month of his or her latest contribution. Whenever one makes a contribution of money, material, or time, his or her date will be updated, and for new contributors, their name will be added. Anyone not making a contribution within 12 months will be dropped .

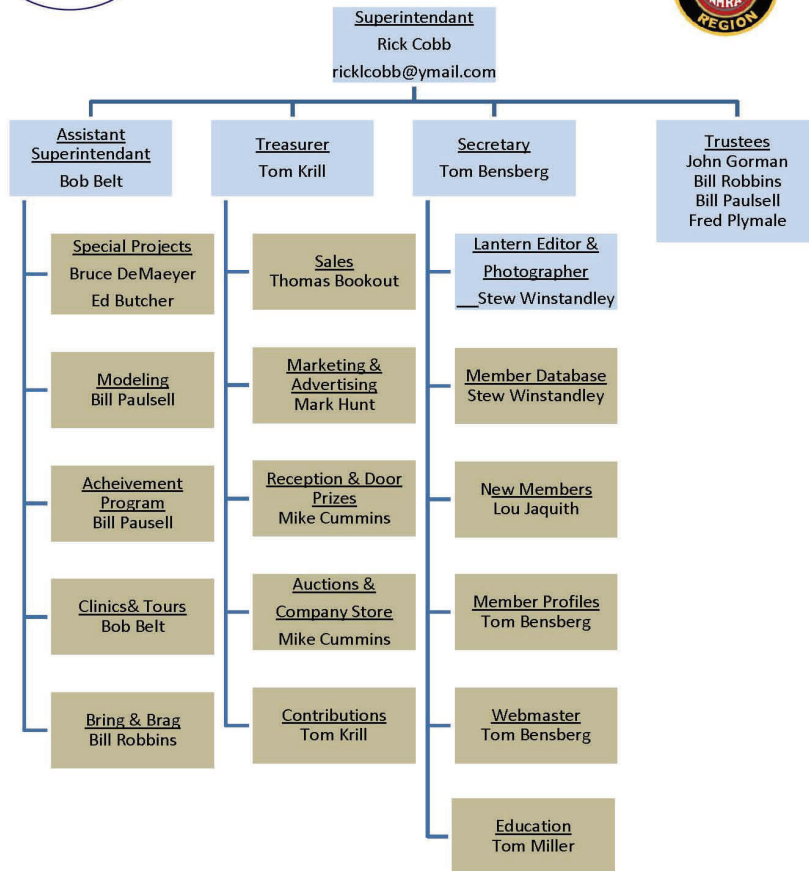
| | |
|---------------------|--------|
| Lou Jaquith | 10/15 |
| Tom Krill | " |
| Ed Andres | " |
| Don Burris | 8/2015 |
| Dave Battin | " |
| Paul Evans | " |
| Henry Sneed Jr. | " |
| Harold Weinberg | " |
| John Bowling | 9/2015 |
| Randy Coffman | 6/2015 |
| Chester Myers | " |
| Bill Robbins | " |
| Clyde Burberry | 4/2015 |
| Ron Kercheval | " |
| Franklin Miller | 1/2015 |
| Alan & Judy Bourne | 12/14 |
| Ray & Renee Grosser | 12/14 |
| Raymond Cox | 10/14 |
| Bill Paulsell | " |

Organizational Chart

Division 10
Mid-Central Region
National Model Railroad Association



<http://nmramcrdiv10.yolasite.com/>
7/15/2015



Left: Florida East Coast Railway's Saint Augustine business car decorated for the holidays. Photo taken by Stew Winstandley in Miami, Fla.

Happy New Year to all.

Division 10 Treasurer's Report:

Nov.1, 2015—\$12,954.63;
Expenses: Lantern \$39.20;
Deposits: Contributions \$80.00;
Balance Nov. 30, 2015—\$12,995.43

Give or send your contribution to: Tom Krill, 3624 Windfair Ln. Lexington, KY 40515



Above: Three dioramas were entered into the December Bring and Brag judging. Top: An early 1900's coal tippie built by Paul Evans. Middle: A fuel unloading facility entered by Bob Ferguson. Bottom: A second entry from Bob Ferguson.

2015-2016 Bring and Brag Schedule

- January—Flat car with load
- February—Open top hopper or a log car
- March—Railroad Car (judged)
- April—Tank car
- May—Kit bashed car (freight, passenger or MOW)
- June—Structure (to be judged)

Member Profile—Bill Paulsell

I received my first train, a Marx Commodore Vanerbilt passenger train when I was about six years old. Later I saved allowance money and split the cost with my Dad for a freight set. I think the total cost was \$14.00. Eventually, I graduated to Lionel and, in Junior High got into HO. All of the above were enjoyed enormously.

HO in those days, late 1940's, was a far cry from what we have now. My first loco was a Varney Dockside, a 0-4-0 tank engine. It cost \$15 and was a kit. You had to clean off the flash, paint it, and put it together. Paul Evans, in our club, gave me one he had when he was in the hobby. I treasure it. Cars had wood roofs, sides, and ends covered with printed paper. The Mantua couplers everyone used looked terrible but worked flawlessly. I had a three by seven layout, an oval with two two track yards, and many cardboard structures that were available then.

Atlas switches were also kits. You put down a paper template and built the switch on top.. Many of us used auto choke cables to throw switches. Power packs often had no speed control, and we used army surplus rheostats.

The arrival of cars with metal painted sides and, later, plastic body shells were great steps forward. Roundhouse came up with a metal working knuckle couple that looked pretty good, but was later superseded by KD's.

I had the privilege of working part time at Bobbye Halls Hobby Shop in Dallas. The Hall's were very good to me. A few years ago I saw Mrs. Hall at a national NMRA convention and it was fun to talk about the past.

Like many, I dropped out of the hobby in high school, but never lost interest in it. College, seminary, and graduate school left no time for it. However, when I was trying to complete a dissertation for a doctorate I said that if I ever finished it I would build a layout again. When all other motivation failed, that kept me going. After I received the coveted diploma my wife Sally said, "It's time to get your model railroad equipment." Let me tell you, she is an angel from heaven. She has supported my participation in the hobby, likes to see the latest thing on the layout, and has attended many conventions with me.

Today we have highly detailed equipment, DCC, more reliable locos, and many new things are coming.

I am very thankful for the NMRA and especially for our division. I have learned so much from the members and they have inspired me in many ways. There are many in our club who are much better modelers than I, but there is no one who loves the hobby more than I do. I am thankful for all the friendships, the readiness to assist, and all the opportunities that have come from being a member of such a fine group.

— Bill

THE LANTERN
NEWSLETTER FOR NMRA MCR DIVISION 10

210 BRANNON RD.
NICHOLASVILLE, KY 40356-9711
WWW.DIV10-MCR-NMRA.ORG



JAN. 3, 1:30

BRING AND BRAG

FLAT CAR WITH A LOAD

MEETING AGENDA

BRUCE DEMAEYER— BUILDING
STAGING YARDS FOR
OPERATIONS

TOUR

BRUCE DEMAEYER'S, 1120
KIDDS MILL RD, VERSAILLES

AROUND THE BEND

| MON. | DAY | HOST | PLACE | EVENT / PROGRAM | TOURS | BRING & BRAG |
|-------|-----|---------|--|---|--|------------------------------|
| Jan. | 3 | Div. 10 | Central Christian Church, Watkins Bldg., E. Short Street | Buildings Staging Yards for Operations—Bruce DeMaeyer | Bruce DeMaeyer | Flat Car with load |
| Feb. | 7 | Div. 10 | Central Christian Church, Watkins Bldg., E. Short Street | RTV Molds and Resin Casting—Bob Belt | None | Open top hopper or a Log car |
| March | 6 | Div. 10 | Central Christian Church, Watkins Bldg., E. Short Street | Introduction to T-Trak Modules—Mark Underwood | None | RR Car (judged) |
| April | 3 | Div. 10 | Library | Internet Model Railroad Resources—Tom Bensberg | Saturday, April 16th—Bob Lawson, Monroe, | Tank Car |
| April | 28- | Div. 6 | Embassy Suites, Dublin, Ohio | 2016 MCR Convention | Convention Website Address below | |

http://2016convention.div6-mcr-nmra.org/home_B.html

April 28, 29, 30 and May 1, 2016