

Dual-Magnet Uncoupling

Chuck Davis



05/18/10

1

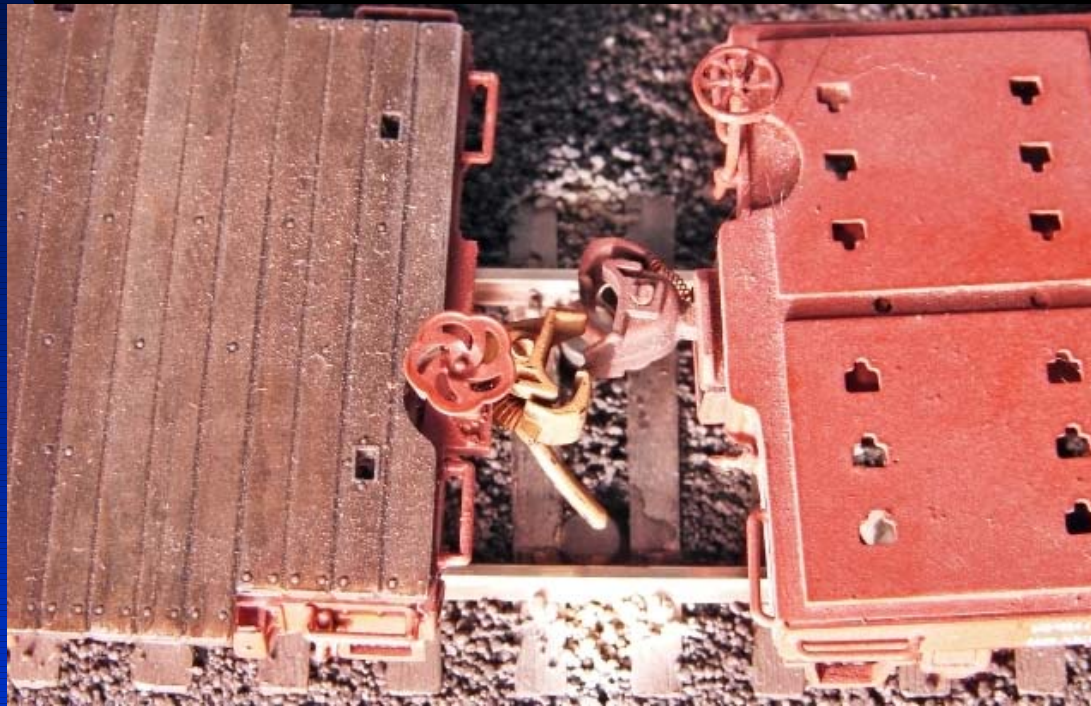
Background

- PA native
- <http://members.cox.net/mylvrr>
- MMR 425
- RMC November 2008



Topics of Discussion

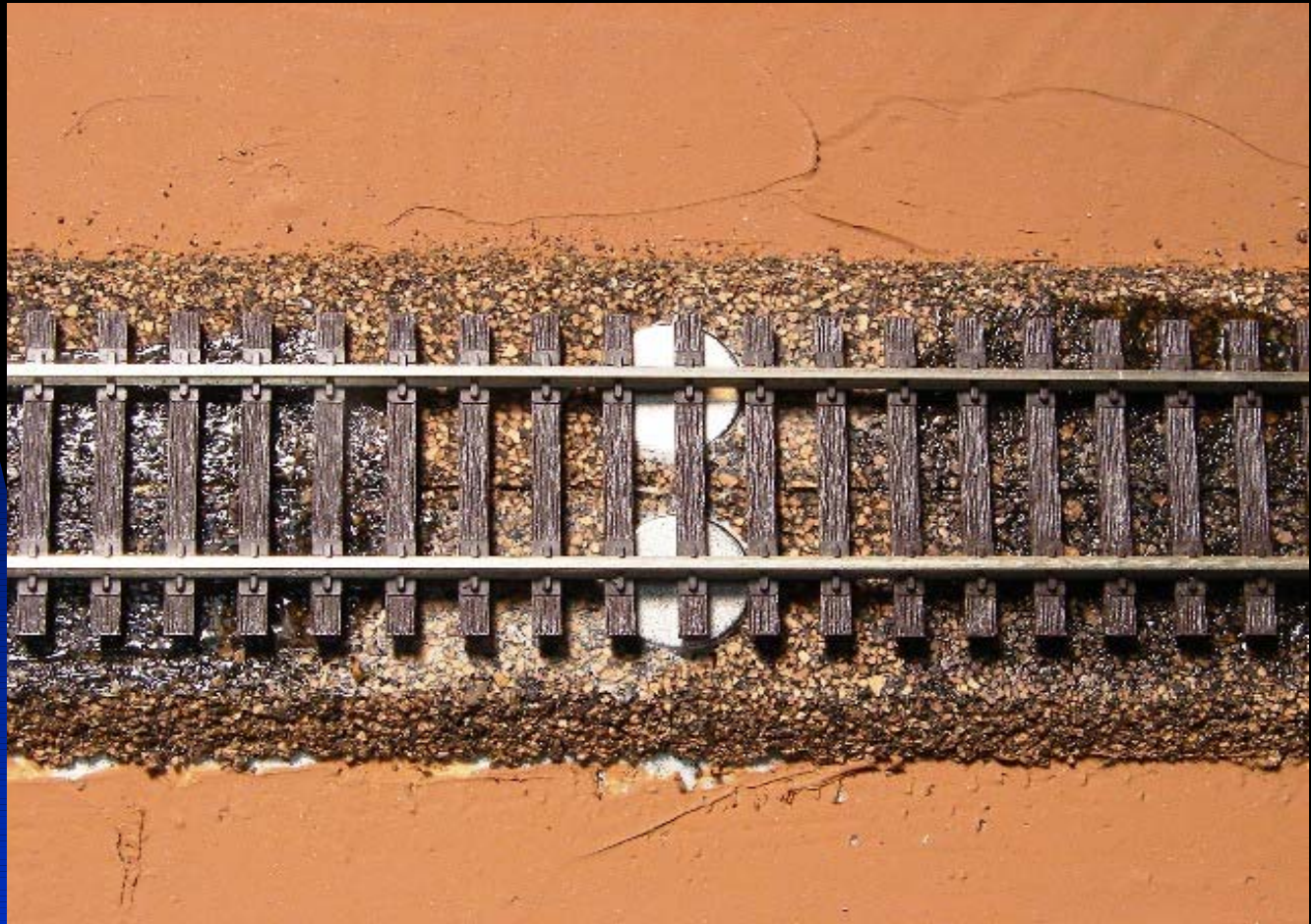
- Uncoupling options
- Dual-magnet Installation
- Improving Reliability
- Switching Techniques



Uncoupling Options

- Kadee ramps
- Rix Pik
- Skewer sticks & coffee stirrers
- MTH decoder uncoupler
- 0-5-0
- Dual-Magnets

Disc Magnets



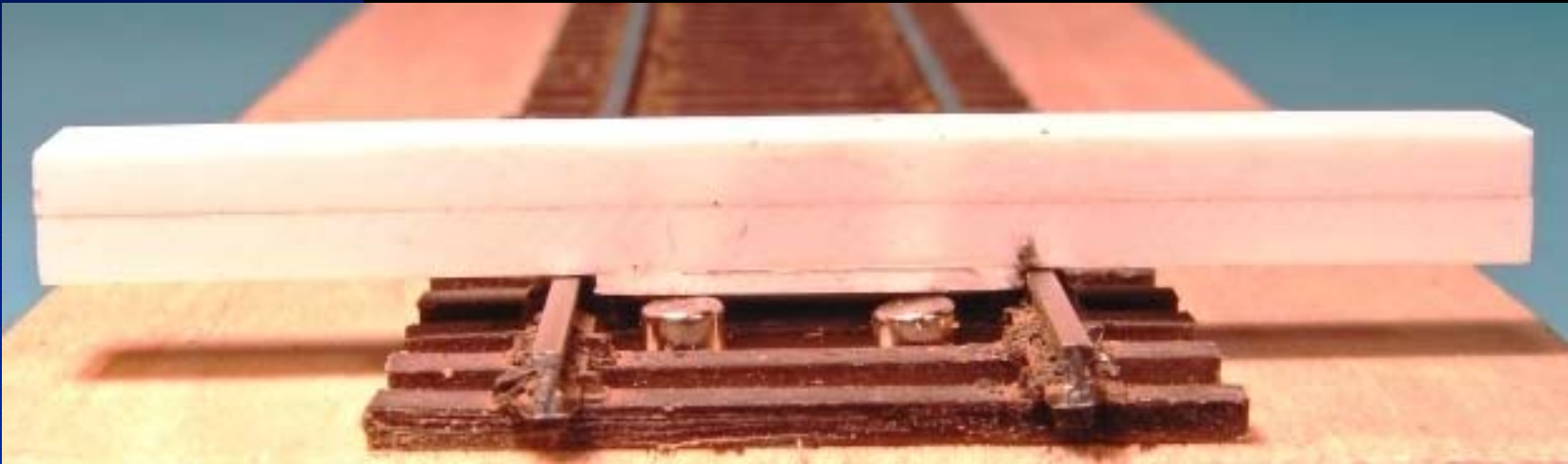
Cylindrical Dual-Magnets

- K&J Magnetics, Inc.
- Inexpensive
- Easy to install
- Work with most scales



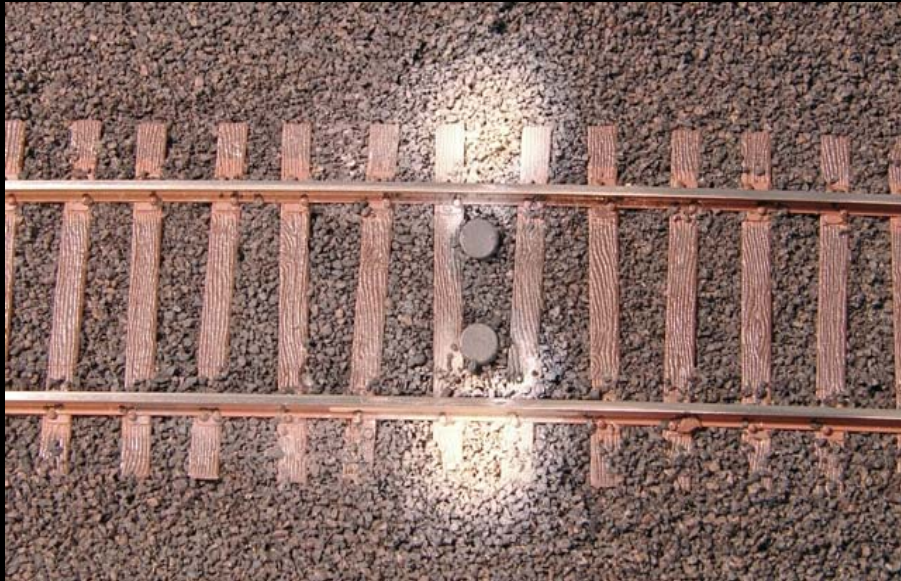
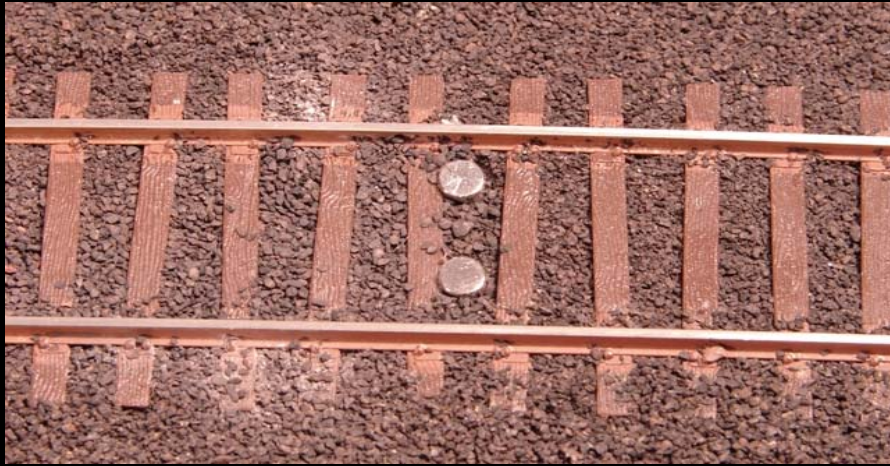
Installation

- Select location
- Drill 1/8" holes
- Adjust height



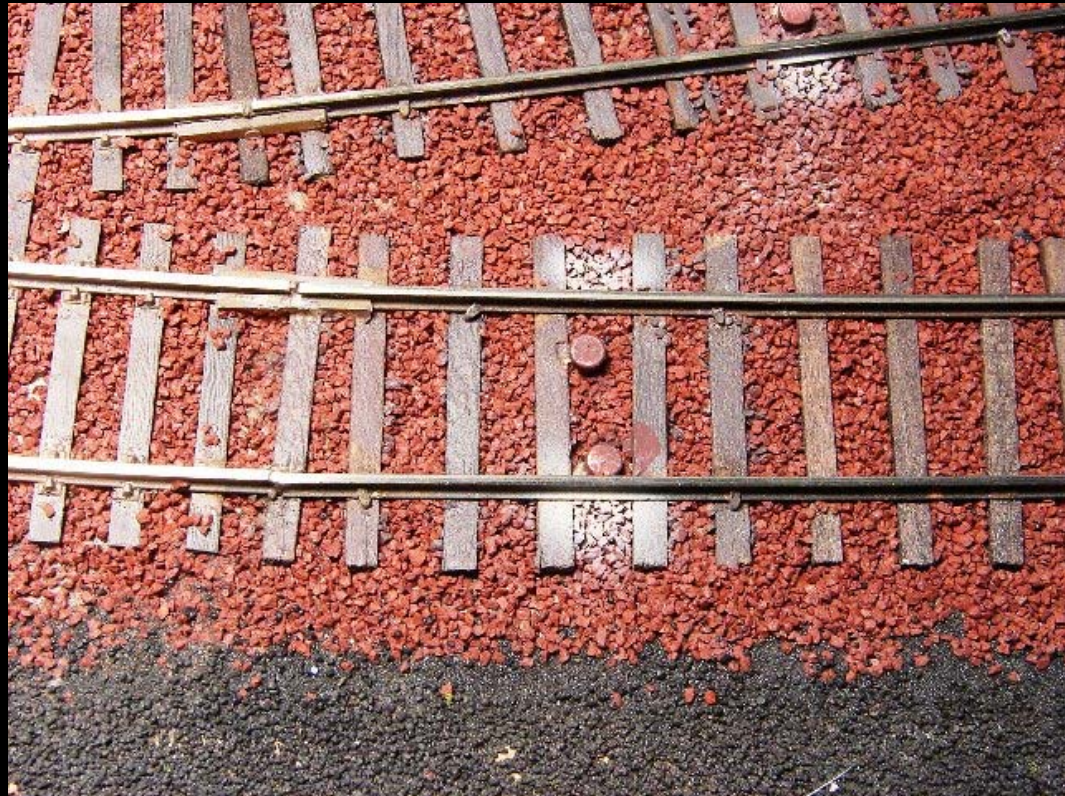
Finished Installation

- Paint the magnet
- Mark the location



Curved Track Installation

- May require some experimentation
- Move inside rail magnet in to center trip pins



Marking Locations - Sidings



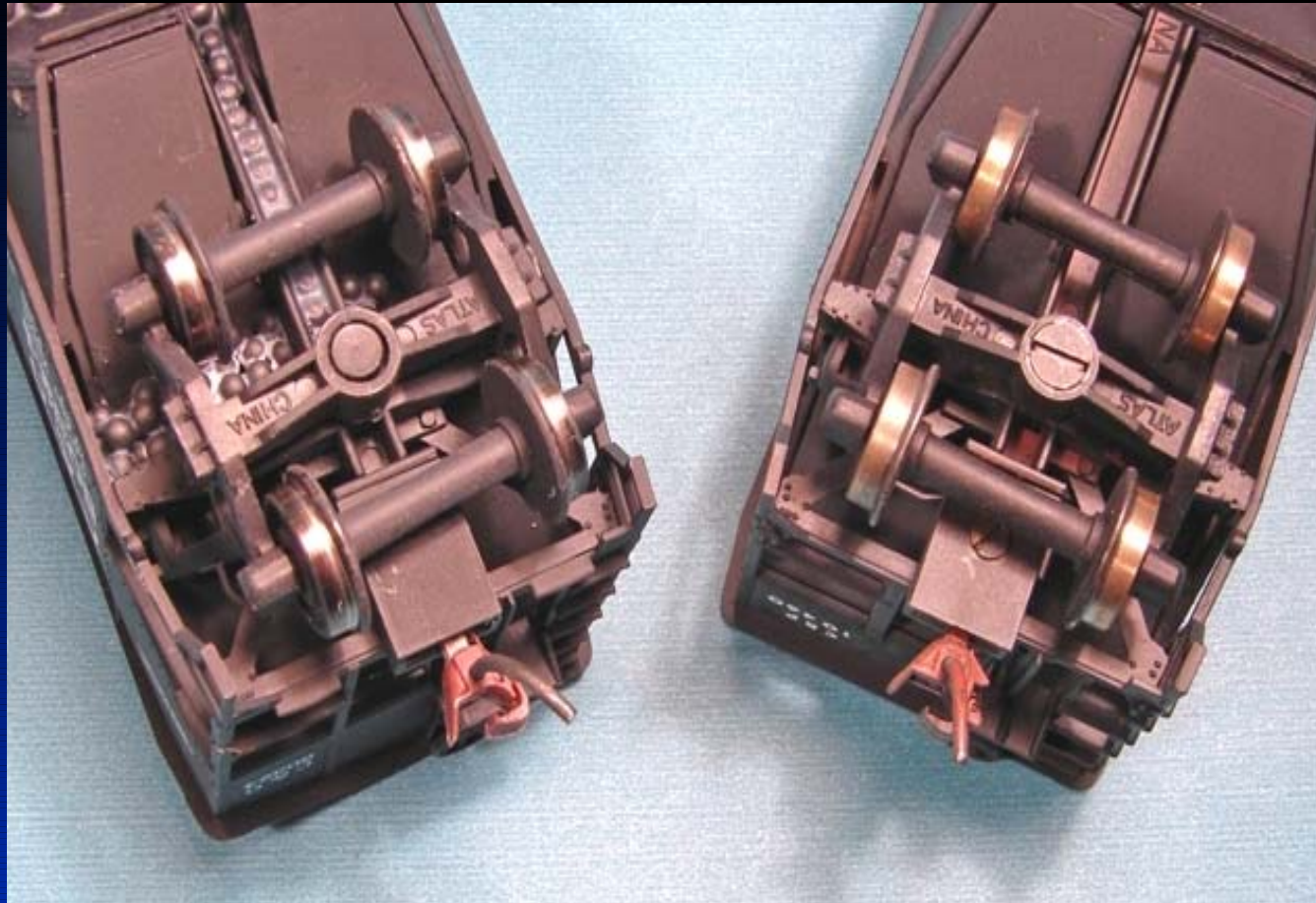
Marking Locations - Yards



Improving Reliability

- 4 Point Inspection
 - Truck Attachment
 - Coupler height
 - Trip pin height
 - Coupler movement

Truck Attachment



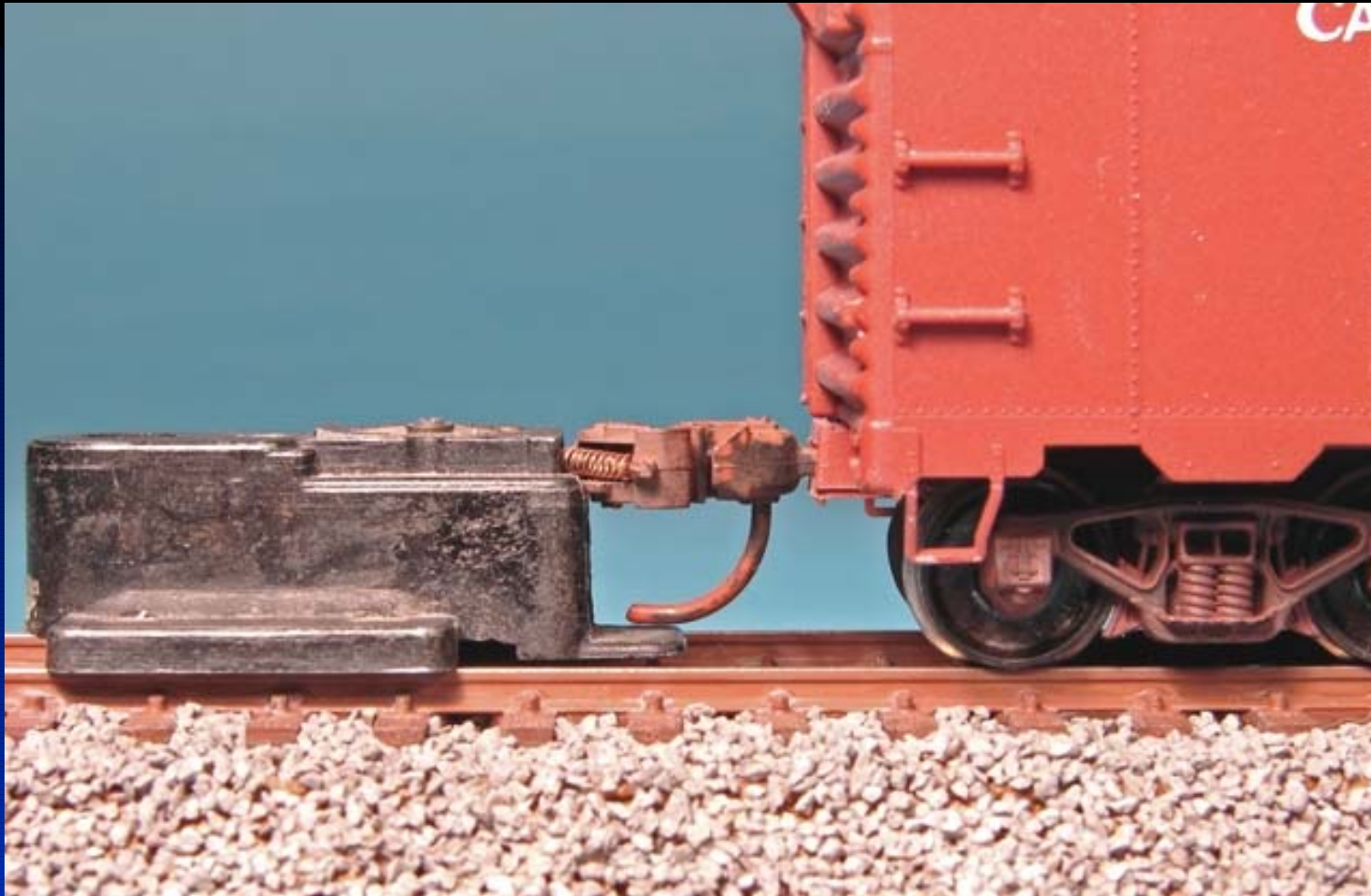
Coupler Height



05/18/10

14

Trip Pin Height



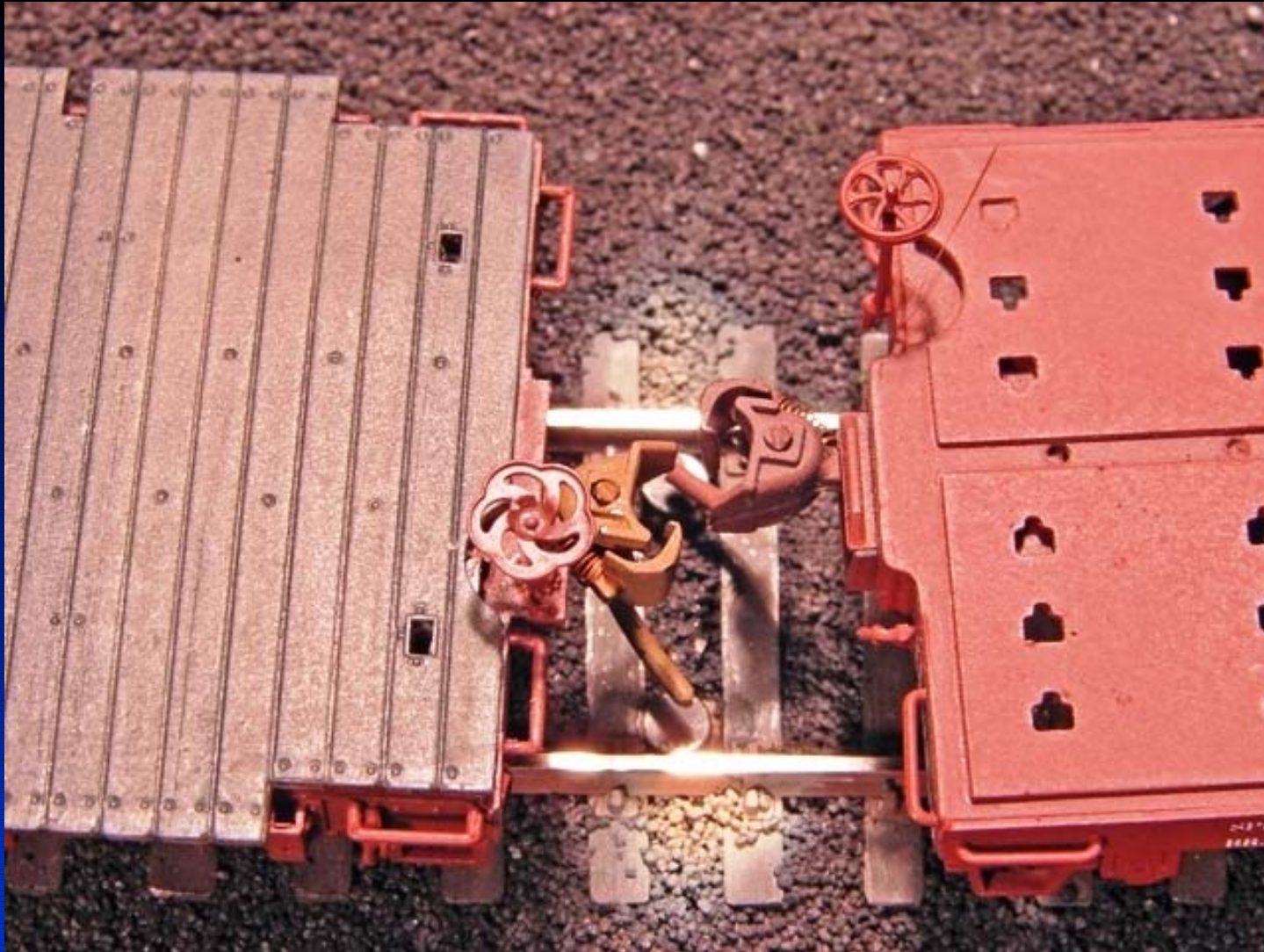
Coupler Movement



05/18/10

16

Uncoupling Process



05/18/10

17

Switching Techniques



05/18/10

18

Summary

- Cheap
- Easy to install
- Reliable & realistic uncoupling
- Improve operations
- Works with multiple scales
- Works with all couplers